

School Malaise Trap Program

Species Image Library

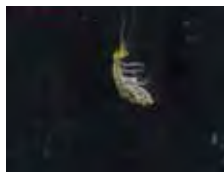
The images of the species collected in your Malaise trap are shown below. A single representative for each species was selected to be photographed; in some cases, only a damaged specimen was available.

Re-render images: per row

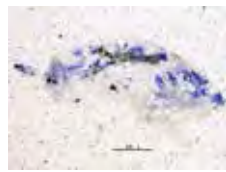
300 Records Per Page - Pages: 1



[Ventral]
Arachnida
BIN URI: BOLD:AAM4805



[Lateral]
Orchesella cincta
BIN URI: BOLD:AAA6611



[Lateral]
Entomobryidae
BIN URI: BOLD:ACD9444



[Lateral]
Entomobryidae
BIN URI: BOLD:ACI2941



[Lateral]
Entomobryidae
BIN URI: BOLD:AAF7756



[Lateral]
Entomobryomorpha
BIN URI: BOLD:ACI5558



[Lateral]
Entomobryidae
BIN URI: BOLD:ACP9313



[Dorsal]
Aphidecta obliterated
BIN URI: BOLD:AAK2029



[Dorsal]
Psyllobora borealis
BIN URI: BOLD:ACA7954



[Dorsal]
Psyllobora vigintimaculata
BIN URI: BOLD:ACN4256



[Dorsal]
Cartodere bifasciatus
BIN URI: BOLD:AAW4095



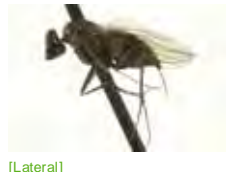
[Lateral]
Diptera
BIN URI: BOLD:ACH4373



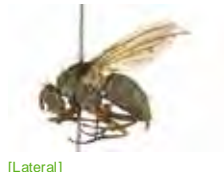
[Lateral]
Corynoneura arctica
BIN URI: BOLD:AAB0079



[Lateral]
Chironomidae
BIN URI: BOLD:ABU5525



[Lateral]
Medetera sp. SEB5
BIN URI: BOLD:ACA1124



[Lateral]
Muscidae
BIN URI: BOLD:AAG1711



[Lateral]
Phoridae
BIN URI: BOLD:AAM9361



[Lateral]
Sciaridae
BIN URI: BOLD:AAH3939



[Lateral]
Sciaridae
BIN URI: BOLD:AAH6453



[Lateral]
Sciaridae
BIN URI: BOLD:ACC1757



[Lateral]
Sargus bipunctatus
BIN URI: BOLD:ACI9008



[Lateral]
Syrphus vitripennis
BIN URI: BOLD:AAB5577



[Lateral]
Callipterinella
BIN URI: BOLD:ACB2802



[Dorsal]
Cinara cedri
BIN URI: BOLD:AAI3973



[Dorsal]
Euceraphis betulae



[Lateral]
Illinoia spiraeicola



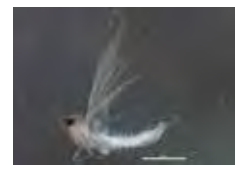
[Dorsal]
Myzocallis



[Dorsal]
Hemiptera



[Lateral]
Typhlocybinae



[Lateral]
Empoasca

BIN URI: BOLD:AAI4926

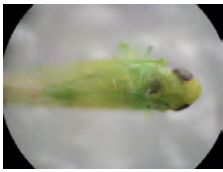
BIN URI: BOLD:ACE5456

BIN URI: BOLD:AAI3333

BIN URI: BOLD:AAO8340

BIN URI: BOLD:ACC4174

BIN URI: BOLD:ACP1172



[Dorsal]
Hemiptera
BIN URI: BOLD:AA8406



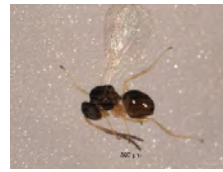
[Lateral]
Hemiptera
BIN URI: BOLD:AA8417



[Lateral]
Aphelinidae
BIN URI: BOLD:ACK0155



[Lateral]
Aphidinae
BIN URI: BOLD:ACI8960



[Lateral]
Figitidae
BIN URI: BOLD:AAU8458



[Lateral]
Formica accreta
BIN URI: BOLD:AAA4975



[Lateral]
Megaspilidae
BIN URI: BOLD:ACP7644



[Dorsal]
Trissolcus
BIN URI: BOLD:ACP9474



[Lateral]
Scelioninae
BIN URI: BOLD:ACP7391



[Dorsal]
Lotisma trigonana
BIN URI: BOLD:AAF3918



[Dorsal]
Nealcis californiaria
BIN URI: BOLD:ABZ2954



[Dorsal]
Caloptilia alnivorella
BIN URI: BOLD:AAB7939



[Lateral]
Coniopterygidae
BIN URI: BOLD:ACK5033



[Lateral]
Valenzuela burmeisteri
BIN URI: BOLD:AAO4092



[Lateral]
Valenzuela
BIN URI: BOLD:AAP2603



[Dorsal]
Psocoptera
BIN URI: BOLD:AA6687



[Dorsal]
Psocoptera
BIN URI: BOLD:AA8448



[Dorsal]
Psocoptera
BIN URI: BOLD:ACB9376



[Lateral]
Psocoptera
BIN URI: BOLD:ACC1744