

School Malaise Trap Program

Species Image Library

The images of the species collected in your Malaise trap are shown below. A single representative for each species was selected to be photographed; in some cases, only a damaged specimen was available.

Re-render images: per row

300 Records Per Page - Pages: 1



[Dorsal]
Agelenopsis potteri
BIN URI: BOLD: AAB5726



[Dorsal]
Hibana gracilis
BIN URI: BOLD: AAN6394



[Dorsal]
Araniella displicata
BIN URI: BOLD: AAA8399



[Dorsal]
Tetragnatha versicolor
BIN URI: BOLD: AAB7995



[Dorsal]
Bassaniana utahensis
BIN URI: BOLD: AAF0365



[Dorsal]
Trachelas depressus
BIN URI: BOLD: ACN8290



[Dorsal]
Oribatulidae
BIN URI: BOLD: ACF9074



[Lateral]
Entomobrya
BIN URI: BOLD: ACL6239



[Dorsal]
Coleomegilla maculata lengi
BIN URI: BOLD: AAD7604



[Dorsal]
Orthoperus scutellaris
BIN URI: BOLD: AAU7040



[Dorsal]
Coleoptera
BIN URI: BOLD: ABA9097



[Dorsal]
Atomaria CHU2
BIN URI: BOLD: AAG5060



[Dorsal]
Sitona hispidulus
BIN URI: BOLD: AAH0130



[Lateral]
Cerodontha muscina
BIN URI: BOLD: AAF1051



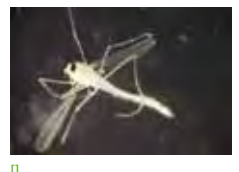
[Lateral]
Agromyzidae
BIN URI: BOLD: ABV1016



[Lateral]
Cecidomyiidae
BIN URI: BOLD: AAA1259



[Lateral]
Paraphaenocladus impensus
BIN URI: BOLD: AAC4197



[Lateral]
Paratanytarsus
BIN URI: BOLD: AAV6213



[Lateral]
Procladius
BIN URI: BOLD: AAG5513



[Lateral]
Chironomidae
BIN URI: BOLD: AAM7064



[Lateral]
Tanytarsus guerlus
BIN URI: BOLD: AAC4525



[Lateral]
Chironomidae
BIN URI: BOLD: AAN5342



[Lateral]
Chironomidae
BIN URI: BOLD: ACF0915



[Lateral]
Chironomidae
BIN URI: BOLD: ACE0699



[Lateral]
Chironominae
BIN URI: BOLD: ACK7314



[Lateral]
Coenosia tigrina
BIN URI: BOLD: AAB5609



[Lateral]
Phoridae
BIN URI: BOLD: AAG3236



[Lateral]
Boettcheria cimbicis
BIN URI: BOLD: AAG6756



[Lateral]
Lycoriella castanescens
BIN URI: BOLD: ABA1215



[Lateral]
Sciaridae
BIN URI: BOLD: AAN6447



[Lateral]
Sciaridae
BIN URI: BOLD:AAV6412



[Lateral]
Sciaridae
BIN URI: BOLD:AAU6595



[Lateral]
Tipula paludosa
BIN URI: BOLD:AAE7386



[Lateral]
Tipula paterifera
BIN URI: BOLD:AAE7387



[Lateral]
Acanalonia conica
BIN URI: BOLD:AAJ5015



[Dorsal]
Aphididae
BIN URI: BOLD:AAD6287



[Lateral]
Empoasca
BIN URI: BOLD:AAV0165



[Lateral]
Fieberiella florii
BIN URI: BOLD:ACJ7053



[Lateral]
Stragania apicalis
BIN URI: BOLD:ABA3401



[Dorsal]
Hemiptera
BIN URI: BOLD:ABA5794



[Lateral]
Metcalfa pruinosa
BIN URI: BOLD:AAG4399



[Lateral]
Nabis americanoferus
BIN URI: BOLD:AAB8143



[Dorsal]
Eremocoris borealis
BIN URI: BOLD:AAG8968



[Lateral]
Microplitis kewleyi
BIN URI: BOLD:AAB8493



[Lateral]
Hymenoptera
BIN URI: BOLD:AAU8585



[Lateral]
Formica
BIN URI: BOLD:AAE0406



[Lateral]
Lasius
BIN URI: BOLD:AAB9126



[Lateral]
Lasius
BIN URI: BOLD:ABY9254



[Lateral]
Hymenoptera
BIN URI: BOLD:AAG5792



[Lateral]
Cryptus albitarsis
BIN URI: BOLD:AAH1693



[Lateral]
Cymodusa distincta
BIN URI: BOLD:ABZ4363



[Lateral]
Hymenoptera
BIN URI: BOLD:AAD4214



[Lateral]
Lissonota coracina
BIN URI: BOLD:AAG7794



[Lateral]
Mesochorus americanus
BIN URI: BOLD:AAV6795



[Dorsal]
Hymenoptera
BIN URI: BOLD:ABZ8208



[Lateral]
Synopeas
BIN URI: BOLD:AAU8571



[Lateral]
Telenomus
BIN URI: BOLD:ACP9092



[Lateral]
Scelioninae
BIN URI: BOLD:ACJ7408



[Lateral]
Telenomus
BIN URI: BOLD:AAN8030



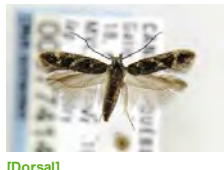
[Lateral]
Trissolcus
BIN URI: BOLD:AAN6799



[Lateral]
Pteromalidae
BIN URI: BOLD:ACL2686



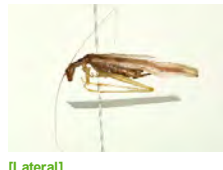
[Dorsal]
Elachista illectella
BIN URI: BOLD:AAD9052



[Dorsal]
Caryocolum pullatella
BIN URI: BOLD:AAH4284



[Lateral]
Campaea perlata
BIN URI: BOLD:AAA2078



[Lateral]
Neoxabea bipunctata
BIN URI: BOLD:AAN8489



[Lateral]
Psocoptera
BIN URI: BOLD:AAN8447



[Lateral]
Psocoptera
BIN URI: BOLD:AAH3228



[Lateral]
Psocoptera
BIN URI: BOLD:AAF1729



[Lateral]
Psocoptera
BIN URI: BOLD:ACE6318

