

# School Malaise Trap Program

## Species Image Library

The images of the species collected in your Malaise trap are shown below. A single representative for each species was selected to be photographed; in some cases, only a damaged specimen was available.

Re-render images:  per row

300 Records Per Page - Pages: 1



[Dorsal]  
*Anyphaena pectorosa*  
BIN URI: BOLD:AAD6926



[Dorsal]  
*Cheiracanthium mildei*  
BIN URI: BOLD:AAB7601



[Dorsal]  
*Tibellus maritimus*  
BIN URI: BOLD:AAA7188



[Dorsal]  
*Xysticus elegans*  
BIN URI: BOLD:AAC1568



[Dorsal]  
*Trachelas depressus*  
BIN URI: BOLD:ACN8290



[Dorsal]  
*Mesostigmata*  
BIN URI: BOLD:ACF7854



[Dorsal]  
*Anystidae*  
BIN URI: BOLD:AAM7961



[Lateral]  
*Collembola*  
BIN URI: BOLD:AAB8452



[Dorsal]  
*Katiannidae*  
BIN URI: BOLD:AAB5296



[Dorsal]  
*Collembola*  
BIN URI: BOLD:ACJ0012



[Lateral]  
*Cleridae*  
BIN URI: BOLD:AAH0237



[Lateral]  
*Enoclerus nigripes rufiventris*  
BIN URI: BOLD:AAU6970



[Dorsal]  
*Chilocorus stigma*  
BIN URI: BOLD:AAH3301



[Dorsal]  
*Coccinellidae*  
BIN URI: BOLD:AAB5640



[Dorsal]  
*Atomaria ephippiata*  
BIN URI: BOLD:AAP7030



[Dorsal]  
*Larinus planus*  
BIN URI: BOLD:AAO1182



[Dorsal]  
*Aeolus*  
BIN URI: BOLD:ACP9027



[Dorsal]  
*Corticaria*  
BIN URI: BOLD:ABA9093



[Lateral]  
*Corticaria*  
BIN URI: BOLD:AAN6154



[Dorsal]  
*Corticarina*  
BIN URI: BOLD:AAH0256



[Lateral]  
*Mordellistena*  
BIN URI: BOLD:AAU7171



[Lateral]  
*Mordellistena*  
BIN URI: BOLD:AAH0125



[Lateral]  
*Stilbus apicalis*  
BIN URI: BOLD:AAH0134



[Dorsal]  
*Philonthus carbonarius*  
BIN URI: BOLD:AAR1764



[Dorsal]  
*Philonthus cognatus*  
BIN URI: BOLD:AAL5087



[Lateral]  
Staphylinidae  
BIN URI: BOLD:ABA9958



[Dorsal]  
*Paratenetus punctatus*  
BIN URI: BOLD:AAZ0340



[Dorsal]  
*Forficula auricularia-A*  
BIN URI: BOLD:AAG9897



[Lateral]  
*Aulagromyza luteoscutellata*  
BIN URI: BOLD:AAJ9681



[Lateral]  
Anthomyiidae  
BIN URI: BOLD:AAG2460



[Lateral]  
Anthomyiidae  
BIN URI: BOLD:AAN5497



[Dorsal]  
Cecidomyiidae  
BIN URI: BOLD:AAP9022



[Lateral]  
Chironomidae  
BIN URI: BOLD:ACL4244



[Lateral]  
Chironomidae  
BIN URI: BOLD:AAN5369



[Lateral]  
Chironomidae  
BIN URI: BOLD:ACP8516



[Lateral]  
Chironomidae  
BIN URI: BOLD:AAL7356



[Lateral]  
Chironomidae  
BIN URI: BOLD:ABA6447



[Lateral]  
*Drosophila*  
BIN URI: BOLD:AAG8493



[Lateral]  
*Dryomyza anilis*  
BIN URI: BOLD:AAC6974



[Lateral]  
*Coenosia tigrina*  
BIN URI: BOLD:AAB5609



[Lateral]  
Muscidae  
BIN URI: BOLD:AAG1711



[Lateral]  
*Phaonia*  
BIN URI: BOLD:ABU9891



[Lateral]  
Muscidae  
BIN URI: BOLD:ACE9475



[Lateral]  
Muscidae  
BIN URI: BOLD:AAG1715



[Lateral]  
*Mycetophila fungorum*  
BIN URI: BOLD:ACF2821



[Lateral]  
Mycetophilidae  
BIN URI: BOLD:AAM8980



[Lateral]  
Phoridae  
BIN URI: BOLD:AAG3236



[Lateral]  
Phoridae  
BIN URI: BOLD:AAG3248



[Lateral]  
Phoridae  
BIN URI: BOLD:ABU5529



[Lateral]  
Phoridae  
BIN URI: BOLD:AAU5598



[Lateral]  
Psilidae  
BIN URI: BOLD:AAF9710



[Lateral]  
Psychodidae  
BIN URI: BOLD:AAL7815



[Lateral]  
*Boettcheria cimbicis*  
BIN URI: BOLD:AAG6756



[Lateral]  
Diptera  
BIN URI: BOLD:AAG6743



[Lateral]  
Sarcophagidae  
BIN URI: BOLD:ABV1243



[Lateral]  
Sciaridae  
BIN URI: BOLD:AAN6444



[Lateral]  
Sciaridae  
BIN URI: BOLD:ABA6407



[Lateral]  
Sciaridae  
BIN URI: BOLD:AAN6447



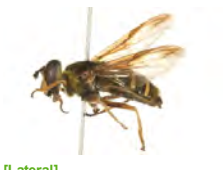
[Lateral]  
Sciaridae  
BIN URI: BOLD:AAQ2138



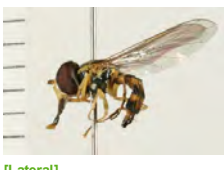
[Lateral]  
Sphaeroceridae  
BIN URI: BOLD:AAG7289



[Lateral]  
Syrphidae  
BIN URI: BOLD:AAB2384



[Lateral]  
*Sericomyia chrysotoxoides*  
BIN URI: BOLD:ABX5395



[Lateral]  
*Toxomerus geminatus*  
BIN URI: BOLD:AAC1312



[Lateral]  
*Siphona flavipes*  
BIN URI: BOLD:AAM7892



[Lateral]  
*Nephrotoma*  
BIN URI: BOLD:ABX6298



[Lateral]  
*Tipula paludosa*  
BIN URI: BOLD:AAE7386





[Lateral]  
*Acanalonia bivittata*  
BIN URI: BOLD: AAN8422



[Lateral]  
Aleyrodidae  
BIN URI: BOLD: ACC4413



[Dorsal]  
Hemiptera  
BIN URI: BOLD: AAN8408



[Lateral]  
*Aphis glycines*  
BIN URI: BOLD: AAB7938



[Lateral]  
*Capitophorus*  
BIN URI: BOLD: ACI9922



[Dorsal]  
*Macrosiphum euphorbiae*  
BIN URI: BOLD: AAA6213



[Lateral]  
*Rhopalomyzus lonicerae*  
BIN URI: BOLD: AAC4637



[Dorsal]  
*Rhopalosiphum padi*  
BIN URI: BOLD: AA9899



[Dorsal]  
*Rhopalosiphum rufiabdominalis*  
BIN URI: BOLD: AAI0406



[Lateral]  
*Ceratagallia sanguinolenta*  
BIN URI: BOLD: AAG2874



[Lateral]  
*Empoasca decipiens*  
BIN URI: BOLD: AAY6741



[Dorsal]  
*Empoasca*  
BIN URI: BOLD: AAY6743



[Dorsal]  
*Empoasca*  
BIN URI: BOLD: AAG2868



[Lateral]  
*Empoasca*  
BIN URI: BOLD: ABZ4247



[Lateral]  
*Empoasca*  
BIN URI: BOLD: AAN8250



[Lateral]  
*Forcipata loca*  
BIN URI: BOLD: ACC8165



[Lateral]  
*Macrosteles quadrilineatus*  
BIN URI: BOLD: AAA9422



[Lateral]  
*Prescottia lobata*  
BIN URI: BOLD: AAY6739



[Dorsal]  
Hemiptera  
BIN URI: BOLD: ABW2932



[Lateral]  
*Typhlocyba pomaria*  
BIN URI: BOLD: AAF5980



[Lateral]  
*Pubilia concava*  
BIN URI: BOLD: AAD6344



[Dorsal]  
*Lygus lineolaris*  
BIN URI: BOLD: AAA5803



[Lateral]  
*Aphelinus varipes*  
BIN URI: BOLD: ABW3282



[Lateral]  
Braconidae  
BIN URI: BOLD: AAU8453



[Lateral]  
*Aphidius*  
BIN URI: BOLD: ACF4786



[Lateral]  
*Blacus steffoxi*  
BIN URI: BOLD: AAZ9744



[Lateral]  
*Dinotrema*  
BIN URI: BOLD: AAU8452



[Lateral]  
Hymenoptera  
BIN URI: BOLD: AAG1342



[Lateral]  
Hymenoptera  
BIN URI: BOLD: AAU8585



[Lateral]  
Braconidae  
BIN URI: BOLD: AAQ2672



[Lateral]  
Hymenoptera  
BIN URI: BOLD: AAP6708



[Lateral]  
Diapriidae  
BIN URI: BOLD: AAP6717



[Dorsal]  
Diapriidae  
BIN URI: BOLD: AAU8448



[Lateral]  
Hymenoptera  
BIN URI: BOLD: AAM7487



[Lateral]  
Eulophidae  
BIN URI: BOLD: AAU8734



[Lateral]  
Hymenoptera  
BIN URI: BOLD: AAG0778



[Lateral]  
*Formica*  
BIN URI: BOLD: AAE0406



[Lateral]  
*Lasius nearcticus*  
BIN URI: BOLD: AAD1528



[Lateral]  
*Lasius*  
BIN URI: BOLD: ABZ0423



[Lateral]  
*Ponera pennsylvanica*  
BIN URI: BOLD: AAF0441



[Lateral]  
*Prenolepis imparis*  
BIN URI: BOLD: AAC1302



[Lateral]  
Hymenoptera  
BIN URI: BOLD: ACF3458



[Lateral]  
*Cymodusa distincta*  
BIN URI: BOLD:ABZ4363



[Lateral]  
*Lissonota coracina*  
BIN URI: BOLD:AAG7794



[Lateral]  
Hymenoptera  
BIN URI: BOLD:AAG7644



[Lateral]  
Hymenoptera  
BIN URI: BOLD:AAD5194



[Lateral]  
*Pimpla pedalis*  
BIN URI: BOLD:AAD5192



[Lateral]  
Hymenoptera  
BIN URI: BOLD:AAM7494



[Lateral]  
Ichneumonidae  
BIN URI: BOLD:AAH1901



[Lateral]  
Orthocentrinae  
BIN URI: BOLD:AAG8257



[Lateral]  
Ichneumonidae  
BIN URI: BOLD:ABA6173



[Lateral]  
Megaspilidae  
BIN URI: BOLD:ACH3693



[Lateral]  
Myrmariidae  
BIN URI: BOLD:ABV2812



[Lateral]  
Platygastriidae  
BIN URI: BOLD:AAG7883



[Lateral]  
*Synopeas*  
BIN URI: BOLD:AAU8571



[Lateral]  
*Synopeas*  
BIN URI: BOLD:ACI9856



[Lateral]  
*Telenomus*  
BIN URI: BOLD:AAV9194



[Lateral]  
*Telenomus*  
BIN URI: BOLD:ACC8019



[Lateral]  
*Telenomus*  
BIN URI: BOLD:ACP8474



[Lateral]  
*Telenomus*  
BIN URI: BOLD:ACJ0216



[Lateral]  
Platygastriidae  
BIN URI: BOLD:ACP9170



[Lateral]  
Platygastriidae  
BIN URI: BOLD:ACL3237



[Dorsal]  
Hymenoptera  
BIN URI: BOLD:ACC7658



[Lateral]  
Hymenoptera  
BIN URI: BOLD:AAG8271



[Lateral]  
Platygastriidae  
BIN URI: BOLD:AAU8342



[Lateral]  
Hymenoptera  
BIN URI: BOLD:ACK8120



[Lateral]  
Platygastriidae  
BIN URI: BOLD:ACI8508



[Lateral]  
*Cecidostiba*  
BIN URI: BOLD:ABW3206



[Dorsal]  
*Agrotis venerabilis*  
BIN URI: BOLD:ABZ1938



[Dorsal]  
*Noctua comes*  
BIN URI: BOLD:AAA2633



[Lateral]  
*Sunira bicolorago*  
BIN URI: BOLD:AAA4426



[Dorsal]  
*Plutella xylostella*  
BIN URI: BOLD:AAA1513



[Dorsal]  
*Acleris macdunnoughi*  
BIN URI: BOLD:AAA7793



[Lateral]  
*Valenzuela burmeisteri*  
BIN URI: BOLD:AAO4092



[Lateral]  
Psocoptera  
BIN URI: BOLD:AAV8447



[Lateral]  
Psocoptera  
BIN URI: BOLD:ABA6163



[Lateral]  
Psocoptera  
BIN URI: BOLD:AAF1729



[Lateral]  
Psocoptera  
BIN URI: BOLD:ACE6318



[Dorsal]  
Psocoptera  
BIN URI: BOLD:AAF4633



[Dorsal]  
*Haplothrips*  
BIN URI: BOLD:AAI6861



[Lateral]  
*Limnephilus submonilifer*  
BIN URI: BOLD:AAA3080

