

# School Malaise Trap Program

## Species Image Library

The images of the species collected in your Malaise trap are shown below. A single representative for each species was selected to be photographed; in some cases, only a damaged specimen was available.

Re-render images:  per row

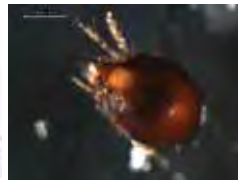
300 Records Per Page - Pages: 1



[Lateral]  
*Philodromus cespitum*  
BIN URI: BOLD: AAB3836



[Dorsal]  
Phytoseiidae  
BIN URI: BOLD: ACH4020



[Dorsal]  
Trichoribatid  
BIN URI: BOLD: AAH2450



[Dorsal]  
Anystidae  
BIN URI: BOLD: ABW5642



[Dorsal]  
Anystidae  
BIN URI: BOLD: ABW5662



[Dorsal]  
Anystidae  
BIN URI: BOLD: ACO3990



[Lateral]  
Entomobrya  
BIN URI: BOLD: ACL6239



[Dorsal]  
Galerucinae  
BIN URI: BOLD: ACK1281



[Lateral]  
*Enoclerus nigripes rufiventris*  
BIN URI: BOLD: AAU6970



[Dorsal]  
Coccinellidae  
BIN URI: BOLD: AAB5640



[Dorsal]  
*Atomaria ephippiata*  
BIN URI: BOLD: ACI4909



[Dorsal]  
Corticarina  
BIN URI: BOLD: AAH0256



[Lateral]  
*Tachinus corticinus*  
BIN URI: BOLD: AAH0107



[Lateral]  
*Tachyporus chrysolinus*  
BIN URI: BOLD: AAN9511



[Dorsal]  
*Trixagus carnicollis*  
BIN URI: BOLD: AAN6148



[Dorsal]  
*Forficula auricularia-A*  
BIN URI: BOLD: AAG9897



[Lateral]  
*Cerodontha muscina*  
BIN URI: BOLD: AAF1051



[Lateral]  
Anisopodidae  
BIN URI: BOLD: AAL7534



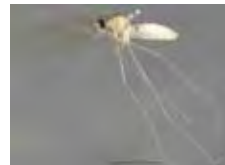
[Lateral]  
Anthomyiidae  
BIN URI: BOLD: AAF4234



[Lateral]  
Diptera  
BIN URI: BOLD: AAG6745



[Lateral]  
*Pollenia rudis*  
BIN URI: BOLD: AAH3035



[Lateral]  
Cecidomyiidae  
BIN URI: BOLD: AAV5666



[Lateral]  
Cecidomyiidae  
BIN URI: BOLD: AAN5250



[Lateral]  
Cecidomyiidae  
BIN URI: BOLD: ABA6448



[Lateral]  
Cecidomyiidae  
BIN URI: BOLD: AAH3767



[Lateral]  
Ceratopogonidae  
BIN URI: BOLD: AAV5088



[Lateral]  
Chironomus  
BIN URI: BOLD: ABV1236



[Lateral]  
*Dicrotendipes tritonus*  
BIN URI: BOLD: AAC0706



[Lateral]  
Chironomidae  
BIN URI: BOLD: AAL7330



[Lateral]  
Chironomidae  
BIN URI: BOLD: AAM6236



[Lateral]  
*Paraphaenocladus impensus*  
BIN URI: BOLD:AAC4197



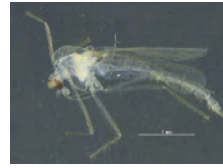
[Dorsal]  
Chironomidae  
BIN URI: BOLD:ACP4736



[Lateral]  
Chironomidae  
BIN URI: BOLD:ACJ3722



[Lateral]  
Chironomidae  
BIN URI: BOLD:ABV1225



[Lateral]  
*Tanytarsus guerlus*  
BIN URI: BOLD:AAC4525



[Lateral]  
Chironomidae  
BIN URI: BOLD:ACE0699



[Lateral]  
Chironomidae  
BIN URI: BOLD:ACP8081



[Lateral]  
Chironomidae  
BIN URI: BOLD:ACA2954



[Lateral]  
Chironomidae  
BIN URI: BOLD:AAU4880



[Lateral]  
Chironomidae  
BIN URI: BOLD:ABV1221



[Lateral]  
Chironomidae  
BIN URI: BOLD:ACI5525



[Lateral]  
Chironomidae  
BIN URI: BOLD:ABA6503



[Lateral]  
Chironomidae  
BIN URI: BOLD:AAM6241



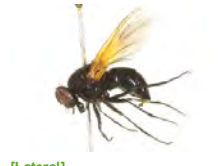
[Lateral]  
Chironomidae  
BIN URI: BOLD:ACC7822



[Lateral]  
Drosophilidae  
BIN URI: BOLD:AAE2703



[Lateral]  
Muscidae  
BIN URI: BOLD:AAG1711



[Lateral]  
*Mesembrina latreillii*  
BIN URI: BOLD:AAG1700



[Lateral]  
Phaonia  
BIN URI: BOLD:AAG1699



[Lateral]  
Muscidae  
BIN URI: BOLD:AAG1715



[Lateral]  
Phoridae  
BIN URI: BOLD:AAG3236



[Lateral]  
Phoridae  
BIN URI: BOLD:AAG3248



[Lateral]  
Phoridae  
BIN URI: BOLD:AAG3275



[Lateral]  
Phoridae  
BIN URI: BOLD:AAZ6701



[Dorsal]  
Phoridae  
BIN URI: BOLD:ABU5533



[Lateral]  
Psychodidae  
BIN URI: BOLD:ABU5546



[Lateral]  
Psychodidae  
BIN URI: BOLD:ABV1314



[Lateral]  
Diptera  
BIN URI: BOLD:AAG6743



[Lateral]  
*Scathophaga furcata*  
BIN URI: BOLD:AAH0022



[Lateral]  
Sciaridae  
BIN URI: BOLD:AAH3939



[Lateral]  
Scatopsiara  
BIN URI: BOLD:ACF4135



[Lateral]  
Sciaridae  
BIN URI: BOLD:ABA6407



[Lateral]  
Sciaridae  
BIN URI: BOLD:ABU5520



[Lateral]  
Sciaridae  
BIN URI: BOLD:ABX3194



[Lateral]  
Sciaridae  
BIN URI: BOLD:AAH3947



[Lateral]  
Sciaridae  
BIN URI: BOLD:ACE3123



[Lateral]  
Sciaridae  
BIN URI: BOLD:AAV1261



[Lateral]  
Sciaridae  
BIN URI: BOLD:AAP6465



[Lateral]  
Sciaridae  
BIN URI: BOLD:ABV1265



[Lateral]  
Sciaridae  
BIN URI: BOLD:ACP8038



[Lateral]  
Sciomyzidae  
BIN URI: BOLD:AAG7440



[Lateral]  
Aleyrodes  
BIN URI: BOLD:ABW2915



[Lateral]  
*Aphis glycines*  
BIN URI: BOLD:AAB7938





[Lateral]  
*Capitophorus*  
BIN URI: BOLD:ACP9661



[Dorsal]  
*Drepanaphis*  
BIN URI: BOLD:AAI6141



[Lateral]  
*Rhopalomyzus ioniceriae*  
BIN URI: BOLD:AAC4637



[Lateral]  
*Rhopalosiphum nymphaeae*  
BIN URI: BOLD:AAE3554



[Dorsal]  
*Rhopalosiphum padi*  
BIN URI: BOLD:AAA9899



[Dorsal]  
*Erythroneura bakeri*  
BIN URI: BOLD:AAV0161



[Lateral]  
*Erythroneura vitifex*  
BIN URI: BOLD:AAV6742



[Dorsal]  
*Erythroneura vulnerata*  
BIN URI: BOLD:ACP8308



[Dorsal]  
*Erythroneura vulnerata*  
BIN URI: BOLD:AAO8361



[Dorsal]  
*Erythroneura*  
BIN URI: BOLD:ABA5864



[Lateral]  
*Jikradia olitoria*  
BIN URI: BOLD:ABA5861



[Lateral]  
*Scaphoideus*  
BIN URI: BOLD:ABA8094



[Lateral]  
*Scaphoideus forceps*  
BIN URI: BOLD:AAV9210



[Dorsal]  
*Typhlocyba*  
BIN URI: BOLD:ACJ7184



[Lateral]  
*Zelus luridus*  
BIN URI: BOLD:AAG2724



[Lateral]  
*Aphelinus varipes*  
BIN URI: BOLD:ABW3282



[Lateral]  
*Aphidius rhopalosiphi*  
BIN URI: BOLD:ABZ3101



[Lateral]  
*Blacus stelfoxi*  
BIN URI: BOLD:AAZ9744



[Lateral]  
*Dinotrema*  
BIN URI: BOLD:ACE6877



[Lateral]  
Hymenoptera  
BIN URI: BOLD:AAF5747



[Lateral]  
*Dinotrema*  
BIN URI: BOLD:AAU8452



[Lateral]  
*Ephedrus*  
BIN URI: BOLD:AAV6811



[Lateral]  
*Praon*  
BIN URI: BOLD:ACE2830



[Lateral]  
Alysiaeae  
BIN URI: BOLD:AAV1289



[Lateral]  
Hymenoptera  
BIN URI: BOLD:AAU8585



[Lateral]  
Hymenoptera  
BIN URI: BOLD:AAU8584



[Lateral]  
Chrysididae  
BIN URI: BOLD:AAG7793



[Lateral]  
*Mimesa*  
BIN URI: BOLD:AAG7791



[Lateral]  
Hymenoptera  
BIN URI: BOLD:AAP6708



[Lateral]  
Diapriidae  
BIN URI: BOLD:ABA5937



[Lateral]  
Diapriidae  
BIN URI: BOLD:ACN2856



[Lateral]  
Hymenoptera  
BIN URI: BOLD:AAM7487



[Lateral]  
Hymenoptera  
BIN URI: BOLD:ACM1547



[Lateral]  
Diapriidae  
BIN URI: BOLD:AAU9056



[Lateral]  
Hymenoptera  
BIN URI: BOLD:AAU8574



[Lateral]  
Eulophidae  
BIN URI: BOLD:AAV9189



[Lateral]  
Hymenoptera  
BIN URI: BOLD:ABA9889



[Lateral]  
Ponerinae  
BIN URI: BOLD:AAM7079



[Lateral]  
*Lasius*  
BIN URI: BOLD:ABZ0423



[Lateral]  
*Myrmica*  
BIN URI: BOLD:AAD0829



[Lateral]  
*Myrmica*  
BIN URI: BOLD:ABZ3538



[Lateral]  
*Cymodusa distincta*  
BIN URI: BOLD:ABZ4363



[Lateral]  
Diadegma nr. Fenestrale  
BIN URI: BOLD:AAG7740



[Lateral]  
Lissonota coracina  
BIN URI: BOLD:AAG7794



[Lateral]  
Megastylus  
BIN URI: BOLD:ACE4234



[Lateral]  
Pimplinae  
BIN URI: BOLD:AAG0387



[Lateral]  
Hymenoptera  
BIN URI: BOLD:AAP6689



[Lateral]  
Hymenoptera  
BIN URI: BOLD:AAU8582



[Lateral]  
Orthocentrinae  
BIN URI: BOLD:ACP8963



[Dorsal]  
Hymenoptera  
BIN URI: BOLD:ACJ7345



[Lateral]  
Megaspilidae  
BIN URI: BOLD:ACK1665



[Lateral]  
Anagrus  
BIN URI: BOLD:AAZ1968



[Lateral]  
Anagrus  
BIN URI: BOLD:ACE0249



[Lateral]  
Mymaridae  
BIN URI: BOLD:ACI9987



[Lateral]  
Mymaridae  
BIN URI: BOLD:ACK1874



[Lateral]  
Amblyaspis  
BIN URI: BOLD:AAU8575



[Lateral]  
Synopeas  
BIN URI: BOLD:AAU8571



[  
Synopeas  
BIN URI: BOLD:AAU8671



[Lateral]  
Trissolcus  
BIN URI: BOLD:AAN7679



[Lateral]  
Scelioninae  
BIN URI: BOLD:AAZ0155



[Dorsal]  
Trissolcus  
BIN URI: BOLD:ACJ6984



[Lateral]  
Platygastridae  
BIN URI: BOLD:AAU8342



[Dorsal]  
Hymenoptera  
BIN URI: BOLD:ACJ7117



[Lateral]  
Platygastridae  
BIN URI: BOLD:ACC9672



[Lateral]  
Platygastridae  
BIN URI: BOLD:ACP9031



[Lateral]  
Telenomus  
BIN URI: BOLD:ABA6265



[Lateral]  
Pteromalidae  
BIN URI: BOLD:AAG8348



[Lateral]  
Trichogramma sp.  
BIN URI: BOLD:ACE5676



[Lateral]  
Vespaula maculifrons  
BIN URI: BOLD:AAD5593



[Lateral]  
Campaea perlata  
BIN URI: BOLD:AAA2078



[Dorsal]  
Thera juniperata  
BIN URI: BOLD:AAA3914



[Lateral]  
Psocoptera  
BIN URI: BOLD:ABA6163



[Lateral]  
Psocoptera  
BIN URI: BOLD:AAH3228



[Lateral]  
Psocoptera  
BIN URI: BOLD:AAF1729



[Lateral]  
Psocoptera  
BIN URI: BOLD:AAN8450



[Lateral]  
Psocoptera  
BIN URI: BOLD:ABA6550



[Dorsal]  
Haplothrips  
BIN URI: BOLD:AAG2812