

School Malaise Trap Program

Species Image Library

The images of the species collected in your Malaise trap are shown below. A single representative for each species was selected to be photographed; in some cases, only a damaged specimen was available.

Re-render images: per row

300 Records Per Page - Pages: 1



[Dorsal]
Erigone alettris
BIN URI: BOLD: AAD1746



[Dorsal]
Cheiroseius
BIN URI: BOLD: AAV0589



[Dorsal]
Cheiroseius
BIN URI: BOLD: AAN6642



[Lateral]
Entomobrya
BIN URI: BOLD: ACL6239



[Dorsal]
Coccinella septempunctata
BIN URI: BOLD: AAA8933



[Dorsal]
Cyphon laevipennis
BIN URI: BOLD: AAG3633



[Lateral]
Anthomyiidae
BIN URI: BOLD: AAG2465



[Lateral]
Anthomyiidae
BIN URI: BOLD: ACC9953



[Lateral]
Bibionidae
BIN URI: BOLD: ABV0350



[Lateral]
Diptera
BIN URI: BOLD: AAG6745



[Dorsal]
Cecidomyiidae
BIN URI: BOLD: AAP9022



[Lateral]
Diptera
BIN URI: BOLD: ACE1652



[Lateral]
Cecidomyiidae
BIN URI: BOLD: ACP9347



[Lateral]
Ceratopogonidae
BIN URI: BOLD: AAP9052



[Lateral]
Microspectra nigripila
BIN URI: BOLD: ABZ5071



[Lateral]
Microspectra polita
BIN URI: BOLD: AAC4403



[Dorsal]
Orthocladius oblidens
BIN URI: BOLD: AAD8971



[Lateral]
Chironomidae
BIN URI: BOLD: ACG3299



[Lateral]
Chironomidae
BIN URI: BOLD: AAN4803



[Lateral]
Parametricnemus
BIN URI: BOLD: ACI8426



[Dorsal]
Chironomidae
BIN URI: BOLD: AAN8989



[Lateral]
Chironomidae
BIN URI: BOLD: ACB0946



[Dorsal]
Chironomidae
BIN URI: BOLD: ACP4736



[Lateral]
Chironomidae
BIN URI: BOLD: AAM7064



[Lateral]
Chironomidae
BIN URI: BOLD: ABA6408



[Lateral]
Chironomidae
BIN URI: BOLD: AAN5342



[Lateral]
Chironomidae
BIN URI: BOLD: ACA8540



[Lateral]
Chloropidae
BIN URI: BOLD: AAH4148



[Lateral]
Elachiptera sibirica
BIN URI: BOLD: AAH4208



[Dorsal]
Culiseta
BIN URI: BOLD: AAC9132



[Lateral]
Dixidae
BIN URI: BOLD:ACI6982



[Lateral]
Ephyridae
BIN URI: BOLD:AAG2751



[Lateral]
Heleomyzidae
BIN URI: BOLD:AAG0459



[Lateral]
Heleomyzidae
BIN URI: BOLD:AAE1978



[Lateral]
Molophilus sp.
BIN URI: BOLD:AAP8637



[Lateral]
Symplecta
BIN URI: BOLD:AAF9014



[Lateral]
Mycetophilidae
BIN URI: BOLD:ABU5545



[Lateral]
Exechia
BIN URI: BOLD:ACD9501



[Lateral]
Phoridae
BIN URI: BOLD:AAG3236



[Lateral]
Phoridae
BIN URI: BOLD:ABU5529



[Lateral]
Phoridae
BIN URI: BOLD:ABU5528



[Lateral]
Phoridae
BIN URI: BOLD:AAG3266



[Lateral]
Phoridae
BIN URI: BOLD:ACB6729



[Lateral]
Phoridae
BIN URI: BOLD:AAG3255



[Lateral]
Phoridae
BIN URI: BOLD:AAL9075



[Lateral]
Psychoda sp.
BIN URI: BOLD:AAL7819



[Lateral]
Psychodidae
BIN URI: BOLD:AAP4581



[Lateral]
Psychodidae
BIN URI: BOLD:AAF9317



[Lateral]
Bradyzia difformis
BIN URI: BOLD:AAV1295



[Lateral]
Sciaridae
BIN URI: BOLD:AAZ2139



[Lateral]
Sciaridae
BIN URI: BOLD:AAH3941



[Lateral]
Scatopsiara
BIN URI: BOLD:AAH3920



[Lateral]
Sciaridae
BIN URI: BOLD:AAY6391



[Lateral]
Sciaridae
BIN URI: BOLD:ACC5491



[Lateral]
Sciaridae
BIN URI: BOLD:ACJ7008



[Lateral]
Sciaridae
BIN URI: BOLD:AAM9253



[Lateral]
Sphaeroceridae
BIN URI: BOLD:AAG7277



[Lateral]
Sphaeroceridae
BIN URI: BOLD:ABV1407



[Lateral]
Graphogaster
BIN URI: BOLD:ACP7602



[Lateral]
Tachinidae
BIN URI: BOLD:AAG2175



[Dorsal]
Acyrtosiphon pisum
BIN URI: BOLD:AAB1787



[Lateral]
Aphididae
BIN URI: BOLD:AAC1165



[Lateral]
Callipterinella
BIN URI: BOLD:ACB2802



[Lateral]
Capitophorus elaeagni
BIN URI: BOLD:AAE3015



[Lateral]
Ceruraphis
BIN URI: BOLD:AAI4199



[Dorsal]
Chaitophorus populialbae
BIN URI: BOLD:AAI4166



[Lateral]
Eriosoma americanum
BIN URI: BOLD:AAD7955



[Lateral]
Aphididae
BIN URI: BOLD:ACF1560



[Lateral]
Aphididae
BIN URI: BOLD:AAB8566



[Lateral]
Illinoia spiraeicola
BIN URI: BOLD:ACE5456



[Dorsal]
Macrosiphum euphorbiae
BIN URI: BOLD:AAA6213



[Lateral]
Macrosiphum
BIN URI: BOLD:AAI1641



[Dorsal]
Metopolophium dirhodum
BIN URI: BOLD:AAE7796



[Dorsal]
Myzus cerasi
BIN URI: BOLD:AAB2802



[Lateral]
Aphididae
BIN URI: BOLD:AAB9332



[Lateral]
Nearctaphis bakeri
BIN URI: BOLD:AAD0902



[Lateral]
Nearctaphis sensoriata
BIN URI: BOLD:AAG3602



[Dorsal]
Nearctaphis
BIN URI: BOLD:ACE5867



[Dorsal]
Pemphigus bursarius
BIN URI: BOLD:AAD1826



[Dorsal]
Rhopalosiphum cerasifoliae
BIN URI: BOLD:AAB5408



[Dorsal]
Rhopalosiphum padi
BIN URI: BOLD:AAA9899



[Dorsal]
Rhopalosiphum oxyacanthae
BIN URI: BOLD:AAD1504



[Dorsal]
Wahlgreniella vaccinii
BIN URI: BOLD:AAB6874



[Lateral]
Balclutha
BIN URI: BOLD:AAG9373



[Dorsal]
Empoasca
BIN URI: BOLD:ABA5763



[Lateral]
Empoasca
BIN URI: BOLD:AAG8850



[Lateral]
Hardya dentata
BIN URI: BOLD:ACP8443



[Lateral]
Psammotettix lividellus
BIN URI: BOLD:AAG8681



[Lateral]
Typhlocyba pomaria
BIN URI: BOLD:AAF5980



[Lateral]
Nysius groenlandicus
BIN URI: BOLD:ACE3366



[Dorsal]
Lygus lineolaris
BIN URI: BOLD:AAA5803



[Dorsal]
Lygus plagiatus
BIN URI: BOLD:ACF4388



[Lateral]
Aphytis
BIN URI: BOLD:ABW3280



[Lateral]
Hymenoptera
BIN URI: BOLD:AAU9131



[Lateral]
Aphidius ervi
BIN URI: BOLD:ACI2531



[Lateral]
Aphidius
BIN URI: BOLD:ACF4786



[Lateral]
Praon brevistigma
BIN URI: BOLD:AAH7424



[Lateral]
Hymenoptera
BIN URI: BOLD:AAP6708



[Dorsal]
Belyta validicornis
BIN URI: BOLD:AAU8736



[Lateral]
Fomicidae
BIN URI: BOLD:AAA4977



[Lateral]
Myrmica
BIN URI: BOLD:AAI3346



[Lateral]
Pimpla hesperus
BIN URI: BOLD:AAP6739



[Lateral]
Lissonota coracina
BIN URI: BOLD:AAG7794



[Lateral]
Stenomacrus
BIN URI: BOLD:ACE4848



[Lateral]
Ichneumonidae
BIN URI: BOLD:ACG2110



[Lateral]
Mymaridae
BIN URI: BOLD:ABV9379



[Dorsal]
Mymaridae
BIN URI: BOLD:ACP9287



[Lateral]
Mymaridae
BIN URI: BOLD:ACB6947



[Lateral]
Mymaridae
BIN URI: BOLD:ACN6494



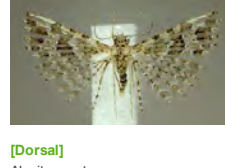
[Lateral]
Telenomus
BIN URI: BOLD:ACP8654



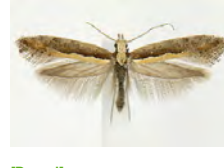
[Lateral]
Platygastriidae
BIN URI: BOLD:AAU8342



[Lateral]
Platygastriinae
BIN URI: BOLD:ACD3193



[Dorsal]
Alucita montana
BIN URI: BOLD:AAB1666



[Dorsal]
Plutella xylostella
BIN URI: BOLD:AAA1513



[Dorsal]
Aeolothrips
BIN URI: BOLD:AAU0577



[Lateral]
Anaphothrips obscurus
BIN URI: BOLD:AAQ0558