

School Malaise Trap Program

Species Image Library

The images of the species collected in your Malaise trap are shown below. A single representative for each species was selected to be photographed; in some cases, only a damaged specimen was available.

Re-render images: per row

300 Records Per Page - Pages: 1



[Dorsal]
Ceraticelus similis
BIN URI: BOLD:AAF1318



[Dorsal]
Erigone arctica
BIN URI: BOLD:AAB6851



[Dorsal]
Philodromus rufus vibrans
BIN URI: BOLD:AAB2768



[Dorsal]
Macrochelidae
BIN URI: BOLD:ABW2692



[Dorsal]
Microdispidae
BIN URI: BOLD:ACL7429



[Dorsal]
Coccinellidae
BIN URI: BOLD:AAB5640



[Lateral]
Amischa analis
BIN URI: BOLD:ABA5313



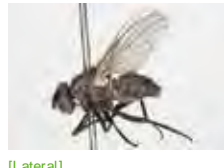
[Lateral]
Tachyporus chrysomelinus
BIN URI: BOLD:AA9511



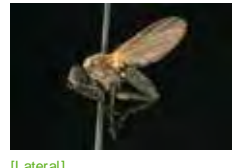
[Lateral]
Agromyziidae
BIN URI: BOLD:AAD1945



[Lateral]
Anthomyiidae
BIN URI: BOLD:AAG2460



[Lateral]
Anthomyiidae
BIN URI: BOLD:AAG2463



[Lateral]
Diptera
BIN URI: BOLD:AAG2462



[Lateral]
Anthomyiidae
BIN URI: BOLD:AAG2461



[Lateral]
Diptera
BIN URI: BOLD:AAG6745



[Lateral]
Pollenia vagabunda
BIN URI: BOLD:AAH3040



[Lateral]
Pollenia angustigena
BIN URI: BOLD:AAP2825



[Dorsal]
Cecidomyiidae
BIN URI: BOLD:AAP9022



[Lateral]
Cecidomyiidae
BIN URI: BOLD:AAM6129



[Lateral]
Cecidomyiidae
BIN URI: BOLD:AA95268



[Lateral]
Micromyinae
BIN URI: BOLD:ACL2290



[Lateral]
Cecidomyiidae
BIN URI: BOLD:ACL9120



[Lateral]
Ceratopogonidae
BIN URI: BOLD:AA95148



[Lateral]
Chironomidae
BIN URI: BOLD:ABA9112



[Dorsal]
Chironomus riparius
BIN URI: BOLD:AAA7263



[Lateral]
Cricotopus
BIN URI: BOLD:ACC7282



[Lateral]
Cricotopus sylvestris
BIN URI: BOLD:AAA5299



[Lateral]
Metricnemos intergervius
BIN URI: BOLD:AAG5480



[Lateral]
Metricnemos
BIN URI: BOLD:ACM6798



[Lateral]
Chironomidae
BIN URI: BOLD:AAI2688



[Lateral]
Paraphaenocladus impensus
BIN URI: BOLD:AAC4197



[Lateral]
Procladius sp. 1ES
BIN URI: BOLD:AAG3920



[Lateral]
Chironomidae
BIN URI: BOLD:AAF4817



[Lateral]
Chironomidae
BIN URI: BOLD:AAM7064



[Dorsal]
Chironomidae
BIN URI: BOLD:ACP4736



[Lateral]
Chironomidae
BIN URI: BOLD:AAZ5510



[Lateral]
Chironomidae
BIN URI: BOLD:ACI3270



[]
Chironomidae
BIN URI: BOLD:AAG5542



[Lateral]
Chironomidae
BIN URI: BOLD:AAH5354



[Lateral]
Chironomidae
BIN URI: BOLD:ACP8185



[Lateral]
Chironomidae
BIN URI: BOLD:ACF8146



[Lateral]
Chironomidae
BIN URI: BOLD:AAM6246



[Dorsal]
Chironomidae
BIN URI: BOLD:AAH5348



[Lateral]
Orthocladiinae
BIN URI: BOLD:ACK5715



[Lateral]
Orthocladiinae
BIN URI: BOLD:ACN8090



[Lateral]
Thaumatomyia trifasciata
BIN URI: BOLD:ACO0211



[Lateral]
Campsinemus
BIN URI: BOLD:ACN5829



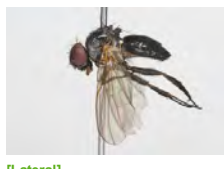
[Lateral]
Medetera jacula
BIN URI: BOLD:ACE1342



[Lateral]
Dolichopodidae
BIN URI: BOLD:AAG6929



[Lateral]
Drosophila
BIN URI: BOLD:AAG8493



[Lateral]
Fanniidae
BIN URI: BOLD:AAG4620



[Lateral]
Heleomyzidae
BIN URI: BOLD:AAE1978



[Lateral]
Platypalpus
BIN URI: BOLD:AAH5505



[Lateral]
Empididae
BIN URI: BOLD:AAF9771



[Lateral]
Platypalpus
BIN URI: BOLD:ACP8449



[Lateral]
Empididae
BIN URI: BOLD:ACJ0078



[Lateral]
Empididae
BIN URI: BOLD:AAM6655



[Lateral]
Dicranomyia (Dicranomyia)
longipennis
BIN URI: BOLD:AAP8635



[Lateral]
Tipulidae
BIN URI: BOLD:AAU6544



[Lateral]
Rhipidia lecontei
BIN URI: BOLD:ABY8689



[Lateral]
Erioptera septemtrionis
BIN URI: BOLD:AAF9055



[Dorsal]
Tipulidae
BIN URI: BOLD:AAF9028



[Lateral]
Lonchoptera
BIN URI: BOLD:AAG9974



[Lateral]
Helina sp.
BIN URI: BOLD:AAC2498



[Lateral]
Muscidae
BIN URI: BOLD:ABW3766



[Lateral]
Muscina pascuorum
BIN URI: BOLD:AAG1714



[Lateral]
Muscina levida
BIN URI: BOLD:AAB8817



[Lateral]
Phoridae
BIN URI: BOLD:AAG3236



[Lateral]
Phoridae
BIN URI: BOLD:ABU5529



[Lateral]
Phoridae
BIN URI: BOLD:AAG3280



[Lateral]
Phoridae
BIN URI: BOLD:ACB6729



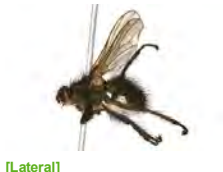
[Lateral]
Psychodidae
BIN URI: BOLD:AAF9316



[Lateral]
Ravinia stimulans
BIN URI: BOLD:AAH7158



[Lateral]
Scathophagidae
BIN URI: BOLD:AAD0853



[Lateral]
Scathophagidae
BIN URI: BOLD:AAH4215



[Lateral]
Sciaridae
BIN URI: BOLD:AAH3939



[Lateral]
Sciaridae
BIN URI: BOLD:ABA0929



[Lateral]
Lycoriella castanescens
BIN URI: BOLD:ABA1215



[Lateral]
Sciaridae
BIN URI: BOLD:AAH3968



[Lateral]
Sciaridae
BIN URI: BOLD:AAQ2557



[Lateral]
Sciaridae
BIN URI: BOLD:ACE4654



[Lateral]
Sciaridae
BIN URI: BOLD:AAH6447



[Lateral]
Sciaridae
BIN URI: BOLD:ACP7603



[Lateral]
Sciaridae
BIN URI: BOLD:AAL7869



[Lateral]
Sciaridae
BIN URI: BOLD:ACL4032



[Lateral]
Sciaridae
BIN URI: BOLD:AAH6446



[Lateral]
Sciaridae
BIN URI: BOLD:AAH6770



[Lateral]
Sciaridae
BIN URI: BOLD:AAU6595



[Lateral]
Pherbellia vitalis
BIN URI: BOLD:AAG6845



[Lateral]
Simulium tuberosum complex
BIN URI: BOLD:AAA9710



[Lateral]
Simulium
BIN URI: BOLD:AAB1114



[Lateral]
Simulium tuberosum complex
BIN URI: BOLD:AAA8326



[Lateral]
Sericomyia chrysoxoides
BIN URI: BOLD:ABX5395



[Lateral]
Comptosia concinnata
BIN URI: BOLD:AAG2150



[Lateral]
Tipula paludosa
BIN URI: BOLD:AAE7386



[Lateral]
Aleyrodidae
BIN URI: BOLD:ACC4413



[Dorsal]
Anocia corni
BIN URI: BOLD:AAH2871



[Dorsal]
Hemiptera
BIN URI: BOLD:AAI3667



[Dorsal]
Chaetosiphon fragaefolii
BIN URI: BOLD:AAD3961



[Dorsal]
Dysaphis plantaginea
BIN URI: BOLD:AAE0550



[Dorsal]
Eucalippteris tiliae
BIN URI: BOLD:AAD0131



[Dorsal]
Macrosiphum
BIN URI: BOLD:ACJ0305



[Lateral]
Nearctaphis crataegifoliae
BIN URI: BOLD:ACF1270



[Dorsal]
Pemphigus bursarius
BIN URI: BOLD:AAD1826



[Dorsal]
Rhopalosiphum padi
BIN URI: BOLD:AAA9899



[Lateral]
Typhlocyba
BIN URI: BOLD:ABA5828



[Dorsal]
Typhlocyba
BIN URI: BOLD:ACJ7184



[Dorsal]
Typhlocyba
BIN URI: BOLD:ACP8455



[Dorsal]
Lopidea robiniae
BIN URI: BOLD:AAF3744



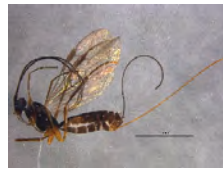
[Lateral]
Aleiodes
BIN URI: BOLD:AAH8871



[Lateral]
Aphidius schimitscheki
BIN URI: BOLD:ACM9303



[Lateral]
Aphidiinae
BIN URI: BOLD:AAA4188



[Lateral]
Charmon
BIN URI: BOLD:ACP8381



[Lateral]
Dinotrema
BIN URI: BOLD:ABX6808



[Lateral]
Glyptapanteles
BIN URI: BOLD:AAA4789



[Lateral]
Glyptapanteles sp.
BIN URI: BOLD:AAA4781



[Lateral]
Hymenoptera
BIN URI: BOLD:AAU8491



[Lateral]
Alysiniinae
BIN URI: BOLD:AAG1260



[Lateral]
Opiinae
BIN URI: BOLD:AAG1328



[Lateral]
Hymenoptera
BIN URI: BOLD:AAU8585



[Lateral]
Braconidae
BIN URI: BOLD:AAG1439



[Lateral]
Braconidae
BIN URI: BOLD:AAG1290



[Lateral]
Hymenoptera
BIN URI: BOLD:AAA7203



[Lateral]
Lasius
BIN URI: BOLD:AAB9126



[Lateral]
Lasius
BIN URI: BOLD:ACE8630



[Lateral]
Apechthis ontario
BIN URI: BOLD:AAA9338



[Lateral]
Cymodusa distincta
BIN URI: BOLD:ABZ4363



[Lateral]
Hymenoptera
BIN URI: BOLD:AAD4214



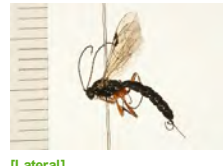
[Lateral]
Pimpla pedalis
BIN URI: BOLD:AAD5192



[Lateral]
Hymenoptera
BIN URI: BOLD:AAM7494



[Lateral]
Hymenoptera
BIN URI: BOLD:AAP6689



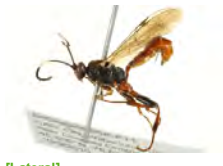
[Lateral]
Pimplinae
BIN URI: BOLD:AAG0381



[Lateral]
Cryptinae
BIN URI: BOLD:ACC1594



[Lateral]
Hymenoptera
BIN URI: BOLD:AAG7744



[Lateral]
Hymenoptera
BIN URI: BOLD:AAG7742



[Lateral]
Ichneumonidae
BIN URI: BOLD:ABV2671



[Lateral]
Myrmica
BIN URI: BOLD:AAZ0173



[Lateral]
Platygasteridae
BIN URI: BOLD:ABA6124



[Lateral]
Hymenoptera
BIN URI: BOLD:AAU8566



[Lateral]
Platygasteridae
BIN URI: BOLD:AAU8342



[Lateral]
Proctotrupidae
BIN URI: BOLD:ACK0195



[Dorsal]
Pteromalidae
BIN URI: BOLD:AAU9445



[
Conwentzia pineticola
BIN URI: BOLD:AAU1711



[Lateral]
Valenzuela
BIN URI: BOLD:AAP2603



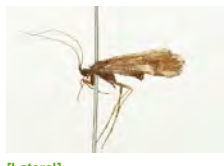
[Lateral]
Psocoptera
BIN URI: BOLD:ACA2933



[Lateral]
Psocoptera
BIN URI: BOLD:AAM8929



[Lateral]
Limnephilus submonilifer
BIN URI: BOLD:AAA3080



[Lateral]
Limnephilus sericeus
BIN URI: BOLD:AAA7041