

# School Malaise Trap Program

## Species Image Library

The images of the species collected in your Malaise trap are shown below. A single representative for each species was selected to be photographed; in some cases, only a damaged specimen was available.

Re-render images:  per row

300 Records Per Page - Pages: 1



[Dorsal]  
*Grammonota gentilis*  
BIN URI: BOLD:AAA9476



[Dorsal]  
Anystidae  
BIN URI: BOLD:AAM7961



[Lateral]  
*Abrolophus*  
BIN URI: BOLD:ACI9840



[Lateral]  
*Entomobrya multifasciata*  
BIN URI: BOLD:AAA7242



[Lateral]  
Collembola  
BIN URI: BOLD:ACC0359



[Dorsal]  
*Stethorus punctillum*  
BIN URI: BOLD:AAAN6149



[Lateral]  
*Corticaria*  
BIN URI: BOLD:AAAN6154



[Lateral]  
Staphylinidae  
BIN URI: BOLD:ABW2870



[Lateral]  
*Tachyporus chrysomelinus*  
BIN URI: BOLD:AAAN9511



[Lateral]  
Staphylinidae  
BIN URI: BOLD:ABA9958



[Dorsal]  
*Trixagus carinicollis*  
BIN URI: BOLD:AAAN6148



[Lateral]  
Cecidomyiidae  
BIN URI: BOLD:AAAN5275



[Lateral]  
Cecidomyiidae  
BIN URI: BOLD:AAAY6403



[Lateral]  
Cecidomyiidae  
BIN URI: BOLD:AAAN5205



[Dorsal]  
Cecidomyiidae  
BIN URI: BOLD:AAP9022



[Lateral]  
Cecidomyiidae  
BIN URI: BOLD:AAAN5268



[Lateral]  
Cecidomyiidae  
BIN URI: BOLD:ABA0863



[Lateral]  
Cecidomyiidae  
BIN URI: BOLD:ACA9179



[Lateral]  
Cecidomyiidae  
BIN URI: BOLD:ACO1622



[Lateral]  
Ceratopogonidae  
BIN URI: BOLD:AAAN5169



[Lateral]  
*Chironomus cf. decorus*  
BIN URI: BOLD:AAB7030



[Lateral]  
*Heterotrissocladius*  
BIN URI: BOLD:AAAX0836



[Lateral]  
Chironomidae  
BIN URI: BOLD:AAAN5369



[Lateral]  
Limnophyes  
BIN URI: BOLD:ABW5528



[Lateral]  
*Microspectra subletteorum*  
BIN URI: BOLD:AAF7088



[Dorsal]  
*Paracladopelma winnelli*  
BIN URI: BOLD:AAK4963



[Lateral]  
Chironomidae  
BIN URI: BOLD:AAM7064



[Lateral]  
Chironomidae  
BIN URI: BOLD:ACC4669



[Lateral]  
Chironomidae  
BIN URI: BOLD:AAAN5342



[Lateral]  
Chironomidae  
BIN URI: BOLD:AAU6603



[Lateral]  
Chironomidae  
BIN URI: BOLD:AAM6284



[Lateral]  
Chironomidae  
BIN URI: BOLD:AA5356



[Lateral]  
Thaumatomyia pulla  
BIN URI: BOLD:AAG9240



[Lateral]  
Dolichopodidae  
BIN URI: BOLD:AAG9713



[Lateral]  
Drosophila  
BIN URI: BOLD:AAG8493



[Lateral]  
Helina sp.  
BIN URI: BOLD:AAC2498



[Lateral]  
Phoridae  
BIN URI: BOLD:AAG3236



[Lateral]  
Phoridae  
BIN URI: BOLD:ABU5529



[Lateral]  
Phoridae  
BIN URI: BOLD:AAG3275



[Lateral]  
Phoridae  
BIN URI: BOLD:ABU5535



[Lateral]  
Phoridae  
BIN URI: BOLD:AAG3316



[Lateral]  
Phoridae  
BIN URI: BOLD:AAM9355



[Lateral]  
Psychodidae  
BIN URI: BOLD:ABU5546



[Lateral]  
Psychodidae  
BIN URI: BOLD:AAZ5592



[Lateral]  
Psychodidae sp. 1  
BIN URI: BOLD:AAE5173



[Lateral]  
Lycoriella castanescens  
BIN URI: BOLD:ABA1215



[Lateral]  
Sciaridae  
BIN URI: BOLD:AAM9255



[Lateral]  
Sciaridae  
BIN URI: BOLD:AA6433



[Lateral]  
Sciaridae  
BIN URI: BOLD:AA6447



[Lateral]  
Sciaridae  
BIN URI: BOLD:ABA6407



[Lateral]  
Sciaridae  
BIN URI: BOLD:ABU5520



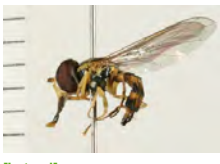
[Lateral]  
Sciaridae  
BIN URI: BOLD:ACE3123



[Lateral]  
Sciaridae  
BIN URI: BOLD:AAZ5626



[Lateral]  
Syrphidae  
BIN URI: BOLD:AA2384



[Lateral]  
Toxomerus geminatus  
BIN URI: BOLD:AAC1312



[Lateral]  
Tipula paludosa  
BIN URI: BOLD:AAE7386



[Lateral]  
Aphis glycines  
BIN URI: BOLD:AA27938



[Lateral]  
Capitophorus  
BIN URI: BOLD:ACI9922



[Lateral]  
Nearctaphis crataegifoliae  
BIN URI: BOLD:ACF1270



[Dorsal]  
Pemphigus bursarius  
BIN URI: BOLD:AAD1826



[Lateral]  
Dikraneura  
BIN URI: BOLD:AAZ2090



[Dorsal]  
Empoasca  
BIN URI: BOLD:AAG2868



[Lateral]  
Hemiptera  
BIN URI: BOLD:AAV0529



[Lateral]  
Forcipata loca  
BIN URI: BOLD:ACC8165



[Dorsal]  
Hemiptera  
BIN URI: BOLD:AAZ2074



[Dorsal]  
Lygus lineolaris  
BIN URI: BOLD:AAA5803



[Lateral]  
Apanteles ensiger  
BIN URI: BOLD:ACE6783



[Lateral]  
Hymenoptera  
BIN URI: BOLD:AAC7809



[Lateral]  
Aphis ervi  
BIN URI: BOLD:ACI2531



[Lateral]  
Aphis rhopalosiphii  
BIN URI: BOLD:ABZ3101



[Lateral]  
Cotesia crambi  
BIN URI: BOLD:AAH1026



[Lateral]  
Alysiainae  
BIN URI: BOLD:AAZ6824



[Lateral]  
Hymenoptera  
BIN URI: BOLD:AAU8209



[Lateral]  
Braconidae  
BIN URI: BOLD:ACP8663



[Lateral]  
Hymenoptera  
BIN URI: BOLD:AAP6708



[Dorsal]  
*Belyta validicornis*  
BIN URI: BOLD:AAU8736



[Lateral]  
Diapriidae  
BIN URI: BOLD:AAP6714



[Lateral]  
Diapriidae  
BIN URI: BOLD:ABA5937



[Lateral]  
Diapriidae  
BIN URI: BOLD:AAP6717



[Lateral]  
Hymenoptera  
BIN URI: BOLD:AAA7203



[Dorsal]  
Tetrastichinae  
BIN URI: BOLD:ACP9558



[Dorsal]  
*Brachymyrmex depilis*  
BIN URI: BOLD:AAU7490



[Dorsal]  
Formicidae  
BIN URI: BOLD:AAF0890



[Lateral]  
*Prenolepis imparis*  
BIN URI: BOLD:AAC1302



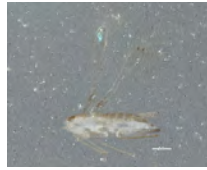
[Lateral]  
Hymenoptera  
BIN URI: BOLD:AAU8441



[Dorsal]  
Hymenoptera  
BIN URI: BOLD:ACJ7345



[Lateral]  
Megaspilidae  
BIN URI: BOLD:ACC3748



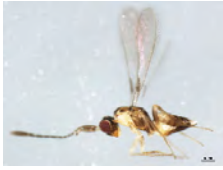
[Lateral]  
Anagrus  
BIN URI: BOLD:ACC9330



[Lateral]  
Anagrus  
BIN URI: BOLD:ACE0249



[Lateral]  
*Gonatocerus morrilli*  
BIN URI: BOLD:AAU9165



[Lateral]  
Gonatocerus  
BIN URI: BOLD:ABX2613



[Lateral]  
Occtonus  
BIN URI: BOLD:AAU9180



[Lateral]  
Myrmaridae  
BIN URI: BOLD:ACB6947



[Lateral]  
Myrmaridae  
BIN URI: BOLD:ABW3187



[Lateral]  
Myrmaridae  
BIN URI: BOLD:ABW3127



[Lateral]  
Myrmaridae  
BIN URI: BOLD:ACE1230



[Dorsal]  
Hymenoptera  
BIN URI: BOLD:ABZ8208



[Lateral]  
Synopeas  
BIN URI: BOLD:AAU8605



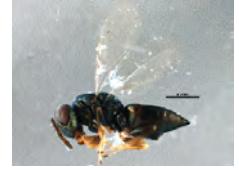
[Lateral]  
Telenomus  
BIN URI: BOLD:ABA5957



[Lateral]  
Platygastridae  
BIN URI: BOLD:AAU8342



[Lateral]  
Hymenoptera  
BIN URI: BOLD:AAN8093



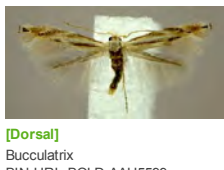
[Lateral]  
Pteromalidae  
BIN URI: BOLD:ACP8541



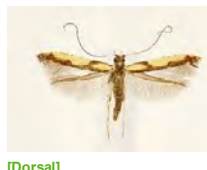
[Lateral]  
*Vespa germanica*  
BIN URI: BOLD:AAG9055



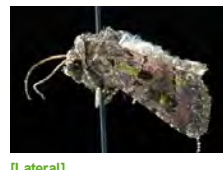
[Dorsal]  
*Bucculatrix pomifoliella*  
BIN URI: BOLD:AAD2085



[Dorsal]  
Bucculatrix  
BIN URI: BOLD:AAH5599



[Dorsal]  
*Caloptilia blandella*  
BIN URI: BOLD:AAC1001



[Lateral]  
*Lacinipolia renigera*  
BIN URI: BOLD:ABZ4680



[Lateral]  
*Hemerobius humulinus*  
BIN URI: BOLD:AAG0892



[Lateral]  
*Valenzuela burmeisteri*  
BIN URI: BOLD:AAO4092



[Lateral]  
Valenzuela  
BIN URI: BOLD:AAP2603



[Lateral]  
Psocoptera  
BIN URI: BOLD:ACA4419



[Dorsal]  
Psocoptera  
BIN URI: BOLD:ACB0984

