

School Malaise Trap Program

Species Image Library

The images of the species collected in your Malaise trap are shown below. A single representative for each species was selected to be photographed; in some cases, only a damaged specimen was available.

Re-render images: per row

300 Records Per Page - Pages: 1



[Dorsal]
Drassodes neglectus
BIN URI: BOLD:AAD8681



[Dorsal]
Erigone aletris
BIN URI: BOLD:AAD1746



[Dorsal]
Tetragnatha laboriosa
BIN URI: BOLD:AAA6381



[Dorsal]
Cheiroseius
BIN URI: BOLD:AAV0589



[Dorsal]
Phalangium opilio
BIN URI: BOLD:AAI4346



[Dorsal]
Coccinella septempunctata
BIN URI: BOLD:AAA8933



[Dorsal]
Atomaria ephippiata
BIN URI: BOLD:AAP7030



[Lateral]
Trachyploeus bifoveolatus
BIN URI: BOLD:AAH0270



[Dorsal]
Cyphon laevipennis
BIN URI: BOLD:AAG3633



[Dorsal]
Philonthus cognatus
BIN URI: BOLD:AAL5087



[Lateral]
Tachyporus rulomus
BIN URI: BOLD:AAP7029



[Lateral]
Staphylinidae
BIN URI: BOLD:ACI4884



[Lateral]
Diptera
BIN URI: BOLD:AAA3453



[Lateral]
Anthomyiidae
BIN URI: BOLD:AAG2451



[Lateral]
Cecidomyiidae
BIN URI: BOLD:ACN7340



[Lateral]
Cecidomyiidae
BIN URI: BOLD:ACP8260



[Lateral]
Ceratopogonidae
BIN URI: BOLD:AA5148



[Lateral]
Chamaemyiidae
BIN URI: BOLD:ACP7794



[Lateral]
Chironomidae
BIN URI: BOLD:ACB0946



[]
Tanytarsus sp.
BIN URI: BOLD:AAD2169



[Lateral]
Orthoclaadiinae
BIN URI: BOLD:ACP9563



[Lateral]
Chloropidae
BIN URI: BOLD:AAH4148



[Lateral]
Aedes campestris
BIN URI: BOLD:AAD7982



[Lateral]
Aedes ventrivittis
BIN URI: BOLD:AAW1988



[Lateral]
Culex tarsalis
BIN URI: BOLD:ABY6040



[Dorsal]
Culiseta
BIN URI: BOLD:AAC9132



[Lateral]
Dolichopodidae
BIN URI: BOLD:AAG9630



[Lateral]
Drosophila
BIN URI: BOLD:AAG8493



[Lateral]
Heleomyzidae
BIN URI: BOLD:AAM7341



[Lateral]
Heleomyzidae
BIN URI: BOLD:AAG0460



[Lateral]
Crossopalpus
BIN URI: BOLD:ABZ0555



[Lateral]
Crossopalpus sp. 1 JMC
BIN URI: BOLD:ACE6928



[Lateral]
Empididae
BIN URI: BOLD:AAF9771



[Lateral]
Platypalpus
BIN URI: BOLD:AAN5504



[Lateral]
Hybotidae
BIN URI: BOLD:AAN5501



[Lateral]
Homoneura
BIN URI: BOLD:ACB1411



[Lateral]
Symplecta
BIN URI: BOLD:AAF9014



[Lateral]
Lonchaeidae
BIN URI: BOLD:AAG7072



[Lateral]
Helina sp.
BIN URI: BOLD:AAC2498



[Lateral]
Muscina pascurum
BIN URI: BOLD:AAG1714



[Lateral]
Muscina levida
BIN URI: BOLD:AAB8817



[Lateral]
Schoenomyza
BIN URI: BOLD:AAG4622



[Lateral]
Mycetophilidae
BIN URI: BOLD:AAG4905



[Lateral]
Mycetophilidae
BIN URI: BOLD:AAL9137



[Lateral]
Mycetophilidae
BIN URI: BOLD:ACP9036



[Lateral]
Mycetophilidae
BIN URI: BOLD:ABV9018



[Lateral]
Phoridae
BIN URI: BOLD:ABU5529



[Lateral]
Phoridae
BIN URI: BOLD:AAG3241



[Lateral]
Phoridae
BIN URI: BOLD:ABV3315



[Lateral]
Phoridae
BIN URI: BOLD:AAL9075



[Lateral]
Phoridae
BIN URI: BOLD:AAG3303



[Lateral]
Phoridae
BIN URI: BOLD:ABX3085



[Lateral]
Phoridae
BIN URI: BOLD:AAM9355



[Lateral]
Psychoda sp.
BIN URI: BOLD:AAL7819



[Lateral]
Psychodidae
BIN URI: BOLD:AAP4581



[Lateral]
Scatopsciara
BIN URI: BOLD:AAH3920



[Lateral]
Sciaridae
BIN URI: BOLD:ABA6488



[Lateral]
Sciaridae
BIN URI: BOLD:AAH3918



[Lateral]
Sepsidae
BIN URI: BOLD:AAC2855



[Lateral]
Spelobia ochripes
BIN URI: BOLD:AAG7279



[Lateral]
Syrphidae
BIN URI: BOLD:AAB2384



[Lateral]
Tachinidae
BIN URI: BOLD:ACP9779



[Dorsal]
Orius
BIN URI: BOLD:ACI3169



[Dorsal]
Hemiptera
BIN URI: BOLD:AAB7937



[Dorsal]
Capitophorus hippophaes
BIN URI: BOLD:AAI3665



[Lateral]
Chaitophorus populicola
BIN URI: BOLD:AAA1279



[Dorsal]
Chaitophorus
BIN URI: BOLD:AAH2856



[Dorsal]
Hemiptera
BIN URI: BOLD:AAO8340



[Lateral]
Macrosteles quadrilineatus
BIN URI: BOLD:AAA9422



[Lateral]
Typhlocyba pomaria
BIN URI: BOLD:AAF5980



[Lateral]
Telamona viridia
BIN URI: BOLD:AAV0268



[Lateral]
Adelphocoris lineolatus
BIN URI: BOLD:ACE7444



[Lateral]
Lygus borealis
BIN URI: BOLD:ACF1336



[Lateral]
Nabis americanoferus
BIN URI: BOLD:AAB8143



[Lateral]
Psyllidae
BIN URI: BOLD:ABW7690



[Dorsal]
Pentrechus convivus
BIN URI: BOLD:AAF5428



[Lateral]
Cotesia jft06
BIN URI: BOLD:AAA8055



[Lateral]
Hymenoptera
BIN URI: BOLD:AAG1421



[Lateral]
Hymenoptera
BIN URI: BOLD:AAU8584



[Dorsal]
Diapriidae
BIN URI: BOLD:AAU8448



[Lateral]
Diapriidae
BIN URI: BOLD:ACP9149



[Lateral]
Belytinae sp. MAS BIN584
BIN URI: BOLD:AAJ8191



[Lateral]
Hymenoptera
BIN URI: BOLD:AAG7882



[Lateral]
Eulophidae
BIN URI: BOLD:ACD3586



[Lateral]
Cynipidae
BIN URI: BOLD:AAU9391



[Lateral]
Camponotus americanus
BIN URI: BOLD:AAD4432



[Lateral]
Formica obscuripes
BIN URI: BOLD:AAB4436



[Lateral]
Formica glacialis
BIN URI: BOLD:AAA1468



[Lateral]
Formica
BIN URI: BOLD:AAE0406



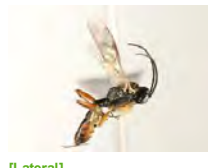
[Lateral]
Formica argentea
BIN URI: BOLD:AAD8688



[Lateral]
Myrmica
BIN URI: BOLD:AAA1848



[Lateral]
Camponotus flavicincta



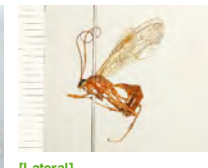
[Lateral]
Campopleginae
BIN URI: BOLD:AAF8320



[Lateral]
Diadromus subtilicornis
BIN URI: BOLD:AAZ7721



[Lateral]
Hymenoptera
BIN URI: BOLD:AAD4214



[Lateral]
Netelia
BIN URI: BOLD:AAI3088



[Lateral]
Orthocentrus JFT02
BIN URI: BOLD:AAU8218



[Lateral]
Ichneumonidae
BIN URI: BOLD:AAG0383



[Lateral]
Scambus
BIN URI: BOLD:ACP9166



[Lateral]
Banchinae
BIN URI: BOLD:AAH1851



[Lateral]
Ichneumonidae
BIN URI: BOLD:ACG2110



[Lateral]
Cryptinae
BIN URI: BOLD:ACN4204



[Lateral]
Ichneumonidae
BIN URI: BOLD:ACI5367



[Lateral]
Ichneumonidae
BIN URI: BOLD:ACB8824



[Lateral]
Ichneumoninae
BIN URI: BOLD:ACP8664



[Lateral]
Orthocentrinae
BIN URI: BOLD:ACP7752



[Lateral]
Acrotomus succinctus
BIN URI: BOLD:AAH2187



[Lateral]
Hymenoptera
BIN URI: BOLD:ACD1467



[adult]
Myrmariidae
BIN URI: BOLD:ACE0609



[Lateral]
Gonatocerus
BIN URI: BOLD:AAG1488



[Lateral]
Gonatocerus
BIN URI: BOLD:AAG3145



[Lateral]
Platygastridae
BIN URI: BOLD:ACC5761



[Lateral]
Platygastridae
BIN URI: BOLD:ACD1768



[Lateral]
Platygastridae
BIN URI: BOLD:ACP7737



[Lateral]
Hymenoptera
BIN URI: BOLD:ACI3485



[Lateral]
Pteromalus
BIN URI: BOLD:AAU9358



[Lateral]
Pteromalus
BIN URI: BOLD:AA8215



[Lateral]
Pteromalidae
BIN URI: BOLD:ACI4931



[Lateral]
Pteromalidae
BIN URI: BOLD:AAG8348



[Lateral]
Pteromalidae
BIN URI: BOLD:ACF7448



[Lateral]
Pteromalidae
BIN URI: BOLD:ACI9027



[Lateral]
Pteromalidae
BIN URI: BOLD:ACP8924



[Lateral]
Pteromalidae
BIN URI: BOLD:ACG4086



[Lateral]
Trichogrammatidae
BIN URI: BOLD:ACP8204



[Lateral]
Vespa pennsylvanica
BIN URI: BOLD:AAG8042



[Dorsal]
Scrobipalpa atriplicella
BIN URI: BOLD:AAA9251



[Dorsal]
Phyllonorycter
BIN URI: BOLD:AAI2946



[Dorsal]
Euxoa auxiliaris
BIN URI: BOLD:ABZ9343



[Dorsal]
Plutella xylostella
BIN URI: BOLD:AAA1513



[Dorsal]
Zeiraphera griseana
BIN URI: BOLD:AAA7907



[Lateral]
Chrysoperla
BIN URI: BOLD:AAB0373



[Lateral]
Hemerobius humulinus
BIN URI: BOLD:AAG0892



[Lateral]
Arphia pseudonietana
BIN URI: BOLD:ACE6932



[Lateral]
Melanoplus
BIN URI: BOLD:AAA4555