

School Malaise Trap Program

Species Image Library

The images of the species collected in your Malaise trap are shown below. A single representative for each species was selected to be photographed; in some cases, only a damaged specimen was available.

Re-render images: per row

300 Records Per Page - Pages: 1



[Dorsal]
Agelenopsis potteri
BIN URI: BOLD: AAB5726



[Dorsal]
Oribatulidae
BIN URI: BOLD: ACF9074



[Dorsal]
Anystidae
BIN URI: BOLD: ABW5642



[Dorsal]
Anystidae
BIN URI: BOLD: ACO3990

IMAGE NOT AVAILABLE

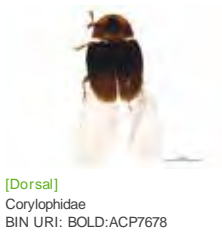
Scutacaridae
BIN URI: BOLD: ACP8285



[Dorsal]
Placopterus
BIN URI: BOLD: AAP8584



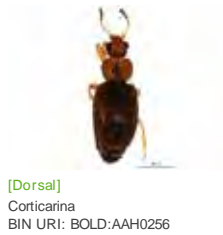
[Dorsal]
Coccinellidae
BIN URI: BOLD: AAB5640



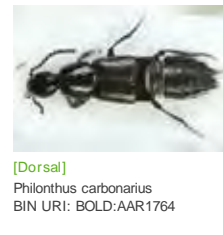
[Dorsal]
Corylophidae
BIN URI: BOLD: ACP7678



[Dorsal]
Sitona hispidulus
BIN URI: BOLD: AAH0130



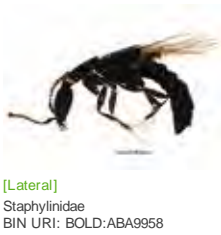
[Dorsal]
Corticarina
BIN URI: BOLD: AAH0256



[Dorsal]
Philonthus carbonarius
BIN URI: BOLD: AAR1764



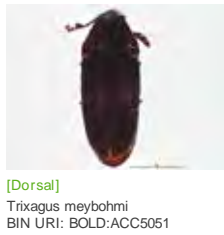
[Lateral]
Tachyporus chrysomelinus
BIN URI: BOLD: AAN9511



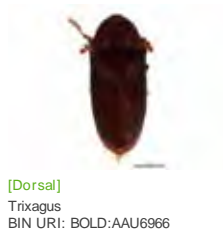
[Lateral]
Staphylinidae
BIN URI: BOLD: ABA9958



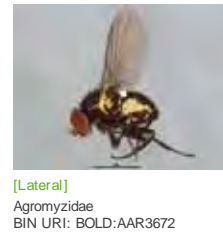
[Dorsal]
Trixagus carnicollis
BIN URI: BOLD: AAN6148



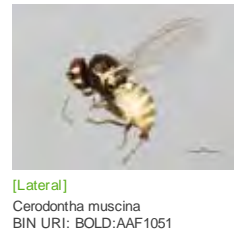
[Dorsal]
Trixagus meyhohmi
BIN URI: BOLD: ACC5051



[Dorsal]
Trixagus
BIN URI: BOLD: AAU6966



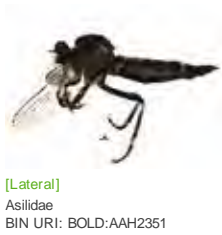
[Lateral]
Agromyzidae
BIN URI: BOLD: AAR3672



[Lateral]
Cerodontha muscina
BIN URI: BOLD: AAF1051



[Lateral]
Anthomyiidae
BIN URI: BOLD: AAG2461



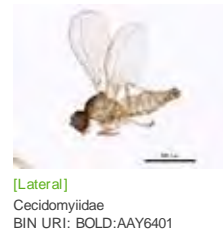
[Lateral]
Asilidae
BIN URI: BOLD: AAH2351



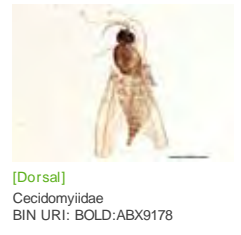
[Lateral]
Diptera
BIN URI: BOLD: AAG6745



[Lateral]
Cecidomyiidae
BIN URI: BOLD: ACB4103



[Lateral]
Cecidomyiidae
BIN URI: BOLD: AAY6401



[Dorsal]
Cecidomyiidae
BIN URI: BOLD: ABX9178



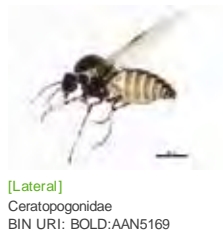
[Lateral]
Cecidomyiidae
BIN URI: BOLD: ACE9497



[Lateral]
Cecidomyiidae
BIN URI: BOLD: AAZ5600



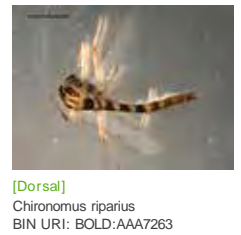
[Lateral]
Cecidomyiidae
BIN URI: BOLD: ACP7843



[Lateral]
Ceratopogonidae
BIN URI: BOLD: AAN5169



[Lateral]
Chironomidae
BIN URI: BOLD: AAM6273



[Dorsal]
Chironomus riparius
BIN URI: BOLD: AAA7263



[Lateral]
Chironomidae
BIN URI: BOLD: AAN5369



[Lateral]
Chironomidae
BIN URI: BOLD: ABU5525



[Lateral]
Micropsectra subletteorum
BIN URI: BOLD: AAF7088



[Dorsal]
Chironomidae
BIN URI: BOLD: AAG5473



[Lateral]
Procladius
BIN URI: BOLD: AAG5513



[Lateral]
Chironomidae
BIN URI: BOLD: ACC4669



[Lateral]
Chironomidae
BIN URI: BOLD: ACI3270



[Lateral]
Chironomidae
BIN URI: BOLD: AAN5336



[Lateral]
Anopheles punctipennis
BIN URI: BOLD: AAC0584



[Lateral]
Dolichopodidae
BIN URI: BOLD: AAM6781



[Lateral]
Dolichopodidae
BIN URI: BOLD: AAM6787



[Lateral]
Dolichopodidae
BIN URI: BOLD: ACC8292



[Lateral]
Dolichopodidae
BIN URI: BOLD: AAG6929



[Lateral]
Dolichopodidae
BIN URI: BOLD: AAM6784



[Lateral]
Platypalpus
BIN URI: BOLD: AAN5504



[Lateral]
Homoneura pincerta
BIN URI: BOLD: AAH3542



[Lateral]
Muscidae
BIN URI: BOLD: AAG1711



[Lateral]
Muscidae
BIN URI: BOLD: AAG1717



[Lateral]
Muscidae
BIN URI: BOLD: ACE9475



[Lateral]
Mycetophilidae
BIN URI: BOLD: AAM8989



[Lateral]
Cordyla
BIN URI: BOLD: ABV9015



[Lateral]
Mycetophilidae
BIN URI: BOLD: AAM8991



[Lateral]
Mycetophilidae
BIN URI: BOLD: ABV9017



[Lateral]
Phoridae
BIN URI: BOLD: AAG3236



[Lateral]
Phoridae
BIN URI: BOLD: AAG3248



[Lateral]
Phoridae
BIN URI: BOLD: ABU5528



[Lateral]
Phoridae
BIN URI: BOLD: AAG3325



[Lateral]
Phoridae
BIN URI: BOLD: ABA6403



[Lateral]
Phoridae
BIN URI: BOLD: AAN8693



[Lateral]
Phoridae
BIN URI: BOLD: AAG3286



[Lateral]
PschoddidGC sp. 1
BIN URI: BOLD: AAE5173



[Lateral]
Diptera
BIN URI: BOLD: AAG6743



[Lateral]
Leptosciarella scutellata
BIN URI: BOLD: ACD1218



[Lateral]
Sciaridae
BIN URI: BOLD: AAH3914



[Lateral]
Sciaridae
BIN URI: BOLD: AAN6452



[Lateral]
Sciaridae
BIN URI: BOLD: AAM9249



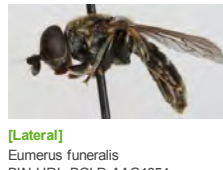
[Lateral]
Sciaridae
BIN URI: BOLD: AAN6447



[Lateral]
Sciaridae
BIN URI: BOLD: AAN6444



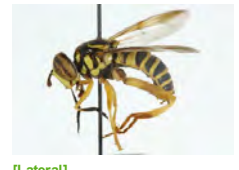
[Lateral]
Sciaridae
BIN URI: BOLD: AAY6412



[Lateral]
Eumerus funeralis
BIN URI: BOLD: AAG4654



[Lateral]
Syrphidae
BIN URI: BOLD: AAB2384



[Lateral]
Spilomyia longicornis
BIN URI: BOLD: AAF3109



[Lateral]
Syrphus vitripennis
BIN URI: BOLD: AAB5577



[Lateral]
Toxomerus geminatus
BIN URI: BOLD: AAC1312



[Lateral]
Nilea erecta
BIN URI: BOLD: AAA1961



[Lateral]
Exoristinae
BIN URI: BOLD: ACP8296



[Lateral]
Procecidochares
BIN URI: BOLD: ACP9698



[Lateral]
Acanalonia conica
BIN URI: BOLD: AAJ5015



[Lateral]
Aleyrodidae
BIN URI: BOLD: AAZ8501



[Lateral]
Aleyrodidae
BIN URI: BOLD: AAZ8500



[Lateral]
Aphis glycines
BIN URI: BOLD: AAB7938



[Dorsal]
Pterocomma smithiae
BIN URI: BOLD: AAF5269



[Dorsal]
Rhopalosiphum padi
BIN URI: BOLD: AAA9899



[Lateral]
Dikraneura
BIN URI: BOLD: AAZ2090



[Lateral]
Eratoneura flexibilis
BIN URI: BOLD: AAZ8495



[Lateral]
Erythroneura
BIN URI: BOLD: ACQ5837



[Lateral]
Jikradia olitoria
BIN URI: BOLD: ABA5861



[Lateral]
Hemiptera
BIN URI: BOLD: AAO4039



[Lateral]
Osbornellus
BIN URI: BOLD: ACP7992



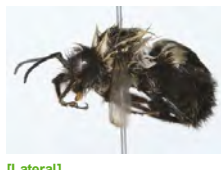
[Lateral]
Cicadellidae
BIN URI: BOLD: ACP8614



[Lateral]
Clastoptera obtusa
BIN URI: BOLD: AAG8823



[Lateral]
Hymenoptera
BIN URI: BOLD: ACF4040



[Lateral]
Bombus impatiens
BIN URI: BOLD: ABZ2516



[Lateral]
Ceratina calcarata
BIN URI: BOLD: AAA2368



[Lateral]
Hymenoptera
BIN URI: BOLD: ACD1702



[Lateral]
Clinocentrus
BIN URI: BOLD: AAH8773



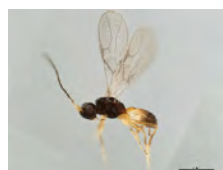
[Lateral]
Dinotrema jft01
BIN URI: BOLD: AAA7636



[Lateral]
Aphidiinae
BIN URI: BOLD: ACP9320



[Lateral]
Praon
BIN URI: BOLD: ACG6495



[Lateral]
Braconidae
BIN URI: BOLD: AAQ2892



[Lateral]
Crossocerus annulipes
BIN URI: BOLD: AAM3798



[Lateral]
Cynipidae
BIN URI: BOLD: ABX2035



[Lateral]
Diapriidae
BIN URI: BOLD: AAU8449



[Lateral]
Diapriidae
BIN URI: BOLD: ACC9388



[Lateral]
Amblyopone
BIN URI: BOLD: AAD4306



[Lateral]
Amblyopone pallipes
BIN URI: BOLD: AAL5963



[Lateral]
Ponerinae
BIN URI: BOLD: AAM7079



[Lateral]
Myrmecina americana
BIN URI: BOLD: ACF3099



[Lateral]
Hymenoptera
BIN URI: BOLD: AAC2392



[Lateral]
Poner pennsylvanica
BIN URI: BOLD: AAF0443



[Lateral]
Poner pennsylvanica
BIN URI: BOLD: AAF0441



[Lateral]
Prenolepis imparis
BIN URI: BOLD: AAC1302



[Lateral]
Campoletis
BIN URI: BOLD: ACP5551



[Lateral]
Lissonota coracina
BIN URI: BOLD: AAG7794



[Lateral]
Hymenoptera
BIN URI: BOLD: AAN8195



[Lateral]
Pimpla pedalis
BIN URI: BOLD: AAD5192



[Lateral]
Pimplinae
BIN URI: BOLD: AAG0387



[Lateral]
Hymenoptera
BIN URI: BOLD: AAP6689



[Lateral]
Hymenoptera
BIN URI: BOLD: AAF7684



[Lateral]
Ichneumonidae
BIN URI: BOLD: ABA5983



[Lateral]
Ichneumonidae
BIN URI: BOLD: ABY7035



[Lateral]
Orthocentrinae
BIN URI: BOLD: AAG0953



[Lateral]
Hymenoptera
BIN URI: BOLD: AAU8999



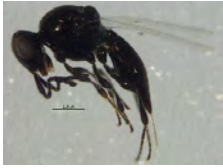
[Lateral]
Megaspilidae
BIN URI: BOLD: ACC6638



[Lateral]
Platygastridae
BIN URI: BOLD: ABV2659



[Lateral]
Platygastridae
BIN URI: BOLD: ABW3192



[Lateral]
Platygastridae
BIN URI: BOLD: ACJ7219



[Lateral]
Pompilidae
BIN URI: BOLD: AAG4386



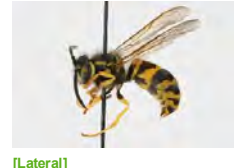
[Lateral]
Hymenoptera
BIN URI: BOLD: AAU8576



[Adult]
Nesoselandria morio
BIN URI: BOLD: AAU8235



[Lateral]
Vespula flavopilosa
BIN URI: BOLD: AAG7678



[Lateral]
Vespula maculifrons
BIN URI: BOLD: AAD5993



[Dorsal]
Syncopacma
BIN URI: BOLD: AAF9988



[Dorsal]
Acrolophus mora
BIN URI: BOLD: AAB7857



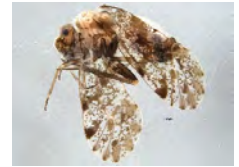
[Lateral]
Coniopterygidae
BIN URI: BOLD: ACA4191



[Lateral]
Psocoptera
BIN URI: BOLD: AAN8450



[Lateral]
Psocoptera
BIN URI: BOLD: AAH3232



[Lateral]
Psocoptera
BIN URI: BOLD: ACE6318



[Lateral]
Psocoptera
BIN URI: BOLD: AAP4625



[Lateral]
Ceratopsyche sparna
BIN URI: BOLD: AAA2528



[Lateral]
Neophylax concinnus
BIN URI: BOLD: AAC3072