

School Malaise Trap Program

Species Image Library

The images of the species collected in your Malaise trap are shown below. A single representative for each species was selected to be photographed; in some cases, only a damaged specimen was available.

Re-render images: per row

300 Records Per Page - Pages: 1



[Dorsal]
Ceratinops crenatus
BIN URI: BOLD:ACF8798



[Dorsal]
Pardosa milvina
BIN URI: BOLD:AAB7668



[Lateral]
Trochosa ruricola
BIN URI: BOLD:AAB0726



[Dorsal]
Ascidae
BIN URI: BOLD:ACF8020



[Dorsal]
Ascidae
BIN URI: BOLD:ABW2693



[Dorsal]
Blattisociidae
BIN URI: BOLD:ACJ0472



[Dorsal]
Phytoseiidae
BIN URI: BOLD:ACH4020



Trombidiformes
BIN URI: BOLD:ACP7655



[Lateral]
Entomobrya multifasciata
BIN URI: BOLD:AAA7242



[Lateral]
Isotomidae
BIN URI: BOLD:ACJ0127



[Lateral]
Bourletiellidae
BIN URI: BOLD:ACP8634



[Dorsal]
Bourletiellidae
BIN URI: BOLD:AAN4906



[Dorsal]
Collembola
BIN URI: BOLD:AAI4706



[Dorsal]
Coleoptera
BIN URI: BOLD:ABA9097



[Lateral]
Aeolus mellillus
BIN URI: BOLD:AAP6369



[Dorsal]
Corticina
BIN URI: BOLD:AAH0256



[Dorsal]
Glischrochilus moratus
BIN URI: BOLD:AAG5778



[Lateral]
Staphylinidae
BIN URI: BOLD:ABW2870



[Dorsal]
Atheta hansseni
BIN URI: BOLD:ABA6362



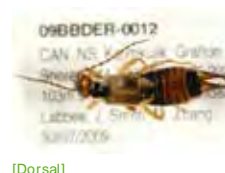
[Dorsal]
Trixagus carnicollis
BIN URI: BOLD:AAN6148



[Dorsal]
Throscidae
BIN URI: BOLD:ACF8584



[Dorsal]
Trixagus
BIN URI: BOLD:ABW2869



[Dorsal]
Forficula auricularia-A
BIN URI: BOLD:AAG9897



[Lateral]
Agromyzidae
BIN URI: BOLD:AAM6324



[Lateral]
Eustalomya sp. 28.iv.2001
BIN URI: BOLD:AAG2513



[Lateral]
Diptera
BIN URI: BOLD:AAG6745



[Lateral]
Cecidomyiidae
BIN URI: BOLD:AAN5268



[Lateral]
Cecidomyiidae
BIN URI: BOLD:AAN5250



[Lateral]
Cecidomyiidae
BIN URI: BOLD:AAP9021



[Lateral]
Cecidomyiidae
BIN URI: BOLD:ABX0130



[Lateral]
Ceratopogonidae
BIN URI: BOLD: AAN5148



[Lateral]
Ceratopogonidae
BIN URI: BOLD: AAG6433



[Lateral]
Ceratopogonidae
BIN URI: BOLD: ACP7999



[Lateral]
Chironomus cf. decorus
BIN URI: BOLD: AAB7030



[Dorsal]
Chironomus riparius
BIN URI: BOLD: AAA7263



[Lateral]
Cricotopus
BIN URI: BOLD: AAP5920



[Lateral]
Cricotopus annulator cplx
BIN URI: BOLD: ABY9141



[Lateral]
Chironomidae
BIN URI: BOLD: ABU5525



[Dorsal]
Paracladopelma winnelli
BIN URI: BOLD: AAK4963



[Lateral]
Chironomidae
BIN URI: BOLD: AAI2681



[Lateral]
Procladius
BIN URI: BOLD: AAG5513



[Lateral]
Procladius
BIN URI: BOLD: AAM6227



[Lateral]
Chironomidae
BIN URI: BOLD: AAF4817



[Dorsal]
Chironomidae
BIN URI: BOLD: ACP4736



[Lateral]
Chironomidae
BIN URI: BOLD: AAN5342



[Lateral]
Chironomidae
BIN URI: BOLD: ACM1709



[Dorsal]
Chironomidae
BIN URI: BOLD: AAL7370



[Lateral]
Chloropidae
BIN URI: BOLD: AAV6114



[Lateral]
Aedes vexans
BIN URI: BOLD: AAA7067



[Lateral]
Drosophilidae
BIN URI: BOLD: AAI9091



[Lateral]
Drosophilidae
BIN URI: BOLD: AAG8491



[Lateral]
Drosophila
BIN URI: BOLD: AAG8493



[Lateral]
Platypalpus trivialis
BIN URI: BOLD: AAP8908



[Lateral]
Dicranomyia
BIN URI: BOLD: ACC9085



[Lateral]
Erioptera caliptera
BIN URI: BOLD: AAN5882



[Lateral]
Coenosia tigrina
BIN URI: BOLD: AAB5609



[Lateral]
Muscidae
BIN URI: BOLD: AAG1717



[Lateral]
Muscina pascuorum
BIN URI: BOLD: AAG1714



[Lateral]
Mycetophilidae
BIN URI: BOLD: AAG4905



[Lateral]
Mycetophilidae
BIN URI: BOLD: AAN8586



[Lateral]
Phoridae
BIN URI: BOLD: AAG3236



[Lateral]
Phoridae
BIN URI: BOLD: AAG3248



[Lateral]
Phoridae
BIN URI: BOLD: AAM9355



[Lateral]
Psychoda sp.
BIN URI: BOLD: AAL7819



[Lateral]
Psychodidae
BIN URI: BOLD: AAZ5592



[Lateral]
Diptera
BIN URI: BOLD: AAG6743



[Lateral]
Sarcophagidae
BIN URI: BOLD: AAG3629



[Lateral]
Sciaridae
BIN URI: BOLD: AAM9252



[Lateral]
Sciaridae
BIN URI: BOLD: AAH3914



[Lateral]
Sciaridae
BIN URI: BOLD: ABU5520



[Lateral]
Sciaridae
BIN URI: BOLD: ABA6407



[Lateral]
Sciaridae
BIN URI: BOLD: ACB5164



[Lateral]
Sciaridae
BIN URI: BOLD:AAM9255



[Lateral]
Sciaridae
BIN URI: BOLD:AAH3947



[Lateral]
Simulium
BIN URI: BOLD:AAB1114



[Lateral]
Sphaeroceridae
BIN URI: BOLD:AAG7284



[Lateral]
Spelobia ochripes
BIN URI: BOLD:AAG7279



[Lateral]
Microchrysa polita
BIN URI: BOLD:AAH6506



[Lateral]
Syrphidae
BIN URI: BOLD:AAB2384



[Lateral]
Platycheirus scambus
BIN URI: BOLD:AAD3756



[Lateral]
Tipulidae
BIN URI: BOLD:AAF9041



[Lateral]
Tipula paludosa
BIN URI: BOLD:AAE7386



[Lateral]
Nearctaphis crataegifoliae
BIN URI: BOLD:ACF1270



[Dorsal]
Rhopalosiphum padi
BIN URI: BOLD:AAA9899



[Dorsal]
Utamphorophora humboldti
BIN URI: BOLD:ACJ3033



[Dorsal]
Empoasca
BIN URI: BOLD:AAG2868



[Lateral]
Empoasca
BIN URI: BOLD:ABZ4247



[Dorsal]
Typhlocybinae
BIN URI: BOLD:ABW2937



[Lateral]
Forcipata loca
BIN URI: BOLD:ACC8165



[Lateral]
Macrosteles quadriineatus
BIN URI: BOLD:AAA9422



[Lateral]
Hemiptera
BIN URI: BOLD:AAG2898



[Lateral]
Muroidelphax
BIN URI: BOLD:AAC3517



[Lateral]
Dichroscytus repletus
BIN URI: BOLD:AAL0821



[Lateral]
Aphelinus varipes
BIN URI: BOLD:ABW3282



[Lateral]
Aphelinidae
BIN URI: BOLD:ACP8048



[Lateral]
Apanteles ensiger
BIN URI: BOLD:ACE6783



[Lateral]
Hymenoptera
BIN URI: BOLD:ABY7565



[Lateral]
Aphidius rhopalosiphii
BIN URI: BOLD:ABZ3101



[Lateral]
Hymenoptera
BIN URI: BOLD:AAU8379



[Lateral]
Dinotrema
BIN URI: BOLD:AAU8452



[Lateral]
Glyptapanteles sp.
BIN URI: BOLD:AAA4781



[Lateral]
Praon
BIN URI: BOLD:ACE2830



[Lateral]
Hymenoptera
BIN URI: BOLD:AAU8585



[Lateral]
Braconidae
BIN URI: BOLD:AAG1352



[Lateral]
Hymenoptera
BIN URI: BOLD:AAU8584



[Lateral]
Braconidae
BIN URI: BOLD:ABA8036



[Lateral]
Braconidae
BIN URI: BOLD:AAH8212



[Lateral]
Hymenoptera
BIN URI: BOLD:AAG1429



[Lateral]
Braconidae
BIN URI: BOLD:AAQ2892



[Lateral]
Hymenoptera
BIN URI: BOLD:AAU8618



[Dorsal]
Belytinae
BIN URI: BOLD:AAU9829



[Lateral]
Hymenoptera
BIN URI: BOLD:ABY3589



[Lateral]
Hymenoptera
BIN URI: BOLD:ACA9177



[Lateral]
Lasius
BIN URI: BOLD:ACE8630



[Lateral]
Tetramorium caespitum
BIN URI: BOLD:AAB8259



[Lateral]
Ichneumonidae
BIN URI: BOLD:AAG5788



[Lateral]
Lissonota coracina
BIN URI: BOLD:AAG7794



[Lateral]
Lissonota
BIN URI: BOLD:ACJ6551



[Lateral]
Mesochorus americanus
BIN URI: BOLD:ACP8673



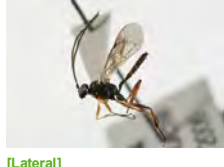
[Lateral]
Mesochorus americanus
BIN URI: BOLD:AAJ6795



[Lateral]
Hymenoptera
BIN URI: BOLD:ACE3697



[Lateral]
Hymenoptera
BIN URI: BOLD:ACF3297



[Lateral]
Cryptinae sp. MAS
BIN URI: BOLD:AAF1382



[Lateral]
Orthocentrinae
BIN URI: BOLD:AAG8257



[Lateral]
Ichneumoninae
BIN URI: BOLD:AAH7265



[Dorsal]
Megaspilidae
BIN URI: BOLD:ACK1416



[Dorsal]
Hymenoptera
BIN URI: BOLD:ACJ7345



[Lateral]
Hymenoptera
BIN URI: BOLD:ABY3391



[Dorsal]
Mymaridae
BIN URI: BOLD:AAU9164



[Lateral]
Mymaridae
BIN URI: BOLD:ABW3127



[Lateral]
Hymenoptera
BIN URI: BOLD:ABX2601



[Lateral]
Mymaridae
BIN URI: BOLD:ACB6947



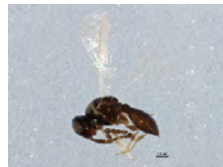
[Lateral]
Acordulecera
BIN URI: BOLD:AAG8280



[Dorsal]
Hymenoptera
BIN URI: BOLD:ABZ8208



[Dorsal]
Platygastridae
BIN URI: BOLD:AAG7886



[Lateral]
Platygastridae
BIN URI: BOLD:ABW3192



[Lateral]
Platygastridae
BIN URI: BOLD:AAU8342



[Lateral]
Scellioninae
BIN URI: BOLD:ACP8672



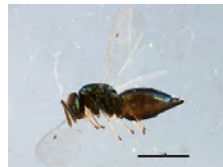
[Lateral]
Telenomus
BIN URI: BOLD:ABA6265



[Lateral]
Cecidostiba
BIN URI: BOLD:ABW3206



[Lateral]
Dibrachys cavus
BIN URI: BOLD:ABA6037



[Lateral]
Mesopolobus incultus
BIN URI: BOLD:AAZ7491



[Lateral]
Pteromalidae
BIN URI: BOLD:ACC8557



[Lateral]
Trichogramma platneri
BIN URI: BOLD:AAE0242



[Lateral]
Polistes dominula
BIN URI: BOLD:AAB7105



[Dorsal]
Bedellia somnulentella
BIN URI: BOLD:AAI7773



[Dorsal]
Syncopacma
BIN URI: BOLD:AAF9988



[Dorsal]
Parectopa occulta
BIN URI: BOLD:AAD5802



[Dorsal]
Peridroma saucia
BIN URI: BOLD:AAA6377



[Lateral]
Sunira bicolorago
BIN URI: BOLD:AAA4426



[Dorsal]
Monopis pavlovskii
BIN URI: BOLD:AAE4730



[Lateral]
Coniopterygidae
BIN URI: BOLD:ACG2784



[Lateral]
Hemerobius humulinus
BIN URI: BOLD:AAG0892



[Lateral]
Micromus
BIN URI: BOLD:AAG0893



[Dorsal]
Psocoptera
BIN URI: BOLD:AAH3229



[Lateral]
Valenzuela burmeisteri
BIN URI: BOLD:AAO4092



[Lateral]
Psocoptera
BIN URI: BOLD:AAN8447



[Lateral]
Psocoptera
BIN URI: BOLD:ABA6163



[Lateral]
Valenzuela
BIN URI: BOLD:AAP2603



[Dorsal]
Psocoptera
BIN URI: BOLD:ACA3113



[Lateral]
Psocoptera
BIN URI: BOLD:AAF1729



[Lateral]
Psocoptera
BIN URI: BOLD:ACA2933



[Lateral]
Psocoptera
BIN URI: BOLD:ABA6546



[Lateral]
Ceratopsyche spama
BIN URI: BOLD:AAA2528



[Lateral]
Hydroptila waubesiana
BIN URI: BOLD:AAB2127



[Lateral]
Limnephilus submonilifer
BIN URI: BOLD:AAA3080