

# School Malaise Trap Program

## Species Image Library

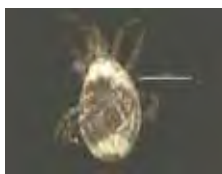
The images of the species collected in your Malaise trap are shown below. A single representative for each species was selected to be photographed; in some cases, only a damaged specimen was available.

Re-render images:  per row

300 Records Per Page - Pages: 1



[Dorsal]  
Phytoseiidae  
BIN URI: BOLD:ACB9781



[Dorsal]  
Arachnida  
BIN URI: BOLD:ACK8761



[Dorsal]  
Sarcoptiformes  
BIN URI: BOLD:ACP8133



[Lateral]  
Tydeus  
BIN URI: BOLD:AAH3904



[Dorsal]  
Entomobryidae  
BIN URI: BOLD:AAI5219



[Lateral]  
Collembola  
BIN URI: BOLD:ACC0359



[Lateral]  
Brentidae  
BIN URI: BOLD:AAH6210



[Dorsal]  
*Acalymma vittatum*  
BIN URI: BOLD:AAF4335



[Dorsal]  
*Psyllodes napi*  
BIN URI: BOLD:ABA4532



[Dorsal]  
Galerucinae  
BIN URI: BOLD:ACK1281



[Dorsal]  
Coccinellidae  
BIN URI: BOLD:AAB5640



[Dorsal]  
*Psyllobora vigintimaculata*  
BIN URI: BOLD:AAH3320



[Dorsal]  
*Sitona hispidulus*  
BIN URI: BOLD:AAH0130



[Dorsal]  
Erotylidae  
BIN URI: BOLD:ABA6320



[Dorsal]  
Latridiidae  
BIN URI: BOLD:AAM7680



[Lateral]  
*Cyphon obscurus*  
BIN URI: BOLD:AAH0074



[Dorsal]  
Scirtidae  
BIN URI: BOLD:AAH5931



[Dorsal]  
*Trixagus carinicollis*  
BIN URI: BOLD:AAH6148



[Lateral]  
Agromyzidae  
BIN URI: BOLD:AAR3672



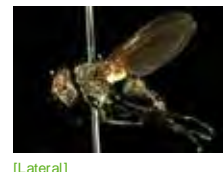
[Lateral]  
*Phytomyza erigerophila*  
BIN URI: BOLD:AAH9375



[Lateral]  
*Phytomyza crassisetata*  
BIN URI: BOLD:AAL4268



[Lateral]  
Anthomyiidae  
BIN URI: BOLD:AAH5497



[Lateral]  
Diptera  
BIN URI: BOLD:AAG6745



[Lateral]  
*Pollenia rudis*  
BIN URI: BOLD:AAH3035



[Lateral]  
Chironomidae  
BIN URI: BOLD:ACM9978



[Lateral]  
*Ablabesmyia americana*  
BIN URI: BOLD:AAC8567



[Lateral]  
*Bryophaenocladus* sp. 8ES  
BIN URI: BOLD:AAG1021



[Lateral]  
Chironomidae  
BIN URI: BOLD:AAG5453



[Lateral]  
Cricotopus  
BIN URI: BOLD:ACC7282



[Lateral]  
*Cricotopus* sp. 18ES  
BIN URI: BOLD:AAG0996



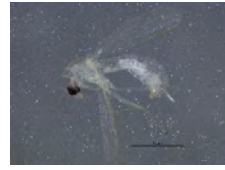
[Lateral]  
*Microtendipes tritonus*  
BIN URI: BOLD:AAC0706



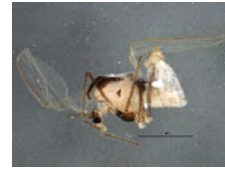
[Lateral]  
*Parachironomus frequens*  
BIN URI: BOLD:AAG5461



[Lateral]  
*Paraphaenocladus impensus*  
BIN URI: BOLD:AAC4197



[Lateral]  
*Paratanytarsus*  
BIN URI: BOLD:ACI6752



[Lateral]  
*Paratanytarsus* sp. 7TE  
BIN URI: BOLD:ACM2401



[Lateral]  
*Paratanytarsus*  
BIN URI: BOLD:ACM0997



[Lateral]  
*Procladius*  
BIN URI: BOLD:AAG5513



[Lateral]  
Chironomidae  
BIN URI: BOLD:AAF4817



[Dorsal]  
Chironomidae  
BIN URI: BOLD:ACP4736



[Lateral]  
Chironomidae  
BIN URI: BOLD:ACM2385



[Lateral]  
*Xenochironomus xenolabis*  
BIN URI: BOLD:ACL4234



[Lateral]  
Chironomidae  
BIN URI: BOLD:ABA0772



[Lateral]  
Chironomidae  
BIN URI: BOLD:ACB1854



[Lateral]  
Chironomidae  
BIN URI: BOLD:ACF0915



[Lateral]  
Chironomidae  
BIN URI: BOLD:ACE0699



[Lateral]  
Chironomidae  
BIN URI: BOLD:AAN5342



[Lateral]  
Chironomidae  
BIN URI: BOLD:AAL7343



[Lateral]  
Chironomidae  
BIN URI: BOLD:ABV1221



[Lateral]  
Chironomidae  
BIN URI: BOLD:ACK9771



[Lateral]  
Chironominae  
BIN URI: BOLD:ACP8194



[Dorsal]  
Chironomidae  
BIN URI: BOLD:AAG5506



[Lateral]  
Chironomidae  
BIN URI: BOLD:ACA2919



[Lateral]  
Orthocladinae  
BIN URI: BOLD:ACP9411



[Lateral]  
Chironomidae  
BIN URI: BOLD:ABV1203



[Lateral]  
Chironomidae  
BIN URI: BOLD:ACC7822



[Lateral]  
Chironomidae  
BIN URI: BOLD:AAN7576



[Lateral]  
Chloropidae  
BIN URI: BOLD:ABW1379



[Lateral]  
Ephydriidae  
BIN URI: BOLD:AAG2762



[Lateral]  
*Coenosia tigrina*  
BIN URI: BOLD:AAB5609



[Lateral]  
*Muscina pascurum*  
BIN URI: BOLD:AAG1714



[Lateral]  
Phoridae  
BIN URI: BOLD:AAG3236



[Lateral]  
Phoridae  
BIN URI: BOLD:AAG3322



[Lateral]  
Phoridae  
BIN URI: BOLD:ACA5992



[Lateral]  
Phoridae  
BIN URI: BOLD:AAM9355



[Lateral]  
Phoridae  
BIN URI: BOLD:AAG3316



[Lateral]  
Scatopsidae  
BIN URI: BOLD:AAN8523



[Lateral]  
Sciaridae  
BIN URI: BOLD:ABA0929



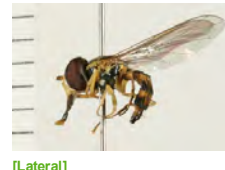
[Lateral]  
Sciaridae  
BIN URI: BOLD:AAN6444



[Lateral]  
Sciaridae  
BIN URI: BOLD:ABU5520



[Lateral]  
Sciaridae  
BIN URI: BOLD:AAN6447



[Lateral]  
*Toxomerus geminatus*  
BIN URI: BOLD:AAC1312



[Lateral]  
Aleyrodidae  
BIN URI: BOLD:AAZ8501





[Lateral]  
Aleyrodidae  
BIN URI: BOLD:AAZ8499



[Dorsal]  
Aphis spiraeicola  
BIN URI: BOLD:AAA4183



[Lateral]  
Aphis  
BIN URI: BOLD:ACP7809



[Lateral]  
Capitophorus elaeagni  
BIN URI: BOLD:AAE3015



[Lateral]  
Capitophorus  
BIN URI: BOLD:ACP9661



[Dorsal]  
Cavariella aegopodii  
BIN URI: BOLD:AAD2527



[Dorsal]  
Drepanaphis kanzensis  
BIN URI: BOLD:AAZ8898



[Lateral]  
Drepanaphis  
BIN URI: BOLD:AAZ8896



[Lateral]  
Hemiptera  
BIN URI: BOLD:AAZ4239



[Lateral]  
Rhopalosiphum nymphaeae  
BIN URI: BOLD:AAE3554



[Dorsal]  
Rhopalosiphum padi  
BIN URI: BOLD:AAA9899



[Dorsal]  
Hemiptera  
BIN URI: BOLD:AAG3896



[Lateral]  
Therioaphis trifolii  
BIN URI: BOLD:AAA3759



[Dorsal]  
Utamphorophora humboldti  
BIN URI: BOLD:ACJ3033



[Lateral]  
Philaenus spumarius  
BIN URI: BOLD:AAZ1850



[Lateral]  
Empoasca  
BIN URI: BOLD:ACF5026



[Dorsal]  
Erythroneura vulnerata  
BIN URI: BOLD:ACP8307



[Lateral]  
Erythroneura vulnerata  
BIN URI: BOLD:ABY9043



[Dorsal]  
Erythroneura  
BIN URI: BOLD:ABA5864



[Lateral]  
Forcipata loca  
BIN URI: BOLD:ACC8165



[Dorsal]  
Lygus lineolaris  
BIN URI: BOLD:AAA5803



[Dorsal]  
Trigonotylus pulchellus  
BIN URI: BOLD:AAF9949



[Lateral]  
Psyllidae  
BIN URI: BOLD:ABW7690



[Lateral]  
Hemiptera  
BIN URI: BOLD:ACL9999



[Dorsal]  
Corythucha marmorata  
BIN URI: BOLD:AAZ9127



[Lateral]  
Aphelinidae  
BIN URI: BOLD:ACC1623



[Lateral]  
Ceratina calcarata  
BIN URI: BOLD:AAA2368



[Lateral]  
Hymenoptera  
BIN URI: BOLD:ABY7565



[Lateral]  
Aphidius rhopalosiphii  
BIN URI: BOLD:AAD6802



[Lateral]  
Aphidiinae  
BIN URI: BOLD:AAA4188



[Lateral]  
Cotesia sp.  
BIN URI: BOLD:ABZ3751



[Lateral]  
Hymenoptera  
BIN URI: BOLD:AAU8379



[Lateral]  
Pholetesor sp.  
BIN URI: BOLD:AAE0327



[Lateral]  
Praon  
BIN URI: BOLD:ACD7210



[Lateral]  
Alysiainae  
BIN URI: BOLD:AAG1289



[Lateral]  
Alysiainae  
BIN URI: BOLD:AAG8350



[Lateral]  
Hymenoptera  
BIN URI: BOLD:AAU8584



[Lateral]  
Braconidae  
BIN URI: BOLD:ABA8066



[Lateral]  
Hymenoptera  
BIN URI: BOLD:AAG1429



[Lateral]  
Hymenoptera  
BIN URI: BOLD:AAP6708



[Lateral]  
Hymenoptera  
BIN URI: BOLD:AAU8567



[Lateral]  
Diapriidae  
BIN URI: BOLD:ABA5906



[Lateral]  
Diapriidae  
BIN URI: BOLD:ABA5937



[Lateral]  
Diapriidae  
BIN URI: BOLD:ABX2607



[Lateral]  
Hymenoptera  
BIN URI: BOLD:ACL1491



[Lateral]  
Cynipidae  
BIN URI: BOLD:ACL7968



[Lateral]  
Camponotus americanus  
BIN URI: BOLD:AAD4432



[Lateral]  
Formica glacialis  
BIN URI: BOLD:AAA1468



[Lateral]  
Lasius  
BIN URI: BOLD:AAB9126



[Lateral]  
Cymodusa distincta  
BIN URI: BOLD:ABZ4363



[Lateral]  
Lissonota coracina  
BIN URI: BOLD:AAG7794



[Lateral]  
Hymenoptera  
BIN URI: BOLD:ABZ7958



[Lateral]  
Hymenoptera  
BIN URI: BOLD:AAP6689



[Lateral]  
Sussaba dorsalis  
BIN URI: BOLD:AAU8613



[Lateral]  
Ichneumonidae  
BIN URI: BOLD:AAZ6819



[Lateral]  
Ichneumonidae  
BIN URI: BOLD:ABA5920



[Lateral]  
Ichneumonidae  
BIN URI: BOLD:ACC7897



[Lateral]  
Tersilochinae sp. MAS  
BIN URI: BOLD:AAL8256



[Lateral]  
Ichneumonidae  
BIN URI: BOLD:ABY7035



[Lateral]  
Gonatocerus morrilli  
BIN URI: BOLD:AAU9165



[Lateral]  
Myrmecidae  
BIN URI: BOLD:AAZ0173



[Dorsal]  
Hymenoptera  
BIN URI: BOLD:ABZ8208



[Dorsal]  
Synopeas  
BIN URI: BOLD:AAU8671



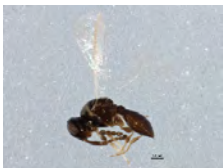
[Lateral]  
Synopeas  
BIN URI: BOLD:AAU8605



[Lateral]  
Telenomus  
BIN URI: BOLD:AAG7891



[Lateral]  
Platygastridae  
BIN URI: BOLD:AAU8432



[Lateral]  
Platygastridae  
BIN URI: BOLD:ABW3192



[Lateral]  
Platygastridae  
BIN URI: BOLD:ACJ7394



[Lateral]  
Platygastridae  
BIN URI: BOLD:ACK1526



[Lateral]  
Telenomus  
BIN URI: BOLD:AAU9439



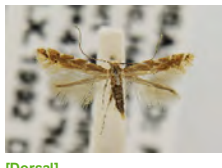
[Dorsal]  
Pristiphora rufipes  
BIN URI: BOLD:AAI2590



[Lateral]  
Ancistrocerus adiabatus  
BIN URI: BOLD:AAC5427



[Lateral]  
Vespa germanica  
BIN URI: BOLD:AAG9055



[Dorsal]  
Cremastobomyia solidaginis  
BIN URI: BOLD:AAC4262



[Dorsal]  
Choristoneura rosaceana  
BIN URI: BOLD:AAA1517



[Lateral]  
Chrysoperla rufilabris  
BIN URI: BOLD:ACC7133



[Dorsal]  
Psocoptera  
BIN URI: BOLD:AAH3229



[Lateral]  
Psocoptera  
BIN URI: BOLD:AAH4447



[Lateral]  
Psocoptera  
BIN URI: BOLD:ABA6163



[Lateral]  
Psocoptera  
BIN URI: BOLD:ACA2933



[Lateral]  
Psocoptera  
BIN URI: BOLD:ACA3112



[Lateral]  
Psocoptera  
BIN URI: BOLD:ACL1784



[Lateral]  
Agraylea multipunctata  
BIN URI: BOLD:AAA3877



[Lateral]  
Hydroptila waubesiana  
BIN URI: BOLD:AAB2127

