

# School Malaise Trap Program

## Species Image Library

The images of the species collected in your Malaise trap are shown below. A single representative for each species was selected to be photographed; in some cases, only a damaged specimen was available.

Re-render images:  per row

300 Records Per Page - Pages: 1



[Dorsal]  
*Cheiracanthium mildei*  
BIN URI: BOLD: AAB7601



[Dorsal]  
*Mimetus notius*  
BIN URI: BOLD: AAE0114



[Dorsal]  
*Philodromus mineri*  
BIN URI: BOLD: AAL5085



[Dorsal]  
Anystidae  
BIN URI: BOLD: ACP8731



[Dorsal]  
Anystidae  
BIN URI: BOLD: ACP8046



[Lateral]  
Entomobrya  
BIN URI: BOLD: ACL6239



[Lateral]  
*Enoclerus nigripes rufiventris*  
BIN URI: BOLD: AAU6970



[Dorsal]  
Coccinellidae  
BIN URI: BOLD: AAB5640



[Dorsal]  
*Psyllobora vigintimaculata*  
BIN URI: BOLD: AAH3320



[Dorsal]  
Scymnus  
BIN URI: BOLD: ACP8868



[Dorsal]  
Coccinellidae  
BIN URI: BOLD: AAP7830



[Dorsal]  
*Sitona hispidulus*  
BIN URI: BOLD: AAH0130



[Lateral]  
*Tychius picrostris*  
BIN URI: BOLD: AAP7027



[Dorsal]  
Corticarina  
BIN URI: BOLD: AAH0256



[Dorsal]  
Phalacridae  
BIN URI: BOLD: AAG4848



[Dorsal]  
*Tachyporus atriceps*  
BIN URI: BOLD: ABX2484



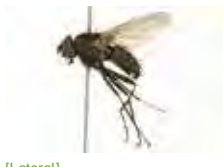
[Dorsal]  
Trixagus  
BIN URI: BOLD: ABW2869



[Lateral]  
*Cerodontha muscina*  
BIN URI: BOLD: AAF1051



[Lateral]  
*Delia platyura*  
BIN URI: BOLD: AAG2511



[Lateral]  
Anthomyiidae  
BIN URI: BOLD: AAG2460



[Lateral]  
Hydrophoria  
BIN URI: BOLD: ACP7357



[Lateral]  
Diptera  
BIN URI: BOLD: AAG6745



[Lateral]  
Cecidomyiidae  
BIN URI: BOLD: ABV1222



[Dorsal]  
Cecidomyiidae  
BIN URI: BOLD: AAP9022



[Lateral]  
Cecidomyiidae  
BIN URI: BOLD: ABA6448



[Lateral]  
Cecidomyiidae  
BIN URI: BOLD: AAZ5600



[Dorsal]  
Chironomidae  
BIN URI: BOLD: ACP4736



[Lateral]  
Chironomidae  
BIN URI: BOLD: AAN5342



[Dorsal]  
Chloropidae  
BIN URI: BOLD: ACP8274



[Lateral]  
*Aedes vexans*  
BIN URI: BOLD: AAA7067



[Lateral]  
Heleomyzidae  
BIN URI: BOLD:AAG0459



[Lateral]  
Platypalpus unguiculatus  
BIN URI: BOLD:ABA0579



[Lateral]  
Coenosia tigrina  
BIN URI: BOLD:AAB5609



[Lateral]  
Muscidae  
BIN URI: BOLD:AAG1711



[Lateral]  
Muscidae  
BIN URI: BOLD:AAG1717



[Lateral]  
Schoenomyza  
BIN URI: BOLD:AAG1777



[Lateral]  
Muscidae  
BIN URI: BOLD:ACE9475



[Lateral]  
Phoridae  
BIN URI: BOLD:ABU5529



[Lateral]  
Phoridae  
BIN URI: BOLD:AAL9075



[Lateral]  
Boettcheria cimbicis  
BIN URI: BOLD:AAG6756



[Lateral]  
Diptera  
BIN URI: BOLD:AAG6743



[Lateral]  
Sciaridae  
BIN URI: BOLD:AAH3939



[Lateral]  
Lycoriella castanescens  
BIN URI: BOLD:ABA1215



[Lateral]  
Sciaridae  
BIN URI: BOLD:AAH6447



[Lateral]  
Sciaridae  
BIN URI: BOLD:AAH6770



[Lateral]  
Sciaridae  
BIN URI: BOLD:ABA6407



[Lateral]  
Platycheirus immarginatus  
BIN URI: BOLD:AAA9506



[Lateral]  
Oswaldia assimilis  
BIN URI: BOLD:AAZ4669



[Lateral]  
Tachinidae  
BIN URI: BOLD:AAH6458



[Lateral]  
Aphis glycines  
BIN URI: BOLD:AAB7938



[Lateral]  
Eulachnus agilis  
BIN URI: BOLD:ACF4455



[Dorsal]  
Macrosiphum euphorbiae  
BIN URI: BOLD:AAA6213



[Dorsal]  
Myzocallis asclepiadis  
BIN URI: BOLD:AAE3464



[Lateral]  
Rhopalosiphum nymphaeae  
BIN URI: BOLD:AAE3554



[Dorsal]  
Rhopalosiphum padi  
BIN URI: BOLD:AAA9899



[Lateral]  
Schizaphis graminum  
BIN URI: BOLD:ACI4702



[Dorsal]  
Aphididae  
BIN URI: BOLD:ACI4644



[Dorsal]  
Uroleucon anomalae  
BIN URI: BOLD:AAF8506



[Lateral]  
Uroleucon luteolum  
BIN URI: BOLD:AAG5616



[Lateral]  
Aphrophora alni  
BIN URI: BOLD:AAZ2091



[Lateral]  
Cercopidae  
BIN URI: BOLD:AAG8827



[Lateral]  
Philaenus spumarius  
BIN URI: BOLD:AAB1850



[Lateral]  
Empoasca decipiens  
BIN URI: BOLD:AAV6741



[Lateral]  
Empoasca  
BIN URI: BOLD:AAG2873



[Lateral]  
Forcipata loca  
BIN URI: BOLD:ACC8165



[Lateral]  
Grypotes puncticollis  
BIN URI: BOLD:ACL2777



[Lateral]  
Orientus ishidae  
BIN URI: BOLD:ABX2622



[Lateral]  
Typhlocyba pomaria  
BIN URI: BOLD:ACP8661



[Lateral]  
Typhlocyba pomaria  
BIN URI: BOLD:AAF5980



[Dorsal]  
Typhlocyba  
BIN URI: BOLD:ACJ7184



[Lateral]  
Psyllidae  
BIN URI: BOLD:ABW7690



[Lateral]  
Aphelinus varipes  
BIN URI: BOLD:ABW3282



[Lateral]  
Aphelinidae  
BIN URI: BOLD:ABA5901



[Lateral]  
Aphidius  
BIN URI: BOLD:ACF4786



[Lateral]  
Dinotrema JFT01  
BIN URI: BOLD:ACE5710



[Lateral]  
Braconidae  
BIN URI: BOLD:ABA6301



[Lateral]  
Hymenoptera  
BIN URI: BOLD:AAU8585



[Lateral]  
Meteorinae  
BIN URI: BOLD:ACP9133



[Lateral]  
Braconidae  
BIN URI: BOLD:AAQ2892



[Lateral]  
Hymenoptera  
BIN URI: BOLD:AAG3199



[Lateral]  
Cynipidae  
BIN URI: BOLD:ABA5904



[Lateral]  
Hymenoptera  
BIN URI: BOLD:AAU8618



[Lateral]  
Hymenoptera  
BIN URI: BOLD:AAZ7203



[Lateral]  
Copidosoma  
BIN URI: BOLD:AAZ0163



[Lateral]  
Hymenoptera  
BIN URI: BOLD:AAZ9201



[Lateral]  
Hymenoptera  
BIN URI: BOLD:AAU8565



[Dorsal]  
Tetrastichinae  
BIN URI: BOLD:ACP8361



[Lateral]  
Tetrastichinae  
BIN URI: BOLD:ACP9071



[Lateral]  
Alloxysta  
BIN URI: BOLD:ACK3704



[Lateral]  
Myrmicinae  
BIN URI: BOLD:ABZ0938



[Lateral]  
Myrmica AF-smi  
BIN URI: BOLD:AAA1840



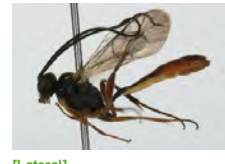
[Lateral]  
Tetramorium caespitum  
BIN URI: BOLD:AAB8259



[Lateral]  
Lasioglossum laevisimum  
BIN URI: BOLD:AAA7513



[Lateral]  
Lasioglossum  
BIN URI: BOLD:AAA3782



[Lateral]  
Cymodusa distincta  
BIN URI: BOLD:ABZ4363



[Lateral]  
Oresbius taeniatus  
BIN URI: BOLD:AAH1683



[Lateral]  
Hymenoptera  
BIN URI: BOLD:AAZ8195



[Lateral]  
Hymenoptera  
BIN URI: BOLD:AAD5194



[Lateral]  
Pimplinae  
BIN URI: BOLD:AAG0387



[Lateral]  
Hymenoptera  
BIN URI: BOLD:AAM7494



[Lateral]  
Hymenoptera  
BIN URI: BOLD:AAP6689



[Lateral]  
Ichneumonidae  
BIN URI: BOLD:AAG7697



[Lateral]  
Cryptinae  
BIN URI: BOLD:ACP8184



[Lateral]  
Ichneumonidae  
BIN URI: BOLD:AAU9311



[Lateral]  
Cryptinae sp. MAS  
BIN URI: BOLD:AAE9438



[Lateral]  
Ichneumonidae  
BIN URI: BOLD:AAW0431



[Lateral]  
Ichneumoninae  
BIN URI: BOLD:AAG7695



[Lateral]  
Exochus  
BIN URI: BOLD:ABV3623



[Lateral]  
Banchinae  
BIN URI: BOLD:AAH1851



[Lateral]  
Megaspilidae  
BIN URI: BOLD:ACP9398



[Lateral]  
Megaspilidae  
BIN URI: BOLD:ACC7176



[Lateral]  
Hymenoptera  
BIN URI: BOLD:ABV2750



[Lateral]  
Anagrus  
BIN URI: BOLD:AAU9004



[Lateral]  
Anagrus  
BIN URI: BOLD:ABZ2703



[Lateral]  
Anaphes



[Lateral]  
Gonatocerus morrilli  
BIN URI: BOLD:AAU9165



[Lateral]  
Amblyaspis  
BIN URI: BOLD:AAU8575



[Dorsal]  
Hymenoptera  
BIN URI: BOLD:ABZ8208



[Lateral]  
Platygasteridae  
BIN URI: BOLD:AAG7883



[Lateral]  
Synopeas  
BIN URI: BOLD:AAU8671



[Lateral]  
Synopeas  
BIN URI: BOLD:ABW3162



[Lateral]  
Synopeas  
BIN URI: BOLD:ABW3265



[Lateral]  
Synopeas  
BIN URI: BOLD:AAG7958



[Lateral]  
Synopeas  
BIN URI: BOLD:AAU8605



[Lateral]  
Synopeas  
BIN URI: BOLD:ACI7205



[Lateral]  
Synopeas  
BIN URI: BOLD:ACP8937



[Lateral]  
Telenomus  
BIN URI: BOLD:AA9192



[Lateral]  
Telenomus  
BIN URI: BOLD:AAU8578



[Lateral]  
Telenomus  
BIN URI: BOLD:AA8098



[Lateral]  
Telenomus  
BIN URI: BOLD:ABW3189



[Lateral]  
Hymenoptera  
BIN URI: BOLD:AAU8566



[Lateral]  
Platygasteridae  
BIN URI: BOLD:AAU8717



[Lateral]  
Platygasteridae  
BIN URI: BOLD:ABV2752



[Lateral]  
Hymenoptera  
BIN URI: BOLD:AAG8271



[Lateral]  
Hymenoptera  
BIN URI: BOLD:AAG7880



[Lateral]  
Platygasteridae  
BIN URI: BOLD:AAU8342



[Lateral]  
Platygasteridae  
BIN URI: BOLD:ACP7995



[Lateral]  
Platygasterinae  
BIN URI: BOLD:ACD3193



[Dorsal]  
Cremastobombicia solidaginis  
BIN URI: BOLD:AAC4262



[Lateral]  
Sympetrum obtusum  
BIN URI: BOLD:AAA5224



[Lateral]  
Melanoplus  
BIN URI: BOLD:ACF0478



[Lateral]  
Psocoptera  
BIN URI: BOLD:AAH3228



[Lateral]  
Psocoptera  
BIN URI: BOLD:AAF1729



[Lateral]  
Psocoptera  
BIN URI: BOLD:ABA6550



[Dorsal]  
Phlaeothripidae  
BIN URI: BOLD:AA8719