

School Malaise Trap Program

Species Image Library

The images of the species collected in your Malaise trap are shown below. A single representative for each species was selected to be photographed; in some cases, only a damaged specimen was available.

Re-render images: per row

300 Records Per Page - Pages: 1



[Dorsal]
Cheiracanthium mildei
BIN URI: BOLD:AAB7601



[Dorsal]
Philodromus rufus vibrans
BIN URI: BOLD:AAB2768



[Dorsal]
Parasteatoda tepidariorum
BIN URI: BOLD:AAC0175



[Dorsal]
Oribatulidae
BIN URI: BOLD:AAL8123



[Dorsal]
Anystidae
BIN URI: BOLD:ACC2025



[Dorsal]
Anystidae
BIN URI: BOLD:ACP7674



[Dorsal]
Anystidae
BIN URI: BOLD:ABW5662



[Lateral]
Abrolophus
BIN URI: BOLD:ACI9840



[Lateral]
Collembola
BIN URI: BOLD:ACC0359



[Dorsal]
Bourletellidae
BIN URI: BOLD:ACP9010



[Dorsal]
Epitrix cucumeris
BIN URI: BOLD:ABA9101



[Dorsal]
Orthoperus scutellaris
BIN URI: BOLD:AAU7040



[Dorsal]
Coleoptera
BIN URI: BOLD:ABA9097



[Lateral]
Curculionidae
BIN URI: BOLD:AAM7726



[Dorsal]
Corticaria
BIN URI: BOLD:ABA9093



[Dorsal]
Corticina
BIN URI: BOLD:AAH0256



[Dorsal]
Trixagus
BIN URI: BOLD:AAU6966



[Lateral]
Pollenia labialis
BIN URI: BOLD:AAI2765



[Lateral]
Aphidoletes aphidimyza
BIN URI: BOLD:AAF7193



[Lateral]
Cecidomyiidae
BIN URI: BOLD:AAP5342



[Dorsal]
Cecidomyiidae
BIN URI: BOLD:AAP9022



[Lateral]
Cecidomyiidae
BIN URI: BOLD:AAH3661



[Lateral]
Cecidomyiidae
BIN URI: BOLD:AAV5689



[Lateral]
Cecidomyiidae
BIN URI: BOLD:ACJ6954



[Lateral]
Dicrotendipes tritonus
BIN URI: BOLD:AAC0706



[Lateral]
Parachironomus
BIN URI: BOLD:ACE5981



[Lateral]
Paraphaenocladus impensus
BIN URI: BOLD:AAC4197



[Lateral]
Paratanytarsus sp. 7TE
BIN URI: BOLD:ACM2401



[Lateral]
Paratanytarsus sp. 7TE
BIN URI: BOLD:AAP2907



[Lateral]
Paratanytarsus
BIN URI: BOLD:ACE7452



[Lateral]
Paratanytarsus
BIN URI: BOLD:ACM0997



[Lateral]
Tanytarsus
BIN URI: BOLD:ACD0612



[Lateral]
Tanytarsus
BIN URI: BOLD:ACP8262



[Lateral]
Tanytarsus guerius
BIN URI: BOLD:AAC4525



[Lateral]
Tanytarsus
BIN URI: BOLD:AAG5467



[Lateral]
Chironomidae
BIN URI: BOLD:ACC4669



[Dorsal]
Chironomidae
BIN URI: BOLD:AAP3767



[Lateral]
Chironomidae
BIN URI: BOLD:ACB1854



[Lateral]
Chironomidae
BIN URI: BOLD:AAG5463



[Lateral]
Chironomidae
BIN URI: BOLD:AAN5391



[Lateral]
Chironomidae
BIN URI: BOLD:ABV1188



[Lateral]
Chironomidae
BIN URI: BOLD:AAL7356



[Lateral]
Chironomidae
BIN URI: BOLD:ACC1609



[Lateral]
Chironomidae
BIN URI: BOLD:AAL7343



[Lateral]
Chironomidae
BIN URI: BOLD:ACP9310



[Lateral]
Chironomidae
BIN URI: BOLD:AAF0554



[Dorsal]
Chironomidae
BIN URI: BOLD:AAN5348



[Lateral]
Dolichopodidae
BIN URI: BOLD:AAG9713



[Lateral]
Muscidae
BIN URI: BOLD:AAG1769



[Lateral]
Cordyla
BIN URI: BOLD:ABV9015



[Lateral]
Psychodidae
BIN URI: BOLD:ABV1314



[Lateral]
Psychodidae
BIN URI: BOLD:AAZ5592



[Lateral]
Diptera
BIN URI: BOLD:AAG6743



[Lateral]
Bradysia difformis
BIN URI: BOLD:AAV1295



[Lateral]
Sciaridae
BIN URI: BOLD:AAH3939



[Lateral]
Sciaridae
BIN URI: BOLD:AAV6412



[Lateral]
Sciaridae
BIN URI: BOLD:ABU5521



[Lateral]
Sciaridae
BIN URI: BOLD:ABY0363



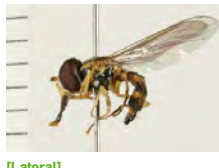
[Lateral]
Sciaridae
BIN URI: BOLD:ACG9863



[Lateral]
Sciaridae
BIN URI: BOLD:AAN6770



[Lateral]
Sciaridae
BIN URI: BOLD:AAN6447



[Lateral]
Toxomerus geminatus
BIN URI: BOLD:AAC1312



[Lateral]
Acanalonia conica
BIN URI: BOLD:AAJ5015



[Lateral]
Aleyrodidae
BIN URI: BOLD:AAZ8501



[Lateral]
Aphis glycines
BIN URI: BOLD:AAB7938



[Lateral]
Aphrophora alni
BIN URI: BOLD:AAZ2091



[Lateral]
Empoasca
BIN URI: BOLD:ABZ4247



[Lateral]
Empoasca
BIN URI: BOLD:AAN8250



[Lateral]
Fieberiella florii
BIN URI: BOLD:ACJ7053



[Lateral]
Jikradia olitoria
BIN URI: BOLD:ABA5861



[Lateral]
Orientus ishidae
BIN URI: BOLD:ABX2622



[Lateral]
Typhlocyba pomaria
BIN URI: BOLD:AAF5980



[Lateral]
Bethyilidae
BIN URI: BOLD:AAU8628



[Lateral]
Asobara sp.
BIN URI: BOLD:ABZ3773



[Lateral]
Hymenoptera
BIN URI: BOLD:ABA1079



[Lateral]
Diapriidae
BIN URI: BOLD:AAM7500



[Lateral]
Hymenoptera
BIN URI: BOLD:AAM7487



[Dorsal]
Encyrtidae
BIN URI: BOLD:ACP9438



[Dorsal]
Tetrastichinae
BIN URI: BOLD:ACP8150



[Lateral]
Camponotus pennsylvanicus
BIN URI: BOLD:AAA9461



[Lateral]
Lasius
BIN URI: BOLD:AAB9126



[Lateral]
Hymenoptera
BIN URI: BOLD:AAC2392



[Lateral]
Cymodusa distincta
BIN URI: BOLD:ABZ4363



[Lateral]
Hymenoptera
BIN URI: BOLD:AAP6689



[Lateral]
Megaspilidae
BIN URI: BOLD:ACJ1417



[Dorsal]
Polynema
BIN URI: BOLD:ABA5900



[Lateral]
Myrmaridae
BIN URI: BOLD:ABW3187



[Lateral]
Telenomus
BIN URI: BOLD:AAM7440



[Lateral]
Telenomus
BIN URI: BOLD:AAJ9192



[Lateral]
Telenomus
BIN URI: BOLD:AAU8578



[Lateral]
Platygasteridae
BIN URI: BOLD:AAU8342



[Lateral]
Scelioninae
BIN URI: BOLD:ACK8395



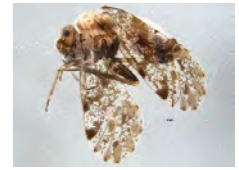
[Lateral]
Vespa germanica
BIN URI: BOLD:AAG9055



[Lateral]
Psocoptera
BIN URI: BOLD:AAN8447



[Lateral]
Psocoptera
BIN URI: BOLD:ACA2933



[Lateral]
Psocoptera
BIN URI: BOLD:ACE6318



[Dorsal]
Phlaeothripidae
BIN URI: BOLD:ACJ2048