

School Malaise Trap Program

Species Image Library

The images of the species collected in your Malaise trap are shown below. A single representative for each species was selected to be photographed; in some cases, only a damaged specimen was available.

Re-render images: per row

300 Records Per Page - Pages: 1



[Dorsal]
Cheiracanthium mildei
BIN URI: BOLD:AAB7601



[Dorsal]
Tennesseellum formica
BIN URI: BOLD:AAG5631



[Dorsal]
Philodromus keyserlingi
BIN URI: BOLD:AAI2836



[Dorsal]
Parasitidae
BIN URI: BOLD:AAF9285



[Dorsal]
Lebertiidae
BIN URI: BOLD:ACG5337



[Dorsal]
Pionidae
BIN URI: BOLD:ACC2368

IMAGE NOT AVAILABLE

Trombidiformes
BIN URI: BOLD:ACP8548



[Dorsal]
Anthicus cervinus
BIN URI: BOLD:AAH2753



[Dorsal]
Sitona hispidulus
BIN URI: BOLD:AAH0130



[Dorsal]
Corticarina
BIN URI: BOLD:AAH0256



[Lateral]
Mordellina ancilla
BIN URI: BOLD:AAV6534



[Lateral]
Stilbus apicalis
BIN URI: BOLD:AAH0134



[Dorsal]
Trixagus carnicollis
BIN URI: BOLD:AAN6148



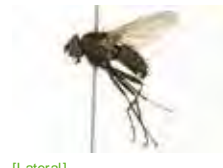
[Dorsal]
Forficula auricularia-A
BIN URI: BOLD:AAG9897



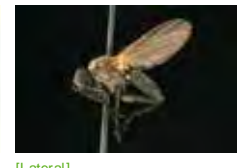
[Lateral]
Agromyzidae
BIN URI: BOLD:AAD1945



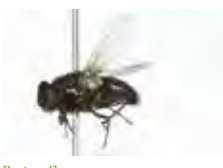
[Lateral]
Delia platyura
BIN URI: BOLD:AAG2511



[Lateral]
Anthomyiidae
BIN URI: BOLD:AAG2460



[Lateral]
Diptera
BIN URI: BOLD:AAG2462



[Lateral]
Phormia regina
BIN URI: BOLD:AAB9140



[Lateral]
Cecidomyiidae
BIN URI: BOLD:ACF7633



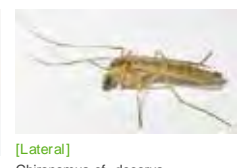
[Lateral]
Cecidomyiidae
BIN URI: BOLD:AAV5796



[Lateral]
Cecidomyiidae
BIN URI: BOLD:ABA0863



[Lateral]
Cecidomyiidae
BIN URI: BOLD:AAN5226



[Lateral]
Chironomus cf. decorus
BIN URI: BOLD:AAB7030



[Lateral]
Tanypodinae
BIN URI: BOLD:ACK6104



[Lateral]
Cricotopus
BIN URI: BOLD:AAN5318



[Lateral]
Dicrotendipes
BIN URI: BOLD:ABV9027



[Lateral]
Micropsectra subletteorum
BIN URI: BOLD:AAF7088



[Dorsal]
Paracladopelma winnelli
BIN URI: BOLD:AAK4963



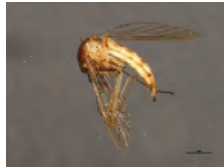
[Lateral]
Tanytarsus guerlus
BIN URI: BOLD:AAC4525



[Lateral]
Chironomidae
BIN URI: BOLD:ACC4669



[Lateral]
Chironomidae
BIN URI: BOLD:AA5342



[Lateral]
Aedes vexans
BIN URI: BOLD:AAA7067



[Lateral]
Dolichopus
BIN URI: BOLD:AAG9652



[Lateral]
Dolichopodidae
BIN URI: BOLD:AAM6780



[Lateral]
Drosophila falleni
BIN URI: BOLD:AAB7507



[Lateral]
Platypalpus
BIN URI: BOLD:AA5504



[Lateral]
Tipulidae
BIN URI: BOLD:ABV1401



[Lateral]
Geranomyza
BIN URI: BOLD:AAG7012



[Lateral]
Limoniidae
BIN URI: BOLD:AA03939



[Lateral]
Lonchoptera
BIN URI: BOLD:AAG9974



[Lateral]
Helina sp.
BIN URI: BOLD:AAC2498



[Lateral]
Muscidae
BIN URI: BOLD:AAG1717



[Lateral]
Muscina pascuorum
BIN URI: BOLD:AAG1714



[Lateral]
Schoenomyza
BIN URI: BOLD:AAG4622



[Lateral]
Phoridae
BIN URI: BOLD:AAG3236



[Lateral]
Phoridae
BIN URI: BOLD:ABU5529



[Lateral]
Phoridae
BIN URI: BOLD:AAU6533



[Lateral]
Psychodidae
BIN URI: BOLD:AAF306



[Lateral]
Sciaridae
BIN URI: BOLD:AAH3914



[Lateral]
Sciaridae
BIN URI: BOLD:ABA6407



[Lateral]
Sciaridae
BIN URI: BOLD:AAH6447



[Lateral]
Sciaridae
BIN URI: BOLD:AAH3947



[Lateral]
Microchrysa polita
BIN URI: BOLD:AAH6506



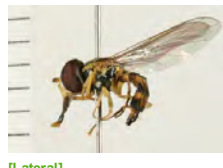
[Lateral]
Syrphidae
BIN URI: BOLD:AAB2384



[Lateral]
Platycheirus immarginatus
BIN URI: BOLD:AAA9506



[Lateral]
Sphaerophoria
BIN URI: BOLD:AAA7374



[Lateral]
Toxomerus geminatus
BIN URI: BOLD:AAC1312



[Lateral]
Nephrotoma ferruginea
BIN URI: BOLD:ABX6186



[Lateral]
Tipula paludosa
BIN URI: BOLD:AAE7386



[Lateral]
Aphis glycines
BIN URI: BOLD:AAB7938



[Dorsal]
Rhopalosiphum padi
BIN URI: BOLD:AAA9899



[Dorsal]
Hemiptera
BIN URI: BOLD:AAG3896



[Lateral]
Balciutha neglecta
BIN URI: BOLD:AAD4769



[Lateral]
Empoasca luda
BIN URI: BOLD:ACN9975



[Lateral]
Macrosteles quadrilineatus
BIN URI: BOLD:AAA9422



[Lateral]
Typhlocyba
BIN URI: BOLD:ABA5828



[Lateral]
Hemiptera
BIN URI: BOLD:AAO4031



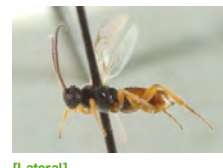
[Dorsal]
Phytocoris diversus
BIN URI: BOLD:ABA5790



[Lateral]
Nabis americanus
BIN URI: BOLD:AAB8143



[Lateral]
Aleiodes
BIN URI: BOLD:AAH8775



[Lateral]
Cotesia crambi
BIN URI: BOLD:AAH1026



[Lateral]
Hymenoptera
BIN URI: BOLD:AAU8585



[Lateral]
Hymenoptera
BIN URI: BOLD:AAG1429



[Lateral]
Rogadinae
BIN URI: BOLD:ACP9106



[Lateral]
Diapriidae
BIN URI: BOLD:AAU8449



[Lateral]
Hymenoptera
BIN URI: BOLD:ABV2734



[Lateral]
Eulophidae
BIN URI: BOLD:AAU8577



[Lateral]
Formica
BIN URI: BOLD:AAE0406



[Lateral]
Lasius
BIN URI: BOLD:AAB9126



[Lateral]
Lasius
BIN URI: BOLD:ABY9254



[Lateral]
Cymodusa distincta
BIN URI: BOLD:ABZ4363



[Lateral]
Hymenoptera
BIN URI: BOLD:AAD4214



[Lateral]
Lissonota coracina
BIN URI: BOLD:AAG7794



[Lateral]
Hymenoptera
BIN URI: BOLD:AAG7721



[Adult]
Promethes sulcator
BIN URI: BOLD:AAG0369



[Lateral]
Banchinae
BIN URI: BOLD:AAH1851



[Lateral]
Ichneumoninae
BIN URI: BOLD:AAG7695



[Lateral]
Myrmidae
BIN URI: BOLD:ACE1230



[Lateral]
Hymenoptera
BIN URI: BOLD:ABX2601



[Lateral]
Telenomus
BIN URI: BOLD:ACP9092



[Lateral]
Trimorus
BIN URI: BOLD:AAU9229



[Lateral]
Platygastriidae
BIN URI: BOLD:AAU8342



[Lateral]
Vespa germanica
BIN URI: BOLD:AAG9055



[Dorsal]
Udea rubigalis
BIN URI: BOLD:AAA4507



[Dorsal]
Epermenia albapunctella
BIN URI: BOLD:AAF0142



[Dorsal]
Syncopacma
BIN URI: BOLD:AAF9988



[Lateral]
Lacinipolia renigera
BIN URI: BOLD:ACE7010



[Lateral]
Nephelodes minians
BIN URI: BOLD:AAA5081



[Dorsal]
Peridroma saucia
BIN URI: BOLD:AAA6377



[Lateral]
Sunira bicolorago
BIN URI: BOLD:AAA4426



[Lateral]
Chrysopa oculata
BIN URI: BOLD:AAG2017



[Lateral]
Hemerobius humulinus
BIN URI: BOLD:AAG0892



[Lateral]
Micromus posticus
BIN URI: BOLD:AAG0906



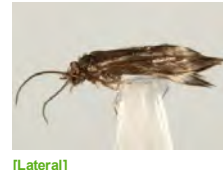
[Lateral]
Psocoptera
BIN URI: BOLD:AAH8447



[Lateral]
Psocoptera
BIN URI: BOLD:AAF1729



[Lateral]
Psocoptera
BIN URI: BOLD:ACP9371



[Lateral]
Hydroptila consimilis
BIN URI: BOLD:ABX5069



[Lateral]
Limnephilus submonilifer
BIN URI: BOLD:AAA3080

