

School Malaise Trap Program

Species Image Library

The images of the species collected in your Malaise trap are shown below. A single representative from each species was selected to be photographed; in some cases, only a damaged specimen was available.



[dorsolateral]
Cheiracanthium
BIN URI: BOLD:AAB7601



[Dorsal]
Philodromus rufus vibrans
BIN URI: BOLD:AAB2768



[dorsolateral view]
Salticus scenicus
BIN URI: BOLD:AAC9044



[Lateral]
Entomobrya nivalis
BIN URI: BOLD:AAA8924



[Lateral]
Collembola
BIN URI: BOLD:AAB8452



[Lateral]
Longitarsus scutellaris
BIN URI: BOLD:AAN6151



[Dorsal]
Coccinellidae
BIN URI: BOLD:AAB5640



[Dorsal]
Propylaea quatuordecimpunctata
BIN URI: BOLD:AAF6935



[Lateral]
Sitona hispidulus
BIN URI: BOLD:AAH0130



[Dorsal]
Aeolus
BIN URI: BOLD:ACP9027



[Dorsal]
Erotylidae
BIN URI: BOLD:ABA6320



[Dorsal]
Melanophthalma inermis
BIN URI: BOLD:AAN6154



[Dorsal]
Latridius minutus
BIN URI: BOLD:AAO3898



[Dorsal]
Melanophthalma
BIN URI: BOLD:AAP7026



[Dorsal]
Stilbus apicalis
BIN URI: BOLD:AAH0134



[Dorsal]
Philonthus jurgans
BIN URI: BOLD:AAU7311



[Dorsal]
Philonthus spiniformis
BIN URI: BOLD:AAN6185



[Lateral]
Cerodontha muscina
BIN URI: BOLD:AAF1051



[Lateral]
Anthomyiidae
BIN URI: BOLD:AAG2462



[Lateral]
Anthomyiidae
BIN URI: BOLD:AAG2460



[Lateral]
Pollenia pediculata
BIN URI: BOLD:AAG6745



[Lateral]
Cecidomyiidae
BIN URI: BOLD:ACF0765



[Lateral]
Forcipomyia bipunctata
BIN URI: BOLD:AAN5148



[Lateral]
Ablabesmyia americana
BIN URI: BOLD:AAC8567



[Lateral]
Chironomus
BIN URI: BOLD:AAB7030



[Dorsal]
Paracladopelma winnelli
BIN URI: BOLD:AAK4963



[Lateral]
Paraphaenocladus impensus
BIN URI: BOLD:AAC4197



[Lateral]
Tanytarsus
BIN URI: BOLD:AAG5467



[Lateral]
Chironomidae
BIN URI: BOLD:AAN5342



[Lateral]
Dolichopodidae
BIN URI: BOLD:AAG9713



[Lateral]
Heleomyzidae
BIN URI: BOLD:AAE1978



[Lateral]
Coenosia tigrina
BIN URI: BOLD:AAB5609



[Lateral]
Helina depuncta
BIN URI: BOLD:AAG1711



[Lateral]
Helina evecta
BIN URI: BOLD:AAC2498



[Lateral]
Phoridae
BIN URI: BOLD:AAG3236



[Lateral]
Phoridae
BIN URI: BOLD:AAG3248



[Lateral]
Phoridae
BIN URI: BOLD:ACX6055



[Lateral]
Megaloptera
BIN URI: BOLD:AAG3266



[Lateral]
Platystomatidae
BIN URI: BOLD:AAP8739



[Lateral]
Psychodidae
BIN URI: BOLD:AAN8770



[Lateral]
Sarcophagidae
BIN URI: BOLD:AAG6756



[Lateral]
Diptera
BIN URI: BOLD:AAG6743



[Lateral]
Sciaridae
BIN URI: BOLD:ABA0929



[Lateral]
Bradysia
BIN URI: BOLD:AAV1295



[Lateral]
Sciaridae
BIN URI: BOLD:AAM9242



[Lateral]
Sciaridae
BIN URI: BOLD:AAN6447



[Lateral]
Sciaridae
BIN URI: BOLD:AAN6433



[Lateral]
Cratyna ambigua
BIN URI: BOLD:AAH3968



[Lateral]
Lycoriella
BIN URI: BOLD:ABA1215



[Lateral]
Sciaridae
BIN URI: BOLD:ABU5521



[Lateral]
Sciaridae
BIN URI: BOLD:AAN6445



[Lateral]
Sciaridae
BIN URI: BOLD:AAU6614



[Lateral]
Sciaridae
BIN URI: BOLD:ABU5520



[Lateral]
Sciaridae
BIN URI: BOLD:ABW5541



[Lateral]
Sphaeroceridae
BIN URI: BOLD:ABV1178



[Lateral]
Microchrysa polita
BIN URI: BOLD:AAN6506



[Lateral]
Sphaerophoria
BIN URI: BOLD:AAA7374



[Lateral]
Aleyrodidae
BIN URI: BOLD:AAZ8500



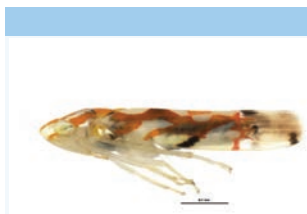
[Dorsal]
Erythrídula wysongi
BIN URI: BOLD:ACX8858



[Lateral]
Erythroneura bakeri
BIN URI: BOLD:AAV0161



[Lateral]
Erythroneura elegans
BIN URI: BOLD:ABA8106



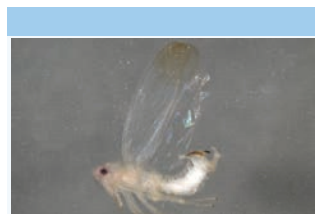
[Lateral]
Erythroneura vitifex
BIN URI: BOLD:AAV6742



[Lateral]
Erythroneura vitifex
BIN URI: BOLD:ACQ8506



[Lateral]
Typhlocyba pomaria
BIN URI: BOLD:AAF5980



[Lateral]
Typhlocyba pomaria
BIN URI: BOLD:ACP8661



[Lateral]
Typhlocyba
BIN URI: BOLD:ABA5828



[Dorsal]
Delphacidae
BIN URI: BOLD:ACX8430



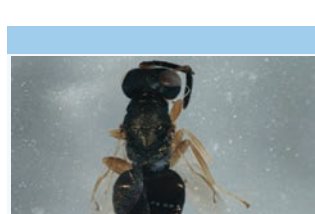
[Lateral]
Halticus bractatus
BIN URI: BOLD:AAI6908



[Dorsal]
Lygus lineolaris
BIN URI: BOLD:AAA5803



[Lateral]
Aphelinus
BIN URI: BOLD:ABW3282



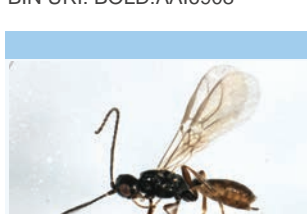
[Dorsal]
Aphelinidae
BIN URI: BOLD:ACF8608



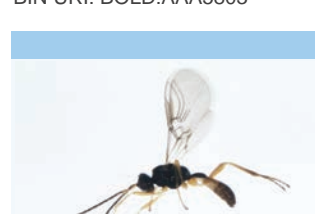
[Lateral]
Centrodora
BIN URI: BOLD:AAZ5700



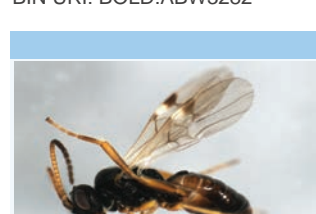
[Lateral]
Trioxyx pallidus
BIN URI: BOLD:ABA8091



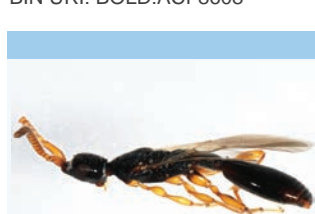
[Lateral]
Alysiinae
BIN URI: BOLD:AAN8138



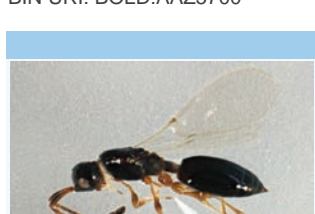
[Lateral]
Alysiinae
BIN URI: BOLD:AAU8209



[Lateral]
Microplitis kewleyi
BIN URI: BOLD:AAB8493



[Lateral]
Hymenoptera
BIN URI: BOLD:AAU8736



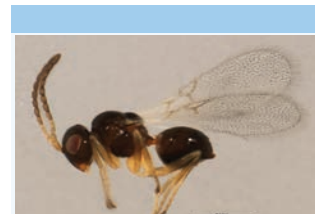
[Lateral]
Diapriidae
BIN URI: BOLD:AAG7899



[Lateral]
Diapriidae
BIN URI: BOLD:AAU8712



[Lateral]
Tetrastichinae
BIN URI: BOLD:ABX2584



[Lateral]
Charipinae
BIN URI: BOLD:AAU8573



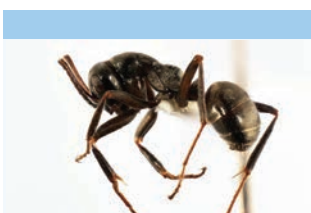
[Lateral]
Charipinae
BIN URI: BOLD:ACX7940



[Lateral]
Eucoilinae
BIN URI: BOLD:ABA5904



[Lateral]
Eucoilinae
BIN URI: BOLD:AAP6708



[Lateral]
Formica glacialis



[Lateral]
Lasius neoniger



[Lateral]
Myrmica americana



[Lateral]
Myrmica detritinodis



[Lateral]
Hymenoptera



[Lateral]
Campoletis flavicincta

BIN URI: BOLD:AAA1468



[Lateral]
Cymodusa distincta
BIN URI: BOLD:ABZ4363

BIN URI: BOLD:AAB9126



[Lateral]
Woldstedtius
BIN URI: BOLD:AAH0524

BIN URI: BOLD:AAA1839



[Lateral]
Cryptinae
BIN URI: BOLD:AAW0431

BIN URI: BOLD:AAA1841



[Lateral]
Homotropus signatus
BIN URI: BOLD:AAH2172

BIN URI: BOLD:AAG7647



[Lateral]
Mymaridae
BIN URI: BOLD:ACK1874

BIN URI: BOLD:AAZ8146



[Lateral]
Mymaridae
BIN URI: BOLD:ABA6051



[Lateral]
Synopeas
BIN URI: BOLD:ACP8937



[Lateral]
Platygastridae
BIN URI: BOLD:AAU9340



[Lateral]
Platygastridae
BIN URI: BOLD:ACX9045



[Lateral]
Platygastridae
BIN URI: BOLD:ACJ7394



[Lateral]
Leptacis
BIN URI: BOLD:AAG7883



[Lateral]
Ametastegia pallipes
BIN URI: BOLD:AAE5602



[Dorsal]
Bucculatrix pomifoliella
BIN URI: BOLD:AAD2085



[Dorsal]
Scoparia basalis-cineromedia
BIN URI: BOLD:AAC3633



[Dorsal]
Agonopterix thelmae
BIN URI: BOLD:AAF7182



[Dorsal]
Idia aemula
BIN URI: BOLD:AAA2229



[Lateral]
Micromus posticus
BIN URI: BOLD:AAG0906



[Lateral]
Micromus subanticus
BIN URI: BOLD:AAG0893



[Dorsal]
Psocoptera
BIN URI: BOLD:AAH3229



[Lateral]
Valenzuela flavidus
BIN URI: BOLD:AAN8447



[Lateral]
Valenzuela flavidus
BIN URI: BOLD:AAH3228



[Lateral]
Valenzuela
BIN URI: BOLD:AAM8930



[Lateral]
Peripsocus subfasciatus
BIN URI: BOLD:AAN8450