

School Malaise Trap Program

Species Image Library

The images of the species collected in your Malaise trap are shown below. A single representative from each species was selected to be photographed; in some cases, only a damaged specimen was available.



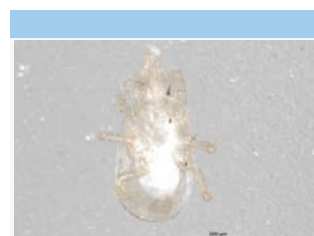
[Dorsal]
Erigone aletris
BIN URI: BOLD:AAD1746



[Lateral]
Tetragnatha laboriosa
BIN URI: BOLD:AAA6381



[Ventral]
Ascidae
BIN URI: BOLD:ABW2698



[Ventral]
Ascidae
BIN URI: BOLD:ABA5555



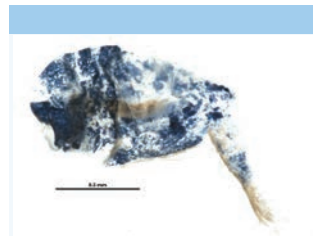
[Dorsal]
Ascidae
BIN URI: BOLD:ACF8020



[Lateral]
Entomobrya nivalis
BIN URI: BOLD:AAA8924



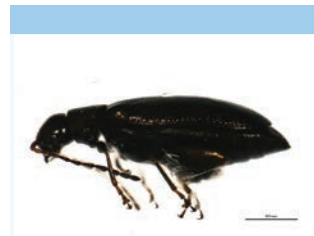
[Lateral]
Lepidocyrtus cyaneus
BIN URI: BOLD:AAA8817



[Lateral]
Entomobryidae
BIN URI: BOLD:ACU5969



[Dorsal]
Phyllotreta albionica
BIN URI: BOLD:AAH0255



[Lateral]
Phyllotreta
BIN URI: BOLD:AAN5901



[Dorsal]
Psylliodes cucullatus
BIN URI: BOLD:ABX3225



[Dorsal]
Coccinella septempunctata
BIN URI: BOLD:AAA8933



[Dorsal]
Pactopus hornii
BIN URI: BOLD:ACC3034



[Lateral]
Liriomyza
BIN URI: BOLD:ACR8905



[Dorsal]
Delia platura
BIN URI: BOLD:AAA3453



[Lateral]
Anthomyiidae
BIN URI: BOLD:AAG2451



[Lateral]
Pegomya
BIN URI: BOLD:ACB9867



[Lateral]
Anthomyiidae
BIN URI: BOLD:AAG2453



[Lateral]
Bibionidae
BIN URI: BOLD:ABV0350



[Lateral]
Cecidomyiidae
BIN URI: BOLD:ACP9347



[Lateral]
Cecidomyiidae
BIN URI: BOLD:ACP9720



[Lateral]
Cecidomyiidae
BIN URI: BOLD:AAP9039



[Lateral]
Cecidomyiidae
BIN URI: BOLD:ACI3460



[Lateral]
Cecidomyiidae
BIN URI: BOLD:ACF0670



[Lateral]
Ceratopogonidae
BIN URI: BOLD:AAN5169



[Lateral]
Cricotopus
BIN URI: BOLD:AAP5922



[Lateral]
Orthocladius
BIN URI: BOLD:ACD1879



[Lateral]
Orthocladius
BIN URI: BOLD:ACG3299



[Lateral]
Orthocladius
BIN URI: BOLD:ACL0132



[Dorsal]
Chironomidae
BIN URI: BOLD:AAN8989



[Lateral]
Tanytarsus
BIN URI: BOLD:ACC1723



[Lateral]
Cricotopus
BIN URI: BOLD:ACH0948



[Lateral]
Chironomidae
BIN URI: BOLD:ACX8236



[Lateral]
Tanytarsus
BIN URI: BOLD:ACB8144



[Lateral]
Tanypodinae
BIN URI: BOLD:ACC5968



[Lateral]
Biorbitella hesperia
BIN URI: BOLD:AAV6118



[Lateral]
Elachiptera
BIN URI: BOLD:AAH4208



[Lateral]
Culicidae
BIN URI: BOLD:AAC9132



[Lateral]
Drosophila
BIN URI: BOLD:AAG8495



[Lateral]
Drosophilidae
BIN URI: BOLD:AAN5544



[Lateral]
Lauxaniidae
BIN URI: BOLD:AAP6482



[Lateral]
Coenosia pilosissima
BIN URI: BOLD:AAP6478



[Lateral]
Helina evecta
BIN URI: BOLD:AAC2498



[Lateral]
Phoridae
BIN URI: BOLD:AAG3236



[Lateral]
Phoridae
BIN URI: BOLD:AAL9075



[Lateral]
Phoridae
BIN URI: BOLD:ABY1912



[Dorsal]
Chalarus
BIN URI: BOLD:ACX5340



[Lateral]
Eudorylas sp. CA. 13
BIN URI: BOLD:AAE8760



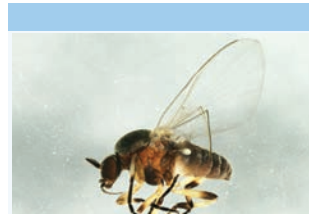
[Lateral]
Lycoriella
BIN URI: BOLD:AAL7869



[Lateral]
Scatopsiara atomaria
BIN URI: BOLD:AAH3920



[Lateral]
Scatopsiara
BIN URI: BOLD:AAN6431



[Lateral]
Simuliidae
BIN URI: BOLD:AAB1114



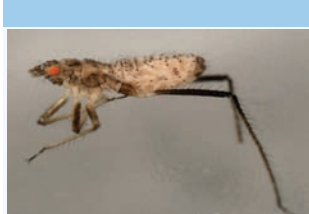
[Lateral]
Callipterinella
BIN URI: BOLD:ACB2802



[Lateral]
Capitophorus elaeagni
BIN URI: BOLD:AAE3015



[Dorsal]
Chaitophorus neglectus
BIN URI: BOLD:AAB4394



[Lateral]
Eulachnus rileyi
BIN URI: BOLD:AAC6347



[Dorsal]
Amblysellus dorsti
BIN URI: BOLD:ACD9105



[Dorsal]
Hemiptera
BIN URI: BOLD:AAO8340



[Dorsal]
Dikraneura
BIN URI: BOLD:ACX8287



[Lateral]
Dikraneura
BIN URI: BOLD:AAV0227



[Lateral]
Psammotettix nesiotus
BIN URI: BOLD:AAG8681



[Lateral]
Typhlocyba pomaria
BIN URI: BOLD:AAF5980



[Lateral]
Cicadellidae
BIN URI: BOLD:ACX7983



[Lateral]
Typhlocyba
BIN URI: BOLD:ABA5828



[Lateral]
Nysius groenlandicus
BIN URI: BOLD:ACE3366



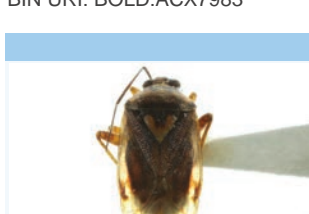
[Dorsal]
Lygus lineolaris
BIN URI: BOLD:AAA5803



[Dorsal]
Psallovius piceicola
BIN URI: BOLD:AAC4309



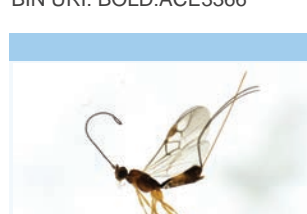
[Lateral]
Nabis
BIN URI: BOLD:AAB8143



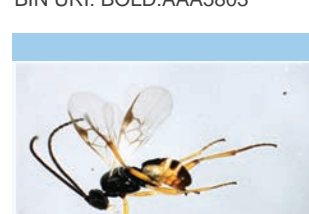
[Dorsal]
Lygus
BIN URI: BOLD:ABZ1405



[Lateral]
Aphidius
BIN URI: BOLD:ACL9208



[Lateral]
Charmon
BIN URI: BOLD:AAG1359



[Lateral]
Cotesia jft06
BIN URI: BOLD:AAA8055



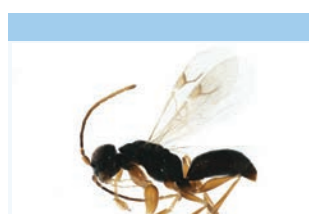
[Lateral]
Macrocentrus
BIN URI: BOLD:ACN9016



[Lateral]
Alysiinae
BIN URI: BOLD:ACP9711



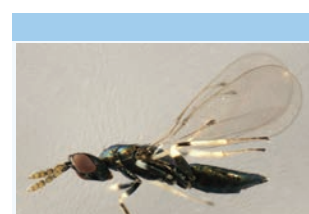
[Lateral]
Hymenoptera
BIN URI: BOLD:AAU8736



[Lateral]
Dryinidae
BIN URI: BOLD:AAN7579



[Dorsal]
Encyrtidae
BIN URI: BOLD:ACP9621



[Lateral]
Eulophidae
BIN URI: BOLD:AAU9084



[Lateral]
Charipinae
BIN URI: BOLD:ACT3397



[Lateral]
Eucoilinae
BIN URI: BOLD:ABA7960



[Lateral]
Formica
BIN URI: BOLD:AAA4977



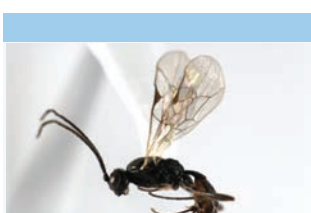
[Lateral]
Lasius
BIN URI: BOLD:AAN5587



[Lateral]
Ichneumonidae
BIN URI: BOLD:AAN7721



[Lateral]
Exetastes
BIN URI: BOLD:ACG2110



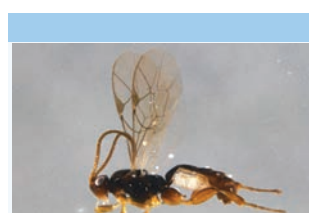
[Lateral]
Gelis



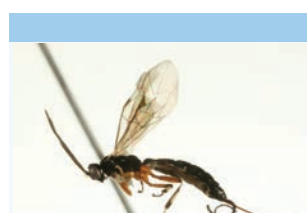
[Lateral]
Megastylus



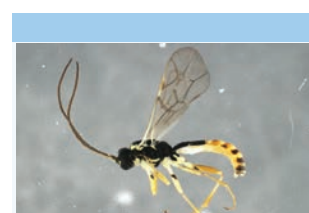
[Lateral]
Hymenoptera



[Lateral]
Orthocentrus



[Lateral]
Scambus jft01



[Lateral]
Syrphoctonus

BIN URI: BOLD:AAA6277



[Lateral]
Campopleginae
BIN URI: BOLD:AAH7726

BIN URI: BOLD:ACE4233



[Lateral]
Diadegma
BIN URI: BOLD:AAB8765

BIN URI: BOLD:AAU8218



[Lateral]
Ichneumoninae
BIN URI: BOLD:AAH2004

BIN URI: BOLD:ACM2706



[Lateral]
Ichneumoninae
BIN URI: BOLD:AAH1919

BIN URI: BOLD:ACE6645



[Lateral]
Platygastriidae
BIN URI: BOLD:ACC5761

BIN URI: BOLD:ACG6542



[Lateral]
Pteromalidae
BIN URI: BOLD:AAG8348



[Lateral]
Pteromalidae
BIN URI: BOLD:ABZ9561



[Lateral]
Pteromalidae
BIN URI: BOLD:ACX8672



[Lateral]
Torymidae
BIN URI: BOLD:AAG4353



[Dorsal]
Chionodes obscurusella
BIN URI: BOLD:AAA4439



[Dorsal]
Chionodes thoraceochrella
BIN URI: BOLD:AAH4677



[Dorsal]
Plutella xylostella
BIN URI: BOLD:AAA1513