

School Malaise Trap Program

Species Image Library

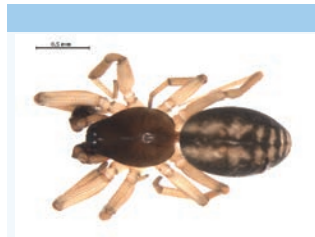
The images of the species collected in your Malaise trap are shown below. A single representative from each species was selected to be photographed; in some cases, only a damaged specimen was available.



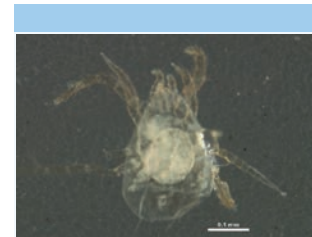
[Dorsal]
Clubiona obesa
BIN URI: BOLD:AAD5417



[dorsolateral]
Cheiracanthium
BIN URI: BOLD:AAB7601



[Dorsal]
Grammonota gentilis
BIN URI: BOLD:AAA9476



[Dorsal]
Phytoseiidae
BIN URI: BOLD:ACJ4882



[Dorsal]
Phytoseiidae
BIN URI: BOLD:ACF8410



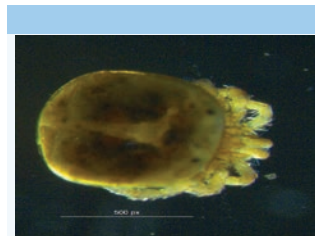
[Dorsal]
Anystidae
BIN URI: BOLD:AAM7961



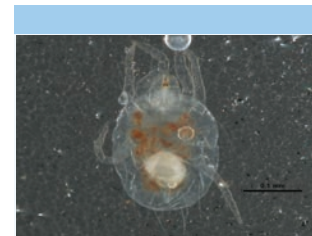
[Dorsal]
Anystidae
BIN URI: BOLD:AAN6612



[Dorsal]
Anystidae
BIN URI: BOLD:ACP8731



[Dorsal]
Lebertia
BIN URI: BOLD:ACH3843



[Dorsal]
Tetranychidae
BIN URI: BOLD:ACM3586



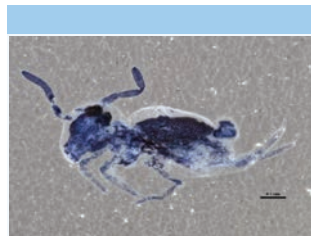
[Lateral]
Entomobrya atrocincta
BIN URI: BOLD:ACE5102



[Lateral]
Lepidocyrtus
BIN URI: BOLD:ACM2009



[Lateral]
Entomobrya
BIN URI: BOLD:AAA4664



[Lateral]
Bourletiella
BIN URI: BOLD:ABX0027



[Dorsal]
Corticarina
BIN URI: BOLD:AAH0256



[Dorsal]
Tachyporus nitidulus
BIN URI: BOLD:ABA9096



[Dorsal]
Staphylinidae
BIN URI: BOLD:ACF4289



[Lateral]
Mallodrya subaenea
BIN URI: BOLD:AAK7440



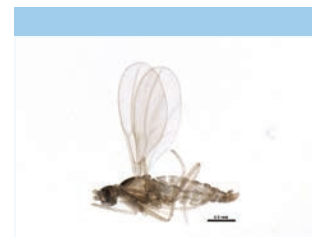
[Dorsal]
Trixagus carinicollis
BIN URI: BOLD:AAN6148



[Lateral]
Cecidomyiidae
BIN URI: BOLD:AAG6460



[Lateral]
Cecidomyiidae
BIN URI: BOLD:AAN5283



[Lateral]
Cecidomyiidae
BIN URI: BOLD:ACK3803



[Lateral]
Cecidomyiidae
BIN URI: BOLD:AAN5200



[Lateral]
Cecidomyiidae
BIN URI: BOLD:ABW8057



[Lateral]
Cecidomyiidae
BIN URI: BOLD:AAH3741



[Lateral]
Cecidomyiidae
BIN URI: BOLD:AAN5177



[Lateral]
Cecidomyiidae
BIN URI: BOLD:ABV0491



[Lateral]
Cecidomyiidae
BIN URI: BOLD:AAN5269



[Lateral]
Cecidomyiidae
BIN URI: BOLD:AAV5796



[Lateral]
Ceratopogonidae
BIN URI: BOLD:ACX8632



[Lateral]
Cricotopus vierriensis
BIN URI: BOLD:AAG1005



[Lateral]
Cricotopus
BIN URI: BOLD:AAP5922



[Lateral]
Cricotopus sp. 18ES
BIN URI: BOLD:ABY6869



[Lateral]
Cricotopus
BIN URI: BOLD:AAP5921



[Lateral]
Cricotopus
BIN URI: BOLD:ABY9141



[Lateral]
Chironomidae
BIN URI: BOLD:AAG1004



[Lateral]
Heterotrissocladius changi
BIN URI: BOLD:AX0836



[Lateral]
Heterotrissocladius
BIN URI: BOLD:AAN5369



[Lateral]
Limnophyes natalensis
BIN URI: BOLD:AAB7361



[Lateral]
Micropsectra subletteorum
BIN URI: BOLD:AAF7088



[Dorsal]
Paracladopelma winnelli
BIN URI: BOLD:AAK4963



[Lateral]
Parametricnemus
BIN URI: BOLD:ACP5424



[Lateral]
Sublettea
BIN URI: BOLD:ACJ8771



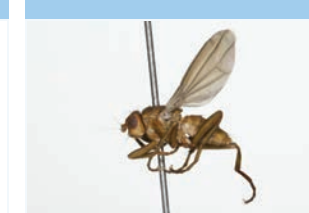
[Lateral]
Chironomidae
BIN URI: BOLD:ACI9990



[Lateral]
Orthoclaadiinae
BIN URI: BOLD:ACC4669



[Lateral]
Anopheles punctipennis
BIN URI: BOLD:AAC0584



[Lateral]
Heleomyzidae
BIN URI: BOLD:AAG0463



[Lateral]
Mycetophila fungorum
BIN URI: BOLD:ACF2821



[Lateral]
Phoridae
BIN URI: BOLD:AAG3236



[Lateral]
Phoridae
BIN URI: BOLD:AAL9075



[Lateral]
Psychodidae
BIN URI: BOLD:AAN8770



[Lateral]
Sciaridae
BIN URI: BOLD:AAM9242



[Lateral]
Sciaridae
BIN URI: BOLD:AAN6447



[Lateral]
Sciaridae
BIN URI: BOLD:AAN6433



[Lateral]
Leptosciarella scutellata
BIN URI: BOLD:ACD1218



[Lateral]
Sciaridae
BIN URI: BOLD:ABA1231



[Lateral]
Sciaridae
BIN URI: BOLD:ABA6511



[Lateral]
Sciaridae
BIN URI: BOLD:ACE3123



[Lateral]
Sciaridae
BIN URI: BOLD:AAN6442



[Lateral]
Sciaridae
BIN URI: BOLD:AAN6445



[Lateral]
Sciaridae
BIN URI: BOLD:AAM9228



[Lateral]
Sciaridae
BIN URI: BOLD:ACX4194



[Lateral]
Aleyrodidae
BIN URI: BOLD:AAZ8501



[Lateral]
Aleyrodidae
BIN URI: BOLD:AAZ8500



[Dorsal]
Hemiptera
BIN URI: BOLD:AAG3896



[Lateral]
Dikraneura
BIN URI: BOLD:AAZ2090



[Lateral]
Empoasca
BIN URI: BOLD:ACF5026



[Lateral]
Empoasca
BIN URI: BOLD:ACX8071



[Lateral]
Erythroneura tricincta
BIN URI: BOLD:AAZ6738



[Lateral]
Erythroneura vitifex
BIN URI: BOLD:AAZ6742



[Lateral]
Erythroneura vulnerata
BIN URI: BOLD:AAO8361



[Lateral]
Forcipata acclina
BIN URI: BOLD:AAN8283



[Lateral]
Aphelinus
BIN URI: BOLD:ABW3282



[Lateral]
Aphelinidae
BIN URI: BOLD:ABA5901



[Lateral]
Blacus stelfoxi
BIN URI: BOLD:AAZ9744



[Lateral]
Dinotrema
BIN URI: BOLD:AAA7636



[Lateral]
Heterospilus
BIN URI: BOLD:ACX9098



[Lateral]
Braconidae
BIN URI: BOLD:AAZ9207



[Lateral]
Diapriidae
BIN URI: BOLD:AAU8813



[Lateral]
Hymenoptera
BIN URI: BOLD:AAM7487



[Lateral]
Diapriidae
BIN URI: BOLD:AAM7500



[Lateral]
Encyrtidae
BIN URI: BOLD:AAZ0175



[Lateral]
Eulophidae
BIN URI: BOLD:ACJ6831



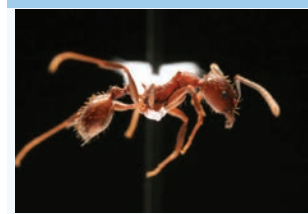
[Lateral]
Eulophidae
BIN URI: BOLD:AAZ3291



[Lateral]
Camponotus nearcticus



[Lateral]
Myrmica rubra



[Lateral]
Prenolepis imparis



[Lateral]
Stenamma



[Lateral]
Stenamma



[Lateral]
Poner

BIN URI: BOLD:AAD4432



[Lateral]
Orthocentrus winnertzi
BIN URI: BOLD:ACV9206

BIN URI: BOLD:AAD0829



[Lateral]
Hymenoptera
BIN URI: BOLD:AAU8205

BIN URI: BOLD:AAC1302



[Lateral]
Pimpla
BIN URI: BOLD:AAG0387

BIN URI: BOLD:AAM7182



[Lateral]
Pimpla pedalis
BIN URI: BOLD:AAD5192

BIN URI: BOLD:ABZ7273



[Lateral]
Therion
BIN URI: BOLD:AAE2886

BIN URI: BOLD:ACU4160



[Lateral]
Ichneumoninae
BIN URI: BOLD:AAG7660



[Lateral]
Megaspilidae
BIN URI: BOLD:ACJ1417



[adult]
Anaphes
BIN URI: BOLD:ACE9773



[Lateral]
Mymaridae
BIN URI: BOLD:ABW3187



[Lateral]
Mymaridae
BIN URI: BOLD:ACR6390



[Lateral]
Mymaridae
BIN URI: BOLD:ABA5896



[Lateral]
Telenomus
BIN URI: BOLD:AAU8347



[Lateral]
Telenomus
BIN URI: BOLD:AAU8457



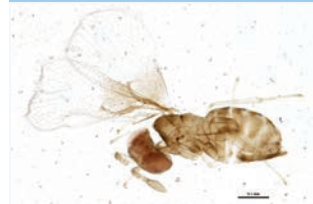
[Lateral]
Scelioninae
BIN URI: BOLD:ACA7752



[Lateral]
Dibrachys
BIN URI: BOLD:AAZ3284



[Lateral]
Pteromalidae
BIN URI: BOLD:AAU9045



[Lateral]
Trichogramma
BIN URI: BOLD:ABA5903



[Dorsal]
Bucculatrix ainsliella
BIN URI: BOLD:AAB4931



[Dorsal]
Agonopterix pulvipennella
BIN URI: BOLD:AAA7550



[Dorsal]
Idia aemula
BIN URI: BOLD:AAA2229



[Dorsal]
Chionodes thoraceochrella
BIN URI: BOLD:AAA4438



[Dorsal]
Phyllocnistis vitigenella
BIN URI: BOLD:AAI3014



[Lateral]
Coniopterygidae
BIN URI: BOLD:ACA4191



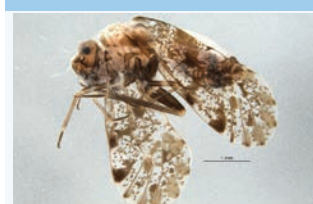
[Dorsal]
Caeciliusidae
BIN URI: BOLD:ACA3113



[Dorsal]
Ectopsocus meridionalis
BIN URI: BOLD:AAM8931



[Lateral]
Psocoptera
BIN URI: BOLD:AAH3227



[Lateral]
Trichadenotecnum alexanderae
complex
BIN URI: BOLD:ACE6318