

School Malaise Trap Program

Species Image Library

The images of the species collected in your Malaise trap are shown below. A single representative for each species was selected to be photographed; in some cases, only a damaged specimen was available.

Re-render images: per row

300 Records Per Page - Pages: 1



[Dorsal]
Sarcoptiformes
BIN URI: BOLD:ACP7917



[Lateral]
Entomobrya sp.
BIN URI: BOLD:AAA7249



[Dorsal]
Bourletiella
BIN URI: BOLD:ACC3010



[Dorsal]
Psylliodes cucullata
BIN URI: BOLD:ABX3225



[Dorsal]
Atomaria
BIN URI: BOLD:ACP7517



[Lateral]
Trachyphloeus bifoveolatus
BIN URI: BOLD:AAH0270



[Dorsal]
Corticaria
BIN URI: BOLD:ABA9093



[Lateral]
Sepedophilus marshami
BIN URI: BOLD:AAH9241



[Dorsal]
Pactopus hornii
BIN URI: BOLD:ACC3034



[Lateral]
Agromyzidae
BIN URI: BOLD:ACD1515



[Lateral]
Ophiomyia nasuta
BIN URI: BOLD:AAK5607



[Lateral]
Sylvicola fenestralis
BIN URI: BOLD:AAG1996



[Lateral]
Diptera
BIN URI: BOLD:AAA3453



[Lateral]
Anthomyiidae
BIN URI: BOLD:AAP8832



[Lateral]
Pegomya flavifrons
BIN URI: BOLD:AAG2479



[Lateral]
Anthomyiidae
BIN URI: BOLD:ACP6334



[Lateral]
Anthomyiidae
BIN URI: BOLD:AAG2451



[Lateral]
Cecidomyiidae
BIN URI: BOLD:ACP9720



[Lateral]
Cecidomyiidae
BIN URI: BOLD:ACP9347



[Lateral]
Cecidomyiidae
BIN URI: BOLD:AAP9039



[Lateral]
Cecidomyiidae
BIN URI: BOLD:ACF0670



[Dorsal]
Cecidomyiidae
BIN URI: BOLD:AAP9022



[Lateral]
Cecidomyiidae
BIN URI: BOLD:AAP6842



[Lateral]
Ceratopogonidae
BIN URI: BOLD:AAP9052



[Lateral]
Ceratopogonidae
BIN URI: BOLD:AAH5169



[Lateral]
Chamaemyiidae
BIN URI: BOLD:ACP9488



[Lateral]
Chironomidae
BIN URI: BOLD:AAG1004



[Lateral]
Chironomidae
BIN URI: BOLD:ABU5525



[Lateral]
Orthocladus
BIN URI: BOLD:ABX3879



[Lateral]
Chironomidae
BIN URI: BOLD:AAP6893



[Lateral]
Paracladopelma
BIN URI: BOLD:ACP7454



[Lateral]
Paracladopelma
BIN URI: BOLD:ACP9174



[Lateral]
Parametricnemus
BIN URI: BOLD:ACP8574



[Lateral]
Chironomidae
BIN URI: BOLD:ABY1090



[Lateral]
Chironomidae
BIN URI: BOLD:AAM6249



[Lateral]
Chironomidae
BIN URI: BOLD:ACB0946



[Dorsal]
Chironomidae
BIN URI: BOLD:ACP4736



[Lateral]
Chironomidae
BIN URI: BOLD:AAM7064



[Lateral]
Tvetenia
BIN URI: BOLD:AAB7489



[Lateral]
Chironomidae
BIN URI: BOLD:AAN5342



[Lateral]
Chloropidae
BIN URI: BOLD:AAH4148



[Lateral]
Elachiptera sibirica
BIN URI: BOLD:AAH4208



[Dorsal]
Culiseta
BIN URI: BOLD:AAC9132



[Lateral]
Dolichopodidae
BIN URI: BOLD:AAG9659



[Lateral]
Dolichopodidae
BIN URI: BOLD:AAG9626



[Lateral]
Ephydriidae
BIN URI: BOLD:AAG2740



[Lateral]
Suillia nemorum
BIN URI: BOLD:AAG0469



[Lateral]
Heleomyzidae
BIN URI: BOLD:AAP2913



[Lateral]
Heleomyzidae
BIN URI: BOLD:AAE1978



[Lateral]
Crossopalpus sp. 1 JMC
BIN URI: BOLD:ACE6928



[Lateral]
Empididae
BIN URI: BOLD:AAF9771



[Lateral]
Lauxaniidae
BIN URI: BOLD:AAP6482



[Lateral]
Symplecta
BIN URI: BOLD:AAF9014



[Lateral]
Lonchoptera
BIN URI: BOLD:AAG9974



[Lateral]
Muscidae
BIN URI: BOLD:AAP6478



[Lateral]
Muscidae
BIN URI: BOLD:AAB8818



[Lateral]
Mycetophilidae
BIN URI: BOLD:ABU5545



[Lateral]
Exechia
BIN URI: BOLD:ACD9501



[Lateral]
Mycetophilidae
BIN URI: BOLD:AAG4978



[Lateral]
Mycetophilidae
BIN URI: BOLD:ACP8015



[Lateral]
Mycetophilidae
BIN URI: BOLD:AAP8150



[Lateral]
Mycetophilidae
BIN URI: BOLD:ACA8373



[Lateral]
Mycetophilidae
BIN URI: BOLD:ABV9018



[Lateral]
Mycetophilidae
BIN URI: BOLD:ACP8145



[Lateral]
Phoridae
BIN URI: BOLD:AAG3236



[Lateral]
Phoridae
BIN URI: BOLD:ABU5529



[Lateral]
Phoridae
BIN URI: BOLD:ABV3315



[Lateral]
Phoridae
BIN URI: BOLD:AAG3255



[Lateral]
Phoridae
BIN URI: BOLD:ACI3059



[Lateral]
Phoridae
BIN URI: BOLD:ACB6729



[Lateral]
Phoridae
BIN URI: BOLD:ABV9330



[Lateral]
Phoridae
BIN URI: BOLD:ACI8154



[Lateral]
Phoridae
BIN URI: BOLD:AAP8727



[Lateral]
Psychoda sp.
BIN URI: BOLD:AAL7819



[Lateral]
Sciaridae
BIN URI: BOLD:AAH3941



[Lateral]
Scatopsiara
BIN URI: BOLD:AAH3920



[Lateral]
Sciaridae
BIN URI: BOLD:AAH3918



[Lateral]
Sciaridae
BIN URI: BOLD:AAP6465



[Lateral]
Sciaridae
BIN URI: BOLD:ABV1201



[Lateral]
Sciaridae
BIN URI: BOLD:ACC5491



[Lateral]
Sciaridae
BIN URI: BOLD:ACJ7008



[Lateral]
Sciaridae
BIN URI: BOLD:ABA6488



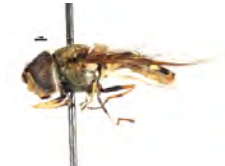
[Lateral]
Sciaridae
BIN URI: BOLD:ACB7219



[Lateral]
Sciaridae
BIN URI: BOLD:AAG4881



[Lateral]
Simulium arcticum complex
BIN URI: BOLD:AAA8954



[Lateral]
Syrphus torvus
BIN URI: BOLD:AAC6088



[Lateral]
Graphogaster
BIN URI: BOLD:ACP7602



[Dorsal]
Anthocoris musculus
BIN URI: BOLD:AAF9945



[Dorsal]
Acyrthosiphon pisum
BIN URI: BOLD:AAB1787



[Dorsal]
Aphis equiseticola
BIN URI: BOLD:AAK1985



[Lateral]
Callipterinella
BIN URI: BOLD:ACB2802



[Lateral]
Eriosoma americanum
BIN URI: BOLD:AAD7955



[Lateral]
Aphididae
BIN URI: BOLD:ACF1560



[Dorsal]
Macrosiphum euphorbiae
BIN URI: BOLD:AAA6213



[Dorsal]
Metopolophium dirhodum
BIN URI: BOLD:AAE7796



[Lateral]
Aphididae
BIN URI: BOLD:AAB9332



[Lateral]
Nearctaphis sensoriata
BIN URI: BOLD:AAG3602



[Dorsal]
Theroaphis tenera tenera
BIN URI: BOLD:AAE2871



[Lateral]
Theroaphis trifolii
BIN URI: BOLD:AAA3759



[Lateral]
Hemiptera
BIN URI: BOLD:ABA5818



[Lateral]
Empoasca luda
BIN URI: BOLD:ACN9975



[Dorsal]
Empoasca
BIN URI: BOLD:ABA5673



[Lateral]
Empoasca
BIN URI: BOLD:AAG8687



[Lateral]
Typhlocyba pomaria
BIN URI: BOLD:AAF5980



[Dorsal]
Cicadellidae
BIN URI: BOLD:ACP8819



[Lateral]
Nysius groenlandicus
BIN URI: BOLD:ACE3366



[Dorsal]
Lygus plagiatus
BIN URI: BOLD:ACF4388



[Dorsal]
Psallovius piceicola
BIN URI: BOLD:AAC4309



[Lateral]
Nabis americoferus
BIN URI: BOLD:AAB8143



[Lateral]
Aphidiinae
BIN URI: BOLD:AAA4188



[Lateral]
Braconidae
BIN URI: BOLD:AAG1359



[Lateral]
Aphidiinae
BIN URI: BOLD:ACP9662



[Lateral]
Braconidae
BIN URI: BOLD:ACN9016



[Dorsal]
Belyta validicornis
BIN URI: BOLD:AAU8736



[Dorsal]
Hymenoptera
BIN URI: BOLD:ACO0003



[Lateral]
Eulophidae
BIN URI: BOLD:ACP8271



[Lateral]
Tetrastichinae
BIN URI: BOLD:ACP8540



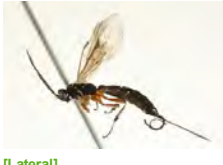
[Lateral]
Alloxysta
BIN URI: BOLD:ABY4020



[Lateral]
Cynipidae
BIN URI: BOLD:ACO9135



[Lateral]
Hymenoptera
BIN URI: BOLD:AAA6280



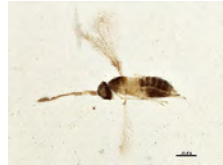
[Lateral]
Scambus jf01
BIN URI: BOLD:ACE6645



[Lateral]
Stenomacrus
BIN URI: BOLD:ACE4848



[Lateral]
Ichneumonidae
BIN URI: BOLD:AA7726



[Lateral]
Anagrus
BIN URI: BOLD:AAZ1968



[Dorsal]
Mymaridae
BIN URI: BOLD:ACP9287



[Lateral]
Mymaridae
BIN URI: BOLD:ACP9674



[Lateral]
Mymaridae
BIN URI: BOLD:ACB6947



[Lateral]
Telenomus
BIN URI: BOLD:ACP8654



[Dorsal]
Platygasteridae
BIN URI: BOLD:ACP8208



[Lateral]
Platygasteridae
BIN URI: BOLD:AAG7990



[Lateral]
Scelioninae
BIN URI: BOLD:ACP8198



[Lateral]
Pteromalidae
BIN URI: BOLD:ACD0516



[Lateral]
Vespula pensylvanica
BIN URI: BOLD:AAG8042



[Dorsal]
Chionodes obscurusella
BIN URI: BOLD:AAA4439



[Dorsal]
Thera juniperata
BIN URI: BOLD:AAA3914



[Dorsal]
Plutella xylostella
BIN URI: BOLD:AAA1513



[Dorsal]
Epinotia pulsatillana siskiyouensis
BIN URI: BOLD:AAF4278