

School Malaise Trap Program

Species Image Library

The images of the species collected in your Malaise trap are shown below. A single representative for each species was selected to be photographed; in some cases, only a damaged specimen was available.

Re-render images: per row

300 Records Per Page - Pages: 1



[Dorsal]
Araniella displicata
BIN URI: BOLD:AAA8399



[Dorsal]
Eustala anastera
BIN URI: BOLD:AAB7933



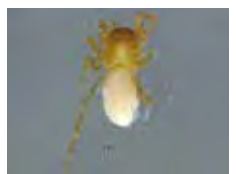
[Dorsal]
Clubiona moesta
BIN URI: BOLD:AAP3591



[Dorsal]
Clubiona pallidula
BIN URI: BOLD:AAI4087



[Dorsal]
Grammonota angusta
BIN URI: BOLD:AAD1499



[Dorsal]
Mermessus jona
BIN URI: BOLD:ACJ6896



[Lateral]
Philodromus cespitum
BIN URI: BOLD:AAB3836



[Dorsal]
Tetragnatha versicolor
BIN URI: BOLD:AAB7995



[Lateral]
Tetragnatha versicolor
BIN URI: BOLD:ACP8919



[Dorsal]
Tetragnatha versicolor
BIN URI: BOLD:ACN2276



[Dorsal]
Parasteatoda tepidariorum
BIN URI: BOLD:AAC0175



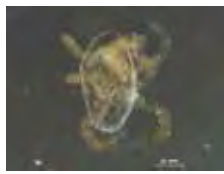
[Dorsal]
Bassariana utahensis
BIN URI: BOLD:AAF0365



[Dorsal]
Misumena vatia
BIN URI: BOLD:AAA6275



[Dorsal]
Misumessus oblongus
BIN URI: BOLD:AAA8847



[Dorsal]
Parasitidae
BIN URI: BOLD:AAI6711



[Dorsal]
Anystidae
BIN URI: BOLD:ABW5642



[Dorsal]
Anystidae
BIN URI: BOLD:ACO3990



[Lateral]
Entomobrya sp.
BIN URI: BOLD:AAA7249



[Lateral]
Entomobrya
BIN URI: BOLD:ACL6239



[Dorsal]
Cripodera
BIN URI: BOLD:ABA9095



[Dorsal]
Altica subplicata
BIN URI: BOLD:AAG4462



[Lateral]
Plagiodera versicolora
BIN URI: BOLD:AAG4477



[Dorsal]
Placopterus
BIN URI: BOLD:AAP8584



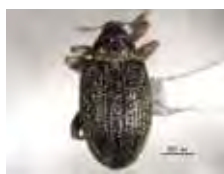
[Dorsal]
Coccinella septempunctata
BIN URI: BOLD:AAA8933



[Dorsal]
Coleomegilla maculata lengi
BIN URI: BOLD:AAD7604



[Dorsal]
Coccinellidae
BIN URI: BOLD:AAB5640



[Dorsal]
Isochnus rufipes
BIN URI: BOLD:ACA3052



[Dorsal]
Sitona hispidulus
BIN URI: BOLD:AAH0130



[Dorsal]
Curculionidae
BIN URI: BOLD:ABX3610



[Dorsal]
Corticarina
BIN URI: BOLD:AAH0256



[Lateral]
Corticarina
BIN URI: BOLD:ACD4236



[Dorsal]
Corticara gibbosa
BIN URI: BOLD:AAI8935



[Lateral]
Leiodidae
BIN URI: BOLD:ACP7899



[Lateral]
Leiodidae
BIN URI: BOLD:ACC5809



[Dorsal]
Acylomus
BIN URI: BOLD:AAH0135



[Lateral]
Cyphon obscurus
BIN URI: BOLD:AAH0074



[Dorsal]
Cyphon laevipennis
BIN URI: BOLD:AAG3633



[Dorsal]
Acrotona fungi
BIN URI: BOLD:ABW2813



Mycetoporus clavicomis
BIN URI: BOLD:ABW4933



[Dorsal]
Forficula auricularia-A
BIN URI: BOLD:AAG9897



[Lateral]
Anthomyiidae
BIN URI: BOLD:AAG2460



[Lateral]
Anthomyiidae
BIN URI: BOLD:AAG2463



[Lateral]
Anthomyiidae
BIN URI: BOLD:AAF8832



[Lateral]
Anthomyiidae
BIN URI: BOLD:AAH5497



[Lateral]
Pollenia labialis
BIN URI: BOLD:AAI2765



[Lateral]
Diptera
BIN URI: BOLD:AAG6745



[Lateral]
Pollenia vagabunda
BIN URI: BOLD:AAH3040



[Lateral]
Chironomus cf. decorus
BIN URI: BOLD:AAH7030



[Lateral]
Micropsectra polita
BIN URI: BOLD:AAC4403



[Lateral]
Paraphaenocladus impensus
BIN URI: BOLD:AAC4197



[Lateral]
Smittia
BIN URI: BOLD:AAH5355



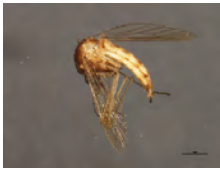
[Ventral]
Chironominae
BIN URI: BOLD:AAF6882



[Lateral]
Chironomidae
BIN URI: BOLD:ABA6447



[Lateral]
Chironomidae
BIN URI: BOLD:AAG7041



[Lateral]
Aedes vexans
BIN URI: BOLD:AAA7067



[Lateral]
Dolichopodidae
BIN URI: BOLD:ABV8935



[Lateral]
Dolichopodidae
BIN URI: BOLD:AAG6929



[Lateral]
Drosophila
BIN URI: BOLD:AAG8493



[Lateral]
Dryomyza anilis
BIN URI: BOLD:AAC6974



[Lateral]
Heleomyzidae
BIN URI: BOLD:AAE1978



[Lateral]
Dicranomyia frontalis
BIN URI: BOLD:ABA5203



[Lateral]
Coenosia tigrina
BIN URI: BOLD:AAB5609



[Lateral]
Muscidae
BIN URI: BOLD:AAG1711



[Lateral]
Phaonia
BIN URI: BOLD:ABU9891



[Lateral]
Mycetophilidae
BIN URI: BOLD:ABU5545



[Lateral]
Mycetophilidae
BIN URI: BOLD:AAG4905



[Dorsal]
Limoniidae
BIN URI: BOLD:AAF9045



[Lateral]
Phoridae
BIN URI: BOLD:AAG3236



[Lateral]
Phoridae
BIN URI: BOLD:AAG3358



[Lateral]
Psychodidae
BIN URI: BOLD:ABU5546



[Lateral]
Psychodinae
BIN URI: BOLD:ACP8377



[Lateral]
Diptera
BIN URI: BOLD:AAG6743



[Lateral]
Scathophagidae
BIN URI: BOLD:AAD0853



[Lateral]
Sciaridae
BIN URI: BOLD:AAM9242



[Lateral]
Sciaridae
BIN URI: BOLD:AAH3914



[Lateral]
Sciaridae
BIN URI: BOLD:AAN6447



[Lateral]
Sciaridae
BIN URI: BOLD:AAZ5589



[Lateral]
Sciaridae
BIN URI: BOLD:ABV1297



[Lateral]
Sciaridae
BIN URI: BOLD:AAM9255



[Lateral]
Tetanocera sp. 5
BIN URI: BOLD:AAE9313



[Lateral]
Themira annulipes
BIN URI: BOLD:AAZ5973



[Lateral]
Syrphus ribesii
BIN URI: BOLD:AAA4570



[Lateral]
Tipula paludosa
BIN URI: BOLD:AAE7386



[Lateral]
Rhopalomyzus Ionicerae
BIN URI: BOLD:AAC4637



[Dorsal]
Rhopalosiphum padi
BIN URI: BOLD:AAA9899



[Dorsal]
Hemiptera
BIN URI: BOLD:ABW2929



[Dorsal]
Idiocerus alternatus
BIN URI: BOLD:ACB0112



[Lateral]
Macrosteles quadrilineatus
BIN URI: BOLD:AAA9422



[Dorsal]
Typhlocyba
BIN URI: BOLD:ACJ7184



[Dorsal]
Phytocoris sp. F
BIN URI: BOLD:ABW9740



[Lateral]
Aphelinus varipes
BIN URI: BOLD:ABW3282



[Lateral]
Apanteles masmithi
BIN URI: BOLD:AAK1631



[Lateral]
Aphidius ervi
BIN URI: BOLD:ACI2531



[Lateral]
Aphidius rhopalosiphi
BIN URI: BOLD:AAD6802



[Lateral]
Aphidius
BIN URI: BOLD:ACF4786



[Lateral]
Aphidius
BIN URI: BOLD:AAF7225



[Dorsal]
Hymenoptera
BIN URI: BOLD:ACE4724



[Lateral]
Braconidae
BIN URI: BOLD:AAU8583



[Lateral]
Hymenoptera
BIN URI: BOLD:ACP8803



[Lateral]
Dinotrema
BIN URI: BOLD:AAU8452



[Lateral]
Meteorus
BIN URI: BOLD:AAG8408



[Lateral]
Microplitis kewleyi
BIN URI: BOLD:AAB8493



[Lateral]
Braconidae
BIN URI: BOLD:ACP8563



[Lateral]
Diapriidae
BIN URI: BOLD:ACF5774



[Lateral]
Eulophidae
BIN URI: BOLD:ACP9741



[Lateral]
Eulophidae
BIN URI: BOLD:ACP7579



[Lateral]
Hymenoptera
BIN URI: BOLD:AAU8573



[Lateral]
Formica glacialis
BIN URI: BOLD:AAA1468



[Lateral]
Formica
BIN URI: BOLD:AAE0406



[Lateral]
Lasius
BIN URI: BOLD:AAB9126



[Lateral]
Formicidae
BIN URI: BOLD:AAI1292



[Lateral]
Lissonota coracina
BIN URI: BOLD:AAG7794



[Lateral]
Oresbius
BIN URI: BOLD:ACE9715



[Lateral]
Banchinae
BIN URI: BOLD:AAH1851



[Lateral]
Ichneumonidae
BIN URI: BOLD:AAH1901



[Lateral]
Ooctonus notatus
BIN URI: BOLD:ABA3660



[Dorsal]
Hymenoptera
BIN URI: BOLD:ABZ8208



[Lateral]
Synopeas
BIN URI: BOLD:ACP7976



[Lateral]
Synopeas
BIN URI: BOLD:ACK2606



[Lateral]
Telenomus
BIN URI: BOLD:AAQ2659



[Lateral]
Platygastridae
BIN URI: BOLD:AAU8342



[Lateral]
Hymenoptera
BIN URI: BOLD:ACO4052



[Lateral]
Scelioninae
BIN URI: BOLD:ACP8190



[Lateral]
Telenomus
BIN URI: BOLD:AAU9340



[Lateral]
Telenomus
BIN URI: BOLD:AAU9439



[Lateral]
Pieromalidae
BIN URI: BOLD:ACI9027



[Dorsal]
Bedellia somnulentella
BIN URI: BOLD:AAI7773



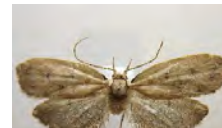
[Dorsal]
Bucculatrix pomifoliella
BIN URI: BOLD:AAD2085



[Dorsal]
Agonopterix pulvipennella
BIN URI: BOLD:AAA7550



[Dorsal]
Depressaria alienella
BIN URI: BOLD:AAH8523



[Dorsal]
Machimia tentoriferella
BIN URI: BOLD:AAA7893



[Lateral]
Halysidota tessellaris
BIN URI: BOLD:AAA3425



[Dorsal]
Phyllonorycter salicifoliella
BIN URI: BOLD:AAD4915



[Dorsal]
Phycitinae
BIN URI: BOLD:AAA7815



[Dorsal]
Apotomis removana
BIN URI: BOLD:ACE4055



[Dorsal]
Conwentzia pineticola
BIN URI: BOLD:AAU1711



[Lateral]
Melanoplus
BIN URI: BOLD:AAA4555



[Lateral]
Valenzuela burmeisteri
BIN URI: BOLD:AAO4092



[Lateral]
Psocoptera
BIN URI: BOLD:AAH8447



[Lateral]
Psocoptera
BIN URI: BOLD:AAH3228



[Lateral]
Psocoptera
BIN URI: BOLD:AAF1729



[Lateral]
Psocoptera
BIN URI: BOLD:AAH8450



[Lateral]
Psocoptera
BIN URI: BOLD:AAH8446



[Dorsal]
Lepidostomatinae
BIN URI: BOLD:ACP7577



[Lateral]
Limnephilus submonilifer
BIN URI: BOLD:AAA3080