

School Malaise Trap Program

Species Image Library

The images of the species collected in your Malaise trap are shown below. A single representative for each species was selected to be photographed; in some cases, only a damaged specimen was available.

Re-render images: per row

300 Records Per Page - Pages: 1



[Dorsal]
Walckenaeria spiralis
BIN URI: BOLD:AAH8314



[Dorsal]
Pardosa milvina
BIN URI: BOLD:AAB7668



[Dorsal]
Dendryphantes sp. 1GAB
BIN URI: BOLD:ACI9748



[Dorsal]
Tetragnatha versicolor
BIN URI: BOLD:AAB7995



[Dorsal]
Theridion glaucescens
BIN URI: BOLD:AAG1794



[Dorsal]
Arachnida
BIN URI: BOLD:ACM5222



[Dorsal]
Anystidae
BIN URI: BOLD:ABW2639



[Dorsal]
Anystidae
BIN URI: BOLD:ABW5642



[Lateral]
Collembola
BIN URI: BOLD:AAB7914



[Lateral]
Symphyleona
BIN URI: BOLD:ACP9571



[Dorsal]
Anthicus cervinus
BIN URI: BOLD:AAH2753



[Dorsal]
Chaetocnema concinna
BIN URI: BOLD:ABA9949



[Dorsal]
Diabrotica barberi
BIN URI: BOLD:AAH5012



[Lateral]
Diabrotica virgifera
BIN URI: BOLD:AAD4999



[Lateral]
Dibolia borealis
BIN URI: BOLD:AAL0908



[Lateral]
Paria fragariae
BIN URI: BOLD:ABA3960



[Lateral]
Paria fragariae
BIN URI: BOLD:ACF6671



[Dorsal]
Coleomegilla maculata lengi
BIN URI: BOLD:AAD7604



[Dorsal]
Coccinellidae
BIN URI: BOLD:AAB5640



[Dorsal]
Propylea quattuordecimpunctata
BIN URI: BOLD:AAF6935



[Dorsal]
Atomaria ephippiata
BIN URI: BOLD:AAP7030



[Lateral]
Atomaria
BIN URI: BOLD:ABA4650



[Lateral]
Hylesinus aculeatus
BIN URI: BOLD:AAU7331



[Dorsal]
Sitona hispidulus
BIN URI: BOLD:AAH0130



[Dorsal]
Aeolus
BIN URI: BOLD:ACP9027



[Dorsal]
Erotylidae
BIN URI: BOLD:ABA6320



[Lateral]
Stilbus apicalis
BIN URI: BOLD:AAH0134



[Dorsal]
Ahasverus advena
BIN URI: BOLD:AAJ2005



[Dorsal]
Philonthus carbonarius
BIN URI: BOLD:AAR1764



[Dorsal]
Stenistoderus rubripennis
BIN URI: BOLD:ACF9292



[Dorsal]
Tachinus jocosus
BIN URI: BOLD:ACC9422



[Dorsal]
Tachyporus nitidulus
BIN URI: BOLD:ABA9096



[Dorsal]
Staphylinidae
BIN URI: BOLD:ACF4289



[Dorsal]
Trixagus
BIN URI: BOLD:ABW2869



[Dorsal]
Forficula auricularia-A
BIN URI: BOLD:AAG9897



[Lateral]
Anthomyiidae
BIN URI: BOLD:AAG2467



[Lateral]
Diptera
BIN URI: BOLD:AAG6745



[Lateral]
Pollenia angustigena
BIN URI: BOLD:AAP2825



[Lateral]
Cecidomyiidae
BIN URI: BOLD:AAG6460



[Lateral]
Cecidomyiidae
BIN URI: BOLD:AAH3639



[Lateral]
Ceratopogonidae
BIN URI: BOLD:AAG6433



[Lateral]
Chironomidae
BIN URI: BOLD:ACK9793



[Lateral]
Chironomus cf. decorus
BIN URI: BOLD:AAB7030



[Lateral]
Chironomidae
BIN URI: BOLD:AAN5369



[Dorsal]
Paracladopelma winnelli
BIN URI: BOLD:AAK4963



[Lateral]
Smittia
BIN URI: BOLD:AAN5355



[Lateral]
Chironomidae
BIN URI: BOLD:AAH2254



[Lateral]
Tanytarsus heliomesonctios
BIN URI: BOLD:AAC2863



[Lateral]
Chironomidae
BIN URI: BOLD:AAN5342



[Dorsal]
Chironomidae
BIN URI: BOLD:AAP3767



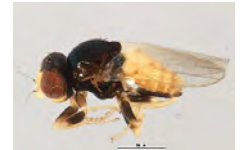
[Lateral]
Chironomidae
BIN URI: BOLD:AAG5443



[Lateral]
Chironomidae
BIN URI: BOLD:AAN5329



[Lateral]
Chironomidae
BIN URI: BOLD:AAG5457



[Lateral]
Chloropidae
BIN URI: BOLD:ABW1379



[Lateral]
Thaumatomyia glabra
BIN URI: BOLD:AAH4135



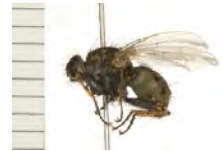
[Lateral]
Dolichopodidae
BIN URI: BOLD:AAM6787



[Lateral]
Drosophila
BIN URI: BOLD:AAG4893



[Lateral]
Tachypeza fenestrata
BIN URI: BOLD:AAF9887



[Lateral]
Coenosia tigrina
BIN URI: BOLD:AAB5609



[Lateral]
Muscina pascuorum
BIN URI: BOLD:AAG1714



[Lateral]
Muscidae
BIN URI: BOLD:ACE9475



[Lateral]
Mycetophila fungorum
BIN URI: BOLD:ACF2821



[Lateral]
Sceptonia sp. CJB1
BIN URI: BOLD:AAG4894



[Lateral]
Phoridae
BIN URI: BOLD:AAG3236



[Lateral]
Phoridae
BIN URI: BOLD:AAG3248



[Lateral]
Megaselia
BIN URI: BOLD:AAG3274



[Lateral]
Phoridae
BIN URI: BOLD:ABU5529



[Lateral]
Phoridae
BIN URI: BOLD:AAG3235



[Lateral]
Phoridae
BIN URI: BOLD:AAM7996



[Lateral]
Psychodidae
BIN URI: BOLD:AAO8538



[Lateral]
Boettcheria cimbicis
BIN URI: BOLD:AAG6756



[Lateral]
Boettcheria latisterna
BIN URI: BOLD:AAH7146



[Lateral]
Diptera
BIN URI: BOLD:AAG6743



[Lateral]
Scathophagidae
BIN URI: BOLD:AAD0853



[Lateral]
Bradyia difformis
BIN URI: BOLD:AAV1295



[Lateral]
Sciariidae
BIN URI: BOLD:AAM9252



[Lateral]
Sciariidae
BIN URI: BOLD:AAH3914



[Lateral]
Sciariidae
BIN URI: BOLD:AAV6412



[Lateral]
Sciariidae
BIN URI: BOLD:ACL8726



[Lateral]
Tetanocera plumosa
BIN URI: BOLD:AAC2266



[Lateral]
Spelobia ochripes
BIN URI: BOLD:AAG7279



[Lateral]
Syrphidae
BIN URI: BOLD:AAB2384



[Lateral]
Ptilodexia conjuncta
BIN URI: BOLD:AAG2147



[Lateral]
Nephrotoma ferruginea
BIN URI: BOLD:ABX6186



[Lateral]
Tipula paludosa
BIN URI: BOLD:AAE7386



[Lateral]
Tipula cf. maritima
BIN URI: BOLD:AAF8978



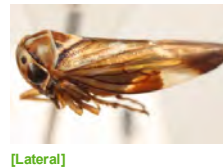
[Dorsal]
Anocia corni
BIN URI: BOLD:AAH2871



[Lateral]
Aphis glycines
BIN URI: BOLD:AAB7938



[Lateral]
Nearctaphis crataegifoliae
BIN URI: BOLD:ACF1270



[Lateral]
Balcanocerus fitchi
BIN URI: BOLD:ACP9158



[Dorsal]
Erythrulula
BIN URI: BOLD:ABA5831



[Lateral]
Erythrulula
BIN URI: BOLD:AAN8287



[Lateral]
Forcipata loca
BIN URI: BOLD:ACC8165



[Lateral]
Hemiptera
BIN URI: BOLD:AAG2898



[Lateral]
Pediopsoides distinctus
BIN URI: BOLD:ACI9823



[Lateral]
Scaphoideus forceps
BIN URI: BOLD:AAV9210



[Lateral]
Typhlocyba pomaria
BIN URI: BOLD:AAF5980



[Lateral]
Typhlocyba
BIN URI: BOLD:ABA5828



[Lateral]
Clastoptera obtusa
BIN URI: BOLD:AAG8823



[Lateral]
Hemiptera
BIN URI: BOLD:AAO4031



[Lateral]
Adelphocoris lineolatus
BIN URI: BOLD:ACE7444



[Dorsal]
Lygus lineolaris
BIN URI: BOLD:AAA5803



[Dorsal]
Cosmopepla bimaculata
BIN URI: BOLD:AAB6098



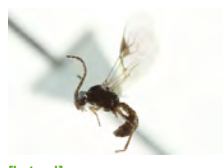
[Lateral]
Apanteles samarshalli
BIN URI: BOLD:AAF7670



[Lateral]
Aphidius rhopalosiphi
BIN URI: BOLD:ABZ3101



[Lateral]
Cotesia
BIN URI: BOLD:AAA9386



[Lateral]
Lysiphlebus
BIN URI: BOLD:AAG1226



[Lateral]
Aphidiinae
BIN URI: BOLD:AAH7443



[Lateral]
Alysinae
BIN URI: BOLD:AAAN8140



[Lateral]
Doryctinae
BIN URI: BOLD:ACP9341



[Lateral]
Hymenoptera
BIN URI: BOLD:AAG1429



[Lateral]
Hymenoptera
BIN URI: BOLD:AAO2112



[Lateral]
Cynipidae
BIN URI: BOLD:ABX2035



[Lateral]
Diapriidae
BIN URI: BOLD:ABA5906



[Lateral]
Diapriidae
BIN URI: BOLD:AAU8449



[Dorsal]
Diapriidae
BIN URI: BOLD:ACI4762



[Lateral]
Hymenoptera
BIN URI: BOLD:ABW3279



[Lateral]
Eulophidae
BIN URI: BOLD:AAU8577



[Lateral]
Cynipidae
BIN URI: BOLD:AAG0775



[Lateral]
Amblyopone
BIN URI: BOLD:AAD4306



[Lateral]
Formica glacialis
BIN URI: BOLD:AAA1468



[Lateral]
Ponerinae
BIN URI: BOLD:AAM7079



[Lateral]
Lasius
BIN URI: BOLD:AAB9126



[Lateral]
Hymenoptera
BIN URI: BOLD:AAC2392



[Lateral]
Myrmica americana
BIN URI: BOLD:AAA1839



[Lateral]
Ponerinae
BIN URI: BOLD:AAF0443



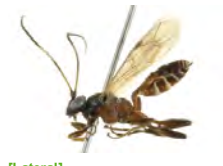
[Lateral]
Campoletis flavicincta
BIN URI: BOLD:AAAN7740



[Lateral]
Hymenoptera
BIN URI: BOLD:AAD4214



[Lateral]
Ichneumonidae
BIN URI: BOLD:AAG5788



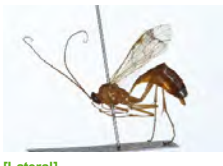
[Lateral]
Ichneumonidae
BIN URI: BOLD:AAG7630



[Lateral]
Lissonota coracina
BIN URI: BOLD:AAG7794



[Lateral]
Lissonota
BIN URI: BOLD:ACJ6551



[Lateral]
Netelia sayi
BIN URI: BOLD:AAG8112



[Lateral]
Netelia
BIN URI: BOLD:AAG3626



[Lateral]
Ichneumonidae
BIN URI: BOLD:AAG7683



[Lateral]
Hymenoptera
BIN URI: BOLD:AAD5194



[Lateral]
Hymenoptera
BIN URI: BOLD:AAB0892



[Lateral]
Therion
BIN URI: BOLD:AAE2886



[Lateral]
Ichneumonidae
BIN URI: BOLD:AAG7662



[Lateral]
Ichneumonidae
BIN URI: BOLD:AAU9315



[Lateral]
Cryptinae
BIN URI: BOLD:ACP8593



[Lateral]
Ichneumonidae
BIN URI: BOLD:ABZ5891



[Lateral]
Hymenoptera
BIN URI: BOLD:ACF3297



[Lateral]
Ichneumonidae
BIN URI: BOLD:AAG7652



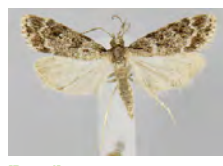
[Lateral]
Orthocentrinae
BIN URI: BOLD:AAG8257



[Lateral]
Telenomus
BIN URI: BOLD:ACM2546



[Lateral]
Hymenoptera
BIN URI: BOLD:AAAN8091



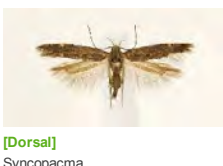
[Dorsal]
Scoparia biplagialis
BIN URI: BOLD:AAA1518



[Dorsal]
Hypena scabra
BIN URI: BOLD:AAA4222



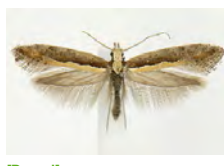
[Dorsal]
Lophocampa caryae
BIN URI: BOLD:AAB3918



[Dorsal]
Syncopacma
BIN URI: BOLD:AAF9988



[Lateral]
Sunira bicolorago
BIN URI: BOLD:AAA4426



[Dorsal]
Plutella xylostella
BIN URI: BOLD:AAA1513



[Dorsal]
Conwentzia pineticola
BIN URI: BOLD:AAU1711



[Lateral]
Hemerobius humulinus
BIN URI: BOLD:AAG0892



[Lateral]
Micromus
BIN URI: BOLD:AAG0893



[Lateral]
Oecanthus niveus
BIN URI: BOLD:AAF9890



[Lateral]
Psocoptera
BIN URI: BOLD:AAN8447



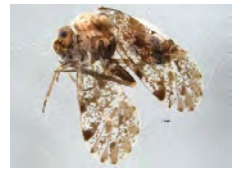
[Lateral]
Psocoptera
BIN URI: BOLD:AAH3228



[Lateral]
Psocoptera
BIN URI: BOLD:AAF1729



[Lateral]
Psocoptera
BIN URI: BOLD:AAH3225



[Lateral]
Psocoptera
BIN URI: BOLD:ACE6318



[Lateral]
Limnephilus submonilifer
BIN URI: BOLD:AAA3080