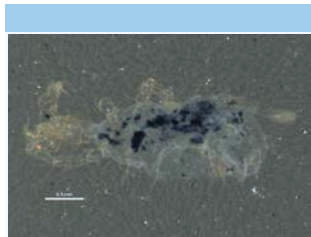


School Malaise Trap Program

Species Image Library

The images of the species collected in your Malaise trap are shown below. A single representative from each species was selected to be photographed; in some cases, only a damaged specimen was available.



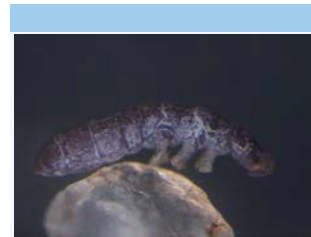
[Ventral]
Abrolophus
BIN URI: BOLD:ACF9019



[Lateral]
Entomobrya
BIN URI: BOLD:ACL6239



[Lateral]
Entomobryidae
BIN URI: BOLD:ACF6367



[Lateral]
Isotomidae
BIN URI: BOLD:ABX3807



[Lateral]
Diptera
BIN URI: BOLD:AAG6745



[Lateral]
Pollenia rudis
BIN URI: BOLD:AAH3035



[Lateral]
Protophormia terraenovae
BIN URI: BOLD:AAC9614



[Lateral]
Chironomidae
BIN URI: BOLD:ABA6465



[Lateral]
Chironomidae
BIN URI: BOLD:ACF6271



[Lateral]
Chironomidae
BIN URI: BOLD:ACK4694



[Lateral]
Orthocladiinae
BIN URI: BOLD:ACU9084



[Lateral]
Echiptera californica
BIN URI: BOLD:AAH4164



[Lateral]
Campsicnemus sp. SEB1
BIN URI: BOLD:AAG9637



[Lateral]
Campsicnemus alexanderi
BIN URI: BOLD:AAG9638



[Lateral]
Lispocephala alma
BIN URI: BOLD:AAE3275



[Lateral]
Lispocephala erythrocerata
BIN URI: BOLD:AAG1704



[Lateral]
Phoridae
BIN URI: BOLD:AAG3326



[Lateral]
Sciariidae
BIN URI: BOLD:ABA0929



[Lateral]
Apteromyia claviventris
BIN URI: BOLD:AAG7283



[Lateral]
Trichocera
BIN URI: BOLD:ACF7745



[Dorsal]
Empoasca
BIN URI: BOLD:AAV0166



[Lateral]
Psyllidae
BIN URI: BOLD:ACC5187



[Lateral]
Campopleginae
BIN URI: BOLD:ACU4400



[Lateral]
Campaea perlata
BIN URI: BOLD:AAA2078



[Dorsal]
Protobernia porcelaria
BIN URI: BOLD:AAA2077