

School Malaise Trap Program

Species Image Library

The images of the species collected in your Malaise trap are shown below. A single representative from each species was selected to be photographed; in some cases, only a damaged specimen was available.



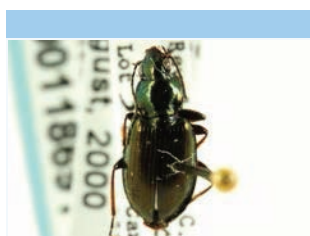
[Dorsal]
Clubiona riparia
BIN URI: BOLD:AAC8797



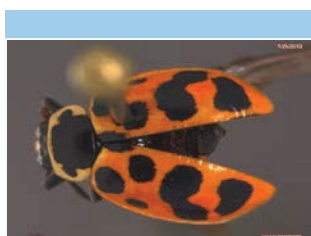
[Dorsal]
Piratula minuta
BIN URI: BOLD:AAE4247



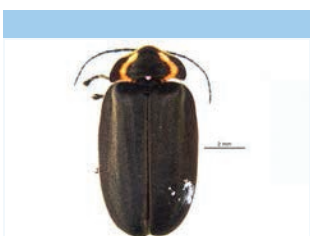
[Lateral]
Entomobrya
BIN URI: BOLD:ACL6239



[Dorsal]
Agonum cupreum
BIN URI: BOLD:AAH2774



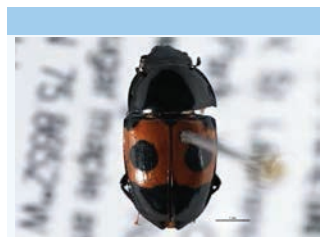
[Dorsal]
Hippodamia tredecimpunctata
BIN URI: BOLD:AAX1229



[Dorsal]
Elychnia corrusca
BIN URI: BOLD:AAF4976



[Dorsal]
Corticarina
BIN URI: BOLD:AAH0256



[Dorsal]
Glischrochilus sanguinolentus
BIN URI: BOLD:AAP8585



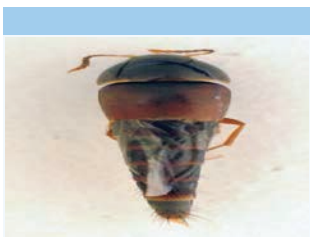
[Dorsal]
Cyphon laevipennis
BIN URI: BOLD:AAG3633



[Lateral]
Scirtidae
BIN URI: BOLD:ACI5580



[Dorsal]
Earota dentata
BIN URI: BOLD:AC06491



[Dorsal]
Sepedophilus marshami
BIN URI: BOLD:AAN9241



[Lateral]
Staphylinidae
BIN URI: BOLD:ACM6907



[Lateral]
Staphylinidae
BIN URI: BOLD:ACM2432



[Lateral]
Phytobia setosa
BIN URI: BOLD:AAM7338



[Lateral]
Hylemya sp. Schuehli 28.iv.01
BIN URI: BOLD:AAP2967



[Lateral]
Aulacigaster neoleucopeza
BIN URI: BOLD:AAV0437



[Lateral]
Diptera
BIN URI: BOLD:AAG6745



[Lateral]
Pollenia labialis
BIN URI: BOLD:AAI2765



[Lateral]
Gymnometrioctenemus brumalis
BIN URI: BOLD:AAP6873



[Lateral]
Limnophyes
BIN URI: BOLD:ABU5525



[Lateral]
Limnophyes
BIN URI: BOLD:ABV1190



[Lateral]
Limnophyes
BIN URI: BOLD:AAN5339



[Lateral]
Metroctenemus
BIN URI: BOLD:ABA6408



[Lateral]
Smittia edwardsi
BIN URI: BOLD:AAF4817



[Lateral]
Smittia sp. 23ES
BIN URI: BOLD:AAH9641



[Lateral]
Chironomidae
BIN URI: BOLD:ACF9312



[Lateral]
Chironomidae
BIN URI: BOLD:ABA6465



[Lateral]
Chironomidae
BIN URI: BOLD:ABA1222



[Lateral]
Chironomidae
BIN URI: BOLD:ACK4694



[Lateral]
Chironomidae
BIN URI: BOLD:ACF6271



[Dorsal]
Chloropidae
BIN URI: BOLD:ACE3223



[Lateral]
Ephydriidae
BIN URI: BOLD:AAG2754



[Lateral]
Dichaeta caudata
BIN URI: BOLD:AAP1856



[Lateral]
Heleomyzidae
BIN URI: BOLD:AAG0366



[Lateral]
Hybotidae
BIN URI: BOLD:AAN5501



[Lateral]
Lonchopteridae
BIN URI: BOLD:ACU6048



[Lateral]
Eudasiphora
BIN URI: BOLD:AAG6757



[Dorsal]
Diptera
BIN URI: BOLD:AAG1742



[Lateral]
Lispocephala alma
BIN URI: BOLD:AAE3275



[Lateral]
Phoridae
BIN URI: BOLD:AAG3274



[Lateral]
Phoridae
BIN URI: BOLD:ABU5535



[Lateral]
Phoridae
BIN URI: BOLD:AAG3266



[Lateral]
Megaselia
BIN URI: BOLD:ABU5528



[Lateral]
Megaselia
BIN URI: BOLD:AAU6524



[Lateral]
Phoridae
BIN URI: BOLD:AAN8681



[Lateral]
Phoridae
BIN URI: BOLD:AAG3316



[Lateral]
Phoridae
BIN URI: BOLD:AAU5645



[Lateral]
Scathophaga furcata
BIN URI: BOLD:AAH0022



[Lateral]
Sciariidae
BIN URI: BOLD:ABA0929



[Lateral]
Lycoriella castanescens
BIN URI: BOLD:ABA1215



[Lateral]
Apteromyia claviventris
BIN URI: BOLD:AAG7283



[Lateral]
Leptocera neo nalis
BIN URI: BOLD:AAP6443



[Lateral]
Spelobia semioculata
BIN URI: BOLD:AAL7752



[Lateral]
Sphaeroceridae
BIN URI: BOLD:AAG7021



[Lateral]
Spelobia clunipes
BIN URI: BOLD:AAG7312



[Lateral]
Sphaeroceridae
BIN URI: BOLD:ACA4498



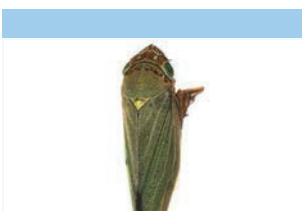
[Lateral]
Cercopidae
BIN URI: BOLD:AAG8827



[Dorsal]
Empoasca
BIN URI: BOLD:AAV0166



[Lateral]
Empoasca
BIN URI: BOLD:AAV0226



[Dorsal]
Helochara communis
BIN URI: BOLD:AAG8838



[Lateral]
Cicadellidae
BIN URI: BOLD:ACO1312



[Lateral]
Psyllidae
BIN URI: BOLD:ACU4466



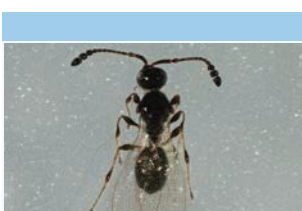
[Lateral]
Psyllidae
BIN URI: BOLD:ACF6530



[Lateral]
Psyllidae
BIN URI: BOLD:ACU7329



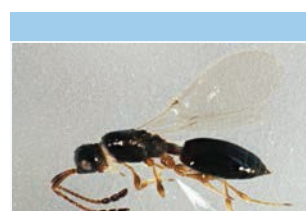
[Lateral]
Trichopria
BIN URI: BOLD:ABA5937



[Dorsal]
Trichopria
BIN URI: BOLD:ACF9546



[Lateral]
Diapriidae
BIN URI: BOLD:AAU8399



[Lateral]
Diapriidae
BIN URI: BOLD:AAG7899



[Lateral]
Diapriidae
BIN URI: BOLD:ACL6452



[Lateral]
Lasius neoniger
BIN URI: BOLD:AAB9126



[Plate]
Lasioglossum ephialtum
BIN URI: BOLD:ABZ0652



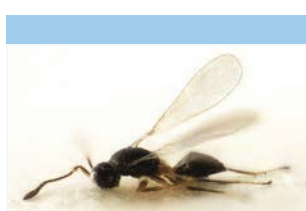
[Lateral]
Ophion
BIN URI: BOLD:ACE2887



[Lateral]
Ophion
BIN URI: BOLD:AAG7774



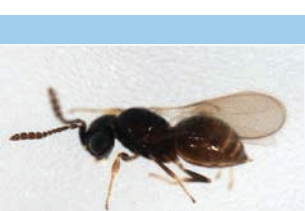
[Lateral]
Ichneumoninae
BIN URI: BOLD:ABZ7151



[Lateral]
Ooctonus silvensis
BIN URI: BOLD:AAN7553



[Lateral]
Ooctonus
BIN URI: BOLD:AAV9180



[Lateral]
Telenomus
BIN URI: BOLD:AAZ3289



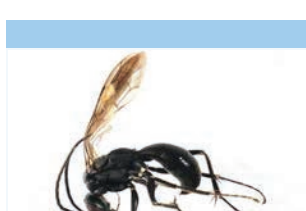
[Lateral]
Trichacis
BIN URI: BOLD:AAU8203



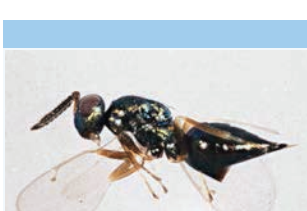
[Lateral]
Platygastriidae
BIN URI: BOLD:AAN7618



[Dorsal]
Platygastriinae
BIN URI: BOLD:ACB1002



[Lateral]
Pepsinae
BIN URI: BOLD:AAN7826



[Lateral]
Cecidostiba
BIN URI: BOLD:ACF8620



[Lateral]
Pteromalidae
BIN URI: BOLD:ACJ7143



[Lateral]
Pteromalidae
BIN URI: BOLD:ACU6594



[Lateral]
Pteromalidae
BIN URI: BOLD:ACU6444



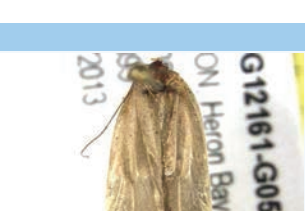
[Lateral]
Dolerus abstrusus
BIN URI: BOLD:AAN8131



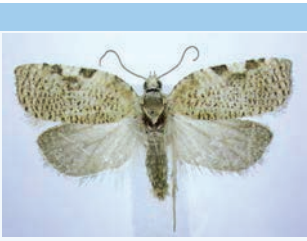
[Dorsal]
Agonopterix pulvipennella
BIN URI: BOLD:AAA7550



[Lateral]
Agonopterix
BIN URI: BOLD:ACM4803



[Dorsal]
Agonopterix
BIN URI: BOLD:ACM7077



[Dorsal]

Acleris cervinana
BIN URI: BOLD:AAB2296



[Dorsal]

Acleris hastiana
BIN URI: BOLD:AAA9792



[Dorsal]

Acleris maccana
BIN URI: BOLD:AAA8391



[Dorsal]

Acleris semiannula
BIN URI: BOLD:AAB4304



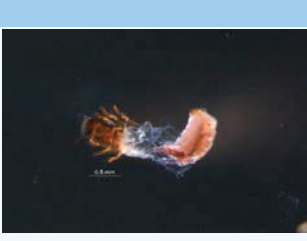
[Dorsal]

Acleris hastiana
BIN URI: BOLD:AAA9795



[Lateral]

Ypsolopha falciferella
BIN URI: BOLD:AAD2488



[Dorsal]

Apatania
BIN URI: BOLD:ABU5586