

School Malaise Trap Program

Species Image Library

The images of the species collected in your Malaise trap are shown below. A single representative from each species was selected to be photographed; in some cases, only a damaged specimen was available.



[Dorsal]
Tapinocyba simplex
BIN URI: BOLD:AAD3796



[Dorsal]
Thyreosthenius biovatus
BIN URI: BOLD:AA7604



[Dorsal]
Piratula cantralli
BIN URI: BOLD:ABZ5613



[Lateral]
Entomobrya
BIN URI: BOLD:ACL6239



[Dorsal]
Coccinellidae
BIN URI: BOLD:AAB5640



[Dorsal]
Scymnus suturalis
BIN URI: BOLD:AAP8242



[Lateral]
Caenocara
BIN URI: BOLD:ACF8151



[Dorsal]
Ptinus
BIN URI: BOLD:ACF8154



[Dorsal]
Cyphon
BIN URI: BOLD:AAU7169



[Dorsal]
Cyphon laevipennis
BIN URI: BOLD:AAG3633



[Dorsal]
Dinaraea aequata
BIN URI: BOLD:AAM0420



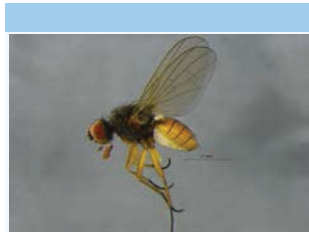
[Lateral]
Tachyporus chrysomelinus
BIN URI: BOLD:AAN9511



[Lateral]
Anisopodidae
BIN URI: BOLD:AAG2000



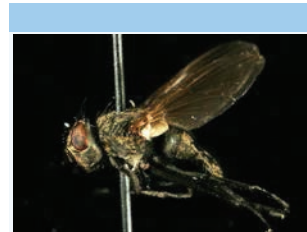
[Lateral]
Egle
BIN URI: BOLD:AAI6224



[Lateral]
Anthomyiidae
BIN URI: BOLD:AAG2479



[Lateral]
Phormia regina
BIN URI: BOLD:AAB9140



[Lateral]
Diptera
BIN URI: BOLD:AAG6745



[Lateral]
Pollenia vagabunda
BIN URI: BOLD:AAH3040



[Lateral]
Pollenia rudis
BIN URI: BOLD:AAP2825



[Lateral]
Cecidomyiidae
BIN URI: BOLD:ABX8104



[Lateral]
Micromyiinae
BIN URI: BOLD:ACL2290



[Lateral]
Chironomus maturus
BIN URI: BOLD:AAB4657



[Lateral]
Gymnometricnemus brumalis
BIN URI: BOLD:AAP6873



[Lateral]
Chironomidae
BIN URI: BOLD:AAI4195



[Lateral]
Limnophyes
BIN URI: BOLD:ABU5525



[Lateral]
Limnophyes
BIN URI: BOLD:AAN5339



[Lateral]
Metricnemus
BIN URI: BOLD:ACJ5126



[Lateral]
Chironomidae
BIN URI: BOLD:ACP4736



[Lateral]
Orthoclaadiinae
BIN URI: BOLD:ACL2257



[Lateral]
Chironomidae
BIN URI: BOLD:AAN5356



[Lateral]
Chironomidae
BIN URI: BOLD:ACJ5397



[Lateral]
Chironomidae
BIN URI: BOLD:ACJ4457



[Lateral]
Chironomidae
BIN URI: BOLD:AAQ0602



[Lateral]
Chironomidae
BIN URI: BOLD:AAM6284



[Lateral]
Chironomidae
BIN URI: BOLD:AAQ3439



[Lateral]
Chironomidae
BIN URI: BOLD:ACF8488



[Lateral] Chironomidae BIN URI: BOLD:ABA1222	[Lateral] Chironomidae BIN URI: BOLD:ACF9312	[Lateral] Orthoclaadiinae BIN URI: BOLD:AAV5942	[Lateral] Chironomidae BIN URI: BOLD:ABU5526	[Lateral] Chironomidae BIN URI: BOLD:ACF8415	[Lateral] Chironomidae BIN URI: BOLD:ACK4694
[Lateral] Chironomidae BIN URI: BOLD:ABA6465	[Lateral] Tanypodinae BIN URI: BOLD:AAM6281	[Lateral] Scaptomyza BIN URI: BOLD:ACD8914	[Lateral] Lispocephala alma BIN URI: BOLD:AAE3275	[Lateral] Musca autumnalis BIN URI: BOLD:AAA3187	[Lateral] Muscina pascuorum BIN URI: BOLD:AAG1714
[Lateral] Mycetophilidae BIN URI: BOLD:ABW1532	[Lateral] Phoridae BIN URI: BOLD:ABU5529	[Lateral] Phoridae BIN URI: BOLD:ACL3178	[Lateral] Scatophaga furcata BIN URI: BOLD:AAH0022	[Lateral] Sciaridae BIN URI: BOLD:ABA0929	[Lateral] Sphaeroceridae BIN URI: BOLD:AAH3548
[Lateral] Spelobia semiculata BIN URI: BOLD:AAL7752	[Lateral] Spelobia clunipes BIN URI: BOLD:AAG7312	[Lateral] Sphaeroceridae BIN URI: BOLD:AAP2682	[Lateral] Empoasca BIN URI: BOLD:AAV6744	[Lateral] Stenocranus felti BIN URI: BOLD:AAG1953	[Dorsal] Kleidocerys ovalis BIN URI: BOLD:AAD4820
[Dorsal] Macrolophus tenuicornis BIN URI: BOLD:ABA5768	[Lateral] Aphidius BIN URI: BOLD:AAF7225	[Lateral] Ophion BIN URI: BOLD:AAG7774	[Lateral] Ichneumoninae BIN URI: BOLD:AAH2004	[Lateral] Ichneumoninae BIN URI: BOLD:ACU5130	[Lateral] Telenomus BIN URI: BOLD:ABA6124
[Lateral] Dolerus asper BIN URI: BOLD:AAG7773	[Lateral] Polistes fuscatus BIN URI: BOLD:AAA6508	[Dorsal] Agonopterix pulvipennella BIN URI: BOLD:AAA7550	[Dorsal] Plutella xylostella BIN URI: BOLD:AAA1513	[Dorsal] Taeniothrips inconsequens BIN URI: BOLD:ACC0651	[Dorsal] Thripidae BIN URI: BOLD:ACF7004