

School Malaise Trap Program

Species Image Library

The images of the species collected in your Malaise trap are shown below. A single representative from each species was selected to be photographed; in some cases, only a damaged specimen was available.



[Dorsal]
Tricholathys spiralis
BIN URI: BOLD:ACK8495



[Dorsal]
Erigone aletris
BIN URI: BOLD:AAD1746



[Dorsal]
Pardosa moesta
BIN URI: BOLD:AAB0863



[Dorsal]
Pardosa prolifica
BIN URI: BOLD:ACE8979



[Dorsal]
Pardosa tesquorum
BIN URI: BOLD:AAO1766



[Dorsal]
Pardosa vancouveri
BIN URI: BOLD:AAP3081



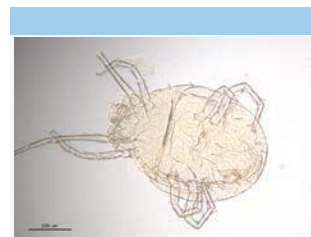
[Dorsal]
Pardosa furcifera
BIN URI: BOLD:AAA5090



[Dorsal]
Prata piraticus
BIN URI: BOLD:AAB6784



[Dorsal]
Philodromus rufus vibrans
BIN URI: BOLD:AAB2768



[Ventral]
Tetranychidae
BIN URI: BOLD:AAM8017



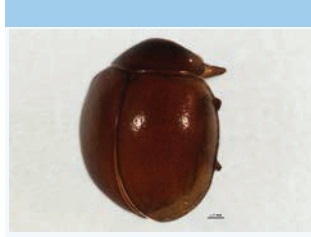
[Dorsal]
Brachyceridae
BIN URI: BOLD:ACU9834



[Dorsal]
Adalia bipunctata
BIN URI: BOLD:AAH3316



[Dorsal]
Coccinella septempunctata
BIN URI: BOLD:AAA8933



[Dorsal]
Coccinellidae
BIN URI: BOLD:ACU8237



[Larva]
Coccinellinae
BIN URI: BOLD:ACM5036



[Lateral]
Hylesinus criddlei
BIN URI: BOLD:ABA9073



[Dorsal]
Elateridae
BIN URI: BOLD:ACG6861



[Dorsal]
Tachyporus maculicollis
BIN URI: BOLD:ACG4536



[Lateral]
Anisopodidae
BIN URI: BOLD:AAL7534



[Lateral]
Diptera
BIN URI: BOLD:AAA3453



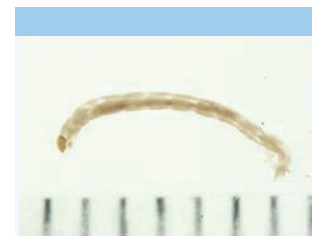
[Lateral]
Egle
BIN URI: BOLD:ACF4994



[Lateral]
Aulacigaster neoleucopeza
BIN URI: BOLD:AAV0437



[Lateral]
Chironomus atrella
BIN URI: BOLD:AAG5507



[Lateral]
Chironominae
BIN URI: BOLD:AAI4297



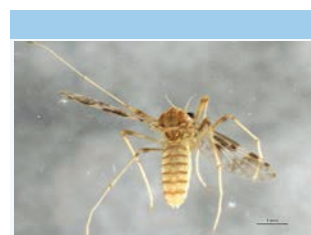
[Lateral]
Chironomus sp. TE11
BIN URI: BOLD:AAB4581



[Larva]
Diamesa nr. *hyperborea*
BIN URI: BOLD:AAL5996



[Lateral]
Psectrocladius cf. *limbatellus*
BIN URI: BOLD:ACK7326



[Lateral]
Psectrotanypus sp. ES01
BIN URI: BOLD:AAG0314



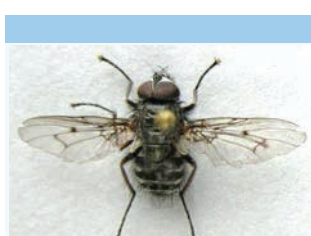
[Lateral]
Tanytarsus
BIN URI: BOLD:AAG5467



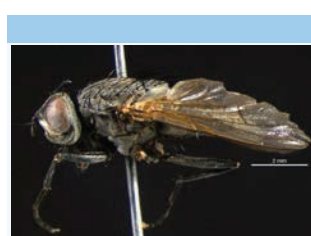
[Lateral]
Procladius denticulatus
BIN URI: BOLD:AAF6798



[Lateral]
Cecotheca nr. *fenestralis*
BIN URI: BOLD:AAM7341



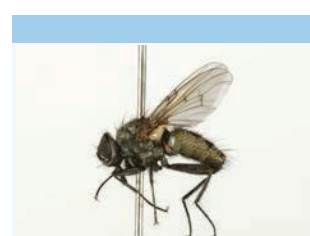
[Dorsal]
Diptera
BIN URI: BOLD:AAG1742



[Lateral]
Helina
BIN URI: BOLD:ACA9225



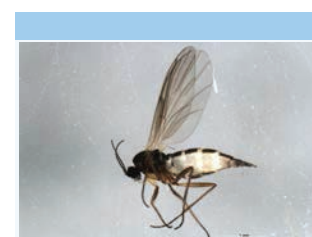
[Lateral]
Muscina pasuorum
BIN URI: BOLD:AAG1714



[Lateral]
Helina reversio
BIN URI: BOLD:AAD0642



[Lateral]
Myospila mediatubunda
BIN URI: BOLD:AAD7145



[Lateral]

Mycetophilidae
BIN URI: BOLD:ABU5545



[Lateral]

Sciaridae
BIN URI: BOLD:AAZ5612



[Dorsal]

Euceraphis betulae
BIN URI: BOLD:AAI4926



[Lateral]

Aphidius cingulatus
BIN URI: BOLD:AAH7433



[Lateral]

Camponotus avidincta
BIN URI: BOLD:AAZ8147



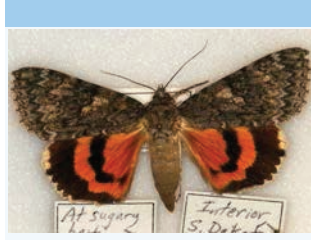
[Lateral]

Diplazontinae
BIN URI: BOLD:ACP8913



[Lateral]

Pteromalidae
BIN URI: BOLD:AAU9547



[Dorsal]

Catocala meskei
BIN URI: BOLD:AA80100



[Lateral]

Taenionema paci cum
BIN URI: BOLD:ACU7560



[Lateral]

Sarcophagidae
BIN URI: BOLD:AAH7140



[Dorsal]

Eupeodes americanus
BIN URI: BOLD:AA82384



[Dorsal]

Pterocomma beulahense
BIN URI: BOLD:ABZ7255



[Lateral]

Alysinae
BIN URI: BOLD:AAG1265



[Lateral]

Hymenoptera
BIN URI: BOLD:AAD4214



[Lateral]

Ichneumonidae
BIN URI: BOLD:ACU9380



[Lateral]

Pteromalidae
BIN URI: BOLD:ACU7662



[Dorsal]

Caloptilia fraxinella
BIN URI: BOLD:AAF8249



[Dorsal]

Phyllonorycter
BIN URI: BOLD:AAI2946



[Lateral]

Scathophagidae
BIN URI: BOLD:AAD0853



[Lateral]

Scaeva pyrastris
BIN URI: BOLD:AAF2373



[Dorsal]

Empoasca
BIN URI: BOLD:ABA5763



[Lateral]

Hymenoptera
BIN URI: BOLD:ACN0454



[Lateral]

Ichneumonidae
BIN URI: BOLD:AAD0079



[Lateral]

Cubocephalus
BIN URI: BOLD:AAH1482



[Lateral]

Pteromalidae
BIN URI: BOLD:ACE1279



[Dorsal]

Brachyloimia populi
BIN URI: BOLD:AAE0555



[Dorsal]

Ufeus plicatus
BIN URI: BOLD:AAD7193



[Lateral]

Sciaridae
BIN URI: BOLD:AAH3941



[Lateral]

Syrphus vitripennis
BIN URI: BOLD:AA85577



[Dorsal]

Idiocerus moniliferae
BIN URI: BOLD:ABX8899



[Lateral]

Formica accreta
BIN URI: BOLD:AAA4975



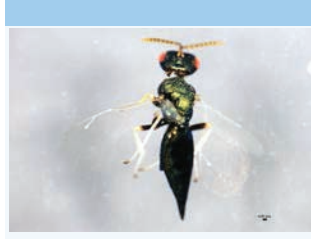
[Lateral]

Ichneumonidae
BIN URI: BOLD:ACF1359



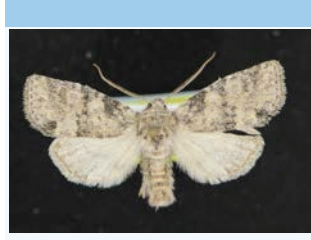
[Lateral]

Cryptinae
BIN URI: BOLD:ACC4659



[Dorsal]

Pteromalinae
BIN URI: BOLD:AAU9445



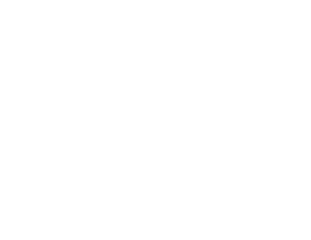
[Dorsal]

Ufeus plicatus
BIN URI: BOLD:AAD7193



[Dorsal]

Ufeus plicatus
BIN URI: BOLD:AAD7193



[Lateral]

Sciaridae
BIN URI: BOLD:ACD3834



[Lateral]

Panzeria ampelus
BIN URI: BOLD:AAI2544



[Lateral]

Idiocerus midas
BIN URI: BOLD:ABZ6671



[Lateral]

Formica
BIN URI: BOLD:ABZ6707



[Lateral]

Cryptinae
BIN URI: BOLD:ACU8774



[Lateral]

Asaphes vulgaris
BIN URI: BOLD:AAP6695



[Lateral]

Nematinae
BIN URI: BOLD:ACU9411



[Dorsal]

Ufeus plicatus
BIN URI: BOLD:AAD7193



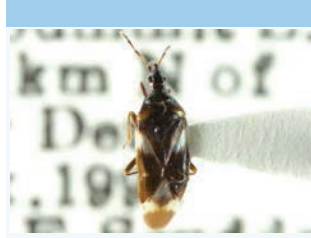
[Dorsal]

Ufeus plicatus
BIN URI: BOLD:AAD7193



[Lateral]

Sciaridae
BIN URI: BOLD:AAH3943



[Dorsal]

Anthocoris antevolens
BIN URI: BOLD:ACU7840



[Dorsal]

Physatocheila variegata
BIN URI: BOLD:ACD0489



[Lateral]

Lasius
BIN URI: BOLD:AAI1292



[Lateral]

Syrphoctonus
BIN URI: BOLD:ACG6310



[Lateral]

Pteromalidae
BIN URI: BOLD:ACU8372



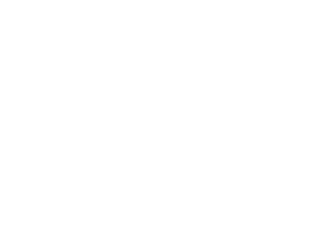
[Dorsal]

Depressaria pastinacella
BIN URI: BOLD:AA8253



[Dorsal]

Plutella xylostella
BIN URI: BOLD:AAA1513



[Dorsal]

Plutella xylostella
BIN URI: BOLD:AAA1513



