

# School Malaise Trap Program

## Species Image Library

The images of the species collected in your Malaise trap are shown below. A single representative from each species was selected to be photographed; in some cases, only a damaged specimen was available.



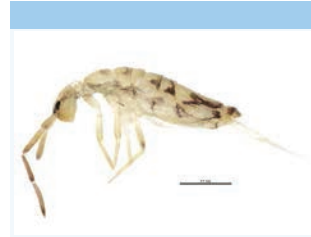
[Dorsal]  
*Cicurina brevis*  
BIN URI: BOLD:AAC8284



[Dorsal]  
*Dismodicus decemoculatus*  
BIN URI: BOLD:AAA9584



[Dorsal]  
*Pocadicnemis occidentalis*  
BIN URI: BOLD:ACN9637



[Lateral]  
*Entomobrya*  
BIN URI: BOLD:ACL6239



[Lateral]  
*Paria fragariae*  
BIN URI: BOLD:ACF6671



[Dorsal]  
*Cyphon laevipennis*  
BIN URI: BOLD:AAG3633



[Dorsal]  
*Philonthus carbonarius*  
BIN URI: BOLD:AAR1764



[Lateral]  
Anisopodidae  
BIN URI: BOLD:AAG1996



[Lateral]  
Anisopodidae  
BIN URI: BOLD:AAG2000



[Lateral]  
*Pollenia labialis*  
BIN URI: BOLD:AAI2765



[Lateral]  
Cecidomyiidae  
BIN URI: BOLD:ACN7805



[Lateral]  
*Chironomus atrella*  
BIN URI: BOLD:AAG5507



[Lateral]  
*Chironomus maturus*  
BIN URI: BOLD:AAB4657



[Lateral]  
*Gymnometrocnemus*  
BIN URI: BOLD:AAI1981



[Lateral]  
*Limnophyes*  
BIN URI: BOLD:AAI5339



[Lateral]  
*Metrocnemus intergervius*  
BIN URI: BOLD:AAG5480



[Lateral]  
*Procladius*  
BIN URI: BOLD:ACU4861



[Lateral]  
Chironomidae  
BIN URI: BOLD:ACN3550



[Lateral]  
Chironomidae  
BIN URI: BOLD:ACD0921



[Lateral]  
Chironomidae  
BIN URI: BOLD:ACU5153



[Lateral]  
Chironomidae  
BIN URI: BOLD:ACF8488



[Lateral]  
Chironomidae  
BIN URI: BOLD:ACK8142



[Lateral]  
Chironomidae  
BIN URI: BOLD:ABU5526



[Lateral]  
Orthoclaadiinae  
BIN URI: BOLD:ACL0347



[Lateral]  
Orthoclaadiinae  
BIN URI: BOLD:ACK7714



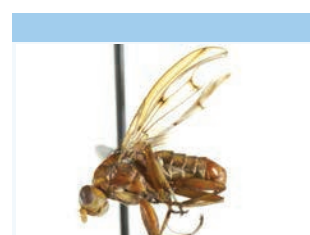
[Lateral]  
Orthoclaadiinae  
BIN URI: BOLD:AAV5942



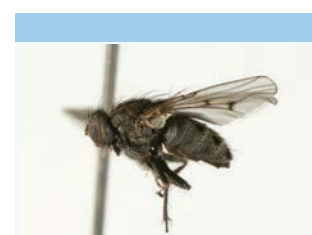
[Lateral]  
*Coelopa frigida*  
BIN URI: BOLD:AAG0822



[Lateral]  
Heleomyzidae  
BIN URI: BOLD:AAG0366



[Lateral]  
*Suillia apicalis*  
BIN URI: BOLD:ACO5135



[Lateral]  
*Lipocephala alma*  
BIN URI: BOLD:AAG3275



[Lateral]  
Mycetophilidae  
BIN URI: BOLD:ACL3869



[Lateral]  
*Phronia*  
BIN URI: BOLD:ACL3868



[Lateral]  
Gnoristinae  
BIN URI: BOLD:ACL1105



[Lateral]  
Mycetophilidae  
BIN URI: BOLD:AAI8585







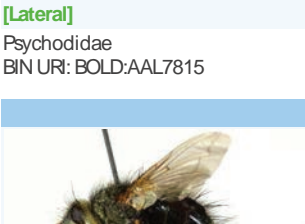






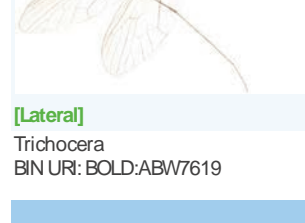
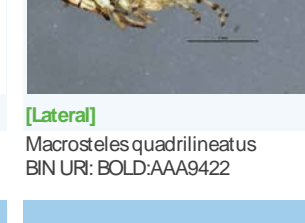
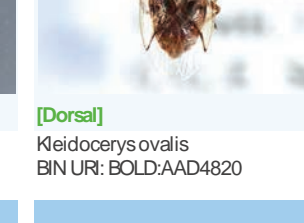
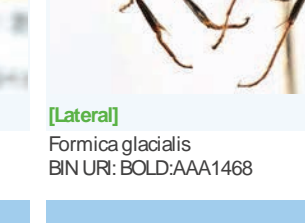
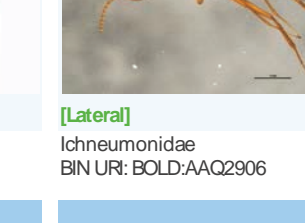





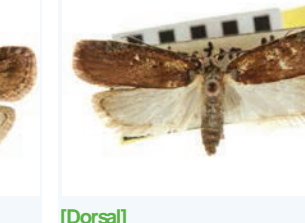


[Lateral]  
Mycetophilidae  
BIN URI: BOLD:AAG4952



[Lateral]  
Mycetophilinae  
BIN URI: BOLD:ACO8543



[Lateral] Opomyzidae BIN URI: BOLD:AAG3915	[Lateral] Megaselia BIN URI: BOLD:ABU5528	[Lateral] Phoridae BIN URI: BOLD:AAG3266	[Lateral] Phoridae BIN URI: BOLD:AAG3326	[Lateral] Phoridae BIN URI: BOLD:AAG3337	[Lateral] Psychodidae BIN URI: BOLD:AAF9318
					
[Lateral] Psychodidae BIN URI: BOLD:AAL7815	[Lateral] Scathophaga BIN URI: BOLD:ACC4873	[Lateral] Siaridae BIN URI: BOLD:AAL7864	[Lateral] Apteromyia claviventris BIN URI: BOLD:AAG7283	[Lateral] Leptocera nalis BIN URI: BOLD:AAF9268	[Lateral] Sphaeroceridae BIN URI: BOLD:ACA4498
					
[Lateral] Epalpus signifer BIN URI: BOLD:ABZ2493	[Lateral] Trichocera BIN URI: BOLD:ABW7619	[Lateral] Macrosteles quadrilineatus BIN URI: BOLD:AAA9422	[Dorsal] Kleidocerys ovalis BIN URI: BOLD:AAD4820	[Lateral] Formica glacialis BIN URI: BOLD:AAA1468	[Lateral] Ichneumonidae BIN URI: BOLD:AAQ2906
					
[Lateral] Ichneumonidae BIN URI: BOLD:ABX5561	[Lateral] Ichneumonidae BIN URI: BOLD:AAU8760	[Lateral] Platygasteridae BIN URI: BOLD:ACM1881	[Lateral] Platygasteridae BIN URI: BOLD:ACI3357	[Dorsal] Agonopterix ciliella BIN URI: BOLD:ACF5176	[Dorsal] Agonopterix walsinghamella BIN URI: BOLD:ACF9151
					
[Lateral] Campaea perlata BIN URI: BOLD:AAA2078	[Dorsal] Eupithecia gelidata BIN URI: BOLD:ABZ0569	[Dorsal] Acleris maccana BIN URI: BOLD:AAA8391	[Lateral] Acleris robinsoniana BIN URI: BOLD:ACU5005	[Dorsal] Acleris hastiana BIN URI: BOLD:AAA9795	[Dorsal] Acleris bowmanana BIN URI: BOLD:AAC3506
