

School Malaise Trap Program

Species Image Library

The images of the species collected in your Malaise trap are shown below. A single representative from each species was selected to be photographed; in some cases, only a damaged specimen was available.



[Dorsal]
Hypselistes jacksoni
BIN URI: BOLD:AAB4233



[Dorsal]
Kaestneria pullata
BIN URI: BOLD:AAB5095



[Dorsal]
Pardosa fuscula
BIN URI: BOLD:AAB3890



[Lateral]
Entomobrya
BIN URI: BOLD:ACL6239



[Lateral]
Entomobrya sp.
BIN URI: BOLD:AAA7249



[Dorsal]
Sericoda quadripunctata
BIN URI: BOLD:AAH2829



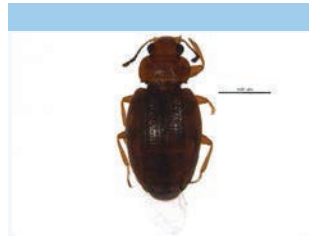
[Dorsal]
Phyllotreta striolata
BIN URI: BOLD:AAP7016



[Dorsal]
Mulsantina hudsonica
BIN URI: BOLD:AAI3237



[Lateral]
Corticarina
BIN URI: BOLD:ACD4236



[Dorsal]
Latridiidae
BIN URI: BOLD:ACU4776



[Lateral]
Catops paramericus
BIN URI: BOLD:AAH3504



[Lateral]
Orsodacne atra
BIN URI: BOLD:AAG4452



[Dorsal]
Sirtidae TW CHU2
BIN URI: BOLD:AAG7258



[Dorsal]
Cypha
BIN URI: BOLD:AQL0159



[Lateral]
Philonthus avibasis
BIN URI: BOLD:AAH0106



[Lateral]
Cerodontha muscina
BIN URI: BOLD:AAG4791



[Lateral]
Egle
BIN URI: BOLD:AAI6225



[Lateral]
Lasiomma nr. *picipes*
BIN URI: BOLD:AAL7525



[Lateral]
Anthomyiidae
BIN URI: BOLD:AAG2452



[Lateral]
Anthomyiidae
BIN URI: BOLD:ACJ1846



[Lateral]
Anthomyiidae
BIN URI: BOLD:ABW1310



[Lateral]
Aulacigaster neoleucopeza
BIN URI: BOLD:AAV0437



[Lateral]
Diptera
BIN URI: BOLD:AAG6745



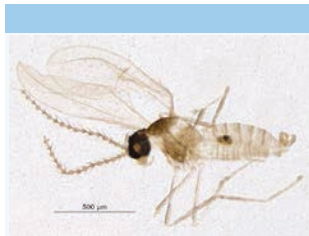
[Lateral]
Protophormia terraenovae
BIN URI: BOLD:AAC9614



[Lateral]
Cecidomyiidae
BIN URI: BOLD:ACC3997



[Lateral]
Cecidomyiidae
BIN URI: BOLD:ACG6197



[Lateral]
Cecidomyiidae
BIN URI: BOLD:ACD8831



[Lateral]
Forcipomyia
BIN URI: BOLD:AAP9052



[Lateral]
Limnophyes
BIN URI: BOLD:ABU5525



[Lateral]
Metriocnemus
BIN URI: BOLD:ABA6408



[Lateral]
Smittia
BIN URI: BOLD:AAB0377



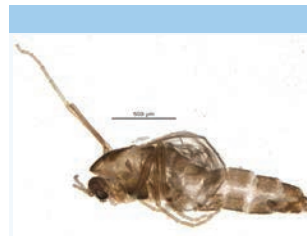
[Lateral]
Orthoclaadiinae
BIN URI: BOLD:AAL7316



[Lateral]
Tanytarsus niger
BIN URI: BOLD:AAV7096



[Lateral]
Orthoclaadiinae
BIN URI: BOLD:AAP5144



[Lateral]
Orthoclaadiinae
BIN URI: BOLD:ACM9165



[Lateral]
Chloropidae
BIN URI: BOLD:AAH4148



[Lateral]

Elachiptera californica
BIN URI: BOLD:AAH4164



[Lateral]

Hybotidae
BIN URI: BOLD:ACU4822



[Lateral]

Muscina sp. 1 AKR
BIN URI: BOLD:AAB8818



[Lateral]

Phoridae
BIN URI: BOLD:AAG3303



[Lateral]

Scathophaga furcata
BIN URI: BOLD:AAH0022



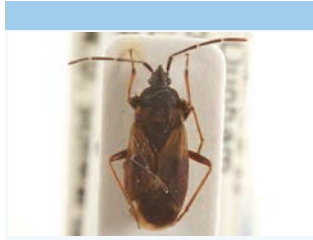
[Dorsal]

Sciaridae
BIN URI: BOLD:AAZ5603



[Lateral]

Empoasca
BIN URI: BOLD:AAG8850



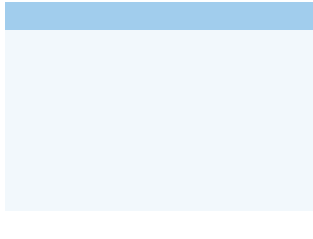
[Dorsal]

Eremocoris borealis
BIN URI: BOLD:AAG8968



[Lateral]

Hymenoptera
BIN URI: BOLD:ACL8401



[Lateral]

Pseudopachychaeta ru ceps
BIN URI: BOLD:AAL7391



[Lateral]

Lauxaniidae
BIN URI: BOLD:AAF6482



[Lateral]

Phaonia
BIN URI: BOLD:ABU9891



[Lateral]

Phoridae
BIN URI: BOLD:AAU5645



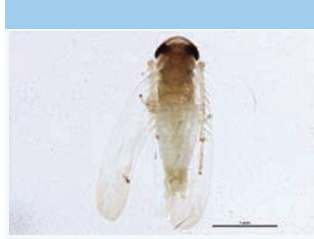
[Lateral]

Lycoriella
BIN URI: BOLD:AAL7869



[Lateral]

Apteromyia claviventris
BIN URI: BOLD:AAG7283



[Dorsal]

Empoasca
BIN URI: BOLD:AAV6736



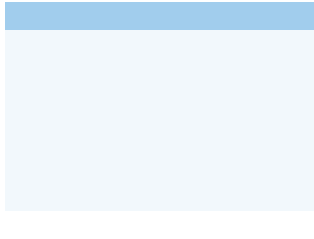
[Dorsal]

Bombus perplexus
BIN URI: BOLD:AAB2150



[Dorsal]

Exaereta cinionella
BIN URI: BOLD:AAD5010



[Lateral]

Philygria obtecta
BIN URI: BOLD:AAG2740



[Lateral]

Helina
BIN URI: BOLD:ACE2958



[Lateral]

Mycetophilidae
BIN URI: BOLD:AAG4945



[Lateral]

Phoridae
BIN URI: BOLD:AAM9363



[Lateral]

Sciaridae
BIN URI: BOLD:AAU6764



[Lateral]

Melangyna lasiophthalma
BIN URI: BOLD:AAK7221



[Dorsal]

Empoasca
BIN URI: BOLD:ACC4400



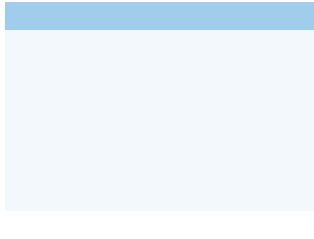
[Lateral]

Platygastriidae
BIN URI: BOLD:ACD3183



[Dorsal]

Semioscopis inornata
BIN URI: BOLD:AAA4335



[Lateral]

Heleomyzidae
BIN URI: BOLD:AAG0366



[Lateral]

Lispocephala tinctinervis
BIN URI: BOLD:AAG1781



[Lateral]

Phoridae
BIN URI: BOLD:AAG3274



[Lateral]

Phoridae
BIN URI: BOLD:AAP6409



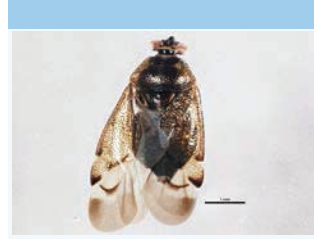
[Lateral]

Scatopsiara
BIN URI: BOLD:AAH3920



[Lateral]

Sphona maculata
BIN URI: BOLD:AAV8847



[Dorsal]

Deraeocoris brevis
BIN URI: BOLD:AAV8281



[Lateral]

Telenomus
BIN URI: BOLD:ABV4994



[Dorsal]

Snoe chambersi
BIN URI: BOLD:ACF2217



[Lateral]

Oecotheta nr. fenestralis
BIN URI: BOLD:AAM7341



[Lateral]

Lispocephala varians
BIN URI: BOLD:AAG1770



[Lateral]

Megaselia
BIN URI: BOLD:AAU6524



[Lateral]

Phoridae
BIN URI: BOLD:ACE4569



[Lateral]

Sciaridae
BIN URI: BOLD:AAP8773



[Dorsal]

Anthocoris musculus
BIN URI: BOLD:AAF9945



[Dorsal]

Lygus lineolaris
BIN URI: BOLD:AAA5803



[Lateral]

Platygastriidae
BIN URI: BOLD:ACU6212



[Dorsal]

Speranza loricaria
BIN URI: BOLD:AAA4974



[Lateral]

Heleomyzidae
BIN URI: BOLD:ABW8559



[Lateral]

Lispocephala erythrocerca
BIN URI: BOLD:AAG1704



[Lateral]

Phoridae
BIN URI: BOLD:AAG3260



[Lateral]

Psychodidae
BIN URI: BOLD:AAP4581



[Lateral]

Sciaridae
BIN URI: BOLD:AAH3915



[Lateral]

Baldutha punctata
BIN URI: BOLD:AAG9374



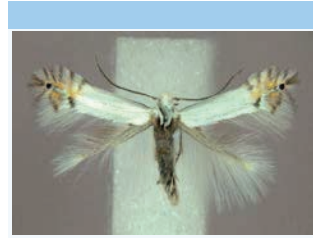
[Lateral]

Psyllidae
BIN URI: BOLD:ACU4466



[Larva]

Tenthredinidae
BIN URI: BOLD:ACA7866



[Dorsal]

Phyllocnistis sp.
BIN URI: BOLD:AAF6337





[Lateral]
Capnia vernalis
BIN URI: BOLD:AAM4447



[Dorsal]
Plecoptera
BIN URI: BOLD:AAD2173



[Dorsal]
Plecoptera
BIN URI: BOLD:ACU7397