

School Malaise Trap Program

Species Image Library

The images of the species collected in your Malaise trap are shown below. A single representative from each species was selected to be photographed; in some cases, only a damaged specimen was available.



[Dorsal]
Agyneta fabra
BIN URI: BOLD:AAE3860



[Dorsal]
Erigone aletris
BIN URI: BOLD:AAD1746



[Dorsal]
Neriene clathrata
BIN URI: BOLD:AAA8358



[Dorsal]
Pardosa fuscula
BIN URI: BOLD:AAB3890



[Dorsal]
Pardosa groenlandica
BIN URI: BOLD:ACE7902



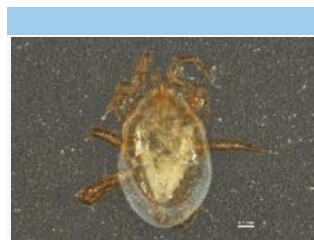
[Dorsal]
Pardosa moesta
BIN URI: BOLD:AAB0863



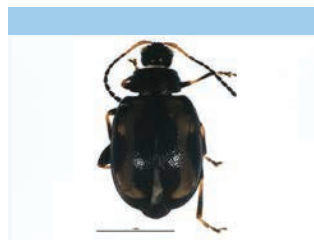
[Dorsal]
Pirata piraticus
BIN URI: BOLD:AAB6784



[Dorsal]
Tetragnatha laboriosa
BIN URI: BOLD:AAA6381



[Dorsal]
Parasitidae
BIN URI: BOLD:AAF9263



[Dorsal]
Phyllotreta striolata
BIN URI: BOLD:AAL5267



[Dorsal]
Psylliodes cucullata
BIN URI: BOLD:ABX3225



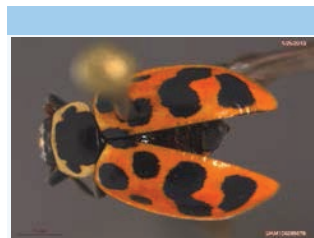
[Dorsal]
Phyllotreta striolata
BIN URI: BOLD:AAP7016



[Dorsal]
Adalia bipunctata
BIN URI: BOLD:AAH3316



[Dorsal]
Coccinella septempunctata
BIN URI: BOLD:AAA8933



[Dorsal]
Hippodamia tredecimpunctata
BIN URI: BOLD:AAX1229



[Lateral]
Corticaria
BIN URI: BOLD:AAN6154



[Dorsal]
Cyphon laevipennis
BIN URI: BOLD:AAG3633



[Dorsal]
ScirtidaeTW CHU2
BIN URI: BOLD:AAG7258



[Lateral]
Amischa analis
BIN URI: BOLD:ABA5313



[Dorsal]
Gabrius CHU1
BIN URI: BOLD:AAG4276



[Lateral]
Chromatomyia puccinelliae
BIN URI: BOLD:ACR6127



[Lateral]
Anisopodidae
BIN URI: BOLD:AAG2000



[Lateral]
Lasiomma
BIN URI: BOLD:AAQ0582



[Lateral]
Anthomyiidae
BIN URI: BOLD:ABW1310



[Dorsal]
Aulacigaster
BIN URI: BOLD:ABV3853



[Lateral]
Aulacigaster neoleucopeza
BIN URI: BOLD:AAV0437



[Lateral]
Cynomyia mortuorum
BIN URI: BOLD:AAB0868



[Lateral]
Phormia regina
BIN URI: BOLD:AAB9140



[Lateral]
Diptera
BIN URI: BOLD:AAG6745



[Lateral]
Cecidomyiidae
BIN URI: BOLD:ACC3997



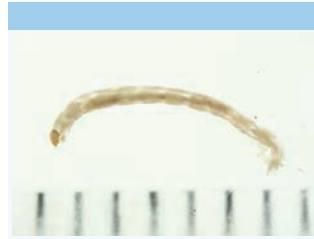
[Lateral]
Cecidomyiidae
BIN URI: BOLD:ACB1079



[Lateral]
Forcipomyia
BIN URI: BOLD:AAP9052



[Lateral]
Chironomus atrella
BIN URI: BOLD:AAG5507



[Lateral]
Chironominae
BIN URI: BOLD:AAI4297



[Lateral]
Orthocladius
BIN URI: BOLD:ACG3299



[Lateral]
Orthocladius
BIN URI: BOLD:ACD1879



[Lateral]

Orthocladus
BIN URI: BOLD:ABX3879



[Lateral]

Eaehiptera sibirica
BIN URI: BOLD:AAH4208



[Lateral]

Philygria oblecta
BIN URI: BOLD:AAG2740



[Lateral]

Muscina sp. 1 AKR
BIN URI: BOLD:AAB8818



[Lateral]

Phoridae
BIN URI: BOLD:AAG3313



[Lateral]

Sciaridae
BIN URI: BOLD:ABA0929



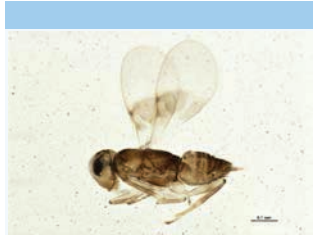
[Dorsal]

Empoasca
BIN URI: BOLD:ABA5763



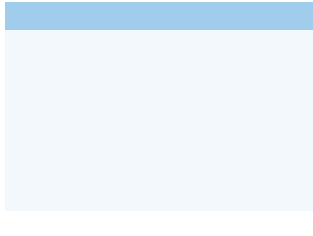
[Lateral]

Nabis americanoferus
BIN URI: BOLD:AAB8143



[Lateral]

Hymenoptera
BIN URI: BOLD:ACC6542



[Dorsal]

Orthocladus
BIN URI: BOLD:AAH4803



[Lateral]

Culiseta minnesotae
BIN URI: BOLD:AAJ7123



[Lateral]

Ocothea nr. fenestralis
BIN URI: BOLD:AAM7341



[Lateral]

Mycetophilidae
BIN URI: BOLD:AAG4905



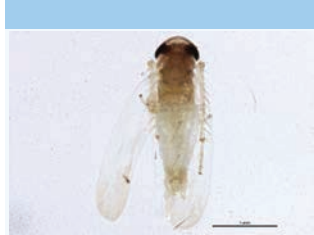
[Lateral]

Phoridae
BIN URI: BOLD:AAU6533



[Lateral]

Sciaridae
BIN URI: BOLD:AAH3941



[Dorsal]

Empoasca
BIN URI: BOLD:AAV6736



[Lateral]

Bombus ternarius
BIN URI: BOLD:AAB5222



[Dorsal]

Synopacma
BIN URI: BOLD:ACD0739



[Lateral]

Smittia
BIN URI: BOLD:ACB0946



[Lateral]

Campsicnemus sp. SEB1
BIN URI: BOLD:AAG9637



[Lateral]

Symplecta
BIN URI: BOLD:AAF9014



[Lateral]

Mycetophilidae
BIN URI: BOLD:AAP2525



[Lateral]

Phoridae
BIN URI: BOLD:AAG3303



[Lateral]

Lycoriella
BIN URI: BOLD:AAL7869



[Dorsal]

Cicadellidae
BIN URI: BOLD:ACU5754



[Lateral]

Aphidius ervi
BIN URI: BOLD:ACI2531



[Dorsal]

Caloptilia fraxinella
BIN URI: BOLD:AAF8249



[Lateral]

Diptera
BIN URI: BOLD:AAM7064



[Lateral]

Dolichopodidae
BIN URI: BOLD:ACF8666



[Lateral]

Lonchoptera bifurcata
BIN URI: BOLD:AAG9974



[Lateral]

Phoridae
BIN URI: BOLD:AAG3274



[Lateral]

Phoridae
BIN URI: BOLD:ABV9330



[Lateral]

Sciaridae
BIN URI: BOLD:AAP8777



[Dorsal]

Kleidocerys ovalis
BIN URI: BOLD:AAD4820



[Lateral]

Eulophidae
BIN URI: BOLD:ACU6501



[Dorsal]

Autographa californica
BIN URI: BOLD:AAB2628



[Lateral]

Orthoclaadiinae
BIN URI: BOLD:ACF8420



[Lateral]

Drosophila
BIN URI: BOLD:AAG8495



[Dorsal]

Diptera
BIN URI: BOLD:AAG1742



[Lateral]

Phoridae
BIN URI: BOLD:AAG3266



[Lateral]

Phoridae
BIN URI: BOLD:AAM9363



[Lateral]

Sphaeroceridae
BIN URI: BOLD:ACP7599



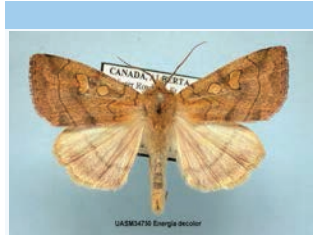
[Dorsal]

Lygus lineolaris
BIN URI: BOLD:AAA5803



[Lateral]

Diadromus subtilicornis
BIN URI: BOLD:AAZ7721



[Dorsal]

Enargia decolor
BIN URI: BOLD:AAA7455



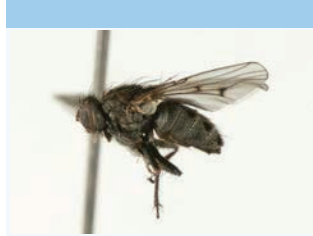
[Lateral]

Chloropidae
BIN URI: BOLD:AAH4148



[Lateral]

Drosophilidae
BIN URI: BOLD:AAH5544



[Lateral]

Lispocephala alma
BIN URI: BOLD:AAE3275



[Lateral]

Phoridae
BIN URI: BOLD:ABU5529



[Lateral]

Phoridae
BIN URI: BOLD:ACG4438



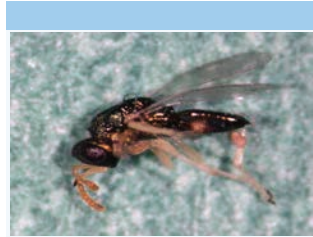
[Lateral]

Dikraneura
BIN URI: BOLD:AAV0227



[Dorsal]

Psallus
BIN URI: BOLD:ACD8693



[Lateral]

Mesopolobus tortricis
BIN URI: BOLD:AAB1881



[Dorsal]

Plutella xylostella
BIN URI: BOLD:AAA1513





[Lateral]

Capnia vernalis
BIN URI: BOLD:AAM4447

Copyright © 2014 BOLD Systems. All rights reserved.