

School Malaise Trap Program

Species Image Library

The images of the species collected in your Malaise trap are shown below. A single representative from each species was selected to be photographed; in some cases, only a damaged specimen was available.



[Dorsal]
Larinioides patagiatus
BIN URI: BOLD:AAA3681



[Dorsal]
Dictyna brevitarsa
BIN URI: BOLD:AAN2653



[Dorsal]
Emblyna annulipes
BIN URI: BOLD:AAB4733



[Dorsal]
Agyneta simplex
BIN URI: BOLD:AAF2396



[Dorsal]
Collinsia plumosa
BIN URI: BOLD:AAM9146



[Dorsal]
Soucron arenarium
BIN URI: BOLD:ACG5076



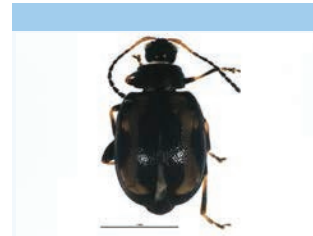
[Dorsal]
Theridion murarium
BIN URI: BOLD:AAC6350



[Lateral]
Entomobrya
BIN URI: BOLD:AQL6239



[Dorsal]
Bradyellus neglectus
BIN URI: BOLD:AAE3092



[Dorsal]
Phyllotreta striolata
BIN URI: BOLD:AAL5267



[Lateral]
Phyllotreta albionica
BIN URI: BOLD:AAH0255



[Dorsal]
Phyllotreta striolata
BIN URI: BOLD:AAP7016



[Dorsal]
Atomaria fuscata
BIN URI: BOLD:ABA9946



[Dorsal]
Latridiidae
BIN URI: BOLD:AAN5905



[Dorsal]
Epuraea
BIN URI: BOLD:ACI8663



[Dorsal]
Cyphon laevipennis
BIN URI: BOLD:AAG3633



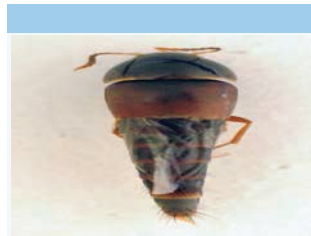
[Lateral]
Amischa analis
BIN URI: BOLD:ABA5313



[Dorsal]
Oxyptoda demissa
BIN URI: BOLD:AAG4315



[Lateral]
Philonthus avibasis
BIN URI: BOLD:AAH0106



[Dorsal]
Sepedophilus marshami
BIN URI: BOLD:AAN9241



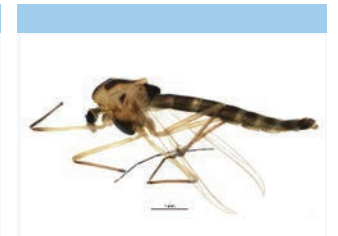
[Dorsal]
Staphylinidae
BIN URI: BOLD:ACU5289



[Lateral]
Cecidomyiidae
BIN URI: BOLD:ACU4733



[Lateral]
Alloodia
BIN URI: BOLD:AAH3022



[Lateral]
Chironomus acidophilus
BIN URI: BOLD:AAJ4295



[Lateral]
Chironomus atrella
BIN URI: BOLD:AAG5507



[Lateral]
Chironominae
BIN URI: BOLD:AAI4297



[Lateral]
Chironomus
BIN URI: BOLD:AAI4298



[Lateral]
Corynoneura
BIN URI: BOLD:AAB0080



[Lateral]
Corynoneura
BIN URI: BOLD:AAB0075



[Lateral]
Corynoneura arctica
BIN URI: BOLD:AAB0079



[Larva]
Cricotopus sp. 7ES
BIN URI: BOLD:AAA5308



[Lateral]
Cricotopus sylvestris
BIN URI: BOLD:AAA5299



[Lateral]
Cricotopus sp. 19ES
BIN URI: BOLD:AAP5141



[Lateral]
Dicrotendipes tritomus
BIN URI: BOLD:AAC0706



[Lateral]
Chironomidae
BIN URI: BOLD:ACA3982



[Lateral]
Limnophyes
BIN URI: BOLD:ACD9436



[Lateral]

Limnophyes
BIN URI: BOLD:ABU5525



[Lateral]

Paratanytarsus
BIN URI: BOLD:ACT8082



[Lateral]

Tanytarsus
BIN URI: BOLD:AAG5486



[Lateral]

Culicidae
BIN URI: BOLD:AAB6943



[Lateral]

Phoridae
BIN URI: BOLD:ACA8600



[Lateral]

Sciaridae
BIN URI: BOLD:AAH3941



[Dorsal]

Cnara pinea
BIN URI: BOLD:AAD4603



[Lateral]

Aphalarinae
BIN URI: BOLD:ABW7690



[Lateral]

Campopleginae
BIN URI: BOLD:ACM2096

[Lateral]

Metriocnemus
BIN URI: BOLD:ABA6408



[Lateral]

Paratanytarsus
BIN URI: BOLD:AAF6899



[Lateral]

Orthoclaadiinae
BIN URI: BOLD:AAG5491



[Lateral]

Culisetia minnesotae
BIN URI: BOLD:AAJ7123



[Lateral]

Phoridae
BIN URI: BOLD:AAU5646



[Lateral]

Sciaridae
BIN URI: BOLD:ACI9109



[Lateral]

Balclutha punctata
BIN URI: BOLD:AAG9374



[Lateral]

Psyllidae
BIN URI: BOLD:AAV0228



[Lateral]

Mymaridae
BIN URI: BOLD:ABX2601

[Lateral]

Chironomidae
BIN URI: BOLD:ACA8828



[Lateral]

Paratanytarsus grimmii
BIN URI: BOLD:AAD1485



[Lateral]

Chironomidae
BIN URI: BOLD:ACM2328



[Lateral]

Oeciothea nr. fenestralis
BIN URI: BOLD:AAM7341



[Lateral]

Phoridae
BIN URI: BOLD:ABA1213



[Lateral]

Sciaridae
BIN URI: BOLD:ACD1220



[Dorsal]

Lygus lineolaris
BIN URI: BOLD:AAA5803



[Lateral]

Peristenus
BIN URI: BOLD:ACM1885



[Lateral]

Telenomus
BIN URI: BOLD:AAG7892

[Lateral]

Micropsectra polita
BIN URI: BOLD:AAC4403



[Lateral]

Psectrocladius barbimanus
BIN URI: BOLD:AAD0484



[Lateral]

Chironomidae
BIN URI: BOLD:AAP3767



[Lateral]

Symplecta
BIN URI: BOLD:AAF9014



[Lateral]

Scathophaga furcata
BIN URI: BOLD:AAH0022



[Lateral]

Sciaridae
BIN URI: BOLD:ACN8242



[Dorsal]

Stenodema trispinosum
BIN URI: BOLD:AAF9956



[Lateral]

Aphidiinae
BIN URI: BOLD:AAK2054



[Lateral]

Telenomus
BIN URI: BOLD:AAQ2659

[Lateral]

Paraphaenocladus cf. nasthecius
BIN URI: BOLD:AAX1168



[Lateral]

Psectrocladius cf. limbatellus
BIN URI: BOLD:ACK7326



[Lateral]

Orthoclaadiinae
BIN URI: BOLD:ACA8343



[Lateral]

Mycetophila sp. CJB7
BIN URI: BOLD:AAG4872



[Lateral]

Bradysia
BIN URI: BOLD:ACE0776



[Lateral]

Sciaridae
BIN URI: BOLD:ACU4606



[Lateral]

Nabis americoferus
BIN URI: BOLD:AAB8143



[Lateral]

Diapriidae
BIN URI: BOLD:ACF7040



[Lateral]

Telenomus
BIN URI: BOLD:ACR6192

[]

Paratanytarsus abiskoensis
BIN URI: BOLD:AAE3677



[Lateral]

Smittia
BIN URI: BOLD:ACB0946



[Lateral]

Anopheles earlei
BIN URI: BOLD:AAD3397



[Lateral]

Phoridae
BIN URI: BOLD:AAG3313



[Lateral]

Lycoriella
BIN URI: BOLD:AAL7869



[Lateral]

Sciaridae
BIN URI: BOLD:AAZ5612



[Lateral]

Craspedolepta
BIN URI: BOLD:AAF8603



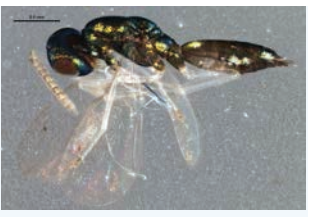
[Lateral]

Eulophidae
BIN URI: BOLD:ACL2209



[Lateral]

Scelioninae
BIN URI: BOLD:ACD1506



[Lateral]
Pteromalidae
BIN URI: BOLD:ACM1360



[Lateral]
Pteromalidae
BIN URI: BOLD:ACJ4069



[Lateral]
Pteromalidae
BIN URI: BOLD:ACJ7143



[Dorsal]
Plutella xylostella
BIN URI: BOLD:AAA1513