

School Malaise Trap Program

Species Image Library

The images of the species collected in your Malaise trap are shown below. A single representative from each species was selected to be photographed; in some cases, only a damaged specimen was available.



[Dorsal]
Ceraticelus atriceps
BIN URI: BOLD:AAI3701



[Dorsal]
Dismodicus decemoculatus
BIN URI: BOLD:AAA9584



[Dorsal]
Grammonota angusta
BIN URI: BOLD:AAD1498



[Dorsal]
Ptyohyphantes alticeps
BIN URI: BOLD:ACO2740



[Dorsal]
Ptyohyphantes cristatus
BIN URI: BOLD:ACF0617



[Dorsal]
Leptus
BIN URI: BOLD:ACE1791



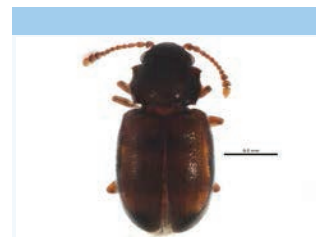
[Lateral]
Entomobrya
BIN URI: BOLD:ACL6239



[Lateral]
Collembola
BIN URI: BOLD:ACD2633



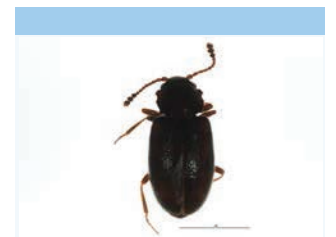
[Lateral]
Syneta simplex simplex
BIN URI: BOLD:AAP7847



[Dorsal]
Cryptophagidae
BIN URI: BOLD:ACU6317



[Dorsal]
Cryptophagidae
BIN URI: BOLD:ACK3946



[Dorsal]
Cryptophagidae
BIN URI: BOLD:ACD9453



[Dorsal]
Corticaria
BIN URI: BOLD:ABA9033



[Dorsal]
Corticaria gibbosa
BIN URI: BOLD:AAI8935



[Dorsal]
Latridius
BIN URI: BOLD:ACD9541



[Dorsal]
Cyphon laevipennis
BIN URI: BOLD:AAG3633



[Dorsal]
Dendrophagus cygnaei
BIN URI: BOLD:ACA9015



[Lateral]
Staphylinidae
BIN URI: BOLD:ACU5806



[Dorsal]
Staphylinidae
BIN URI: BOLD:ACU6301



[Lateral]
Sylvicola fuscatus
BIN URI: BOLD:AAM6391



[Lateral]
Aulacigaster neoleucepeza
BIN URI: BOLD:AAV0437



[Lateral]
Cecidomyiidae
BIN URI: BOLD:ACD8889



[Lateral]
Cecidomyiidae
BIN URI: BOLD:ACL9013



[Lateral]
Cecidomyiidae
BIN URI: BOLD:ACU5983



[Lateral]
Cecidomyiidae
BIN URI: BOLD:ACU7403



[Lateral]
Cecidomyiidae
BIN URI: BOLD:ACU5796



[Lateral]
Cecidomyiidae
BIN URI: BOLD:ACU5616



[Lateral]
Limnophyes schnelli
BIN URI: BOLD:AAC9278



[Lateral]
Chironomidae
BIN URI: BOLD:ACC1272



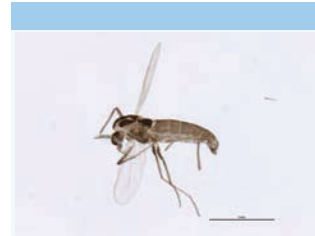
[Lateral]
Limnophyes
BIN URI: BOLD:AAN5339



[Lateral]
Limnophyes
BIN URI: BOLD:ABU5525



[Lateral]
Micropsectra polita
BIN URI: BOLD:AAC4403



[Lateral]
Paraphaenocladus impensus
BIN URI: BOLD:AAI2659



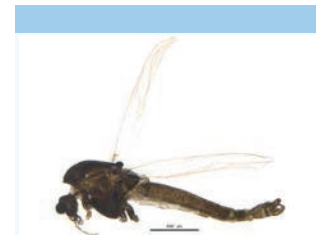
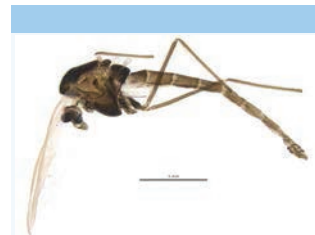
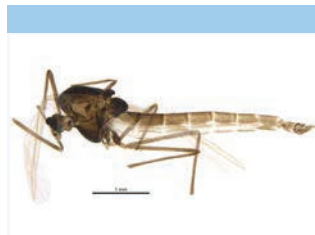
[Ventral]
Procladius
BIN URI: BOLD:AAN5386



[Lateral]
Psectrotanypus sp. ES01
BIN URI: BOLD:AAG0314



[Lateral]
Smittia
BIN URI: BOLD:ACE1110



[Lateral]

Chironominae
BIN URI: BOLD:ACU6682



[Lateral]

Heleomyzidae
BIN URI: BOLD:AAG0366



[Lateral]

Mycetophilidae
BIN URI: BOLD:ACI2886



[Lateral]

Mycetophilidae
BIN URI: BOLD:ABW8520



[Lateral]

Phoridae
BIN URI: BOLD:ABX8427



[Lateral]

Lycoriella
BIN URI: BOLD:AAL7874



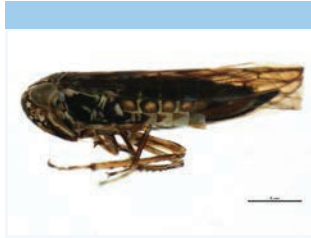
[Lateral]

Sphaeroceridae
BIN URI: BOLD:ACA8622



[Lateral]

Empoasca
BIN URI: BOLD:AAG8850



[Lateral]

Idiocerus obispanus
BIN URI: BOLD:AAV0248

[Lateral]

Chironominae
BIN URI: BOLD:ACU5786



[Lateral]

Suillia apicalis
BIN URI: BOLD:ACU5135



[Lateral]

Mycetophilidae
BIN URI: BOLD:ACU6371



[Lateral]

Phoridae
BIN URI: BOLD:AAG3274



[Lateral]

Phoridae
BIN URI: BOLD:AAP6409



[Lateral]

Lycoriella
BIN URI: BOLD:AAL7869



[Lateral]

Sphaeroceridae
BIN URI: BOLD:AAV0767



[Dorsal]

Empoasca
BIN URI: BOLD:ABA5763

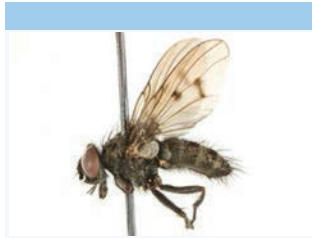


[Lateral]

Psyllidae
BIN URI: BOLD:ACU7137

[Lateral]

Chironominae
BIN URI: BOLD:ACU6795



[Lateral]

Helina
BIN URI: BOLD:ACB2958



[Lateral]

Mycetophilidae
BIN URI: BOLD:ACG6168



[Lateral]

Megaselia
BIN URI: BOLD:ABX8135



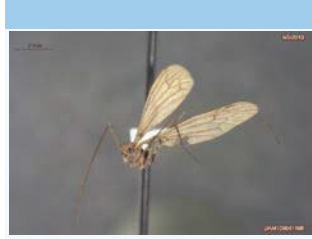
[Lateral]

Phoridae
BIN URI: BOLD:ACR9422



[Lateral]

Scatopsiara
BIN URI: BOLD:AAH3920



[Lateral]

Trichocera japonica
BIN URI: BOLD:ACG2202



[Lateral]

Empoasca
BIN URI: BOLD:AAV0165



[Lateral]

Aleiodes
BIN URI: BOLD:ABX5336

[Lateral]

Chironomidae
BIN URI: BOLD:ACC1160



[Lateral]

Boletina sp. CJB01
BIN URI: BOLD:AAG4877



[Lateral]

Mycetophilidae
BIN URI: BOLD:ACI6574



[Lateral]

Phoridae
BIN URI: BOLD:AAG3260



[Lateral]

Phoridae
BIN URI: BOLD:ACA8491



[Lateral]

Scatopsiara
BIN URI: BOLD:ACF4135



[Lateral]

Trichocera
BIN URI: BOLD:ABW7619



[Lateral]

Empoasca
BIN URI: BOLD:AAV0226



[Lateral]

Cynipidae
BIN URI: BOLD:ACL6439

[Lateral]

Orthocladiinae
BIN URI: BOLD:ACU6961



[Lateral]

Mycetophilidae
BIN URI: BOLD:AAU4986



[Lateral]

Mycetophila sp. CJB7
BIN URI: BOLD:AAG4872



[Lateral]

Phoridae
BIN URI: BOLD:AAG3266



[Lateral]

Psychodidae
BIN URI: BOLD:AAF9318



[Lateral]

Sciaridae
BIN URI: BOLD:ACB9445



[Lateral]

Trichoceridae
BIN URI: BOLD:ACI4060



[Dorsal]

Empoasca
BIN URI: BOLD:AAV0166



[Lateral]

Ophion bilineatus
BIN URI: BOLD:AAG8323

[Lateral]

Drosophila
BIN URI: BOLD:AAA8455



[Lateral]

Mycetophilidae
BIN URI: BOLD:AAP2530



[Lateral]

Mycetophilidae
BIN URI: BOLD:ACC1564



[Lateral]

Megaselia
BIN URI: BOLD:ACF7441



[Lateral]

Scathophaga furcata
BIN URI: BOLD:AAH0022



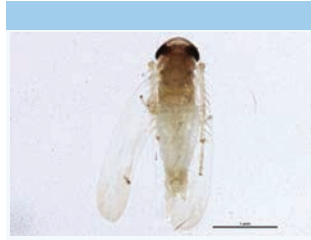
[Lateral]

Simuliidae
BIN URI: BOLD:AAZ2247



[Lateral]

Baldutha punctata
BIN URI: BOLD:AAG9374



[Dorsal]

Empoasca
BIN URI: BOLD:AAZ6736

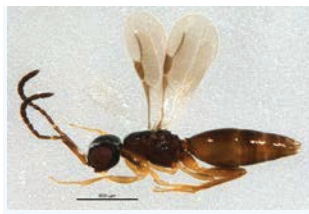


[Lateral]

Tranosema
BIN URI: BOLD:ACL2701



[Lateral]
Orthocentrus jft09
BIN URI: BOLD:AAB1188



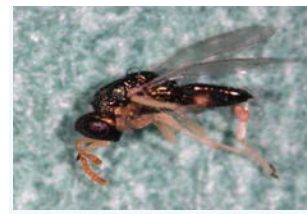
[Lateral]
Megaspilidae
BIN URI: BOLD:ACG4673



[Lateral]
Platygastriidae
BIN URI: BOLD:ACU5044



[Lateral]
Platygastriidae
BIN URI: BOLD:ACU4510



[Lateral]
Mesopolobus tortricis
BIN URI: BOLD:AAB1881



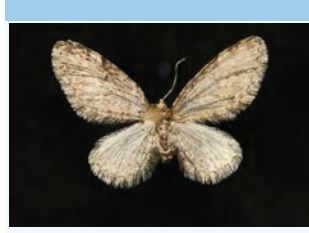
[Dorsal]
Exaeretia cini onella
BIN URI: BOLD:AAD5010



[Dorsal]
Snoe chambersi
BIN URI: BOLD:ACF2217



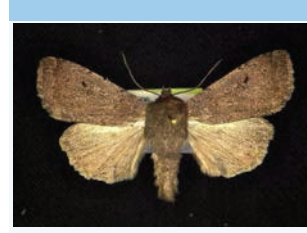
[Lateral]
Anticlea vasilata
BIN URI: BOLD:AAA7929



[Dorsal]
Eupithecia annulata
BIN URI: BOLD:AAA4420



[Dorsal]
Phyllocnistis populiella
BIN URI: BOLD:AAA8924



[Dorsal]
Graphiphora augur
BIN URI: BOLD:ACF0936



[Dorsal]
Acleris cornana
BIN URI: BOLD:ABZ7431



[Dorsal]
Acleris forbesana
BIN URI: BOLD:AAB0890



[Dorsal]
Acleris maccana
BIN URI: BOLD:AAA8391



[Lateral]
Hemerobius ovalis
BIN URI: BOLD:AAG0894



[Lateral]
Hemerobius
BIN URI: BOLD:ACM1524



[Lateral]
Wesmaelius longifrons
BIN URI: BOLD:AAP4512



[Dorsal]
Taeniothrips
BIN URI: BOLD:AAN9106