

# School Malaise Trap Program

## Species Image Library

The images of the species collected in your Malaise trap are shown below. A single representative from each species was selected to be photographed; in some cases, only a damaged specimen was available.



[Dorsal]  
*Cubiona riparia*  
BIN URI: BOLD:AAC8797



[Dorsal]  
*Bathypantes brevis*  
BIN URI: BOLD:AAC5851



[Dorsal]  
*Lophomma depressum*  
BIN URI: BOLD:AAP3550



[Dorsal]  
*Sciastes truncatus*  
BIN URI: BOLD:AAE9280



[Lateral]  
*Entomobrya*  
BIN URI: BOLD:ACL6239



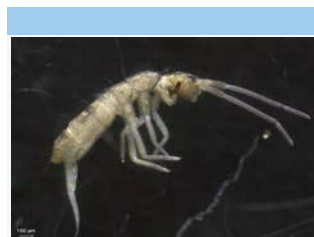
[Dorsal]  
*Lepidocyrtus*  
BIN URI: BOLD:ACM2009



[Lateral]  
*Lepidocyrtus*  
BIN URI: BOLD:ACF1714



[Lateral]  
*Entomobrya* sp.  
BIN URI: BOLD:AAA7249



[Lateral]  
*Pogonognathellus avescens*  
BIN URI: BOLD:AAA7248



[Lateral]  
*Cimberis pallipennis*  
BIN URI: BOLD:ABV9508



[Lateral]  
*Cyphon obscurus*  
BIN URI: BOLD:AAH0074



[Dorsal]  
*Cyphon laevipennis*  
BIN URI: BOLD:AAG3633



[Dorsal]  
*Cyphon*  
BIN URI: BOLD:ACN3059



[Dorsal]  
*Cyphon*  
BIN URI: BOLD:ACN7144



[Lateral]  
*Atheta*  
BIN URI: BOLD:ABW2847



[Lateral]  
*Gabrius appendiculatus*  
BIN URI: BOLD:ABW7167



[Dorsal]  
*Oxyptoda opaca*  
BIN URI: BOLD:AAH1581



[Lateral]  
Diptera  
BIN URI: BOLD:AAA3453



[Lateral]  
*Cynomya mortuorum*  
BIN URI: BOLD:AAB0868



[Lateral]  
Diptera  
BIN URI: BOLD:AAG6745



[Lateral]  
*Pollenia vagabunda*  
BIN URI: BOLD:AAH3040



[Lateral]  
*Pollenia labialis*  
BIN URI: BOLD:AAI2765



[Lateral]  
*Pollenia rudis*  
BIN URI: BOLD:AAP2825



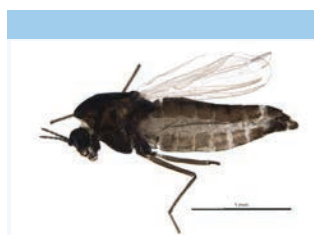
[Lateral]  
Cecidomyiidae  
BIN URI: BOLD:ACM5965



[Lateral]  
*Gymnometrioctenus brumalis*  
BIN URI: BOLD:AAP6873



[Lateral]  
*Gymnometrioctenus*  
BIN URI: BOLD:AAI1981



[Lateral]  
*Limnophyes*  
BIN URI: BOLD:ACL6179



[Lateral]  
*Limnophyes*  
BIN URI: BOLD:ABV1190



[Lateral]  
*Limnophyes*  
BIN URI: BOLD:ABU5525



[Lateral]  
*Smittia edwardsi*  
BIN URI: BOLD:AAF4817



[Lateral]  
Chironomidae  
BIN URI: BOLD:ACF8488



[Lateral]  
Chironomidae  
BIN URI: BOLD:ACF9312



[Lateral]  
Orthocladiinae  
BIN URI: BOLD:ACL2440



[Lateral]  
Chironomidae  
BIN URI: BOLD:ACF6271



[Lateral]  
*Echiptera sibirica*  
BIN URI: BOLD:AAH4208



[Lateral]  
*Eriolus nana*  
BIN URI: BOLD:AAH4175





[Lateral]

Campsicnemus alexanderi  
BIN URI: BOLD:AAG9638



[Lateral]

Mycetophilidae  
BIN URI: BOLD:ABW1532



[Lateral]

Megaselia  
BIN URI: BOLD:AAU6524



[Lateral]

Phoridae  
BIN URI: BOLD:ACG4438



[Lateral]

Sphaeroceridae  
BIN URI: BOLD:AAN6406



[Lateral]

Psyllidae  
BIN URI: BOLD:AAV0228



[Lateral]

Hymenoptera  
BIN URI: BOLD:AAD8806



[Lateral]

Allocapnia nivicola  
BIN URI: BOLD:AAC5705



[Lateral]

Allocapnia nivicola  
BIN URI: BOLD:AAC5705

[Lateral]

Drosophila  
BIN URI: BOLD:AAL1550



[Lateral]

Phoridae  
BIN URI: BOLD:AAL9079



[Lateral]

Phoridae  
BIN URI: BOLD:AAM7996



[Lateral]

Lycoriella castanescens  
BIN URI: BOLD:ABA1215



[Lateral]

Spelobia clunipes  
BIN URI: BOLD:AAG7312



[Lateral]

Andrena frigida  
BIN URI: BOLD:ACU6219



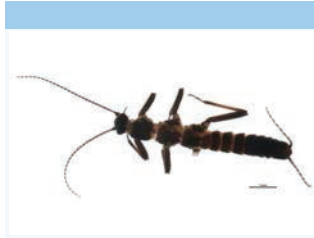
[Lateral]

Ophion  
BIN URI: BOLD:AAG7774



[Dorsal]

Agonopterix argillacea  
BIN URI: BOLD:ACF4423



[Dorsal]

Paracpnia angulata  
BIN URI: BOLD:AAD5370



[Lateral]

Heleomyza serrata  
BIN URI: BOLD:ABX8716



[Lateral]

Phoridae  
BIN URI: BOLD:AAG3274



[Lateral]

Phoridae  
BIN URI: BOLD:AAG3316



[Lateral]

Sciariidae  
BIN URI: BOLD:ABW5541



[Lateral]

Cercopidae  
BIN URI: BOLD:AAG8827



[Lateral]

Peristenus  
BIN URI: BOLD:ACM5534



[Lateral]

Campopleginae  
BIN URI: BOLD:ACU4400



[Dorsal]

Agonopterix walsinghamella  
BIN URI: BOLD:ACF9151



[Lateral]

Capniidae  
BIN URI: BOLD:ACU4240



[Lateral]

Heleomyzidae  
BIN URI: BOLD:AAG0366



[Lateral]

Phoridae  
BIN URI: BOLD:AAG3340



[Lateral]

Phoridae  
BIN URI: BOLD:ACL2506



[Lateral]

Apteromyia claviventris  
BIN URI: BOLD:AAG7283



[Lateral]

Empoasca  
BIN URI: BOLD:AAV6744



[Lateral]

Trichopria  
BIN URI: BOLD:ABA5937



[Lateral]

Ichneumonidae  
BIN URI: BOLD:AAU8760



[Dorsal]

Caloptilia alnivorella  
BIN URI: BOLD:AAB8564



[Lateral]

Strophopteryx fasciata  
BIN URI: BOLD:AAB8564



[Lateral]

Heleomyzidae  
BIN URI: BOLD:AAG0464



[Lateral]

Phoridae  
BIN URI: BOLD:AAG3266



[Lateral]

Phoridae  
BIN URI: BOLD:ACM1336



[Lateral]

Leptocera nalis  
BIN URI: BOLD:AAF9268



[Dorsal]

Lygus lineolaris  
BIN URI: BOLD:AAA5803



[Lateral]

Eulophidae  
BIN URI: BOLD:ACF8509



[Lateral]

Tersilochinae  
BIN URI: BOLD:ACU4576



[Dorsal]

Mompha unifasciella  
BIN URI: BOLD:AAC2120



[Lateral]

Taeniopteryx burksi  
BIN URI: BOLD:AAC0608



[Lateral]

Muscina pascuorum  
BIN URI: BOLD:AAG1714



[Lateral]

Megaselia  
BIN URI: BOLD:ABX8135



[Lateral]

Phoridae  
BIN URI: BOLD:ACF4361



[Lateral]

Rachispoda frosti  
BIN URI: BOLD:ACM3438



[Lateral]

Nabis americanoferus  
BIN URI: BOLD:AAB8143



[Plate]

Lasioglossum versans  
BIN URI: BOLD:ABZ6180



[Lateral]

Platygastridae  
BIN URI: BOLD:ACU4596



