

School Malaise Trap Program

Species Image Library

The images of the species collected in your Malaise trap are shown below. A single representative from each species was selected to be photographed; in some cases, only a damaged specimen was available.



[Dorsal]

Steatoda bipunctata
BIN URI: BOLD:AAD4292



[Lateral]

Diptera
BIN URI: BOLD:AAG6745



[Lateral]

Pollenia vagabunda
BIN URI: BOLD:AAH3040



[Lateral]

Pollenia rudis
BIN URI: BOLD:AAH3035



[Lateral]

Protophormia terraenovae
BIN URI: BOLD:AAC9614



[]

Orthocladius mallochii
BIN URI: BOLD:AAE2644



[Lateral]

Diamesa
BIN URI: BOLD:AAL0863



[Lateral]

Chironomidae
BIN URI: BOLD:ABA6465



[Lateral]

Heleomyza serrata
BIN URI: BOLD:ABX8716



[Lateral]

Lispocephala alma
BIN URI: BOLD:AAE3275



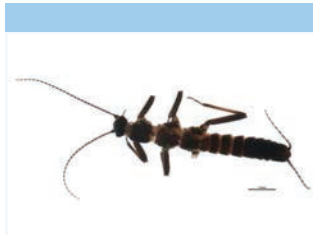
[Lateral]

Mycetophilidae
BIN URI: BOLD:AAU4888



[Dorsal]

Idiocerus
BIN URI: BOLD:AAZ3300



[Dorsal]

Paracapnia angulata
BIN URI: BOLD:AAD5370