

School Malaise Trap Program

Species Image Library

The images of the species collected in your Malaise trap are shown below. A single representative from each species was selected to be photographed; in some cases, only a damaged specimen was available.



[Lateral]
Anisopodidae
BIN URI: BOLD:AAG2000



[Lateral]
Diptera
BIN URI: BOLD:AAG6745



[Lateral]
Cecidomyiidae
BIN URI: BOLD:ACJ4884



[Lateral]
Gymnometrioctonus brumalis
BIN URI: BOLD:AAP6873



[Lateral]
Chironomidae
BIN URI: BOLD:ACU5397



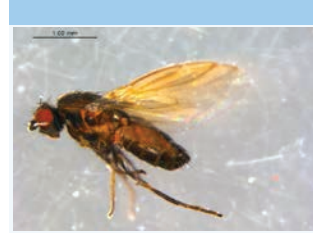
[Lateral]
Lonchoptera bifurcata
BIN URI: BOLD:AAG9974



[Lateral]
Mycetophilidae
BIN URI: BOLD:ABW1532



[Lateral]
Bradysia di ormis
BIN URI: BOLD:AAV1295



[Lateral]
Leptocera nalis
BIN URI: BOLD:AAF9268



[Lateral]
Psyllidae
BIN URI: BOLD:ACF6530



[Lateral]
Trichopria
BIN URI: BOLD:ABA5937



[Lateral]
Lasius neoniger
BIN URI: BOLD:AAB9126



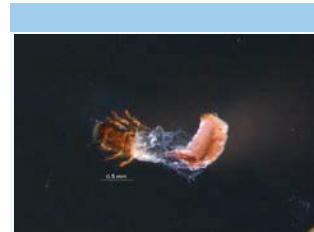
[Dorsal]
Agonopterix argillacea
BIN URI: BOLD:ACF4387



[Dorsal]
Eupsilia vinulenta
BIN URI: BOLD:AAB4640



[Lateral]
Allocapnia minima
BIN URI: BOLD:AAB2625



[Dorsal]
Apatania
BIN URI: BOLD:ABU5586