

School Malaise Trap Program

Species Image Library

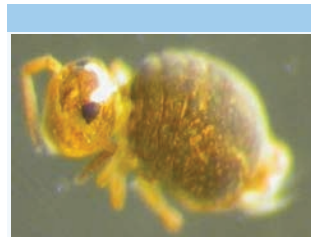
The images of the species collected in your Malaise trap are shown below. A single representative from each species was selected to be photographed; in some cases, only a damaged specimen was available.



[Dorsal]
Cubiona pallidula
BIN URI: BOLD:AAI4087



[Lateral]
Entomobrya
BIN URI: BOLD:AQL6239



[Dorsal]
Gisinianus ammeolus
BIN URI: BOLD:ACT8764



[Lateral]
Pollenia vagabunda
BIN URI: BOLD:AAH3040



[Lateral]
Cecidomyiidae
BIN URI: BOLD:ACK9889



[Lateral]
Bryophaenocladus sp. 8ES
BIN URI: BOLD:AAG1021



[Lateral]
Chironomidae
BIN URI: BOLD:ABU5526



[Lateral]
Chironomidae
BIN URI: BOLD:ABA6465



[Lateral]
Ephyridae
BIN URI: BOLD:AAU6743



[Lateral]
Muscina levida
BIN URI: BOLD:AAB8817



[Lateral]
Phoridae
BIN URI: BOLD:AAG3303



[Lateral]
Trichocera
BIN URI: BOLD:ACF7745