

# School Malaise Trap Program

## Species Image Library

The images of the species collected in your Malaise trap are shown below. A single representative from each species was selected to be photographed; in some cases, only a damaged specimen was available.



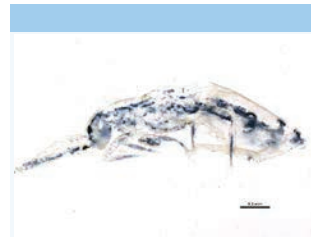
[Dorsal]  
*Cubiona pallidula*  
BIN URI: BOLD:AAI4087



[Dorsal]  
*Agelenopsis utahana*  
BIN URI: BOLD:AAB0090



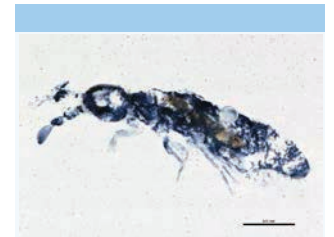
[Dorsal]  
*Erigone aletris*  
BIN URI: BOLD:AAD1746



[Lateral]  
Entomobryidae  
BIN URI: BOLD:ACD9444



[Lateral]  
Entomobryidae  
BIN URI: BOLD:AAF7756



[Lateral]  
Collembola  
BIN URI: BOLD:ACI5504



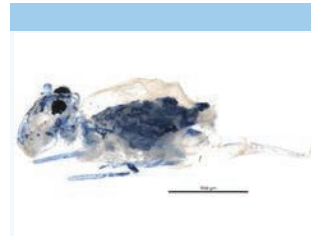
[Lateral]  
Collembola  
BIN URI: BOLD:ACU6668



[Lateral]  
Collembola  
BIN URI: BOLD:ACC0359



[Lateral]  
Collembola  
BIN URI: BOLD:ACT5588



[Lateral]  
Symphyleona  
BIN URI: BOLD:ACU6131



[Lateral]  
*Clambus simsoni*  
BIN URI: BOLD:AAQ0037



[Dorsal]  
*Aridius nodifer*  
BIN URI: BOLD:AAQ0516



[Dorsal]  
*Forcula auricularia-B*  
BIN URI: BOLD:AAE0456



[Lateral]  
*Chromatomyia*  
BIN URI: BOLD:ACP9372



[Lateral]  
Agromyza  
BIN URI: BOLD:AAU9505



[Lateral]  
*Pegomya winthemi*  
BIN URI: BOLD:AAG1783



[Lateral]  
*Anthomyia pluvialis*  
BIN URI: BOLD:AAQ0583



[Lateral]  
Anthomyiidae  
BIN URI: BOLD:ACU6434



[Lateral]  
*Contarinia*  
BIN URI: BOLD:ACB8904



[Lateral]  
Cecidomyiidae  
BIN URI: BOLD:ACB9225



[Lateral]  
Cecidomyiidae  
BIN URI: BOLD:AAH3617



[Lateral]  
Cecidomyiidae  
BIN URI: BOLD:ACI4659



[Lateral]  
Ceratopogonidae  
BIN URI: BOLD:AAN5169



[Lateral]  
Ceratopogonidae  
BIN URI: BOLD:ACU6831



[Lateral]  
*Bryophaenocladus* sp. 8ES  
BIN URI: BOLD:AAG1021



[Lateral]  
*Limnophyes minimus*  
BIN URI: BOLD:AAA8204



[Lateral]  
*Limnophyes*  
BIN URI: BOLD:ABU5525



[Lateral]  
*Limnophyes*  
BIN URI: BOLD:AAN5339



[Dorsal]  
*Microtendipes rydalensis* grp.  
BIN URI: BOLD:AAQ2778



[Lateral]  
Chironomidae  
BIN URI: BOLD:AAG1019



[Lateral]  
*Smittia* sp. 16ES  
BIN URI: BOLD:AAB0375



[Lateral]  
Chironomidae  
BIN URI: BOLD:ACU6701



[Lateral]  
Chironomidae  
BIN URI: BOLD:ACB9194



[Lateral]  
Orthoclaadiinae  
BIN URI: BOLD:ACP8287



[Lateral]  
Chironomidae  
BIN URI: BOLD:AAM6290



[Lateral]  
Empididae  
BIN URI: BOLD:AAQ0825



[Lateral]

Suillia  
BIN URI: BOLD:AAG0466



[Lateral]

Hybotidae  
BIN URI: BOLD:ACU6575



[Lateral]

Mydaea canescens  
BIN URI: BOLD:ACC3527



[Lateral]

Phoridae  
BIN URI: BOLD:AAG3359



[Lateral]

Phoridae  
BIN URI: BOLD:ACU6891



[Lateral]

Psychodinae  
BIN URI: BOLD:ACD1259



[Lateral]

Psychodidae  
BIN URI: BOLD:ACC1296



[Lateral]

Scathophaga furcata  
BIN URI: BOLD:AAH0022



[Lateral]

Sciaridae  
BIN URI: BOLD:AAV1366



[Lateral]

Sciaridae  
BIN URI: BOLD:AAM9252



[Lateral]

Sciaridae  
BIN URI: BOLD:AAP6467



[Lateral]

Lycoriella  
BIN URI: BOLD:ACP3565



[Lateral]

Sciaridae  
BIN URI: BOLD:ACP9604



[Lateral]

Sciaridae  
BIN URI: BOLD:ACI6469



[Lateral]

Sciaridae  
BIN URI: BOLD:ABU5521



[Lateral]

Sciaridae  
BIN URI: BOLD:ACB9445



[Lateral]

Sciaridae  
BIN URI: BOLD:AAQ2557



[Lateral]

Sciaridae  
BIN URI: BOLD:ACB9102



[Lateral]

Sciaridae  
BIN URI: BOLD:ACU7490



[Lateral]

Sciaridae  
BIN URI: BOLD:ACU7164



[Lateral]

Alebra wahlbergi  
BIN URI: BOLD:ACK8996



[Lateral]

Empoasca  
BIN URI: BOLD:ACC4174



[Lateral]

Cicadellidae  
BIN URI: BOLD:AAV0262



[Dorsal]

Campyloneura virgula  
BIN URI: BOLD:AAD6689



[Dorsal]

Aphalarinae  
BIN URI: BOLD:ACP7833



[Lateral]

Peristenus  
BIN URI: BOLD:ACU6459



[Lateral]

Praon humulaphidis  
BIN URI: BOLD:AAV3315



[Lateral]

Praon  
BIN URI: BOLD:AAH7424



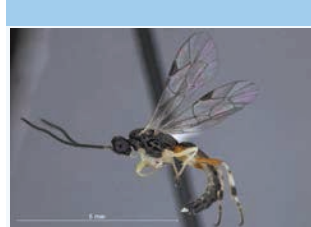
[Lateral]

Trioxys  
BIN URI: BOLD:ABA8091



[Lateral]

Alysinae  
BIN URI: BOLD:ACU6954



[Lateral]

Aphidiinae  
BIN URI: BOLD:AAU8954



[Lateral]

Aphelopus atratus  
BIN URI: BOLD:ACH0446



[Lateral]

Eulophidae  
BIN URI: BOLD:AAU9365



[Lateral]

Lasioglossum cressonii  
BIN URI: BOLD:AAA5973



[Lateral]

Pantisarthrus  
BIN URI: BOLD:ACI7347



[Lateral]

Ichneumonidae  
BIN URI: BOLD:ACI9207



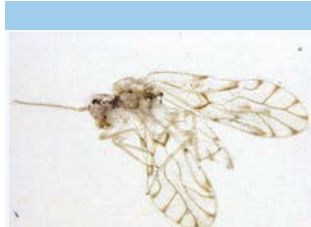
[Dorsal]

Leucoptera laburnella  
BIN URI: BOLD:AAK9163



[Dorsal]

Sigmella microtheriella  
BIN URI: BOLD:AAI0007



[Dorsal]

Epinothia subocellana  
BIN URI: BOLD:AAB8744



[Dorsal]

Eucalantica polita  
BIN URI: BOLD:AAB6103



[Lateral]

Hemerobius stigma  
BIN URI: BOLD:AAG0891



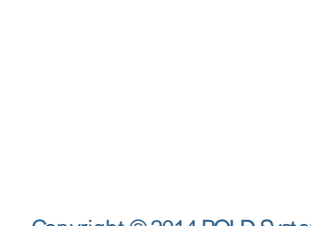
[Lateral]

Valenzuela  
BIN URI: BOLD:ACR3866



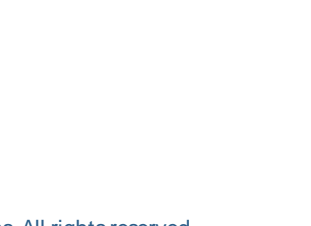
[Lateral]

Psocoptera  
BIN URI: BOLD:AAV6680



[Lateral]

Psocoptera  
BIN URI: BOLD:AAP2620



[Dorsal]

Taeniothrips inconsequens  
BIN URI: BOLD:ACC0651

