

Image Library - SEARCH: Process ids(128 ids)

Print

Parameters

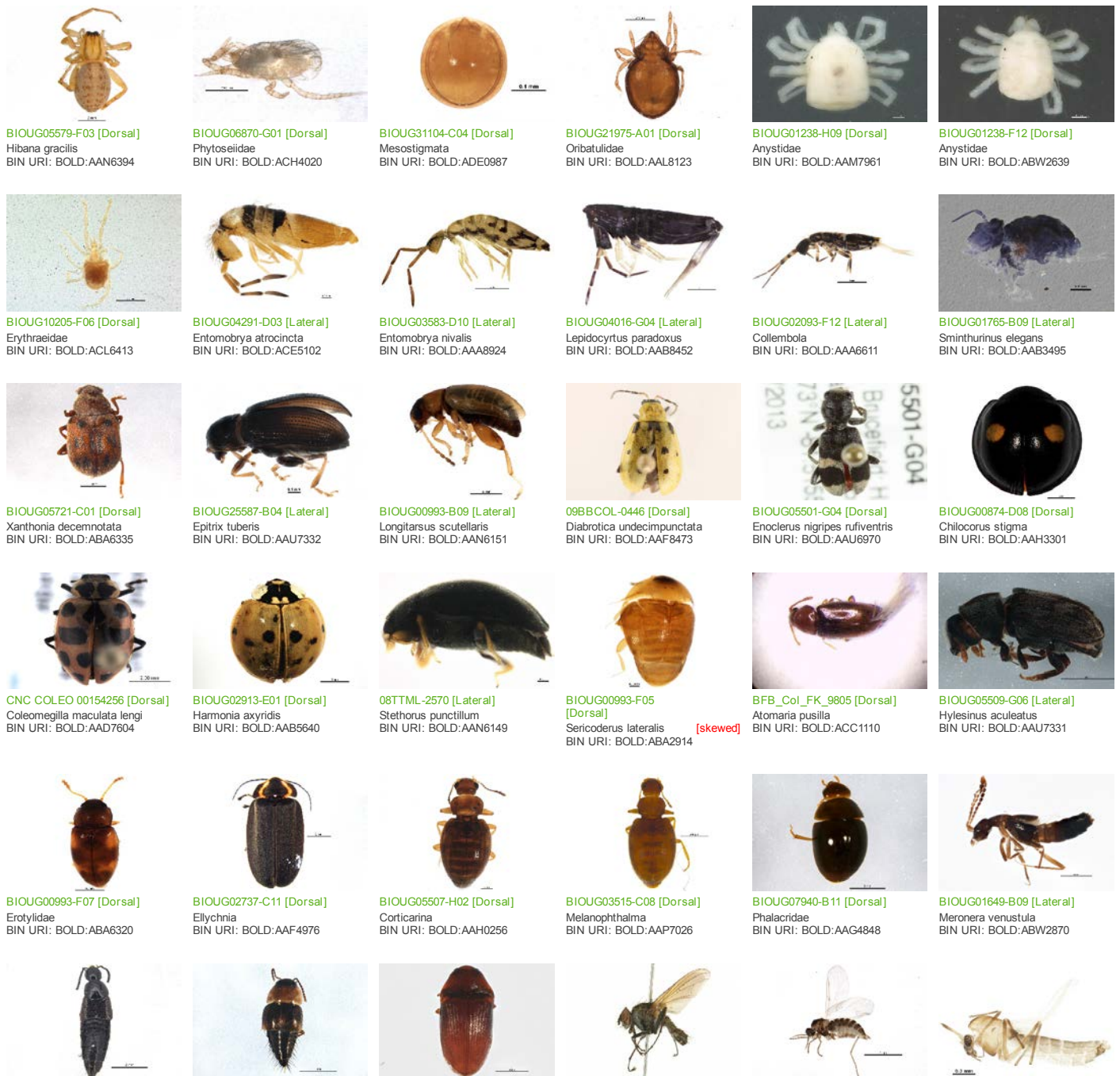
Records Included: All records
 Filter Image by Orientation: None
 Aspect Ratio: Normalized 3:2

Result Summary

Total Records: 128

Re-render images: per row

5000 Records Per Page - Pages: 1



CCDB-23508-F01 [Dorsal]
Philonthus carbonarius
BIN URI: BOLD: AAR1764



BIOUG01309-G02 [Dorsal]
Tachyporus atriceps
BIN URI: BOLD: ABX2484



BIOUG01649-A09 [Dorsal]
Trixagus
BIN URI: BOLD: ABW2869



08TTML-0739 [Lateral]
Hydrophoria lancifer
BIN URI: BOLD: AAG2460



BIOUG16065-F12 [Lateral]
Cecidomyiidae
BIN URI: BOLD: ACK4716



BIOUG31103-H02 [Lateral]
Paratanytarsus
BIN URI: BOLD: ADE1676



BIOUG03558-C01 [Lateral]
Polypedium
BIN URI: BOLD: ACC8266



BIOUG05572-G05 [Lateral]
Heterotrissocladius changi
BIN URI: BOLD: AAX0836



BIOUG08822-A07 [Lateral]
Heterotrissocladius
BIN URI: BOLD: ACY8937



BIOUG05514-D06 [Lateral]
Paraphaenocladus impensus
BIN URI: BOLD: AAC4197



BIOUG16142-G03 [Lateral]
Orthoclaudiinae
BIN URI: BOLD: ACC4669



BIOUG01410-C09 [Lateral]
Chloropidae
BIN URI: BOLD: ABY9689



PCPP10-0130 [Lateral]
Dolichopodinae
BIN URI: BOLD: AAP8922



BIOUG01408-C09 [Lateral]
Dolichopodidae
BIN URI: BOLD: AAM6787



CNC DIPTERA 163527 [Lateral]
Platypalpus sp. 17
BIN URI: BOLD: AAF9771



CCDB-21323-D09 [Lateral]
Homoneura incerta
BIN URI: BOLD: AAH3542



CCDB-12827-H07 [Lateral]
Coenosia tigrina
BIN URI: BOLD: AAB5609



BIOUG01645-C06 [Lateral]
Phaonia
BIN URI: BOLD: ABU9891



BIOUG01356-H11 [Lateral]
Cordyla
BIN URI: BOLD: ABV9015



BIOUG01302-G01 [Lateral]
Megaselia
BIN URI: BOLD: ADA3072



BIOUG03824-H03 [Lateral]
Megaselia
BIN URI: BOLD: AAG3275



09BBEDI-1249 [Lateral]
Psila
BIN URI: BOLD: AAF9710



BIOUG01662-F06 [Lateral]
Bradysia splendida
BIN URI: BOLD: AAV1261



CCDB-21403-A01 [Lateral]
Coprocera ferruginata
BIN URI: BOLD: AAN6407



KWi-100 [Lateral]
Eumerus funeralis [skewed]
BIN URI: BOLD: AAG4654



PROBE-TW0034 [Dorsal]
Platycheirus hyperboreus
BIN URI: BOLD: ACF4734



BIOUG01364-H03 [Lateral]
Toxomerus geminatus
BIN URI: BOLD: AAC1312



BIOUG01408-B03 [Lateral]
Euaresta bella
BIN URI: BOLD: AAC6384



BIOUG03439-C11 [Lateral]
Aleyrodidae
BIN URI: BOLD: AAZ8500



BIOUG01107-D10 [Lateral]
Nearctaphis crataegifoliae
BIN URI: BOLD: ACF1270



10BBCHEM-1209 [Dorsal]
Acyrtosiphon pisum
BIN URI: BOLD: AAB1787



BIOUG01643-B03 [Lateral]
Myzocallis
BIN URI: BOLD: AAE3464



BIOUG00806-A03 [Lateral]
Tetraneura nigriabdominalis
BIN URI: BOLD: AAG3896



BIOUG00901-G06 [Lateral]
Graphocephala fennahi
BIN URI: BOLD: AAG2909



BIOUG20073-A05 [Dorsal]
Cicadellidae
BIN URI: BOLD: ACT7079



BIOUG00771-A08 [Lateral]
Endria inimica
BIN URI: BOLD: AAV0259



BIOUG05554-D09 [Lateral]
Ceratagallia sanguinolenta
BIN URI: BOLD: AAG2874



BIOUG00947-H02 [Lateral]
Dikraneura
BIN URI: BOLD: AAZ2090



BIOUG02991-C11 [Dorsal]
Erythroneura vulnerata
BIN URI: BOLD: AAO8361



BIOUG00771-B11 [Dorsal]
Erythroneura
BIN URI: BOLD: AAZ0166



BIOUG03365-C01 [Lateral]
Ribautiana
BIN URI: BOLD: AAN8288



BIOUG00947-B09 [Lateral]
Delphacodes puella
BIN URI: BOLD: AAN8423



CNC#HEM300510 [Dorsal]
Lygaeus relictivatus
BIN URI: BOLD: AAD0583



CNC#HEM039547-1 [Dorsal]
Nysius niger
BIN URI: BOLD: AAE6011



06745D02-ON [Lateral]
Ceratina calcarata
BIN URI: BOLD: AAA2368



BIOUG01795-E09 [Lateral]
Bethyilidae
BIN URI: BOLD: AAU8628



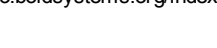
BIOUG16006-D04 [Lateral]
Alysiinae
BIN URI: BOLD: ACP8084



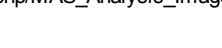
BIOUG04092-A06 [Lateral]
Ephedrus
BIN URI: BOLD: ACD1845



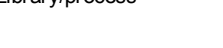
BIOUG05612-G12 [Lateral]
Diaeretiella rapae
BIN URI: BOLD: AAG1421



BIOUG01327-E11 [Lateral]
Aphidinae
BIN URI: BOLD: AAU8585



BIOUG03770-D07 [Lateral]
Blacus steffoxi
BIN URI: BOLD: AAZ9744



BIOUG31154-C06 [Lateral]
Atanycolus
BIN URI: BOLD: AAM4687



BIOUG01597-H02 [Lateral]
Hymenoptera
BIN URI: BOLD: ABA8054



ASGLE-0684 [Lateral]
Hymenoptera
BIN URI: BOLD: AAG1429





BIOUG22458-B12 [Lateral]
Rhysalinae
BIN URI: BOLD:AAQ2892



BIOUG02587-C01 [Lateral]
Ectemnius stirpicola
BIN URI: BOLD:ABA6291



BIOUG01327-A11 [Lateral]
Trichopria
BIN URI: BOLD:ABA5937



BIOUG00826-C09 [Lateral]
Diapriidae
BIN URI: BOLD:ABA9142



BIOUG08777-B09 [Lateral]
Diapriidae
BIN URI: BOLD:ACK0109



BIOUG09507-H05 [Lateral]
Encyrtidae
BIN URI: BOLD:ACK5989



BIOUG08245-D04 [Lateral]
Eulophidae
BIN URI: BOLD:AAZ1972



BIOUG03031-C12 [Lateral]
Eulophidae
BIN URI: BOLD:ABA9889



BIOUG31082-F07 [Lateral]
Charipinae
BIN URI: BOLD:ACZ3953



BIOUG05507-D08 [Lateral]
Lasius neoniger
BIN URI: BOLD:AAB9126



09GUANTS-098 [Lateral]
Myrmica AF-smi
BIN URI: BOLD:AAA1840



BIOUG01081-E03 [Lateral]
Augochlora pura
BIN URI: BOLD:AAD6445



BIOUG01283-E11 [Lateral]
Lissonota coracina
BIN URI: BOLD:AAG7794



09BBEHY-2199 [Lateral]
Lissonota
BIN URI: BOLD:AAG7644



BIOUG08686-G02 [Lateral]
Cremastinae
BIN URI: BOLD:ACJ7020



BIOUG03199-C12 [Lateral]
Cryptinae
BIN URI: BOLD:AAG9179



08TTML-0350 [Lateral]
Vulgichneumon deceptor
BIN URI: BOLD:AAG7645



08TTML-0296 [Lateral]
Enicospilus
BIN URI: BOLD:AAG7649



09BBHYM-1155 [Lateral]
Netelia
BIN URI: BOLD:AAG8119



BIOUG02712-E07 [Lateral]
Megaspilidae
BIN URI: BOLD:ABY0357



BIOUG08440-F09 [Lateral]
Megaspilidae
BIN URI: BOLD:ACK1895



BIOUG02942-D07 [Lateral]
Synopeas
BIN URI: BOLD:AAU8570



BIOUG08036-E06 [Lateral]
Synopeas
BIN URI: BOLD:ACI9826



BIOUG31104-F02 [Lateral]
Synopeas
BIN URI: BOLD:ADE0601



BIOUG06891-D10 [Lateral]
Platygasteridae
BIN URI: BOLD:ACH2447



BIOUG06544-G10 [Lateral]
Telenomus
BIN URI: BOLD:AAN8001



BIOUG08440-F01 [Lateral]
Telenomus
BIN URI: BOLD:ACK0342



BIOUG00837-H03 [Lateral]
Trissolcus
BIN URI: BOLD:AAN7679



ASGLE-0378 [Lateral]
Platygasteridae
BIN URI: BOLD:AAU8342



BIOUG25540-A05 [Lateral]
Pteromalidae
BIN URI: BOLD:ACX8371



BIOUG25528-F09 [Lateral]
Pteromalidae
BIN URI: BOLD:ACX9086



BIOUG01081-H11 [Lateral]
Vespula maculifrons
BIN URI: BOLD:AAD5593



CCDB-22978-A09 [Dorsal]
Bucculatrix pomifoliella
BIN URI: BOLD:AAD2085



jflandry1226 [Dorsal]
Crambus praeffectellus
BIN URI: BOLD:AAA3654



BIOUG03906-F11 [Dorsal]
Machimia tentoriferella
BIN URI: BOLD:AAA7892



jflandry2332 [Dorsal]
Parectopa pennsylvaniella
BIN URI: BOLD:ABZ0172



05-NCCC-454 [Dorsal]
Sunira bicolorago
BIN URI: BOLD:AAA4426



BIOUG00571-C08 [Lateral]
Merope tuber
BIN URI: BOLD:AAQ2292



BIOUG02004-G02 [Lateral]
Melanoplus
BIN URI: BOLD:AAA4555



BIOUG00771-D02 [Lateral]
Ectopsocus meridionalis
BIN URI: BOLD:AAM8931



BIOUG02071-C03 [Lateral]
Lachesilla
BIN URI: BOLD:ACA4495



BIOUG01239-E11 [Lateral]
Graphopsocus cruciatus
BIN URI: BOLD:ACA2933



BIOUG03831-H04 [Dorsal]
Phlaeothripinae
BIN URI: BOLD:ABX2572



BIOUG09210-A10 [Dorsal]
Thrips
BIN URI: BOLD:ACZ4168

Copyright © 2014 BOLD Systems. All rights reserved.