

Image Library - SEARCH: Process ids(93 ids)

Print

Parameters

Records Included: All records
 Filter Image by Orientation: None
 Aspect Ratio: Normalized 3:2

Result Summary

Total Records: 93

Re-render images: per row

5000 Records Per Page - Pages: 1



BIOUG01959-F10 [Dorsal]
Eustala
 BIN URI: BOLD: AAN5451



TDWG-1019 [Lateral]
Parasteatoda tepidarium
 BIN URI: BOLD: AAC0175



BIOUG03561-E04 [Dorsal]
Bassariana utahensis
 BIN URI: BOLD: AAF0365



BIOUG02050-G01 [Dorsal]
 Anystidae
 BIN URI: BOLD: ACA6346



BIOUG02030-H08 [Dorsal]
Dicerca lurida
 BIN URI: BOLD: AAF5689



BIOUG00993-B09 [Lateral]
Longitarsus scutellaris
 BIN URI: BOLD: AAN6151



BIOUG08060-F08 [Lateral]
Sphenophorus
 BIN URI: BOLD: AAZ2346



CCDB-22965-F06 [Dorsal]
Aeolus
 BIN URI: BOLD: ABA4842



BIOUG05507-H02 [Dorsal]
Corticina
 BIN URI: BOLD: AAH0256



BIOUG05507-E08 [Dorsal]
Trixagus carnicollis
 BIN URI: BOLD: AAN6148



BIOUG02832-H01 [Dorsal]
Trixagus
 BIN URI: BOLD: AAU6966



BIOUG01649-A09 [Dorsal]
Trixagus
 BIN URI: BOLD: ABW2869



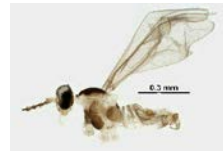
BIOUG01428-B12 [Lateral]
 Anthomyiidae
 BIN URI: BOLD: AAG1708



BIOUG06928-F02 [Lateral]
 Cecidomyiidae
 BIN URI: BOLD: AAA1259



BIOUG05503-B09 [Lateral]
 Cecidomyiidae
 BIN URI: BOLD: AAN5268



BIOUG08171-E04 [Lateral]
 Cecidomyiidae
 BIN URI: BOLD: ACJ3151



BIOUG22417-E04 [Lateral]
 Cecidomyiidae
 BIN URI: BOLD: ACV4544



BIOUG25531-D04 [Lateral]
 Cecidomyiidae
 BIN URI: BOLD: ACX8294



BIOUG01423-F06 [Lateral]
Forcipomyia bipunctata
 BIN URI: BOLD: AAN5148



BIOUG08804-E06 [Lateral]
 Ceratopogonidae
 BIN URI: BOLD: ACK2453



Finnmark727 [Dorsal]
Paracladopelma winnelli
 BIN URI: BOLD: AAK4963



BIOUG08482-E10 [Lateral]
Tanytarsus
 BIN URI: BOLD: AAG5463



BIOUG05572-G05 [Lateral]
Heterotrissocladius changi
 BIN URI: BOLD: AAX0836



BIOUG08822-A07 [Lateral]
Heterotrissocladius
 BIN URI: BOLD: ACY8937



BIOUG05514-D06 [Lateral]
Paraphaenocladus impensus
 BIN URI: BOLD: AAG4197



BIOUG05503-E10 [Lateral]
Smittia sp. 22ES
 BIN URI: BOLD: AAN5358



10JSROW-1409 [Lateral]
 Orthoclaadiinae
 BIN URI: BOLD: AAN5342



BIOUG16142-G03 [Lateral]
 Orthoclaadiinae
 BIN URI: BOLD: ACC4669



BIOUG05514-B08 [Lateral]
 Orthoclaadiinae
 BIN URI: BOLD: ACU7906



BIOUG01543-D12 [Lateral]
 Incertella
 BIN URI: BOLD: AAN5660



BIOUG01408-D04 [Lateral]



CCDB-23519-H01 [Lateral]



BIOUG05530-B06 [Lateral]



BIOUG01338-E07 [Lateral]



BIOUG01302-G01 [Lateral]



BIOUG22366-D04 [Lateral]

Heleomyzidae
BIN URI: BOLD:AAE1978



10PHMAL-2821 [Lateral]
Megaselia
BIN URI: BOLD:AAM9375

Phaonia fuscana
BIN URI: BOLD:AAG1743



BIOUG02979-F02 [Lateral]
Megaselia
BIN URI: BOLD:AAU6533

Phaonia tuguriorum
BIN URI: BOLD:AAL2750



BIOUG17998-G03 [Lateral]
Megaselia
BIN URI: BOLD:ACX6289

Mycetophila fungorum
BIN URI: BOLD:ACF2821



10PHMAL-1216 [Lateral]
Phora
BIN URI: BOLD:AAM9376

Megaselia
BIN URI: BOLD:ADA3072



BIOUG01459-D09 [Lateral]
Conicera
BIN URI: BOLD:AAG3236

Megaselia
BIN URI: BOLD:AAG3259



BIOUG08005-H09 [Lateral]
Psychoda
BIN URI: BOLD:AAF9314



GUE06-FLY-094 [Lateral]
Diptera
BIN URI: BOLD:AAG6743



BIOUG01116-B12 [Lateral]
Bradysia lembkei
BIN URI: BOLD:AAQ0275



BIOUG05608-B02 [Lateral]
Bradysia strenua
BIN URI: BOLD:ACF9614



BIOUG22328-C12 [Lateral]
Bradysia urticae
BIN URI: BOLD:AAY6412



BIOUG02936-E01 [Lateral]
Bradysia impatiens
BIN URI: BOLD:AAV1295



08TTML-1623 [Lateral]
Corynoptera deserta
BIN URI: BOLD:AAAN6433



BIOUG02979-D09 [Lateral]
Corynoptera furcata
BIN URI: BOLD:ABU5521



BIOUG04307-G10 [Lateral]
Leptosciarella scutellata
BIN URI: BOLD:ACD1218



BIOUG02987-C06 [Lateral]
Lycoriella sativae
BIN URI: BOLD:ABA1215



BIOUG01349-A07 [Lateral]
Simulium
BIN URI: BOLD:AAA4121



CCDB-21403-A01 [Lateral]
Coproica ferruginata
BIN URI: BOLD:AAAN6407



CNC DIPTERA 192379 [Lateral]
Tipula paludosa
BIN URI: BOLD:AAE7386



BIOUG03439-C11 [Lateral]
Aleyrodidae
BIN URI: BOLD:AAZ8500



TDWG-1115 [Dorsal]
Hemiptera
BIN URI: BOLD:AAAN8408



BIOUG05599-E07 [Lateral]
Capitophorus eleagni
BIN URI: BOLD:AAE3015



BIOUG01107-D10 [Lateral]
Nearctaphis crataegifoliae
BIN URI: BOLD:ACF1270



BIOUG03367-F04 [Lateral]
Rhopalomyzus
BIN URI: BOLD:ACA4534



BIOUG00901-F09 [Lateral]
Osbornellus auroniensis
BIN URI: BOLD:AAO4039



HLC-17466 [Lateral]
Metcalfa pruinosa
BIN URI: BOLD:AAG4399



CNC#HEM301185 [Dorsal]
Banasa dimidiata
BIN URI: BOLD:AAG1808



BC-ZSM-HYM-20699-B05 [adult]
Centroдора
BIN URI: BOLD:ACI17773



BIOUG01600-C11 [Lateral]
Encarsia
BIN URI: BOLD:ABW3129



BIOUG00836-C03 [Lateral]
Dinotrema
BIN URI: BOLD:AAU8379



BIOUG25633-E06 [Lateral]
Dinotrema
BIN URI: BOLD:ACP4606



10BBHYM-1326 [Lateral]
Lysiphlebus testaceipes
BIN URI: BOLD:AAG1226



BIOUG03770-D07 [Lateral]
Blacus stelfoxi
BIN URI: BOLD:AAZ9744



BIOUG25479-C06 [Lateral]
Euphorinae
BIN URI: BOLD:ADD2874



BIOUG08647-G07 [Lateral]
Apanteles ensiger
BIN URI: BOLD:ACE6783



BIOUG22458-B12 [Lateral]
Rhyssalinae
BIN URI: BOLD:AAQ2892



BIOUG03409-B05 [Lateral]
Braconidae
BIN URI: BOLD:AAQ2943



ASGLE2-0234 [Lateral]
Hymenoptera
BIN URI: BOLD:AAU8736



BIOUG01327-A11 [Lateral]
Trichopria
BIN URI: BOLD:ABA5937



BIOUG25607-A02 [Lateral]
Diapriidae
BIN URI: BOLD:ABA8019



BIOUG03931-D08 [Lateral]
Encyrtidae
BIN URI: BOLD:ABV2746



TDWG-0455 [Lateral]
Camponotus pennsylvanicus
BIN URI: BOLD:AAA9461



BIOUG05507-D08 [Lateral]
Lasius neoniger
BIN URI: BOLD:AA99126



TDWG-0587 [Lateral]
Prenolepis imparis
BIN URI: BOLD:AAC1302



09GUANTS-098 [Lateral]
Myrmica AF-smi
BIN URI: BOLD:AAA1840



BIOUG08494-F08 [Dorsal]
Megaspilidae
BIN URI: BOLD:ACF8465



BIOUG31033-H05 [Lateral]
Megaspilidae
BIN URI: BOLD:ADE4077



BIOUG22470-D03 [Dorsal]
Anagrus
BIN URI: BOLD:ABV2812



BIOUG03904-C12 [Lateral]
Myrmidae
BIN URI: BOLD:ABW3187



BIOUG02984-E07 [Lateral]
Telenomus podisi
BIN URI: BOLD:AA9192



BIOUG16223-C04 [Lateral]
Telenomus
BIN URI: BOLD:AAU8457



BIOUG02619-F11 [Lateral]
Telenomus
BIN URI: BOLD:ABA6265



BIOUG16166-C03 [Lateral]
Scelioninae
BIN URI: BOLD:ACL1176



BIOUG07190-F11 [Lateral]
Platygastriidae
BIN URI: BOLD:ACI3553



BIOUG31034-G05 [Lateral]
Platygastriidae
BIN URI: BOLD:ADE3729



08TTML-2699 [Lateral]
Valenzuela flavidus
BIN URI: BOLD:AAN8447



BIOUG01240-B05 [Lateral]
Trichadenotecnum alexanderae
complex
BIN URI: BOLD:ACE6318



BIOUG21411-B02 [Dorsal]
Phlaeothripidae
BIN URI: BOLD:ACU9371

Copyright © 2014 BOLD Systems. All rights reserved.