

Image Library - SEARCH: Process ids(103 ids)

Print

Parameters

Records Included: All records
 Filter Image by Orientation: None
 Aspect Ratio: Normalized 3:2

Result Summary

Total Records: 103

Re-render images: per row

5000 Records Per Page - Pages: 1



BIOUG02782-G05 [Dorsal]
Erigone alertris
 BIN URI: BOLD: AAD1746



TDWG-1037 [Dorsal]
Ptyohyphantes costatus
 BIN URI: BOLD: AAC6457



CCDB-05302-A02 [Dorsal]
Philodromus rufus vibrans
 BIN URI: BOLD: AAB2768



TDWG-0953 [Dorsal]
Phalangium opilio
 BIN URI: BOLD: AAI4346



BIOUG04017-D01 [Dorsal]
 Anystidae
 BIN URI: BOLD: AAM7964



BIOUG03583-H07 [Dorsal]
 Anystidae
 BIN URI: BOLD: ACX4720



BIOUG03583-D10 [Lateral]
Entomobrya nivalis
 BIN URI: BOLD: AAA8924



CCDB-22982-A12 [Dorsal]
Phyllotreta striolata
 BIN URI: BOLD: AAP7016



CCDB-22981-H08 [Dorsal]
Tricholochmaea
 BIN URI: BOLD: AAG4420



CCDB-22969-C03 [Dorsal]
Coccinella prolongata
 BIN URI: BOLD: AAA8933



BIOUG02275-G11 [Dorsal]
 Coccinellidae
 BIN URI: BOLD: ACU8237



BIOUG05507-H02 [Dorsal]
 Corticarina
 BIN URI: BOLD: AAH0256



BIOUG00971-B09 [Dorsal]
Cyphon variabilis
 BIN URI: BOLD: ACX4619



BIOUG04492-F09 [Dorsal]
Quedius criddlei
 BIN URI: BOLD: ACA7311



CCDB-22987-G10 [Dorsal]
Lordithon fungicola
 BIN URI: BOLD: AAG4307



08TTML-2157 [Lateral]
Pegomya
 BIN URI: BOLD: AAG2464



BIOUG04101-F01 [Lateral]
Bibio longipes
 BIN URI: BOLD: ACT0146



BIOUG06465-D01 [Lateral]
Calliphora alaskensis
 BIN URI: BOLD: AAB6579



08BBDIP-1038 [Lateral]
Phormia regina
 BIN URI: BOLD: AAB9140



BIOUG02714-G06 [Lateral]
 Cecidomyiidae
 BIN URI: BOLD: ABX0280



BIOUG16123-D12 [Lateral]
Campsicnemus alexanderi
 BIN URI: BOLD: ACP9392



BIOUG25572-F02 [Lateral]
 Cecidomyiidae
 BIN URI: BOLD: ACX8665



BIOUG01389-E07 [Lateral]
Tanytarsus mendax
 BIN URI: BOLD: ACX2014



BIOUG05514-D06 [Lateral]
Paraphaenocladus impensus
 BIN URI: BOLD: AAC4197



BIOUG16790-H03 [Lateral]
Smittia sp. ES12
 BIN URI: BOLD: AAB0377



BIOUG01426-C08 [Lateral]
 Elachiptera
 BIN URI: BOLD: AAH4208



10PROBE-09248 [Lateral]
Campsicnemus alexanderi
 BIN URI: BOLD: AAG9638



BIOUG01352-B02 [Lateral]
Drosophila neotestacea
 BIN URI: BOLD: AAC7070



BIOUG06388-G04 [Lateral]
 Drosophila
 BIN URI: BOLD: AAG8495



10BBCDIP-1496 [Lateral]
Drosophila recens
 BIN URI: BOLD: ACF0720



BIOUG01422-A12 [Lateral]



08TTML-0746 [Lateral]



CCDB-21401-B12 [Lateral]



10BBCDIP-2166 [Lateral]



BIOUG01408-D04 [Lateral]



08TTML-0842 [Lateral]

Dryomyzidae
BIN URI: BOLD:AAC6974



BIOUG03418-E02 [Lateral]
Muscina sp. 1 AKR
BIN URI: BOLD:AAB8818

Heleomyzidae
BIN URI: BOLD:AAG0462



BIOUG04485-G08 [Lateral]
Dasyphora cordilleriana
BIN URI: BOLD:AAH3031

Suilla longipennis
BIN URI: BOLD:AAG0468



BIOUG01349-F02 [Lateral]
Dasyphora sp.
BIN URI: BOLD:AAG6757

Suilla nemorum
BIN URI: BOLD:ACX5303



10BBCDIP-2971 [Lateral]
Helina annosa
BIN URI: BOLD:AAK4683

Heleomyzidae
BIN URI: BOLD:AAE1978



BIOUG03556-H03 [Lateral]
Brevicornu
BIN URI: BOLD:AAP8155

Hybotidae
BIN URI: BOLD:AAN5501



BIOUG01337-B11 [Lateral]
Cordyla
BIN URI: BOLD:ABU5545



BIOUG21429-A02 [Lateral]
Mycetophilinae
BIN URI: BOLD:AAM8992



MTDIC-0025 [Lateral]
Megaselia
BIN URI: BOLD:AAG3234



BIOUG14592-E09 [Lateral]
Megaselia
BIN URI: BOLD:AAG3266



BIOUG04254-B06 [Lateral]
Psychoda phalaenoides
BIN URI: BOLD:AAF9317



BIOUG01360-E04 [Lateral]
Psychoda
BIN URI: BOLD:AAG3154



BIOUG01666-F10 [Lateral]
Bradysia hilaris
BIN URI: BOLD:AAP9903



BIOUG12049-H06 [Lateral]
Scatopsiara
BIN URI: BOLD:ACG8499



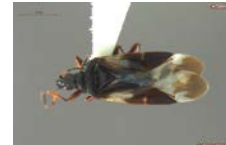
BIOUG05205-H07 [Lateral]
Sciaridae
BIN URI: BOLD:ACG5028



10BBCDIP-2477 [Lateral]
Linnaemya
BIN URI: BOLD:AAI1339



10BBCDIP-3098 [Lateral]
Tephritidae
BIN URI: BOLD:AAP6406



UAM:Ento:97198 [Dorsal]
Anthorcoris musculus
BIN URI: BOLD:AAF9945



10BBCHEM-0189 [Dorsal]
Nearctaphis bakeri
BIN URI: BOLD:AAD0902



10BBCHEM-0381 [Lateral]
Nearctaphis sensoriata
BIN URI: BOLD:AAG3602



BIOUG00947-F08 [Dorsal]
Chaitophorus neglectus
BIN URI: BOLD:AAB4394



BIOUG20977-C04 [Dorsal]
Eriosoma americanum
BIN URI: BOLD:AAD7955



TDWG-1110 [Dorsal]
Pterocomma smithiae
BIN URI: BOLD:AAF5269



BIOUG00856-G02 [Lateral]
Lepyrionia quadrangularis
BIN URI: BOLD:AAG8827



CNC#HEM400181 [Lateral]
Cuerna striata
BIN URI: BOLD:AAG2877



CNC#HEM403694 [Dorsal]
Chlorotettix lusorius
BIN URI: BOLD:AAy6756



BIOUG00943-H06 [Lateral]
Idiocerus
BIN URI: BOLD:AAG2890



BIOUG03331-C03 [Dorsal]
Empoasca
BIN URI: BOLD:ABA5763



BIOUG17143-D05 [Lateral]
Delphacidae
BIN URI: BOLD:ACV8473



CNC#HEM032700-8 [Dorsal]
Lygus lineolaris
BIN URI: BOLD:AA5803



CNC#HEM301007 [Dorsal]
Lygus punctatus
BIN URI: BOLD:ABZ1405



CCDB-21314-H04 [Dorsal]
Eremocoris ferus
BIN URI: BOLD:AAG8968



BIOUG21116-C08 [Lateral]
Aphytis
BIN URI: BOLD:ABW3280



BIOUG04737-F09 [Lateral]
Dinotrema
BIN URI: BOLD:ACE1430



BIOUG00726-A12 [Lateral]
Aphidius cingulatus
BIN URI: BOLD:AAH7433



BIOUG07123-C06 [Lateral]
Braconidae
BIN URI: BOLD:ACM9884



BIOUG04286-B10 [Lateral]
Diapriidae
BIN URI: BOLD:ABX5572



BIOUG11077-E09 [Lateral]
Diapriidae
BIN URI: BOLD:ACM0822



BIOUG08777-C09 [Lateral]
Diapriidae
BIN URI: BOLD:AAP6714



BIOUG04311-B04 [Lateral]
Diapriidae
BIN URI: BOLD:ACD1629



09BBEFO-0309 [Lateral]
Formica rufa
BIN URI: BOLD:ACF4683



BIOUG07270-A12 [Lateral]
Exetastes
BIN URI: BOLD:ACG2110



BIOUG25561-H07 [Lateral]
Enytus
BIN URI: BOLD:ACX8917



BIOUG01044-F04 [Lateral]
Gambus
BIN URI: BOLD:ACG8499



BIOUG00854-G06 [Lateral]
Cryptinae
BIN URI: BOLD:AAG3234



06-PROBE-3659 [Lateral]
Ichneumoninae
BIN URI: BOLD:AAI1339



10PHMAL-3230 [Lateral]
Orthocentrus
BIN URI: BOLD:AAH7433



BIOUG04189-A11 [Lateral]
Orthocentrus
BIN URI: BOLD:AAH7433



BIOUG04095-B06 [Lateral]
Stenomacrus
BIN URI: BOLD:ABZ1405

BIN URI: BOLD:AAG8217

BIN URI: BOLD:ABY7035

BIN URI: BOLD:AAE2749

BIN URI: BOLD:AAU8218

BIN URI: BOLD:ACM2706

BIN URI: BOLD:ACG3877



BIOUG00836-A10 [Lateral]
Stenomacrus
BIN URI: BOLD:ACN3086



ASGLE-0216 [Lateral]
Hymenoptera
BIN URI: BOLD:AAU8582



CNCHYM 013205 [Lateral]
Itopectis quadricingulata
BIN URI: BOLD:AAB1283



BIOUG00801-E07 [Lateral]
Pimpla sp.
BIN URI: BOLD:AAD5193



BIOUG08683-E05 [Dorsal]
Dendrocerus
BIN URI: BOLD:AAL1185



BIOUG11095-F01 [Lateral]
Megaspilidae
BIN URI: BOLD:ACF6761



BIOUG07437-E05 [Lateral]
Megaspilidae
BIN URI: BOLD:ACJ3945



BIOUG25654-C04 [Lateral]
Telenomus
BIN URI: BOLD:AAG7892



BIOUG03645-E02 [Lateral]
Telenomus
BIN URI: BOLD:AAV1142



BIOUG01665-C10 [Lateral]
Telenomus
BIN URI: BOLD:ABA5898



BIOUG03998-G04 [Lateral]
Telenomus
BIN URI: BOLD:ACC8435



BIOUG03412-B05 [Lateral]
Platygastriidae
BIN URI: BOLD:ACC0983



BIOUG07288-A02 [Lateral]
Pteromalidae
BIN URI: BOLD:ACI8854



BIOUG25608-C05 [Lateral]
Torymidae
BIN URI: BOLD:ACY2130



CCDB-24283-G09 [Dorsal]
Anacampsis niveopulvella
BIN URI: BOLD:AAC2309



BIRD24832 [Dorsal]
Gnorimoschema gallaeasterella
BIN URI: BOLD:AAC5670



DNA-ATBI-3247 [Dorsal]
Syncopacma [skewed]
BIN URI: BOLD:AAF9988



CNLEP00082494 [Dorsal]
Operophtera bruceata
BIN URI: BOLD:AAA2999



BIOUG00851-B10 [Dorsal]
Litholomia napaea
BIN URI: BOLD:AAB0068

Copyright © 2014 BOLD Systems. All rights reserved.