

Image Library - SEARCH: Process ids(139 ids)

Print

Parameters

Records Included: All records
 Filter Image by Orientation: None
 Aspect Ratio: Normalized 3:2

Result Summary

Total Records: 139

Re-render images: per row

5000 Records Per Page - Pages: 1



TDWG-0963 [Dorsal]
 Cheiracanthium mildei
 BIN URI: BOLD: AAB7601



BIOUG20599-C06 [Dorsal]
 Sergiolus
 BIN URI: BOLD: ACV6055



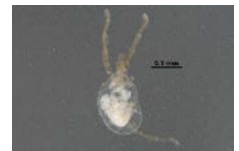
BIOUG02050-G03 [Dorsal]
 Anystidae
 BIN URI: BOLD: ABW5642



BIOUG25742-E02 [Dorsal]
 Anystidae
 BIN URI: BOLD: ACY3808



BIOUG08570-E04 [Lateral]
 Abrolophus
 BIN URI: BOLD: AC19840



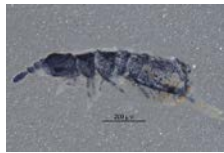
BIOUG31075-G04 [Dorsal]
 Erythraeidae
 BIN URI: BOLD: AAF9237



BIOUG03583-E08 [Dorsal]
 Tetranychidae
 BIN URI: BOLD: ACC8918



BIOUG02088-A10 [Lateral]
 Entomobrya unostriata
 BIN URI: BOLD: AAH6630



BIOUG16047-B04 [Lateral]
 Isotoma viridis
 BIN URI: BOLD: AAO1587



CNC COLEO 00252245 [Dorsal]
 Anthicus cervinus
 BIN URI: BOLD: AAH2753



10BBCOL-0074 [Dorsal]
 Acalymma vittatum
 BIN URI: BOLD: AAF4335



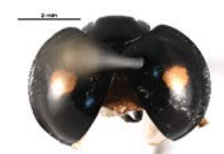
RMNH.INS.536341 [Dorsal]
 Chaetochema hortensis
 BIN URI: BOLD: AAM7650



BIOUG22575-B07 [Dorsal]
 Epitrix cucumeris
 BIN URI: BOLD: ABA9101



BIOUG00993-B09 [Lateral]
 Longitarsus scutellaris
 BIN URI: BOLD: AAN6151



BIOUG08778-B02 [Dorsal]
 Chilocorus
 BIN URI: BOLD: AAO1521



10PHMAL-1757 [Dorsal]
 Psyllobora vigintimaculata
 BIN URI: BOLD: AAH3320



BIOUG05672-A09 [Dorsal]
 Scymnus rubromaculatus
 BIN URI: BOLD: AAN9250



BIOUG00993-F05 [Dorsal]
 Sericoderus lateralis [skewed]
 BIN URI: BOLD: ABA2914



CCDB-22965-F06 [Dorsal]
 Aeolus
 BIN URI: BOLD: ABA4842



BIOUG16052-G12 [Dorsal]
 Aeolus
 BIN URI: BOLD: ACP9027



BIOUG05507-H02 [Dorsal]
 Corficarina
 BIN URI: BOLD: AAH0256



BIOUG05507-E08 [Dorsal]
 Trixagus carinicollis
 BIN URI: BOLD: AAN6148



BIOUG02832-H01 [Dorsal]
 Trixagus
 BIN URI: BOLD: AAU6966



BIOUG01383-H06 [Dorsal]
 Forficula auricularia-A
 BIN URI: BOLD: AAG8987



08TTML-0977 [Lateral]
 Liriomyza brassicae
 BIN URI: BOLD: AAF6806



BIOUG01544-C05 [Lateral]
 Anthomyia
 BIN URI: BOLD: AAP2970



BIOUG01392-H10 [Lateral]
 Eutrichota lipsia
 BIN URI: BOLD: AAF4234



GUE06-FLY-093 [Lateral]
 Diptera
 BIN URI: BOLD: AAA6618



10PHMAL-3432 [Lateral]
 Cecidomyiidae
 BIN URI: BOLD: AAN5178



BIOUG25524-G07 [Lateral]
 Cecidomyiidae
 BIN URI: BOLD: AAP9022



BIIOUG31077-C05 [Lateral]
Cecidomyiidae
BIN URI: BOLD:ADE0564



BIIOUG05516-G04 [Lateral]
Psectrocladius cf. limbatellus
BIN URI: BOLD:ACY6524



08BBDIP-0637 [Lateral]
Scaptomyza pallida
BIN URI: BOLD:AAG8493



BIIOUG03824-H03 [Lateral]
Megaselia
BIN URI: BOLD:AAG3275



BIIOUG01459-D09 [Lateral]
Conicera
BIN URI: BOLD:AAG3236



10JSROW-1277 [Lateral]
Scathophaga stercoraria
BIN URI: BOLD:AAD0853



CNC DIPTERA 192379 [Lateral]
Tipula paludosa
BIN URI: BOLD:AAE7386



CNC#HEM032700-8 [Dorsal]
Lygus lineolaris
BIN URI: BOLD:AAA5803



BIIOUG01236-C11 [Lateral]
Opsius stactogalus
BIN URI: BOLD:AAN8310

BIIOUG01543-D06 [Lateral]
Chamaemyiidae
BIN URI: BOLD:AAG6951



BIIOUG16142-G03 [Lateral]
Orthocladinae
BIN URI: BOLD:ACC4669



CNC DIPTERA 163527 [Lateral]
Platypalpus sp. 17
BIN URI: BOLD:AAF9771



09BBDIP-1742 [Lateral]
Megaselia
BIN URI: BOLD:AAG3286



BIIOUG01423-F09 [Lateral]
Psychoda alternata
BIN URI: BOLD:AAF9306



10JSROW-1558 [Lateral]
Bradysia fenestralis
BIN URI: BOLD:AAV1366



BIIOUG01422-D12 [Lateral]
Delphinia picta
BIN URI: BOLD:AAC4591



BIIOUG01236-D05 [Lateral]
Psyllidae
BIN URI: BOLD:AAB8718



BIIOUG00947-H02 [Lateral]
Dikraneura
BIN URI: BOLD:AAZ2090

09BBDIP-2093 [Lateral]
Chironomus
BIN URI: BOLD:AAB7030



BIIOUG01400-C01 [Lateral]
Thaumatomyia
BIN URI: BOLD:AAH4135



TDWG-1258 [Lateral]
Neolimnophila placida
BIN URI: BOLD:AAU6656



BIIOUG03069-B03 [Lateral]
Megaselia
BIN URI: BOLD:AAG3342



BIIOUG01402-E01 [Lateral]
Melanophora roralis
BIN URI: BOLD:AAG6862



BIIOUG01662-F06 [Lateral]
Bradyia splendida
BIN URI: BOLD:AAV1261



10BBCHEM-1209 [Dorsal]
Acyrtosiphon pisum
BIN URI: BOLD:AAB1787



BIIOUG00947-H02 [Lateral]
Dikraneura
BIN URI: BOLD:AAZ2090



CCDB-21316-G01 [Dorsal]
Corythucha marmorata
BIN URI: BOLD:AAR9127

BIIOUG05510-F06 [Lateral]
Paratanytarsus grimmii
BIN URI: BOLD:AAD1485



09BBDIP-1342 [Lateral]
Gaurax dorsalis
BIN URI: BOLD:AAH4195



BIIOUG01645-C06 [Lateral]
Phaonia
BIN URI: BOLD:ABU9891



BIIOUG01403-G10 [Lateral]
Megaselia
BIN URI: BOLD:AAM9355



BIIOUG01349-B05 [Lateral]
Boettcheria cimicis
BIN URI: BOLD:AAG6756



09BBDIP-0161 [Lateral]
Dictya
BIN URI: BOLD:ACZ5284



BIIOUG01642-A07 [Dorsal]
Pemphigus bursarius
BIN URI: BOLD:AAD1826



BIIOUG00936-D01 [Lateral]
Empoasca fabae
BIN URI: BOLD:AAG2868



06745D02-ON [Lateral]
Ceratina calcarata
BIN URI: BOLD:AAA2368

BIIOUG01400-H10 [Lateral]
Chironomidae
BIN URI: BOLD:AAG0996



09BBDIP-1583 [Lateral]
Aedes vexans
BIN URI: BOLD:AAA7067



BIIOUG01338-E07 [Lateral]
Mycetophila fungorum
BIN URI: BOLD:ACF2821



BIIOUG01619-A10 [Lateral]
Megaselia
BIN URI: BOLD:AAU6600



GUE06-FLY-094 [Lateral]
Diptera
BIN URI: BOLD:AAG6743



CCDB-21403-H08 [Lateral]
Rachispoda richardsi
BIN URI: BOLD:AAG7290



BIIOUG00806-F09 [Lateral]
Balclutha abdominalis
BIN URI: BOLD:AAD4769



BIIOUG03926-F07 [Lateral]
Erythroneura rubrella
BIN URI: BOLD:ACC8414



BIIOUG01443-G02 [Lateral]
Alysiinae
BIN URI: BOLD:ABW3186

BIIOUG05514-D06 [Lateral]
Paraphaenocladus impensus
BIN URI: BOLD:AAC4197



BIIOUG14573-B01 [Lateral]
Chrysotus sp.
BIN URI: BOLD:AAG9668



BIIOUG01302-G01 [Lateral]
Megaselia
BIN URI: BOLD:ADA3072



BIIOUG23900-B01 [Lateral]
Megaselia
BIN URI: BOLD:ACX6055



BIIOUG08898-E03 [Lateral]
Scathophaga furcata
BIN URI: BOLD:ACX4405



BIIOUG00915-B09 [Lateral]
Trachypopella nuda
BIN URI: BOLD:AAG7289



BIIOUG00771-A08 [Lateral]
Endria inimica
BIN URI: BOLD:AAV0259



BIIOUG00947-A01 [Lateral]
Typhlocyba rosae
BIN URI: BOLD:ABA5828



BIIOUG03770-D07 [Lateral]
Blacus steffoxi
BIN URI: BOLD:AAZ9744



BIIOUG08491-H06 [Lateral]
Meteorus
BIN URI: BOLD:AAG8408



ASGLE-0684 [Lateral]
Hymenoptera
BIN URI: BOLD:AAG1429



BIIOUG08647-G07 [Lateral]
Apanteles ensiger
BIN URI: BOLD:ACE6783



BIIOUG02935-D09 [Lateral]
Opinae
BIN URI: BOLD:AAP6716



BIIOUG01598-B10 [Lateral]
Encyrtidae
BIN URI: BOLD:AAZ0175



BIIOUG01309-B11 [Lateral]
Encyrtidae
BIN URI: BOLD:ABX2601



BIIOUG10201-C10 [Lateral]
Encyrtidae
BIN URI: BOLD:ACJ7225



BIIOUG09507-H05 [Lateral]
Encyrtidae
BIN URI: BOLD:ACK5989



10BBHYM-0552 [Lateral]
Hymenoptera
BIN URI: BOLD:AAH7767



BIIOUG01665-H08 [Lateral]
Eucollinae
BIN URI: BOLD:ABA5904



BIIOUG05536-A01 [Lateral]
Brachymyrmex depilis
BIN URI: BOLD:AAD7490



09BBEFO-0388 [Lateral]
Formica glacialis
BIN URI: BOLD:AAA1468



CCDB-10835-H06 [Lateral]
Myrmica americana [skewed]
BIN URI: BOLD:ABZ3538



BIIOUG03770-A05 [Lateral]
Poner pensylvanica
BIN URI: BOLD:AAF0441



BIIOUG00861-F11 [Lateral]
Cymodusa distincta
BIN URI: BOLD:ABZ4363



BIIOUG00910-D01 [Lateral]
Hymenoptera
BIN URI: BOLD:ABZ4364



BIIOUG03275-A09 [Lateral]
Atractodes fumatus
BIN URI: BOLD:ACC1594



BIIOUG00854-C06 [Lateral]
Cryptus albitarsis
BIN URI: BOLD:AAH1693



BIIOUG03199-C12 [Lateral]
Cryptinae [skewed]
BIN URI: BOLD:AAG9179



ASGLE-1104 [Lateral]
Ichneumonidae
BIN URI: BOLD:AAP2581



BIIOUG01575-B06 [Lateral]
Ichneumoninae
BIN URI: BOLD:ABV2671



CNCHYM 09970 [Lateral]
Itopectis conquisitor
BIN URI: BOLD:AAB1281



BIIOUG14964-G07 [Lateral]
Perithous
BIN URI: BOLD:ACP6162



BIIOUG25479-E06 [Lateral]
Tersilochinae
BIN URI: BOLD:ABW3305



BIIOUG08609-C03 [Dorsal]
Megaspilidae
BIN URI: BOLD:ACK1416



BIIOUG01280-C07 [Lateral]
Gonatocerus
BIN URI: BOLD:ABX2613



10BBHYM-1145 [Lateral]
Acordulecera
BIN URI: BOLD:AAG8280



BIIOUG09508-F06 [Lateral]
Telenomus
BIN URI: BOLD:AAH8030



BIIOUG01605-E08 [Lateral]
Telenomus
BIN URI: BOLD:AAU9439



BIIOUG23123-C12 [Lateral]
Pteromalidae
BIN URI: BOLD:ACB2103



FACU-001024 [Lateral]
Vespula germanica
BIN URI: BOLD:AAG9055



CCDB-22978-A09 [Dorsal]
Bucculatrix pomifoliella
BIN URI: BOLD:AAD2085



jfiandry1226 [Dorsal]
Crambus praefectellus
BIN URI: BOLD:AAA3654



CNACLEP00089797 [Dorsal]
Parapediasia teterellus
BIN URI: BOLD:AAA3889



CNACLEP00087632 [Dorsal]
Scoparia biplagiata
BIN URI: BOLD:AAA1518



08-SRNP-106602 [Specimen]
Anticarsia gemmatalis
BIN URI: BOLD:AAA6923



MDH000452 [Dorsal]
Aristotelia roseosuffusella
BIN URI: BOLD:AAH4948



TLMF Lep 07030 [Dorsal]
Chrysoesthia sexguttella
BIN URI: BOLD:AAD8505



DNA-ATBI-3247 [Dorsal]
Syncopacma [skewed]
BIN URI: BOLD:AAF9888



CGWC-0116 [Lateral]
Agrotis venerabilis
BIN URI: BOLD:ABZ1938



CNACLEP00084084.1 [Dorsal]
Nephelodes minians
BIN URI: BOLD:AAA5081



06-NCCC-849 [Dorsal]
Chrysodeixis includens
BIN URI: BOLD:AAA6794



CNACLEP00040356 [Dorsal]
Plutella xylostella
BIN URI: BOLD:AAA1513



DNA-ATBI-0976 [Dorsal]
Vitula edmandsii
BIN URI: BOLD:AAB9374



IAAWZ-1316 [Dorsal]
Proteoteras aesculana
BIN URI: BOLD:AAA6740



BIIOUG02004-G02 [Lateral]
Melanoplus
BIN URI: BOLD:AAA4555



BIIOUG01239-C05 [Dorsal]
Caeciliusidae
BIN URI: BOLD:ACA3113



BIIOUG01594-F11 [Lateral]
Lachesilla pedicularia
BIN URI: BOLD:AAF1729



BIOUG19804-B12 [Lateral]
Lachesilla pedicularia
 BIN URI: BOLD:ACG6125



BIOUG16150-D09 [Lateral]
Lachesilla quercus
 BIN URI: BOLD:ACP9620



BIOUG25557-F05 [Lateral]
Lachesilla contraforcepeta
 BIN URI: BOLD:ABA6546



BIOUG01239-E11 [Lateral]
Graphopsocus cruciatus
 BIN URI: BOLD:ACA2933



BIOUG04493-E01 [Lateral]
Graphopsocus cruciatus
 BIN URI: BOLD:ACB0984



UBC-2006-2046 [Dorsal]
Hydroptila consimilis
 BIN URI: BOLD:ABX5069



TDWG-0261 [Lateral]
Limnephilus submonilifer
 BIN URI: BOLD:AAA3080

Copyright © 2014 BOLD Systems. All rights reserved.