

# Image Library - SEARCH: Process ids(127 ids)

Print

## Parameters

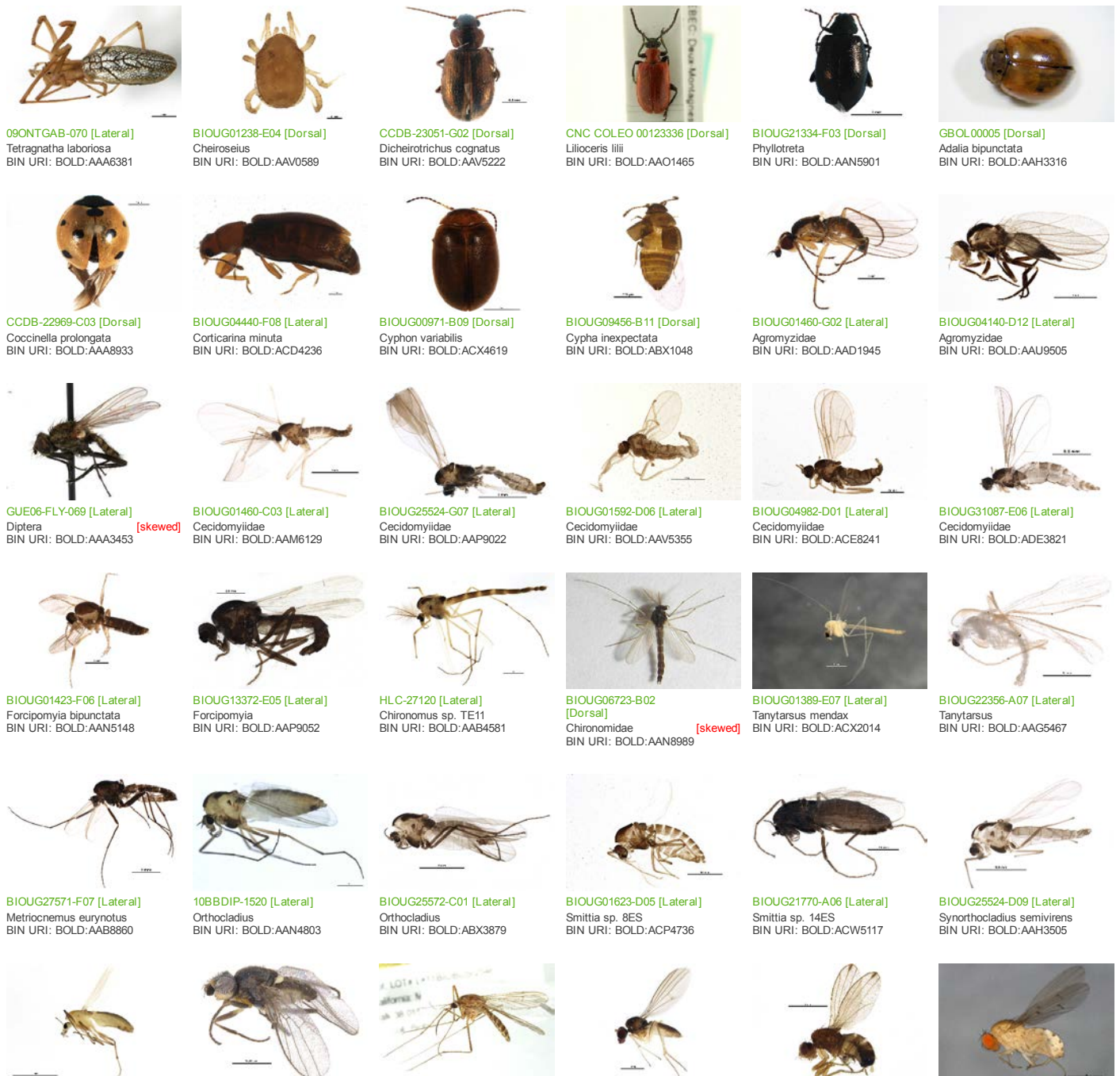
Records Included: All records  
 Filter Image by Orientation: None  
 Aspect Ratio: Normalized 3:2

## Result Summary

Total Records: 127

Re-render images:  per row

5000 Records Per Page - Pages: 1



10JSROW-1409 [Lateral]  
Orthocladiinae  
BIN URI: BOLD:AA5342



08BBDIP-0637 [Lateral]  
Scaptomyza pallida  
BIN URI: BOLD:AAG8493



CNC DIPTERA 163527 [Lateral]  
Platypalpus sp. 17  
BIN URI: BOLD:ABF9771



BIOUG04859-H07 [Lateral]  
Exechia  
BIN URI: BOLD:AAQ3544



BIOUG21089-A07 [Lateral]  
Megaselia lucifrons  
BIN URI: BOLD:AAL9075



BIOUG07048-E08 [Lateral]  
Megaselia  
BIN URI: BOLD:ACI3059



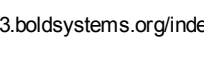
BIOUG06877-G02 [Lateral]  
Lycoriella flavipeda  
BIN URI: BOLD:AAL7869



BIOUG03541-G02 [Lateral]  
Hyperomyzus lactucae  
BIN URI: BOLD:AAB8566



CNC#HEM301007 [Dorsal]  
Lygus punctatus  
BIN URI: BOLD:ABZ1405



CCDB-23514-B02 [Lateral]  
Apallates neocoxindix  
BIN URI: BOLD:AAH4148



BIOUG01360-C12 [Lateral]  
Philygria debilis  
BIN URI: BOLD:AAG2740



BIOUG02272-G03 [Lateral]  
Hybotidae  
BIN URI: BOLD:ABX1590



BIOUG03496-H09 [Lateral]  
Exechia  
BIN URI: BOLD:ACC9967



BIOUG01920-C07 [Lateral]  
Megaselia  
BIN URI: BOLD:AAG3303



10BBCDIP-0529 [Lateral]  
Phora  
BIN URI: BOLD:AAG3238



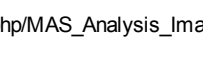
BIOUG07887-E12 [Lateral]  
Scatopsiara atomaria  
BIN URI: BOLD:AAH3920



NIBGE APH-00163 [Dorsal]  
Rhopalosiphum padi  
BIN URI: BOLD:AAA9899



CNC#HEM303618 [Dorsal]  
Nabis americanus  
BIN URI: BOLD:AAB8143



BIOUG01818-A04 [Lateral]  
Culiseta inornata  
BIN URI: BOLD:AAC9132



JKA12-0647 [Lateral]  
Psilopa compta  
BIN URI: BOLD:AAG6948



BIOUG04244-D04 [Lateral]  
Hybotidae  
BIN URI: BOLD:ACD1697



BIOUG04553-F02 [Lateral]  
Exechia  
BIN URI: BOLD:ACD9501



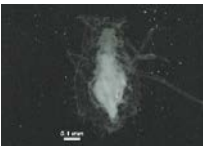
BIOUG01403-G10 [Lateral]  
Megaselia  
BIN URI: BOLD:AAM9355



BIOUG01459-D09 [Lateral]  
Conicera  
BIN URI: BOLD:AAG3236



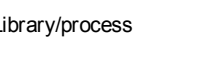
BIOUG01349-F06 [Lateral]  
Sepsis  
BIN URI: BOLD:AAC2855



BIOUG10275-E03 [Dorsal]  
Chaitophorus pusillus  
BIN URI: BOLD:AAD9343



BIOUG06574-A09 [Dorsal]  
Corythucha  
BIN URI: BOLD:ACH4305



BIOUG01338-E10 [Lateral]  
Sympycnus lineatus  
BIN URI: BOLD:AAG9713



BIOUG09104-A08 [Lateral]  
Oecothoa  
BIN URI: BOLD:AAM7341



BIOUG01459-C06 [Lateral]  
Lauxaniidae  
BIN URI: BOLD:AAP6482



BIOUG05324-C03 [Lateral]  
Mycetophila  
BIN URI: BOLD:AAG4872



BIOUG02979-F02 [Lateral]  
Megaselia  
BIN URI: BOLD:AAU6533



BIOUG05505-G01 [Lateral]  
Psychoda cinerea  
BIN URI: BOLD:ACF6513



BIOUG14578-G09 [Lateral]  
Syrphus torvus  
BIN URI: BOLD:AAC6088



BIOUG00937-B09 [Lateral]  
Macrosteles quadrilineatus  
BIN URI: BOLD:AAA9422



BIOUG08568-E11 [Lateral]  
Dinotrema  
BIN URI: BOLD:AAU8452



BIOUG06388-G04 [Lateral]  
Drosophila  
BIN URI: BOLD:AAG8495



BIOUG01408-D04 [Lateral]  
Heleomyzidae  
BIN URI: BOLD:AAE1978



BIOUG01392-A03 [Lateral]  
Symplecta cana  
BIN URI: BOLD:AAF9014



BIOUG02965-E11 [Lateral]  
Sceptonia  
BIN URI: BOLD:AAG4967



BIOUG01982-E02 [Lateral]  
Megaselia  
BIN URI: BOLD:ABY1260



BIOUG21933-D08 [Lateral]  
Bradysia tillicola  
BIN URI: BOLD:AAZ2139



BIOUG07277-A08 [Dorsal]  
Aleyrodes  
BIN URI: BOLD:ABW2915



BIOUG03439-H06 [Dorsal]  
Empoasca  
BIN URI: BOLD:AAN8289



08BBHYM-1426 [Lateral]  
Adialytus  
BIN URI: BOLD:AAH7446



10BBCDIP-1496 [Lateral]  
Drosophila recens  
BIN URI: BOLD:ACF0720



BIOUG00965-E03 [Lateral]  
Heleomyzidae  
BIN URI: BOLD:AAG0460



BIOUG01337-B11 [Lateral]  
Cordyla  
BIN URI: BOLD:ABU5545



BIOUG01402-A07 [Lateral]  
Mycetophilidae  
BIN URI: BOLD:AAN8585



BIOUG03918-H05 [Lateral]  
Megaselia  
BIN URI: BOLD:ACB6729



BIOUG02981-F02 [Lateral]  
Corynoptera cursor  
BIN URI: BOLD:AAP6465



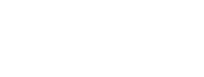
BIOUG05599-E07 [Lateral]  
Capitophorus elaeagni  
BIN URI: BOLD:AAE3015



CNC#HEM405982 [Lateral]  
Stenocranus felti  
BIN URI: BOLD:AAG1953



BIOUG16058-B03 [Lateral]  
Aphidius schimitscheki  
BIN URI: BOLD:AAF7225







BIOUG00989-C01 [Lateral]  
Hymenoptera  
BIN URI: BOLD:ACF4786



07PROBE-24061 [Lateral]  
Aphidiinae  
BIN URI: BOLD:AAG1335



10BBHYM-0121 [Lateral]  
Aphidiinae  
BIN URI: BOLD:AAJ1224



BIOUG06003-D02 [Lateral]  
Aphidiinae  
BIN URI: BOLD:AAM7497



BIOUG05962-C06 [Lateral]  
Blacus  
BIN URI: BOLD:ACE8945



BIOUG18784-D08 [Lateral]  
Meteorus  
BIN URI: BOLD:AAU9429



ASGLE2-0234 [Lateral]  
Hymenoptera  
BIN URI: BOLD:AAU8736



BIOUG04324-D02 [Lateral]  
Eulophidae  
BIN URI: BOLD:ACD3586



09BBHYM-707 [Lateral]  
Anacharis  
BIN URI: BOLD:AAG8258



BIOUG05177-A01 [Lateral]  
Charipinae  
BIN URI: BOLD:ACC6611



BIOUG25599-D11 [Lateral]  
Charipinae  
BIN URI: BOLD:ACY3139



BIOUG05120-B04 [Lateral]  
Charipinae  
BIN URI: BOLD:ADE2235



BIOUG12155-B09 [Lateral]  
Formica  
BIN URI: BOLD:AAA4977



10BBCFO-0035 [Lateral]  
Lasius  
BIN URI: BOLD:AAV5587



BIOUG06519-C02 [Lateral]  
Ichneumonidae  
BIN URI: BOLD:AAU9566



BIOUG03151-H05 [Lateral]  
Campopleginae  
BIN URI: BOLD:AAV7726



BIOUG01496-G05 [Lateral]  
Campopleginae  
BIN URI: BOLD:ABW3219



07PROBE-20422 [Lateral]  
Gelis  
BIN URI: BOLD:AAA6277



BIOUG00861-F07 [Lateral]  
Gelis sp.  
BIN URI: BOLD:AAA6280



ASGLE-0528 [Lateral]  
Hymenoptera  
BIN URI: BOLD:AAU8490



10BBCHY-0394 [Lateral]  
Cryptinae  
BIN URI: BOLD:AAE0942



BIOUG00988-H07 [Lateral]  
Ichneumonidae  
BIN URI: BOLD:AAU8613



BIOUG03119-E02 [Lateral]  
Syrphoctonus vitreus  
BIN URI: BOLD:ACG6542



CNCHYM 014860 [Lateral]  
Syrphoctonus signatus  
BIN URI: BOLD:AAH2172



10PHMAL-3230 [Lateral]  
Orthocentrus  
BIN URI: BOLD:AAU8218



BIOUG07192-F05 [Lateral]  
Plectiscidea  
BIN URI: BOLD:AAF4291



ASGLE-0285 [Lateral]  
Hymenoptera  
BIN URI: BOLD:AAP6689



BIOUG03129-G06 [Lateral]  
Stenomacrus  
BIN URI: BOLD:ACE4848



BIOUG04643-C02 [Lateral]  
Stenomacrus  
BIN URI: BOLD:ACG2500



BIOUG04095-B06 [Lateral]  
Stenomacrus  
BIN URI: BOLD:ACG3877



ASGLE-0216 [Lateral]  
Hymenoptera  
BIN URI: BOLD:AAU8582



BIOUG16146-F02 [Dorsal]  
Eruga  
BIN URI: BOLD:ACX3532



BIOUG06357-C12 [Lateral]  
Mymaridae  
BIN URI: BOLD:ACJ0404



BIOUG05848-A10 [Lateral]  
Polynema  
BIN URI: BOLD:ACI4023



BIOUG16049-G11 [Dorsal]  
Mymaridae  
BIN URI: BOLD:ACP9287



BIOUG14476-A06 [Lateral]  
Platygastridae  
BIN URI: BOLD:AAU9340



08BBHYM-1149 [Lateral]  
Telenomus  
BIN URI: BOLD:ADB4245



BIOUG10410-G12 [Lateral]  
Asaphes  
BIN URI: BOLD:AAG3136



BIOUG03482-E06 [Lateral]  
Thinodytes  
BIN URI: BOLD:ABY3237



BIOUG04095-A03 [Lateral]  
Pteromalidae  
BIN URI: BOLD:ABZ9561



09BBHYM-075 [Lateral]  
Vesputa pennsylvanica  
BIN URI: BOLD:AAG8042



CNCLP00040356 [Dorsal]  
Plutella xylostella  
BIN URI: BOLD:AAA1513



BIOUG21986-C04 [Dorsal]  
Limothrips denticornis  
BIN URI: BOLD:ACF7004

Copyright © 2014 BOLD Systems. All rights reserved.