

Image Library - SEARCH: Process ids(98 ids)

Print

Parameters

Records Included: All records
 Filter Image by Orientation: None
 Aspect Ratio: Normalized 3:2

Result Summary

Total Records: 98

Re-render images: per row

5000 Records Per Page - Pages: 1



BIOUG06001-A03 [Dorsal]
 Apolophanes margareta
 BIN URI: BOLD:AAP3827



BIOUG03561-E04 [Dorsal]
 Bassaniana utahensis
 BIN URI: BOLD:AAF0365



BIOUG12605-A11 [Dorsal]
 Xysticus elegans
 BIN URI: BOLD:AAC1568



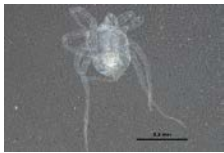
BIOUG01649-E04 [Lateral]
 Ascidae
 BIN URI: BOLD:ABW2698



BIOUG01238-F12 [Dorsal]
 Anystidae
 BIN URI: BOLD:ABW2639



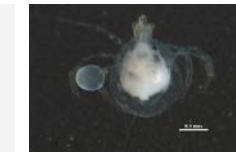
BIOUG02050-G03 [Dorsal]
 Anystidae
 BIN URI: BOLD:ABW5642



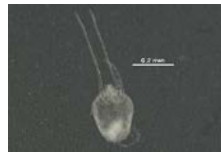
BIOUG25555-A01 [Dorsal]
 Trombidiformes
 BIN URI: BOLD:ACY1153



BIOUG22199-G09 [Dorsal]
 Trombidiformes
 BIN URI: BOLD:ACW4337



BIOUG20544-D05 [Dorsal]
 Pionidae
 BIN URI: BOLD:ACH2794



BIOUG31078-B03 [Dorsal]
 Tetranychidae
 BIN URI: BOLD:ADE3301



BIOUG00560-26 [Lateral]
 Entomobryidae
 BIN URI: BOLD:AAE2976



10BBCOL-0014 [Dorsal]
 Mulsantina picta
 BIN URI: BOLD:AAM7729



BIOUG05507-E08 [Dorsal]
 Trixagus carnicollis
 BIN URI: BOLD:AA6148



BIOUG03232-G05 [Dorsal]
 Trixagus sericeus
 BIN URI: BOLD:ACC2430



BIOUG10948-D10 [Dorsal]
 Forficula auricularia-B
 BIN URI: BOLD:AAE0456



BIOUG01428-B12 [Lateral]
 Anthomyiidae
 BIN URI: BOLD:AAG1708



BIOUG01544-C05 [Lateral]
 Anthomyia
 BIN URI: BOLD:AAP2970



BIOUG07402-H08 [Lateral]
 Delia
 BIN URI: BOLD:AAG2472



BIOUG04188-A12 [Lateral]
 Pegomya
 BIN URI: BOLD:ACD2294



BIOUG04468-C04 [Lateral]
 Cecidomyiidae
 BIN URI: BOLD:ACD2917



BIOUG14573-H02 [Lateral]
 Ceratopogonidae
 BIN URI: BOLD:AAG6519



09BBDIP-1719 [Dorsal]
 Chaoborus
 BIN URI: BOLD:AAG5462



09BBDIP-2093 [Lateral]
 Chironomus
 BIN URI: BOLD:AAB7030



08BBDIP-1888 [Lateral]
 Chironomus
 BIN URI: BOLD:AAG5472



10BBDIP-0656 [Lateral]
 Chironomus
 BIN URI: BOLD:ADD4190



BIOUG16100-A02 [Lateral]
 Paratanytarsus
 BIN URI: BOLD:ACP9283



TDWG-0722 [Lateral]
 Chironomidae
 BIN URI: BOLD:AA5391



BIOUG02758-C08 [Dorsal]
 Chironominae
 BIN URI: BOLD:AAG5506



BIOUG13915-G11 [Lateral]
 Chironominae
 BIN URI: BOLD:ACB9392



BIOUG16100-B05 [Lateral]
 Chironominae
 BIN URI: BOLD:ACP9307



BIOUG10601-D09 [Lateral]



BIOUG00942-G04 [Lateral]



BIOUG20601-A05 [Lateral]



BIOUG05504-B10 [Lateral]



BIOUG01623-D05 [Lateral]



BIOUG21770-A06 [Lateral]

Limnophyes schnelli
BIN URI: BOLD:AAC9278



BIOUG07117-G09 [Lateral]
Orthocladinae
BIN URI: BOLD:ACI3379

Limnophyes
BIN URI: BOLD:AAN5339



CHIR_CH654 [Whole Specimen]
Procladius sp. 1ES
BIN URI: BOLD:AAG3920

Limnophyes sp. 14ES
BIN URI: BOLD:ABU5525



BIOUG01243-E02 [Lateral]
Chloropidae
BIN URI: BOLD:ACO2366

Limnophyes
BIN URI: BOLD:ABW2734



CNC DIPTERA 163654 [Lateral]
Medetera sp. SEB5
BIN URI: BOLD:ACA1124

Smittia sp. 8ES
BIN URI: BOLD:ACP4736



BIOUG04244-C03 [Lateral]
Dolichopodidae
BIN URI: BOLD:ACD1100

Smittia sp. 14ES
BIN URI: BOLD:ACW5117



CCDB-21401-B02 [Lateral]
Sullia limbata
BIN URI: BOLD:AAP8074



BIOUG06197-G02 [Lateral]
Sullia loewi
BIN URI: BOLD:AAG0470



CNC DIPTERA 163535 [Lateral]
Platypalpus sp. 19
BIN URI: BOLD:ABY3127



BIOUG03702-B04 [Lateral]
Coenosia pilosissima
BIN URI: BOLD:AAP6478



BIOUG07268-H09 [Lateral]
Helina
BIN URI: BOLD:ACA4990



BIOUG08066-D06 [Lateral]
Helina
BIN URI: BOLD:ACE8833



BIOUG07588-D11 [Lateral]
Helina
BIN URI: BOLD:ACG5222



BIOUG03604-F08 [Lateral]
Phaonia pallidosa
BIN URI: BOLD:ACC6781



BIOUG05530-B06 [Lateral]
Phaonia tuguniorum
BIN URI: BOLD:AAL2750



BIOUG04553-F02 [Lateral]
Exechia
BIN URI: BOLD:ACD9501



BIOUG01338-E07 [Lateral]
Mycetophila fungorum
BIN URI: BOLD:ACF2821



BIOUG03038-A02 [Lateral]
Mycetophila
BIN URI: BOLD:AAG4978



BIOUG31078-H02 [Dorsal]
Pallopteridae
BIN URI: BOLD:ADE2818



BIOUG23680-B03 [Lateral]
Megaselia
BIN URI: BOLD:ACM1802



BIOUG01306-E07 [Lateral]
Megaselia
BIN URI: BOLD:AAN8700



BIOUG16098-A02 [Lateral]
Megaselia
BIN URI: BOLD:ACI8154



BIOUG26490-B10 [Lateral]
Megaselia
BIN URI: BOLD:ACZ4279



CCDB-23301-B01 [Lateral]
Chalarus spurius
BIN URI: BOLD:AAG1657



09BBDIP-1180 [Lateral]
Psychoda
BIN URI: BOLD:AAF9309



BIOUG01303-G07 [Lateral]
Psychodidae
BIN URI: BOLD:AAZ5592



BIOUG01392-A02 [Lateral]
Bradysia placida
BIN URI: BOLD:ACR4350



BIOUG05504-G10 [Lateral]
Bradysia trivittata
BIN URI: BOLD:ABA6488



BIOUG02308-D01 [Lateral]
Bradysia
BIN URI: BOLD:ABX3194



BIOUG07887-E12 [Lateral]
Scatopsiara atomaria
BIN URI: BOLD:AAH3920



BIOUG08223-E07 [Lateral]
Heringia calcarata
BIN URI: BOLD:AAP8758



BIOUG06864-D09 [Dorsal]
Anthocoris antevolens
BIN URI: BOLD:ACU7840



BIOUG05562-G07 [Dorsal]
Orius majusculus
BIN URI: BOLD:ABA5781



BIOUG01643-A11 [Lateral]
Nasonovia
BIN URI: BOLD:ACE7723



NIBGE APH-001163 [Dorsal]
Rhopalosiphum padi
BIN URI: BOLD:AAA9899



BIOUG16063-D09 [Lateral]
Empoasca
BIN URI: BOLD:AAN8406



BIOUG16008-A03 [Dorsal]
Typhlocyba
BIN URI: BOLD:ACP9264



BIOUG08648-G07 [Dorsal]
Typhlocyba ulmiphagus
BIN URI: BOLD:ACJ7184



CNC#HEM303618 [Dorsal]
Nabis americanus
BIN URI: BOLD:AAB8143



BIOUG02585-C02 [Lateral]
Bethyidae
BIN URI: BOLD:ACA5087



BIOUG01309-B11 [Lateral]
Encyrtidae
BIN URI: BOLD:ABX2601



BIOUG16132-D10 [Dorsal]
Encyrtidae
BIN URI: BOLD:ACP9621



BIOUG31078-C07 [Lateral]
Tetrastichinae
BIN URI: BOLD:ADE1324



BIOUG10676-C12 [Lateral]
Formica lasioides
BIN URI: BOLD:AAE0407



BIOUG16099-D11 [Lateral]
Stenamma
BIN URI: BOLD:ACP7990



BIOUG00861-F07 [Lateral]
Gelis sp.
BIN URI: BOLD:AAA6280



10BBHYM-1192 [Lateral]
Ichneumonidae
BIN URI: BOLD:AAN7899



BIOUG02641-B01 [Lateral]
Ichneumonidae
BIN URI: BOLD:AAU9392



BIOUG00991-F10 [Lateral]
Hymenoptera
BIN URI: BOLD:AAC3876



BIOUG16153-B11 [Lateral]
Orthocentrinae
BIN URI: BOLD:ACP7752



10BBCHY-0923 [Lateral]
Scambus
BIN URI: BOLD:ACE6645



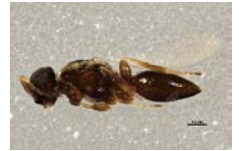
BIOUG04179-F04 [Lateral]
Pimplinae
BIN URI: BOLD:ACB1611



BIOUG22081-A10 [Lateral]
Scelioninae
BIN URI: BOLD:AAU9193



BIOUG21773-A10 [Lateral]
Scelioninae
BIN URI: BOLD:ACC5761



BIOUG04641-F01 [Lateral]
Platygastridae
BIN URI: BOLD:ACE2770



BIOUG07040-F10 [Lateral]
Platygastridae
BIN URI: BOLD:ACI9074



BIOUG00914-G09 [Lateral]
Hymenoptera
BIN URI: BOLD:AAN8216



CCDB-22972-G12 [Dorsal]
Chionodes sp.
BIN URI: BOLD:ACE5303



CNCLEP00133093 [Dorsal]
Gelechiidae
BIN URI: BOLD:ACR7069



BIOUG05354-G08 [Dorsal]
Stigmella
BIN URI: BOLD:ACB2708



BIOUG07782-C12 [Dorsal]
Ephestiodes gilvescentella
BIN URI: BOLD:AAA2650



FPSO-000111 [Dorsal]
Lepinotus reticulatus
BIN URI: BOLD:ACM2555



08-JDWC-0053 []
Hydroptila sp. BIOUG02
BIN URI: BOLD:AAH3358

Copyright © 2014 BOLD Systems. All rights reserved.