

# Image Library - SEARCH: Process ids(98 ids)

Print

## Parameters

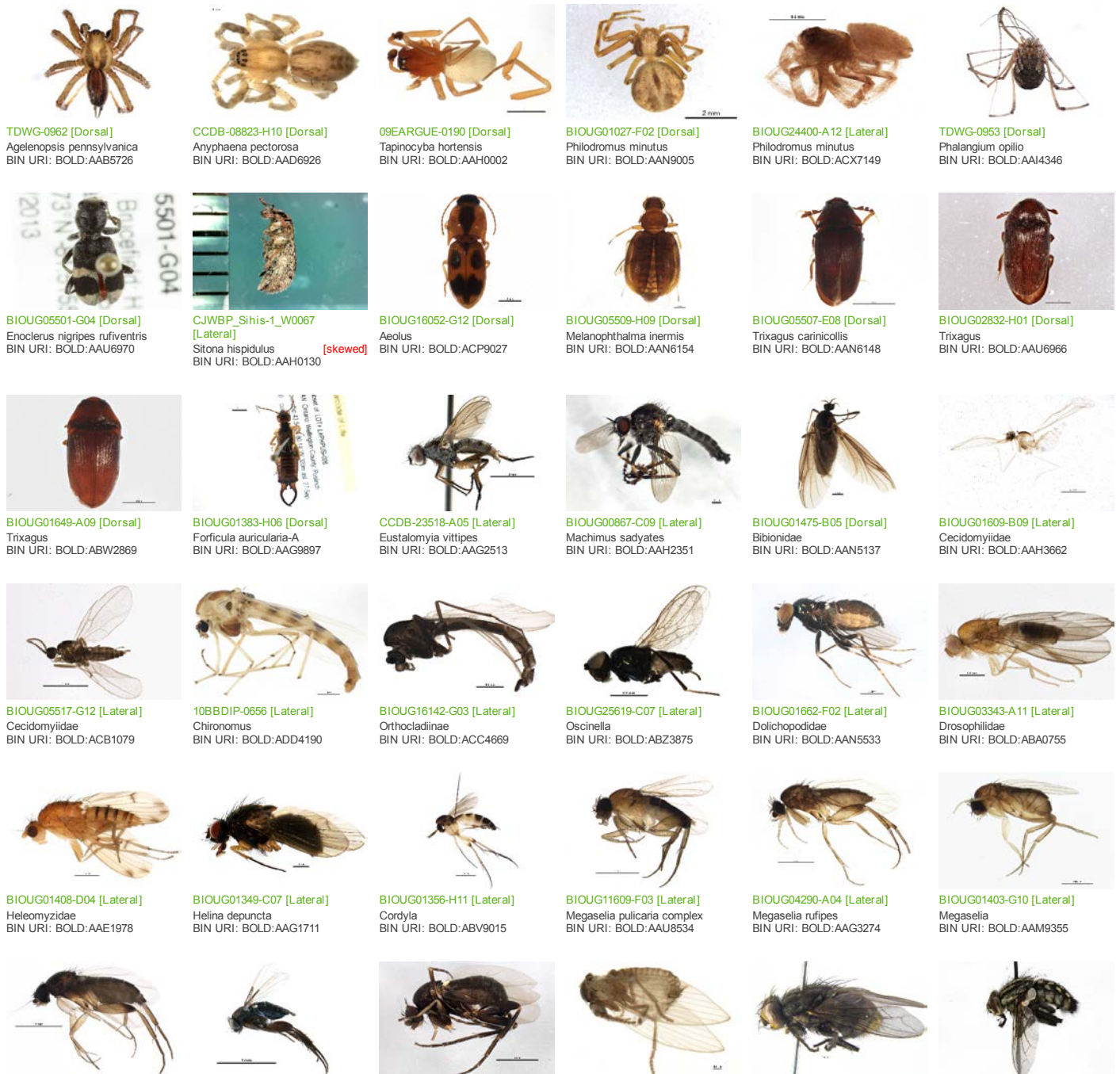
Records Included: All records  
 Filter Image by Orientation: None  
 Aspect Ratio: Normalized 3:2

## Result Summary

Total Records: 98

Re-render images:  per row

5000 Records Per Page - Pages: 1



BIOUG22295-E03 [Lateral]  
Megaselia  
BIN URI: BOLD: AAN8693



10JSROW-1277 [Lateral]  
Scathophaga stercoraria  
BIN URI: BOLD: AAD0853

BIOUG28751-C07 [Lateral]  
Phalacrotophora halictorum  
BIN URI: BOLD: ACL7859



BIOUG22328-C12 [Lateral]  
Bradysia urticae  
BIN URI: BOLD: AAY6412

BIOUG01459-D09 [Lateral]  
Conicera  
BIN URI: BOLD: AAG3236



BIOUG14353-E05 [Lateral]  
Corynoptera perpusilla  
BIN URI: BOLD: AAN6447

BIOUG01303-G07 [Lateral]  
Psychodidae  
BIN URI: BOLD: AAZ5592



BIOUG04307-G10 [Lateral]  
Leptosciarella scutellata  
BIN URI: BOLD: ACD1218

BIOUG03680-H03 [Lateral]  
Oxysarcodexia  
BIN URI: BOLD: AAH7142



BIOUG21949-D07 [Lateral]  
Sciariidae  
BIN URI: BOLD: ABA6409

GUE06-FLY-094 [Lateral]  
Diptera  
BIN URI: BOLD: AAG6743



DP-OUBS-0070 [Lateral]  
Plecticus trivittatus  
BIN URI: BOLD: AAC9839



CNC DIPTERA 192379 [Lateral]  
Tipula paludosa  
BIN URI: BOLD: AAE7386



BIOUG02097-E09 [Lateral]  
Acanalonia conica  
BIN URI: BOLD: AAJ5015



BIOUG03439-C11 [Lateral]  
Aleyrodiidae  
BIN URI: BOLD: AAZ8500



BIOUG16071-F08 [Lateral]  
Anocia  
BIN URI: BOLD: ACJ3864



BIOUG01107-D10 [Lateral]  
Nearctaphis crataegifoliae  
BIN URI: BOLD: ACF1270



BIOUG03342-C06 [Dorsal]  
Balclutha abdominalis  
BIN URI: BOLD: AAN8243



BIOUG00901-F09 [Lateral]  
Osbornellus auronitens  
BIN URI: BOLD: AAO4039



BIOUG00947-H02 [Lateral]  
Dikraneura  
BIN URI: BOLD: AAZ2090



BIOUG00941-H11 [Lateral]  
Empoasca  
BIN URI: BOLD: ABZ4247



BIOUG03040-B05 [Lateral]  
Empoasca  
BIN URI: BOLD: ACF5026



BIOUG03768-A07 [Lateral]  
Empoasca  
BIN URI: BOLD: ACV5620



BIOUG00658-H04 [Lateral]  
Eratoneura flexibilis  
BIN URI: BOLD: AAZ8496



BIOUG00935-A05 [Lateral]  
Erythrulida wysongi  
BIN URI: BOLD: AAN8287



BIOUG00771-B11 [Dorsal]  
Erythroneura  
BIN URI: BOLD: AAZ0166



BIOUG21697-A06 [Dorsal]  
Forcipata loca  
BIN URI: BOLD: ACC8165



BIOUG02053-F10 [Dorsal]  
Arhyssus  
BIN URI: BOLD: AAE6245



CCDB-21316-G01 [Dorsal]  
Corythucha marmorata  
BIN URI: BOLD: AAR9127



06745D02-ON [Lateral]  
Ceratina calcarata  
BIN URI: BOLD: AAA2368



BIOUG00836-D05 [Lateral]  
Asobara  
BIN URI: BOLD: ACF3747



BIOUG04326-F07 [Lateral]  
Dinotrema  
BIN URI: BOLD: ACD3088



BIOUG01252-F01 [Lateral]  
Aphidius  
BIN URI: BOLD: AAD6802



BIOUG07132-D12 [Lateral]  
Aphidiinae  
BIN URI: BOLD: ACF4030



BIOUG03770-D07 [Lateral]  
Blacus stelfoxi  
BIN URI: BOLD: AAZ9744



PCPP10-0477 [Lateral]  
Macrocentrus  
BIN URI: BOLD: AAN8193



BIOUG24351-F05 [Lateral]  
Chrysis cembricola  
BIN URI: BOLD: ACL8016



BIOUG08497-C04 [Lateral]  
Brachymyrmex  
BIN URI: BOLD: ACJ7166



TDWG-0455 [Lateral]  
Camponotus pennsylvanicus  
BIN URI: BOLD: AAA9461



BIOUG06760-E10 [Lateral]  
Fomica incerta  
BIN URI: BOLD: AAA1467



ASGLE-0071 [Lateral]  
Lasius  
BIN URI: BOLD: AAC8341



TDWG-0587 [Lateral]  
Prenolepis imparis  
BIN URI: BOLD: AAC1302



ASGLE-0861 [Lateral]  
Hymenoptera  
BIN URI: BOLD: AAC2392



BIOUG04836-C01 [Lateral]  
Myrmecina americana  
BIN URI: BOLD: ACF3099



09GUANTS-098 [Lateral]  
Myrmica AF-smi  
BIN URI: BOLD: AAA1840



Bee205 [Dorsal]  
Agapostemon virescens  
BIN URI: BOLD: AAB2708



BIOUG01283-E11 [Lateral]  
Lissonota coracina  
BIN URI: BOLD: AAG7794



BIOUG00861-F11 [Lateral]  
Cymodusa distincta  
BIN URI: BOLD: ABZ4363



BIOUG00910-D01 [Lateral]  
Hymenoptera  
BIN URI: BOLD: ABZ4364



BIOUG00858-F07 [Lateral]  
Cryptus  
BIN URI: BOLD: ACF3458



BIOUG00854-G07 [Lateral]  
Cryptinae  
BIN URI: BOLD: AAG7710



BIOUG00857-C02 [Lateral]  
Cryptinae  
BIN URI: BOLD: AAW0431



BIOUG00914-H10 [Lateral]  
Ichneumonidae  
BIN URI: BOLD: AAU8205



10BBCHY-2751 [Lateral]  
Perilampus  
BIN URI: BOLD: AAN8152



BIOUG01281-F03 [Lateral]  
Auplopus nigrellus  
BIN URI: BOLD:AA7538



09BBEHY-0601 [Lateral]  
Ancistrocerus adiabatus  
BIN URI: BOLD:AAC5428



BIOUG01023-G08 [Lateral]  
Polistes fuscatus  
BIN URI: BOLD:AAA6508



jflandry1226 [Dorsal]  
Crambus praefectellus  
BIN URI: BOLD:AAA3654



CGWC-3689 [Dorsal]  
Idia americalis  
BIN URI: BOLD:AAA2087



RBMIS-1101 [Dorsal]  
Hypena scabra  
BIN URI: BOLD:AAA4222



BIOUG26826-E01 [Dorsal]  
Agrotis  
BIN URI: BOLD:ACF0067



CGWC-0116 [Lateral]  
Agrotis venerabilis  
BIN URI: BOLD:ABZ1938



CNCLEP00084084.1 [Dorsal]  
Nephelodes minians  
BIN URI: BOLD:AAA5081



CMAZ-0061 [Dorsal]  
Spodoptera frugiperda sp. 2  
BIN URI: BOLD:AAA4532



05-NCCC-454 [Dorsal]  
Sunira bicolorago  
BIN URI: BOLD:AAA4426



11ANIC-06928 [Dorsal]  
Pieris rapae  
BIN URI: BOLD:AAA2224



BIOUG01801-F11 [Lateral]  
Melanoplus punctulatus  
BIN URI: BOLD:ACF0478



BIOUG00771-D02 [Lateral]  
Ectopsocus meridionalis  
BIN URI: BOLD:AAM8931

Copyright © 2014 BOLD Systems. All rights reserved.