

## Image Library - SEARCH: Process ids(72 ids)

Print

## Parameters

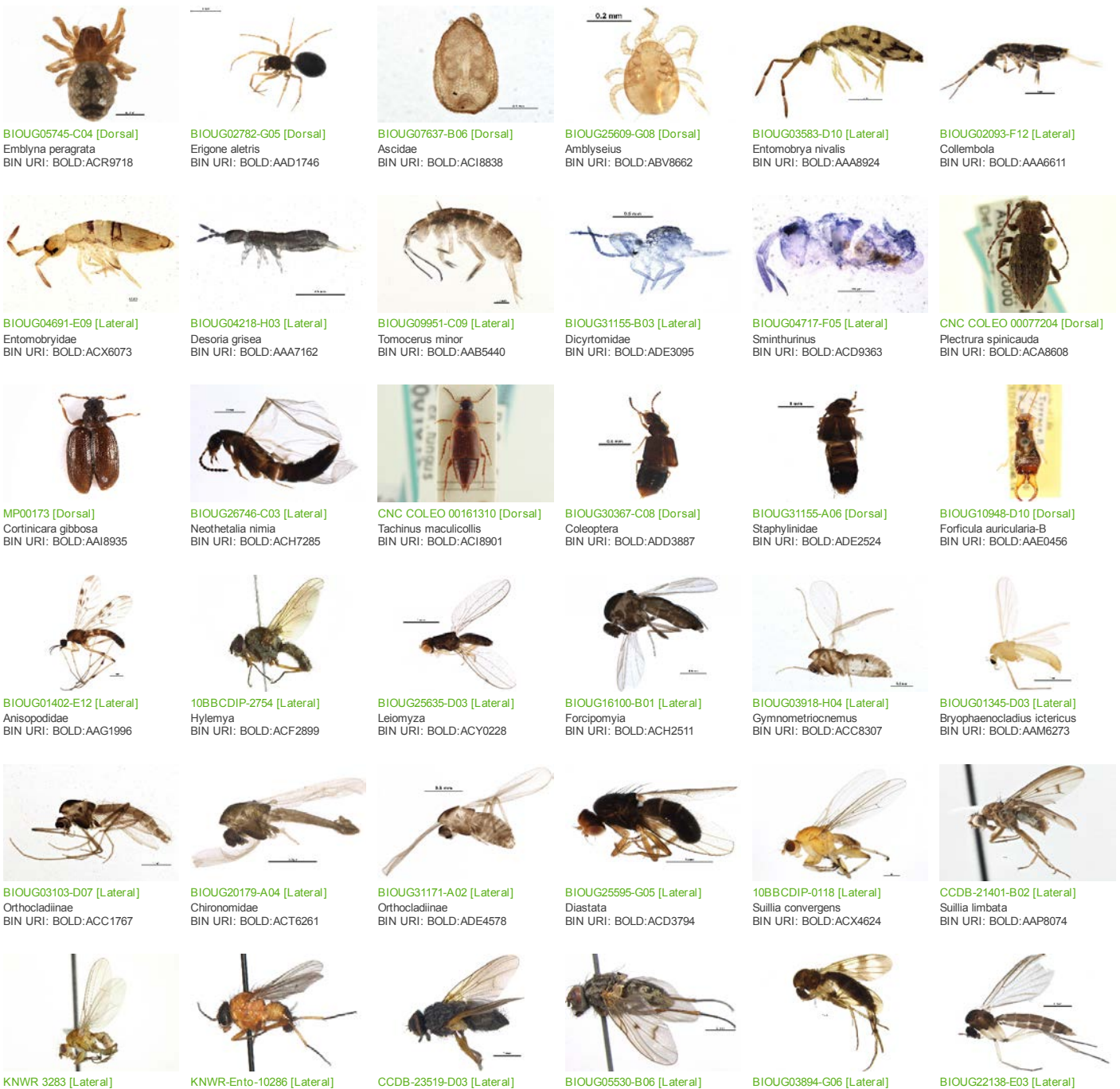
Records Included: All records  
 Filter Image by Orientation: None  
 Aspect Ratio: Normalized 3:2

## Result Summary

Total Records: 72

Re-render images:  per row

5000 Records Per Page - Pages: 1



*Suillia convergens*  
BIN URI: BOLD:AAV8347



BIOUG01122-B08 [Lateral]  
*Megaselia fungivora*  
BIN URI: BOLD:AAM9346

*Thricops diaphanus*  
BIN URI: BOLD:AAG1710



BIOUG01306-E07 [Lateral]  
*Megaselia*  
BIN URI: BOLD:AAN8700

*Mydaea brevipilosa*  
BIN URI: BOLD:AAG1779



BIOUG26490-B10 [Lateral]  
*Megaselia*  
BIN URI: BOLD:ACZ4279

*Phaonia tugariorum*  
BIN URI: BOLD:AAL2750



BIOUG08898-E03 [Lateral]  
*Scathophaga furcata*  
BIN URI: BOLD:ACX4405

*Mycetophila*  
BIN URI: BOLD:AAV4006



BIOUG01392-A02 [Lateral]  
*Bradyzia placida*  
BIN URI: BOLD:ACR4350

*Mycetophilidae*  
BIN URI: BOLD:ACV7781



BIOUG03497-B06 [Lateral]  
*Claustropyga acanthostyla*  
BIN URI: BOLD:AAP6467



BIOUG04600-D09 [Lateral]  
*Claustropyga acanthostyla*  
BIN URI: BOLD:ACD1715



10JSROW-1722 [Lateral]  
*Corynoptera melanochaeta*  
BIN URI: BOLD:AAM9242



BIOUG01117-F06 [Lateral]  
*Cratyna uliginosoides*  
BIN URI: BOLD:AAN6446



10BBCHEM-0381 [Lateral]  
*Nearcaphys sensoriata*  
BIN URI: BOLD:AAG3602



BIOUG16125-C03 [Dorsal]  
*Chaitophorus*  
BIN URI: BOLD:AAH2856



10BBCHEM-0759 [Lateral]  
*Balclutha rhenana*  
BIN URI: BOLD:AAG9373



BIOUG02286-E11 [Dorsal]  
*Dikraneura mali*  
BIN URI: BOLD:AAO8340



BIOUG00771-A11 [Lateral]  
*Empoasca decipiens*  
BIN URI: BOLD:AAV6741



BIOUG05821-D12 [Lateral]  
*Empoasca*  
BIN URI: BOLD:ACI4025



BIOUG03258-D09 [Lateral]  
*Empoasca*  
BIN URI: BOLD:AAN5445



BIOUG00947-A01 [Lateral]  
*Typhlocyba rosae*  
BIN URI: BOLD:ABA5828



BIOUG07143-G10 [Lateral]  
*Exothecinae*  
BIN URI: BOLD:AAH7214



BIOUG31155-E04 [Lateral]  
*Braconidae*  
BIN URI: BOLD:ADE2668



10BBCHY-2954 [Dorsal]  
*Diapriidae*  
BIN URI: BOLD:AAU8992



BIOUG04232-G11 [Lateral]  
*Diapriidae*  
BIN URI: BOLD:ABX5764



KNWR 7330 [Lateral]  
*Polyauton canadensis*  
BIN URI: BOLD:ACA7352



BIOUG06917-D12 [Lateral]  
*Cnypinae*  
BIN URI: BOLD:AAC8821



BIOUG06752-D09 [Lateral]  
*Orthocentrus fulvipes*  
BIN URI: BOLD:AAM9125



BIOUG05958-G09 [Lateral]  
*Plectiscus callidulus*  
BIN URI: BOLD:ACC8246



BIOUG01517-F06 [Lateral]  
*Proclitus praetor*  
BIN URI: BOLD:ABV2820



BIOUG04139-H03 [Lateral]  
*Orthocentrinae*  
BIN URI: BOLD:ACJ6556



BIOUG04232-F04 [Lateral]  
*Proctotrupidae*  
BIN URI: BOLD:ACC6877



BIOUG16603-A02 [Lateral]  
*Proctotrupidae*  
BIN URI: BOLD:ACR4463



CNCLPE00087632 [Dorsal]  
*Scoparia biplagiata*  
BIN URI: BOLD:AAA1518



BIOUG02796-H09 [Dorsal]  
*Leuctridae*  
BIN URI: BOLD:ACA8114



BIOUG04117-D05 [Lateral]  
*Valenzuela burmeisteri*  
BIN URI: BOLD:AAO4092



BIOUG04218-E11 [Lateral]  
*Valenzuela*  
BIN URI: BOLD:ACR3866



BIOUG01239-E11 [Lateral]  
*Graphopsocus cruciatus*  
BIN URI: BOLD:ACA2933



BIOUG03104-F09 [Lateral]  
*Cerobasis guestfalica*  
BIN URI: BOLD:ACX5665



08ABCAD-0115 [Lateral]  
*Onocosmoecus unicolor*  
BIN URI: BOLD:AAB2452