

Image Library - SEARCH: Process ids(73 ids)

Print

Parameters

Records Included: All records
 Filter Image by Orientation: None
 Aspect Ratio: Normalized 3:2

Result Summary

Total Records: 73

Re-render images: per row

5000 Records Per Page - Pages: 1



PF14-12-04 [Dorsal]
Sciastes truncatus
 BIN URI: BOLD:AAE9280



BIOUG01027-F04 [Dorsal]
Walckenaeria directa
 BIN URI: BOLD:AAH8313



BIOUG00516-E10 [Dorsal]
Pardosa moesta
 BIN URI: BOLD:AAB0863



BIOUG01892-F05 [Dorsal]
Ohlertidion ohlerti
 BIN URI: BOLD:AAF1548



BIOUG04202-C11 [Lateral]
Delia
 BIN URI: BOLD:ACC9953



BIOUG15573-F10 [Lateral]
Cynomyia cadaverina
 BIN URI: BOLD:AAB0868



BIOUG31174-F09 [Lateral]
Cecidomyiidae
 BIN URI: BOLD:ADE0447



BIOUG03578-H10 [Lateral]
Forcipomyia
 BIN URI: BOLD:ACB3306



BIOUG05515-B03 [Lateral]
Chironomus maturus
 BIN URI: BOLD:AAB4657



BIOUG05830-E12 [Lateral]
Microspectra subletteorum
 BIN URI: BOLD:AAF7088



BIOUG22117-E04 [Lateral]
Microspectra
 BIN URI: BOLD:ACC3825



BIOUG03474-A04 [Lateral]
Tanytarsus
 BIN URI: BOLD:ACC6674



BIOUG16914-H08 [Lateral]
Diamesinae
 BIN URI: BOLD:ACR4508



BIOUG04076-H07 [Lateral]
Chaetocladius
 BIN URI: BOLD:AAN5376



BIOUG31174-A09 [Lateral]
Chaetocladius
 BIN URI: BOLD:ADE4704



BIOUG04468-A04 [Lateral]
Diplocladius
 BIN URI: BOLD:ACD2920



BIOUG13059-B09 [Lateral]
Eukiefferiella claripennis
 BIN URI: BOLD:AAE4568



BIOUG03286-E02 [Lateral]
Metriocnemus
 BIN URI: BOLD:ACX6686



BIOUG25572-C01 [Lateral]
Orthocladius
 BIN URI: BOLD:ABX3879



BIOUG04327-D11 [Lateral]
Orthocladius
 BIN URI: BOLD:ACD2908



BIOUG22291-C11 [Lateral]
Parametriocnemus
 BIN URI: BOLD:AAN5348



BIOUG07092-B12 [Lateral]
Parametriocnemus
 BIN URI: BOLD:ACB1688



BIOUG02190-H01 [Lateral]
Rheocricotopus robacki
 BIN URI: BOLD:AAM6249



BIOUG03137-E01 [Lateral]
Smittia
 BIN URI: BOLD:ACB0946



BIOUG03356-A11 [Lateral]
Orthoclaudiinae
 BIN URI: BOLD:ACC6768



BIOUG31175-A03 [Lateral]
Orthoclaudiinae
 BIN URI: BOLD:ADE3642



BIOUG06415-C11 [Lateral]
Parochlus kiefferi
 BIN URI: BOLD:AAC1427



BIOUG22026-C12 [Lateral]
Scatophila cribrata
 BIN URI: BOLD:ACG1385



10BBCDIP-0118 [Lateral]
Suillia convergens
 BIN URI: BOLD:ACX4624



10BBCDIP-2166 [Lateral]
Suillia nemorum
 BIN URI: BOLD:ACX5303



BIOUG16133-D01 [Lateral]



BIOUG01459-C06 [Lateral]



CMNH575788 [Lateral]



BIOUG03777-A06 [Lateral]



BIOUG03495-G10 [Lateral]



BIOUG05526-A08 [Lateral]

Heleomyzidae
BIN URI: BOLD:ACI7629



BIOUG06556-B03 [Lateral]
Phronia cinerascens
BIN URI: BOLD:ABA2656

Lauxaniidae
BIN URI: BOLD:AAP6482



BIOUG31174-E08 [Lateral]
Mycetophilidae
BIN URI: BOLD:ADE1172

Dicranomyia moniliformis
BIN URI: BOLD:AAI1345



BIOUG01302-G01 [Lateral]
Megaselia
BIN URI: BOLD:ADA3072

Spilogona
BIN URI: BOLD:ACC1477



BIOUG01929-C04 [Lateral]
Megaselia
BIN URI: BOLD:AAG3255

Brevicornu
BIN URI: BOLD:ACB8886



BIOUG04555-F02 [Lateral]
Megaselia
BIN URI: BOLD:AAG3354

Mycetophila luctuosa
BIN URI: BOLD:AAG3628



BIOUG01932-G09 [Lateral]
Megaselia
BIN URI: BOLD:AAP6424



BIOUG04254-B06 [Lateral]
Psychoda phalaenoides
BIN URI: BOLD:AAF9317



BIOUG08898-E03 [Lateral]
Scathophaga furcata
BIN URI: BOLD:ACX4405



BIOUG06877-G02 [Lateral]
Lycoriella flavipeda
BIN URI: BOLD:AAL7869



BIOUG01349-F06 [Lateral]
Sepsis
BIN URI: BOLD:AAC2855



BIOUG01544-F11 [Lateral]
Simuliidae
BIN URI: BOLD:AAB1114



10BBCDIP-3050 [Lateral]
Simulium decorum
BIN URI: BOLD:ACZ4859



BIOUG31174-H09 [Lateral]
Rachispoda
BIN URI: BOLD:ADE4602



CCDB-21402-E10 [Lateral]
Spelobia semiculata
BIN URI: BOLD:ABX6678



BIOUG25618-E05 [Lateral]
Spelobia tufta
BIN URI: BOLD:AAL7755



BIOUG16036-A01 [Lateral]
Eupodes latifasciatus
BIN URI: BOLD:ACY1719



BIOUG31154-E08 [Lateral]
Graphogaster
BIN URI: BOLD:ADE0492



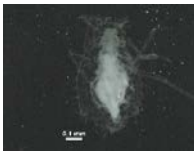
UAM:Ento:97198 [Dorsal]
Anthorcoris musculus
BIN URI: BOLD:AAF9945



BIOUG03026-C02 [Dorsal]
Eucephaphis gillettei
BIN URI: BOLD:AAD8929



BIOUG00947-F08 [Dorsal]
Chaitophorus neglectus
BIN URI: BOLD:AAB4394



BIOUG10275-E03 [Dorsal]
Chaitophorus pusillus
BIN URI: BOLD:AAD9343



10BBCHEM-0759 [Lateral]
Balclutha rhenana
BIN URI: BOLD:AAG9373



BIOUG03258-D09 [Lateral]
Empoasca
BIN URI: BOLD:AAN5445



ASGLE2-0196 [Lateral]
Braconidae
BIN URI: BOLD:AAG1244



BIOUG18141-E03 [Lateral]
Diapriidae
BIN URI: BOLD:ACS2123



BIOUG04326-E04 [Dorsal]
Eulophidae
BIN URI: BOLD:ACL8432



BIOUG04232-C08 [Lateral]
Eulophidae
BIN URI: BOLD:ACC7003



BIOUG01291-E11 [Lateral]
Diadegma nr. Fenestrata
BIN URI: BOLD:AAG7740



BIOUG00765-F07 [Lateral]
Ctenopelmatinae
BIN URI: BOLD:AAE7717



07PROBE-20032 [Lateral]
Stenomacrus
BIN URI: BOLD:AAH1506



10BBCHY-0093 [Lateral]
Orthocentrinae
BIN URI: BOLD:AAU9483



10BBCHY-0923 [Lateral]
Scambus
BIN URI: BOLD:ACE6645



07PROBE-23607 [Lateral]
Hercus fontinalis
BIN URI: BOLD:AAF1375



BIOUG11095-F01 [Lateral]
Megaspilidae
BIN URI: BOLD:ACF6761



BIOUG20757-F03 [Dorsal]
Epinotia radicana
BIN URI: BOLD:ACS0299



CNCLPEP00094059 [Dorsal]
Acleris emargana
BIN URI: BOLD:AAB3525



CSUPOBK-0697 [Dorsal]
Psychoglypha subborealis
BIN URI: BOLD:AAE0945