

Image Library - SEARCH: Process ids(129 ids)

Print

Parameters

Records Included: All records
 Filter Image by Orientation: None
 Aspect Ratio: Normalized 3:2

Result Summary

Total Records: 129

Re-render images: per row

5000 Records Per Page - Pages: 1



CCDB-08513-A05 [Dorsal]
Oxyopes salticus
 BIN URI: BOLD:AAG0083



BIOUG01238-F12 [Dorsal]
 Anystidae
 BIN URI: BOLD:ABW2639



11982-F11 [Lateral]
Lepidocyrtus
 BIN URI: BOLD:AAA8820



BIOUG04016-H04 [Lateral]
Bourletella
 BIN URI: BOLD:ACC0359



CNC COLEO 00252245 [Dorsal]
Anthicus cervinus
 BIN URI: BOLD:AAH2753



BIOUG00993-B09 [Lateral]
Longitarsus scutellaris
 BIN URI: BOLD:AAH6151



BIOUG05501-G04 [Dorsal]
Enoclerus nigripes rufiventris
 BIN URI: BOLD:AAU6970



CJWBP_Sihis-1_W0067 [Lateral]
Sitona hispidulus [skewed]
 BIN URI: BOLD:AAH0130



BIOUG05509-H09 [Dorsal]
Melanophthalma inermis
 BIN URI: BOLD:AAH6154



BIOUG03515-C08 [Dorsal]
Melanophthalma
 BIN URI: BOLD:AAP7026



BIOUG02603-A01 [Dorsal]
Cyphon obscurus
 BIN URI: BOLD:AAH0074



10PCCOL-0430 [Dorsal]
Coproporus ventriculus
 BIN URI: BOLD:AAP7842



BIOUG01383-H06 [Dorsal]
Forficula auricularia-A
 BIN URI: BOLD:AAG9897



BIOUG01460-G02 [Lateral]
 Agromyzae
 BIN URI: BOLD:AAD1945



BIOUG22416-A01 [Lateral]
Cerodontha muscina
 BIN URI: BOLD:AAF1051



BIOUG08682-B09 [Lateral]
Pseudonapomyza europaea
 BIN URI: BOLD:AAM6324



BIOUG05994-E10 [Lateral]
 Agromyzae
 BIN URI: BOLD:ACG5862



10JSROW-0823 [Lateral]
 Cecidomyiinae
 BIN URI: BOLD:AAH6591



BIOUG06928-F02 [Lateral]
 Cecidomyiidae
 BIN URI: BOLD:AAA1259



BIOUG23079-C12 [Lateral]
 Cecidomyiidae
 BIN URI: BOLD:AAG6460



BIOUG01307-H11 [Lateral]
 Cecidomyiidae
 BIN URI: BOLD:AAM6047



08TTML-1220 [Lateral]
 Cecidomyiidae
 BIN URI: BOLD:AAH5198



BIOUG01662-H02 [Lateral]
 Cecidomyiidae
 BIN URI: BOLD:ABA6448



BIOUG03066-B08 [Lateral]
 Cecidomyiidae
 BIN URI: BOLD:ABV1337



BIOUG03769-E05 [Lateral]
 Cecidomyiidae
 BIN URI: BOLD:ABW7897



BIOUG05508-B01 [Lateral]
 Cecidomyiidae
 BIN URI: BOLD:ABX0130



BIOUG16065-F12 [Lateral]
 Cecidomyiidae
 BIN URI: BOLD:ACK4716



BIOUG01423-C04 [Lateral]
 Ceratopogonidae
 BIN URI: BOLD:AAH5169



BIOUG03343-G02 [Lateral]
Dasyhelea
 BIN URI: BOLD:AAP5087



BIOUG01423-F06 [Lateral]
Forcipomyia bipunctata
 BIN URI: BOLD:AAH5148



09BBDIP-2093 [Lateral]
Chironomus
BIN URI: BOLD:AAB7030



BIOUG01801-F04 [Lateral]
Orthoclaadiinae
BIN URI: BOLD:ACP6694



BIOUG03138-F07 [Lateral]
Condylostylus
BIN URI: BOLD:AAD2041



CCDB-23519-H01 [Lateral]
Phaonia fuscana
BIN URI: BOLD:AAG1743



10PHMAL-1216 [Lateral]
Phora
BIN URI: BOLD:AAM9376



BIOUG01444-D03 [Lateral]
Bradyisia cellarum
BIN URI: BOLD:AAZ5626



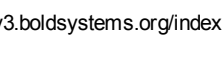
JSYKB-180 [Lateral]
Sphaerophoria
BIN URI: BOLD:AAA7374



CNC#HEM039328-1 [Dorsal]
Orius
BIN URI: BOLD:ACI3169



BIOUG05554-D09 [Lateral]
Ceratagallia sanguinolenta
BIN URI: BOLD:AAG2874



BIOUG22356-C06 [Lateral]
Microtendipes pedellus
BIN URI: BOLD:AAE0707



BIOUG22292-G10 [Lateral]
Orthoclaadiinae
BIN URI: BOLD:ACX5521



BIOUG01408-D04 [Lateral]
Heleomyzidae
BIN URI: BOLD:AAE1978



BIOUG03824-H03 [Lateral]
Megaselia
BIN URI: BOLD:AAG3275



BIOUG01459-D09 [Lateral]
Conicera
BIN URI: BOLD:AAG3236



BIOUG01116-B12 [Lateral]
Bradyisia lembkei
BIN URI: BOLD:AAQ0275



10BBDIP-1405 [Frontal]
Toxomerus marginatus
BIN URI: BOLD:AAA4277



BIOUG05609-E10 [Lateral]
Psyllidae
BIN URI: BOLD:ACF6531



BIOUG05554-F03 [Lateral]
Empoasca
BIN URI: BOLD:AAV0165



BIOUG22235-B08 [Lateral]
Tanytarsus glabrescens
BIN URI: BOLD:AAD8855



BIOUG01400-C01 [Lateral]
Thaumatomyia
BIN URI: BOLD:AAH4135



BIOUG03828-H06 [Lateral]
Platypalpus stabilis
BIN URI: BOLD:AAM6655



BIOUG05720-B11 [Lateral]
Megaselia
BIN URI: BOLD:AAP4687



BIOUG01411-G05 [Lateral]
Platystomatidae
BIN URI: BOLD:AAP8739



BIOUG01460-A04 [Lateral]
Bradyisia nitidicollis
BIN URI: BOLD:ABA6471



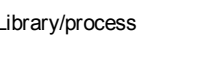
08TTML-0552 [Lateral]
Ptilodexia conjuncta
BIN URI: BOLD:AAG2147



TDWG-1115 [Dorsal]
Hemiptera
BIN URI: BOLD:AAH8408



BIOUG00947-A01 [Lateral]
Typhlocyba rosae
BIN URI: BOLD:ABA5828



BIOUG08375-B05 [Lateral]
Tanytarsus
BIN URI: BOLD:AAP5870



BIOUG01543-D12 [Lateral]
Incertella
BIN URI: BOLD:AAH5660



08TTML-1895 [Lateral]
Platypalpus
BIN URI: BOLD:AAH5504



BIOUG03437-C04 [Lateral]
Megaselia
BIN URI: BOLD:AAU5598



BIOUG01349-B05 [Lateral]
Boettcheria cimbicis
BIN URI: BOLD:AAG6756



BIOUG14353-E05 [Lateral]
Corynoptera perpusilla
BIN URI: BOLD:AAH6447



CNC DIPTERA 192379 [Lateral]
Tipula paludosa
BIN URI: BOLD:AAE7386



BIOUG27674-D08 [Lateral]
Uroleucon taraxaci
BIN URI: BOLD:ABY4763



BC-ZSM-HYM-20699-B05 [adult]
Centrodera
BIN URI: BOLD:ACI7773



BIOUG20601-A05 [Lateral]
Limnophyes sp. 14ES
BIN URI: BOLD:ABU5525



BIOUG14573-B01 [Lateral]
Chrysotus sp.
BIN URI: BOLD:AAG9668



08TTML-0842 [Lateral]
Hybotidae
BIN URI: BOLD:AAH5501



BIOUG23900-B01 [Lateral]
Megaselia
BIN URI: BOLD:ACX6055



GUE06-FLY-094 [Lateral]
Diptera
BIN URI: BOLD:AAG6743



BIOUG05367-E06 [Lateral]
Pullimosina pullula
BIN URI: BOLD:AAG7284



BIOUG01621-H08 [Lateral]
Aleyrodidae
BIN URI: BOLD:AAZ8499



CNC#HEM305533 [Lateral]
Fieberiella florii
BIN URI: BOLD:ACJ7053



BIOUG01665-E05 [Lateral]
Aphelinidae
BIN URI: BOLD:ABA5901



BIOUG05514-D06 [Lateral]
Paraphaenocladus impensus
BIN URI: BOLD:AAC4197



CCDB-23305-B07 [Lateral]
Doilichopus comatus
BIN URI: BOLD:AAV3887



BIOUG02272-G03 [Lateral]
Hybotidae
BIN URI: BOLD:ABX1590



BIOUG17998-G03 [Lateral]
Megaselia
BIN URI: BOLD:ACX6289



BIOUG22351-E11 [Lateral]
Scatopsidae
BIN URI: BOLD:AAV1136



DP-OUBS-0070 [Lateral]
Ptecticus trivittatus
BIN URI: BOLD:AAC9839



BIOUG03439-C11 [Lateral]
Aleyrodidae
BIN URI: BOLD:AAZ8500



BIOUG08430-G10 [Lateral]
Orientus ishidae
BIN URI: BOLD:ABX2622



BIOUG01795-E09 [Lateral]
Bethyidae
BIN URI: BOLD:AAU8628





BIIOUG08568-G07 [Lateral]
Dinotrema
BIN URI: BOLD:ABA6038



BIIOUG01605-G06 [Lateral]
Alysiinae
BIN URI: BOLD:AA8202



BIIOUG08643-F05 [Lateral]
Praon
BIN URI: BOLD:ACE2830



BIIOUG01327-E11 [Lateral]
Aphidiinae
BIN URI: BOLD:AAU8585



BIIOUG16052-F07 [Lateral]
Euphorinae
BIN URI: BOLD:ACP9679



ASGLE-0684 [Lateral]
Hymenoptera
BIN URI: BOLD:AAG1429



08TTML-0338 [Lateral]
Macrocentrus
BIN URI: BOLD:AAG7716



BIIOUG08647-G07 [Lateral]
Apanteles ensiger
BIN URI: BOLD:ACE6783



BIIOUG25479-C05 [Lateral]
Cotesia crambi
BIN URI: BOLD:AAH1026



BIIOUG00862-F06 [Lateral]
Cotesia
BIN URI: BOLD:AAG1401



ASGLE2-0234 [Lateral]
Hymenoptera
BIN URI: BOLD:AAU8736



BIIOUG08777-C09 [Lateral]
Diapriidae
BIN URI: BOLD:AAP6714



BIIOUG01309-A06 [Lateral]
Diapriidae
BIN URI: BOLD:AAU8712



BIIOUG00837-A01 [Lateral]
Copidosoma floridanum
BIN URI: BOLD:AAA7203



BIIOUG01598-B10 [Lateral]
Encyrtidae
BIN URI: BOLD:AAZ0175



BIIOUG09507-H05 [Lateral]
Encyrtidae
BIN URI: BOLD:ACK5989



BIIOUG01572-B09 [Lateral]
Eulophidae
BIN URI: BOLD:AAU8577



BIIOUG06544-B02 [Lateral]
Eucoilinae
BIN URI: BOLD:ACG3398



BIIOUG01624-C02 [Lateral]
Eucoilinae
BIN URI: BOLD:ACJ6781



MAS145-08c [Lateral]
Formica
BIN URI: BOLD:AAE0406



BIIOUG05507-D08 [Lateral]
Lasius neoniger
BIN URI: BOLD:AA99126



BIIOUG06760-A10 [Lateral]
Lasius subglaber
BIN URI: BOLD:ABZ0423



09BBEFO-0388 [Lateral]
Formica glacialis
BIN URI: BOLD:AAA1468



09GUANTS-141 [Lateral]
Myrmica detritinodis
BIN URI: BOLD:AAA1841



BIIOUG00861-F11 [Lateral]
Cymodusa distincta
BIN URI: BOLD:ABZ4363



06-PROBE-3188 [Lateral]
Diadegma sp. MAS BIN519
BIN URI: BOLD:AAG5779



07PROBE-22927 [Lateral]
Cryptinae
BIN URI: BOLD:AAE9438



BIIOUG16082-G11 [Lateral]
Megaspilidae
BIN URI: BOLD:ACK1665



BIIOUG08663-D05 [Lateral]
Megaspilidae
BIN URI: BOLD:ACN0444



BIIOUG01665-H07 [Lateral]
Anaphes
BIN URI: BOLD:AAZ0173



BIIOUG08412-B10 [Lateral]
Mymaridae
BIN URI: BOLD:ACK1874



BIIOUG20370-B09 [Lateral]
Gonatocerus
BIN URI: BOLD:ACU1736



BIIOUG03904-C12 [Lateral]
Mymaridae
BIN URI: BOLD:ABW3187



BIIOUG01757-A06 [Lateral]
Leptacis
BIN URI: BOLD:ABZ8208



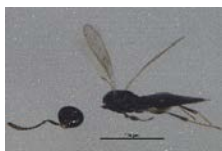
BIIOUG06544-G10 [Lateral]
Telenomus
BIN URI: BOLD:AA8001



BIIOUG09508-F06 [Lateral]
Telenomus
BIN URI: BOLD:AA8030



BIIOUG03740-F10 [Lateral]
Telenomus
BIN URI: BOLD:ACC8019



BIIOUG16060-F11 [Lateral]
Scellioninae
BIN URI: BOLD:ACP8190



CCDB-22978-A09 [Dorsal]
Bucculatrix pomifoliella
BIN URI: BOLD:AAD2085



jflandry1226 [Dorsal]
Crambus praefectellus
BIN URI: BOLD:AAA3654



BIIOUG07540-E10 [Dorsal]
Noctua pronuba
BIN URI: BOLD:AAA2632



BIIOUG02955-H05 [Dorsal]
Autographa precatonnis
BIN URI: BOLD:AAA3836



BIIOUG08646-D11 [Lateral]
Coniopteryx
BIN URI: BOLD:ACJ6860



10BBSIO-0116 [Lateral]
Valenzuela flavidus
BIN URI: BOLD:AAH3228



TDWG-0261 [Lateral]
Limnephilus submonilifer
BIN URI: BOLD:AAA3080

Copyright © 2014 BOLD Systems. All rights reserved.