

Image Library - SEARCH: Process ids(129 ids)

Print

Parameters

Records Included: All records
 Filter Image by Orientation: None
 Aspect Ratio: Normalized 3:2

Result Summary

Total Records: 129

Re-render images: per row

5000 Records Per Page - Pages: 1



BIOUG05648-B04 [Dorsal]
Collinsia plumosa
 BIN URI: BOLD:AAM9146



BIOUG02782-G05 [Dorsal]
Erigone aletris
 BIN URI: BOLD:AAD1746



09PROBE-1978-437 [Dorsal]
Grammonota gentilis
 BIN URI: BOLD:AAA9476



BIOUG01027-D12 [Dorsal]
Grammonota pictilis
 BIN URI: BOLD:AAD1498



09ONTGAB-053 [Dorsal]
Theridion murarium
 BIN URI: BOLD:AAC6350



BIOUG30422-B05 [Dorsal]
Asca
 BIN URI: BOLD:ADD1281



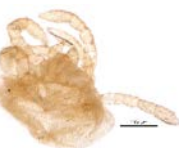
BIOUG05609-E12 [Dorsal]
Cheiroseius
 BIN URI: BOLD:AAN6642



BIOUG01238-E04 [Dorsal]
Cheiroseius
 BIN URI: BOLD:AAV0589



BIOUG31058-E11 [Dorsal]
Mesostigmata
 BIN URI: BOLD:ADE0452



BIOUG31058-E10 [Dorsal]
Calyptostomatidae
 BIN URI: BOLD:ADE4269



BIOUG03583-D10 [Lateral]
Entomobrya nivalis
 BIN URI: BOLD:AAA8924



10BBCOL-0074 [Dorsal]
Acalymma vittatum
 BIN URI: BOLD:AAF4335



BIOUG05551-A11 [Dorsal]
Crepidodera heikertingeri
 BIN URI: BOLD:AAG4462



BIOUG05520-C10 [Dorsal]
Phyllotreta striolata
 BIN URI: BOLD:AAL5267



BIOUG00828-C08 [Lateral]
Phyllotreta albionica
 BIN URI: BOLD:AAH0255



BIOUG02913-E01 [Dorsal]
Harmonia axyridis
 BIN URI: BOLD:AAB5640



CNC COLEO 00154327 [Dorsal]
Hippodamia tredecimpunctata tibialis
 BIN URI: BOLD:AAX1229



BIOUG02737-C11 [Dorsal]
Elychnia
 BIN URI: BOLD:AAF4976



MP00173 [Dorsal]
Corticara gibbosa
 BIN URI: BOLD:AAI8935



BIOUG05509-H09 [Dorsal]
Melanophthalma inermis
 BIN URI: BOLD:AAN6154



BIOUG00971-B09 [Dorsal]
Cyphon variabilis
 BIN URI: BOLD:ACX4619



BIOUG05567-B08 [Dorsal]
Amischa
 BIN URI: BOLD:ABA5313



BIOUG05690-G06 [Lateral]
Philonthus flavibasis
 BIN URI: BOLD:AAH0106



BIOUG00993-A10 [Lateral]
 Staphylinidae
 BIN URI: BOLD:ABW2844 [skewed]



08TTML-0977 [Lateral]
Liriomyza brassicae
 BIN URI: BOLD:AAF6806



08TTML-0519 [Lateral]
Botanophila profuga
 BIN URI: BOLD:ACP6334



08BBDIP-1038 [Lateral]
Phormia regina
 BIN URI: BOLD:AAB9140



BIOUG02722-C04 [Lateral]
Lucilia silvarum
 BIN URI: BOLD:AAG6746



BIOUG01553-A09 [Lateral]
 Cecidomyiidae
 BIN URI: BOLD:AAM6127



BIOUG05625-G04 [Lateral]
 Cecidomyiidae
 BIN URI: BOLD:AAP9021



BIOUG06432-D08 [Lateral]
Cecidomyiidae
BIN URI: BOLD:ACD1662



BIOUG16123-D12 [Lateral]
Cecidomyiidae
BIN URI: BOLD:ACP9392



BIOUG05992-C03 [Lateral]
Ceratopogonidae
BIN URI: BOLD:ACE1732



10PHMAL-1224 [Lateral]
Chironomus melanescens
BIN URI: BOLD:AAI4303



BIOUG22329-B05 [Lateral]
Tanytarsus wirthi
BIN URI: BOLD:AAD2144



BIOUG05514-D06 [Lateral]
Paraphaenocladus impensus
BIN URI: BOLD:AAC4197



BIOUG08660-C05 [Lateral]
Smittia edwardsi
BIN URI: BOLD:AAF4817



BIOUG06415-C11 [Lateral]
Parochlus kiefferi
BIN URI: BOLD:AAC1427



BIOUG20653-H08 [Lateral]
Ablabesmyia americana
BIN URI: BOLD:AAC8567



BIOUG01400-C01 [Lateral]
Thaumatomyia
BIN URI: BOLD:AAH4135



BIOUG01426-C08 [Lateral]
Elachiptera
BIN URI: BOLD:AAH4208



BIOUG01392-B07 [Lateral]
Culex territans
BIN URI: BOLD:AAB6943



BIOUG01818-A04 [Lateral]
Culiseta inornata
BIN URI: BOLD:AAC9132



09BBDIP-1583 [Lateral]
Aedes vexans
BIN URI: BOLD:AAA7067



BIOUG01352-B02 [Lateral]
Drosophila neotestacea
BIN URI: BOLD:AAC7070



BIOUG01408-D04 [Lateral]
Heleomyzidae
BIN URI: BOLD:AAE1978



CNC DIPTERA 105481 [Lateral]
Platypalpus unguiculatus [skewed]
BIN URI: BOLD:ABA0579



BIOUG00938-E11 [Lateral]
Dicranomyia frontalis
BIN URI: BOLD:ABA5203



CMNH575788 [Lateral]
Dicranomyia moniliformis
BIN URI: BOLD:AAI1345



BIOUG05549-H10 [Lateral]
Muscina pascuorum
BIN URI: BOLD:AAG1714



BIOUG03418-E02 [Lateral]
Muscina sp. 1 AKR
BIN URI: BOLD:AAB8818



08TTL-1053 [Lateral]
Lispocephala erythroera
BIN URI: BOLD:AAG1704



CCDB-23518-G08 [Lateral]
Helina aldrichi
BIN URI: BOLD:AAC2498



BIOUG01645-C06 [Lateral]
Phaonia
BIN URI: BOLD:ABU9891



BIOUG01931-B06 [Lateral]
Exechia
BIN URI: BOLD:ACX9220



BIOUG01338-E07 [Lateral]
Mycetophila fungorum
BIN URI: BOLD:ACF2821



BIOUG05324-C03 [Lateral]
Mycetophila
BIN URI: BOLD:AAG4872



BIOUG01400-B09 [Lateral]
Mycetophilidae
BIN URI: BOLD:AAG4893



BIOUG01522-D01 [Lateral]
Mycetophilidae
BIN URI: BOLD:AAP2525



BIOUG21089-A07 [Lateral]
Megaselia lucifrons
BIN URI: BOLD:AAL9075



BIOUG04290-A04 [Lateral]
Megaselia rufipes
BIN URI: BOLD:AAG3274



BIOUG01300-E09 [Lateral]
Megaselia
BIN URI: BOLD:AAP4685



BIOUG21982-F10 [Lateral]
Megaselia
BIN URI: BOLD:ACG4438



BIOUG24409-F09 [Lateral]
Megaselia
BIN URI: BOLD:ADA3720



BIOUG03369-B03 [Lateral]
Phoridae
BIN URI: BOLD:AAG3311



BIOUG02724-F07 [Lateral]
Psychodidae
BIN URI: BOLD:ABZ0621



BIOUG05504-G10 [Lateral]
Bradysia trivittata
BIN URI: BOLD:ABA6488



BIOUG03131-G12 [Lateral]
Bradysia trivittata
BIN URI: BOLD:ACB1143



BIOUG02981-F02 [Lateral]
Corynoptera cursor
BIN URI: BOLD:AAP6465



BIOUG06877-G02 [Lateral]
Lycoriella flavipeda
BIN URI: BOLD:AAL7869



BIOUG01659-D12 [Lateral]
Pseudolycoriella
BIN URI: BOLD:ABA6407



BIOUG07887-E12 [Lateral]
Scatopsiara atomaria
BIN URI: BOLD:AAH3920



BIOUG25626-B08 [Lateral]
Pullimosina heteroneura
BIN URI: BOLD:ACG0715



BIOUG25607-G02 [Lateral]
Rachispoda
BIN URI: BOLD:AAG7277



BIOUG05599-E07 [Lateral]
Capitophorus eleagni
BIN URI: BOLD:AAE3015



BIOUG01643-A11 [Lateral]
Nasonovia
BIN URI: BOLD:ACE7723



10BBCHEM-0559 [Lateral]
Dikraneura
BIN URI: BOLD:AAV0227



BIOUG00936-B03 [Lateral]
Hemiptera
BIN URI: BOLD:ABA8103



BIOUG21697-A06 [Dorsal]
Forcipata loca
BIN URI: BOLD:ACC8165



BIOUG01516-C05 [Lateral]
Ribautiana
BIN URI: BOLD:AA8410



BIOUG08659-F07 [Dorsal]
Typhlocybae
BIN URI: BOLD:ACP8819



BIOUG01012-C07 [Lateral]
Delphacinae
BIN URI: BOLD:AAC3517



CNC#HEM032700-8 [Dorsal]
Lygus lineolaris
BIN URI: BOLD:AAA5803



BIOUG01150-C09 [Dorsal]
Euschistus servus
BIN URI: BOLD:AAE0845



BIOUG03770-D07 [Lateral]
Blacus stelfoxi
BIN URI: BOLD:AAZ9744



BIOUG07537-A09 [Lateral]
Blacinae
BIN URI: BOLD:AAU8584



BIOUG16070-A01 [Lateral]
Euphorinae
BIN URI: BOLD:ACP8405



BIOUG08647-G07 [Lateral]
Apanteles ensiger
BIN URI: BOLD:ACE6783



BIOUG01291-E04 [Lateral]
Aleiodes
BIN URI: BOLD:ABA6045



BIOUG31059-B03 [Lateral]
Braconidae
BIN URI: BOLD:ADE0503



BIOUG01327-D08 [Lateral]
Diapriidae
BIN URI: BOLD:AAU9389



BIOUG25607-A02 [Lateral]
Diapriidae
BIN URI: BOLD:ABA8019



ASGLE-0552 [Lateral]
Hymenoptera
BIN URI: BOLD:AAU8478



BIOUG16416-H10 [Lateral]
Eulophidae
BIN URI: BOLD:ACB7962



ASGLE-0338 [Lateral]
Charipinae
BIN URI: BOLD:AAU8573



BIOUG16938-A03 [Lateral]
Charipinae
BIN URI: BOLD:ACR3976



09BBEFO-0388 [Lateral]
Formica glacialis
BIN URI: BOLD:AAA1468



ASGLE-0540 [Lateral]
Hymenoptera
BIN URI: BOLD:ACF3297



BIOUG00910-F11 [Lateral]
Ichneumonidae
BIN URI: BOLD:AAD4214



CNCHYM 014860 [Lateral]
Syrphoctonus signatus
BIN URI: BOLD:AAH2172



BIOUG31064-F12 [Lateral]
Coelichneumon
BIN URI: BOLD:ADE1592



BIOUG01037-C10 [Lateral]
Ichneumoninae
BIN URI: BOLD:AAU8234



07PROBE-20519 [Lateral]
Mesochorus sp. MAS BIN269
BIN URI: BOLD:AAG9511



BIOUG03336-F06 [Lateral]
Megastylus
BIN URI: BOLD:ACE4233



BIOUG04189-A11 [Lateral]
Orthocentrus
BIN URI: BOLD:ACM2706



BIOUG07192-F05 [Lateral]
Plectiscidea
BIN URI: BOLD:AAF4291



ASGLE-0216 [Lateral]
Hymenoptera
BIN URI: BOLD:AAU8582



10BBCHY-0923 [Lateral]
Scambus
BIN URI: BOLD:ACE6645



10PROBE-29375 [Lateral]
Probes
BIN URI: BOLD:ACF2205



BIOUG03697-G06 [Lateral]
Megaspilidae
BIN URI: BOLD:ACB0899



BIOUG11095-F01 [Lateral]
Megaspilidae
BIN URI: BOLD:ACF6761



BIOUG08663-D05 [Lateral]
Megaspilidae
BIN URI: BOLD:ACN0444



BIOUG03580-F03 [Lateral]
Mymaridae
BIN URI: BOLD:ACC4183



BIOUG14476-A06 [Lateral]
Platygastriidae
BIN URI: BOLD:AAU9340



BIOUG02619-F11 [Lateral]
Telenomus
BIN URI: BOLD:ABA6265



BIOUG10805-B02 [Lateral]
Platygastriidae
BIN URI: BOLD:ACL7995



BIOUG31059-D05 [Lateral]
Platygastriidae
BIN URI: BOLD:ADE3936



BC-ZSM-HYM-20720-B11 [Lateral]
Pteromalidae
BIN URI: BOLD:ACI9027



BIOUG11254-H01 [Lateral]
Pteromalidae
BIN URI: BOLD:ACM1360



BIOUG25593-A10 [Lateral]
Torymus chrysochlorus
BIN URI: BOLD:AA81822



jflandry1226 [Dorsal]
Crambus praefectellus
BIN URI: BOLD:AAA3654



BIOUG31058-G03 [Lateral]
Gnorimoschema
BIN URI: BOLD:ADE1196



CNCLPE00040530 [Dorsal]
Apotomis
BIN URI: BOLD:AAI4355



RWWA-2066 [Dorsal]
Acleris fragariana
BIN URI: BOLD:AAH4536



CNCLPE00101768 [Dorsal]
Acleris minuta
BIN URI: BOLD:AAE3758



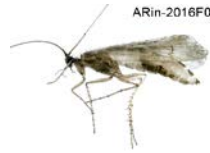
08BBNEU-018 [Lateral]
Hemerobius
BIN URI: BOLD:AAG0891



BI0UG25615-G11 [Lateral]
Micromus angulatus
BIN URI: BOLD:ACZ4162



TDWG-0261 [Lateral]
Limnephilus submonilifer
BIN URI: BOLD:AAA3080



ARin-2016F050 [Lateral]
Limnephilus sericeus
BIN URI: BOLD:AAA7041

Copyright © 2014 BOLD Systems. All rights reserved.