

Image Library - SEARCH: Process ids(112 ids)

Print

Parameters

Records Included: All records
 Filter Image by Orientation: None
 Aspect Ratio: Normalized 3:2

Result Summary

Total Records: 112

Re-render images: per row

5000 Records Per Page - Pages: 1



BIOUG06347-F11 [Dorsal]
Dictyna brevitarso
 BIN URI: BOLD: AAN2653



BIOUG01894-A08 [Dorsal]
Ceraticelus crassiceps
 BIN URI: BOLD: AAC1589



BIOUG02782-G05 [Dorsal]
Erigone aletris
 BIN URI: BOLD: AAD1746



BIOUG31083-B07 [Dorsal]
Philodromus vulgaris
 BIN URI: BOLD: ADE3960



BIOUG01027-E12 [Dorsal]
Pelegrina proterva
 BIN URI: BOLD: AAB2927



09ONTGAB-053 [Dorsal]
Theridion murarium
 BIN URI: BOLD: AAC6350



BIOUG07169-F11 [Dorsal]
Xysticus ferox
 BIN URI: BOLD: AAD1987



BIOUG01238-E04 [Dorsal]
Cheiroseius
 BIN URI: BOLD: AAV0589



BIOUG02050-H09 [Dorsal]
 Erythraeidae
 BIN URI: BOLD: AAN6614



BIOUG03583-D10 [Lateral]
Entomobrya nivalis
 BIN URI: BOLD: AAA8924



BIOUG03678-D11 [Lateral]
Entomobrya assuta
 BIN URI: BOLD: ACM2009



BIOUG00828-C08 [Lateral]
Phyllotreta albionica
 BIN URI: BOLD: AAH0255



BIOUG02913-E01 [Dorsal]
Harmonia axyridis
 BIN URI: BOLD: AAB5640



10BBCOL-0006 [Lateral]
Orchestes alni
 BIN URI: BOLD: AAM7726



CNC COLEO 00152912 [Dorsal]
Eucinetus terminalis
 BIN URI: BOLD: AAN6196



BIOUG05507-H02 [Dorsal]
 Corticarina
 BIN URI: BOLD: AAH0256



BIOUG04819-G11 [Dorsal]
Enicmus mimus
 BIN URI: BOLD: AAN5905



BIOUG00971-B09 [Dorsal]
Cyphon variabilis
 BIN URI: BOLD: ACX4619



BIOUG05567-B08 [Dorsal]
Amischa
 BIN URI: BOLD: ABA5313



BIOUG01082-E01 [Lateral]
Bledius
 BIN URI: BOLD: ADE2155



08TTML-0977 [Lateral]
Liriomyza brassicae
 BIN URI: BOLD: AAF6806



BIOUG05625-G04 [Lateral]
 Cecidomyiidae
 BIN URI: BOLD: AAP9021



08WOLVES-01258 [Lateral]
 Cecidomyiidae
 BIN URI: BOLD: AAU6757



HLC-26990 [Lateral]
Orthocladus sp. TE13
 BIN URI: BOLD: AAC0069



BIOUG05581-F11 [Lateral]
Psectrocladius barbimanus
 BIN URI: BOLD: AAD0484



BIOUG08660-C05 [Lateral]
Smittia edwardsi
 BIN URI: BOLD: AAF4817



BIOUG20691-C11 [Lateral]
Smittia sp. 14ES
 BIN URI: BOLD: AAM7064



BIOUG03137-E01 [Lateral]
Smittia
 BIN URI: BOLD: ACB0946



BIOUG01623-D05 [Lateral]
Smittia sp. 8ES
 BIN URI: BOLD: ACP4736



BIOUG21770-A06 [Lateral]
Smittia sp. 14ES
 BIN URI: BOLD: ACW5117



10JSROW-1409 [Lateral]



BIOUG05514-B08 [Lateral]



CCDB-23514-G12 [Lateral]



BIOUG01543-D12 [Lateral]



PROBE-TW0161 [Lateral]



BIOUG01338-E10 [Lateral]

Orthoclaadiinae
BIN URI: BOLD: AAN5342



14003-26 [Lateral]
Drosophila hydei
BIN URI: BOLD: AAE8119

Orthoclaadiinae
BIN URI: BOLD: ACU7906



BIOUG17727-E06 [Lateral]
Philotelma
BIN URI: BOLD: AAL8953

Elachiptera
BIN URI: BOLD: AAP5169



BIOUG21651-E06 [Lateral]
Crossopalpus setiger
BIN URI: BOLD: ACE6928

Incertella
BIN URI: BOLD: AAN5660



08TTL-0842 [Lateral]
Hybotidae
BIN URI: BOLD: AAN5501

Dolichopus plumipes
BIN URI: BOLD: AAG9616



BIOUG01392-A03 [Lateral]
Symplecta cana
BIN URI: BOLD: AAF9014

Sympycnus lineatus
BIN URI: BOLD: AAG9713



CMNH575788 [Lateral]
Dicranomyia moniliformis
BIN URI: BOLD: AAI1345



CCDB-23518-G08 [Lateral]
Helina aldrichi
BIN URI: BOLD: AAC2498



BIOUG01411-E08 [Lateral]
Mycetophilidae
BIN URI: BOLD: ABV9018



BIOUG21089-A07 [Lateral]
Megaselia lucifrons
BIN URI: BOLD: AAL9075



BIOUG11609-F03 [Lateral]
Megaselia pulicaria complex
BIN URI: BOLD: AAU8534



10BBCDIP-1351 [Lateral]
Megaselia
BIN URI: BOLD: AAG3352



BIOUG01403-G10 [Lateral]
Megaselia
BIN URI: BOLD: AAM9355



BIOUG04135-G09 [Lateral]
Megaselia
BIN URI: BOLD: ACA9765



BIOUG01360-E04 [Lateral]
Psychoda
BIN URI: BOLD: AAG3154



CCDB-23504-B08 [Lateral]
Sarcotachinella sinuata
BIN URI: BOLD: AAG3629



BIOUG01400-A01 [Lateral]
Coboldia fuscipes
BIN URI: BOLD: AAN8523



08BBDIP-2430 [Lateral]
Bradysia cellarum
BIN URI: BOLD: AAH3919



BIOUG05504-G10 [Lateral]
Bradysia trivittata
BIN URI: BOLD: ABA6488



BIOUG02936-E01 [Lateral]
Bradysia impatiens
BIN URI: BOLD: AAV1295



BIOUG02981-F02 [Lateral]
Corynoptera cursor
BIN URI: BOLD: AAP6465



BIOUG18382-E01 [Lateral]
Cratyna brachialis
BIN URI: BOLD: AAL7889



BIOUG06877-G02 [Lateral]
Lycoriella flavipeda
BIN URI: BOLD: AAL7869



09BBDIP-0947 [Lateral]
Lycoriella
BIN URI: BOLD: AAH3941



BIOUG07887-E12 [Lateral]
Scatopsiara atomaria
BIN URI: BOLD: AAH3920



BIOUG00895-A11 [Lateral]
Phytophaga
BIN URI: BOLD: ACL9275



BIOUG31083-D04 [Lateral]
Phytophaga
BIN URI: BOLD: ADE3581



UAM:Ento:97198 [Dorsal]
Anthocoris musculus
BIN URI: BOLD: AAF9945



BIOUG05599-E07 [Lateral]
Capitophorus elaeagni
BIN URI: BOLD: AAE3015



BIOUG00856-G02 [Lateral]
Lepyronia quadrangularis
BIN URI: BOLD: AAG8827



BIOUG13049-C08 [Dorsal]
Ceratagallia sanguinolenta
BIN URI: BOLD: ACF6995



BIOUG00936-B03 [Lateral]
Hemiptera
BIN URI: BOLD: ABA8103



BIOUG01107-C09 [Lateral]
Eratoneura
BIN URI: BOLD: ABZ0484



BIOUG03258-D09 [Lateral]
Empoasca
BIN URI: BOLD: AAN5445



BIOUG00901-D02 [Lateral]
Clastoptera obtusa
BIN URI: BOLD: AAG8823



CNC#HEM303618 [Dorsal]
Nabis americiferus
BIN URI: BOLD: AAB8143



BIOUG21116-C08 [Lateral]
Aphytis
BIN URI: BOLD: ABW3280



BIOUG08643-F05 [Lateral]
Praon
BIN URI: BOLD: ACE2830



BIOUG07537-A09 [Lateral]
Blacinae
BIN URI: BOLD: AAU8584



BIOUG08777-C09 [Lateral]
Diapriidae
BIN URI: BOLD: AAP6714



10BBCHY-2238 [Lateral]
Diapriidae
BIN URI: BOLD: AAU9153



BIOUG13730-F04 [Lateral]
Diapriidae
BIN URI: BOLD: ACL3171



BIOUG16023-A02 [Dorsal]
Tetrastichinae
BIN URI: BOLD: ACP8150



ASGLE-0338 [Lateral]
Charipinae
BIN URI: BOLD: AAU8573



BIOUG31082-F07 [Lateral]
Charipinae
BIN URI: BOLD: ACZ3953



BIOUG10153-F01 [Lateral]
Figitidae
BIN URI: BOLD: ACL2956



10BBUFO-0231 [Lateral]
Formica
BIN URI: BOLD: AAD8688



MAS145-08c [Lateral]
Formica
BIN URI: BOLD: AAE0406



BIOUG05507-D08 [Lateral]
Lasius neoiriger
BIN URI: BOLD: AAB9126



BIOUG03139-A03 [Lateral]
Lasius
BIN URI: BOLD:ACA9217



09GUANTS-098 [Lateral]
Myrmica AF-smi
BIN URI: BOLD:AAA1840



BIOUG00868-A01 [Lateral]
Diadegma
BIN URI: BOLD:AAB8765



BIOUG00859-B07 [Lateral]
Meloboris
BIN URI: BOLD:AAU8441



BIOUG00910-F11 [Lateral]
Ichneumonidae
BIN URI: BOLD:AAD4214



BIOUG00988-H07 [Lateral]
Ichneumonidae
BIN URI: BOLD:AAU8613



CNCHYM 014860 [Lateral]
Syrphoctonus signatus
BIN URI: BOLD:AAH2172



10BBCHY-0408 [Lateral]
Orthocentrinae
BIN URI: BOLD:AAG0976



ASGLE-0216 [Lateral]
Hymenoptera
BIN URI: BOLD:AAU8582



BIOUG08597-F06 [Lateral]
Dendrocerus
BIN URI: BOLD:ACJ6543



10BBHYM-0489 [Lateral]
Megaspilidae
BIN URI: BOLD:ABY3391



BIOUG03220-F11 [Lateral]
Anagrus
BIN URI: BOLD:AAZ1968



ASGLE-0326 [Lateral]
Synopeas
BIN URI: BOLD:AAU8571



BIOUG05001-F09 [Lateral]
Synopeas
BIN URI: BOLD:AAU9074



BIOUG25654-C04 [Lateral]
Telenomus
BIN URI: BOLD:AAG7892



BIOUG14476-A06 [Lateral]
Platygastridae
BIN URI: BOLD:AAU9340



BIOUG04550-F06 [Lateral]
Telenomus
BIN URI: BOLD:AAU9454



BIOUG01330-A06 [Lateral]
Platygastridae
BIN URI: BOLD:ABW3291



BIOUG17680-H02 [Lateral]
Platygastridae
BIN URI: BOLD:ACS1949



BIOUG01141-C09 [Lateral]
Dibrachys
BIN URI: BOLD:AAZ3284



BIOUG22027-E09 [Lateral]
Pteromalidae
BIN URI: BOLD:ADB4085



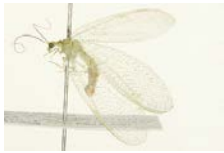
BIOUG13028-A06 [Dorsal]
Pteromalidae
BIN URI: BOLD:ACJ1468



BIOUG11254-H01 [Lateral]
Pteromalidae
BIN URI: BOLD:ACM1360



CSU-CPG-LEP001582 [Dorsal]
Erannia tiliaria
BIN URI: BOLD:AAC6725



NEUR 0019.02 [Lateral]
Meleoma signoretii
BIN URI: BOLD:AAG2022



BIOUG25615-G11 [Lateral]
Micromus angulatus
BIN URI: BOLD:ACZ4162



BIOUG01594-F11 [Lateral]
Lachesilla pedicularia
BIN URI: BOLD:AAF1729



BIOUG11805-B05 [Lateral]
Peripsocus madidus
BIN URI: BOLD:ACL9342