

Image Library - SEARCH: Process ids(128 ids)

Print

Parameters

Records Included: All records
 Filter Image by Orientation: None
 Aspect Ratio: Normalized 3:2

Result Summary

Total Records: 128

Re-render images: per row

5000 Records Per Page - Pages: 1



09ONTGAB-070 [Lateral]
Tetragnatha laboriosa
 BIN URI: BOLD:AAA6381



CCDB-23051-G02 [Dorsal]
Dicheirotrichus cognatus
 BIN URI: BOLD:AAV5222



BIOUG05520-C10 [Dorsal]
Phyllotreta striolata
 BIN URI: BOLD:AAL5267



10PCCOL-0120 [Dorsal]
Atomaria
 BIN URI: BOLD:AAP7043



CCDB-22984-D05 [Lateral]
Trachyploeus bifoveolatus
 BIN URI: BOLD:AAH0270



BIOUG00971-B09 [Dorsal]
Cyphon variabilis
 BIN URI: BOLD:ACX4619



BIOUG09884-D01 [Dorsal]
Lordithon thoracicus
 BIN URI: BOLD:ACL7992



BIOUG00971-E06 [Lateral]
Sepedophilus marshami
 BIN URI: BOLD:AA9241



CCDB-22987-A11 [Dorsal]
Tachyporus flavipennis
 BIN URI: BOLD:AAP7029



BIOUG04140-D12 [Lateral]
 Agromyzidae
 BIN URI: BOLD:AAU9505



BIOUG01402-E12 [Lateral]
 Anisopodidae
 BIN URI: BOLD:AAG1996



BIOUG06187-C08 [Lateral]
 Boitophiliidae
 BIN URI: BOLD:AAM9012



08BBDIP-1038 [Lateral]
Phormia regina
 BIN URI: BOLD:AAB9140



BIOUG25524-G07 [Lateral]
 Cecidomyiidae
 BIN URI: BOLD:AAP9022



10BBCDDIP-3341 [Lateral]
 Cecidomyiidae
 BIN URI: BOLD:AAV5761



BIOUG16098-A11 [Lateral]
 Cecidomyiidae
 BIN URI: BOLD:ACP9720



08TTML-2077 [Lateral]
 Paratendipes
 BIN URI: BOLD:ADE0124



10BBCDIP-0399 [Lateral]
 Pagastia
 BIN URI: BOLD:AAP6893



BIOUG20601-A05 [Lateral]
Limnophyes sp. 14ES
 BIN URI: BOLD:ABU5525



BIOUG03137-E01 [Lateral]
Smittia
 BIN URI: BOLD:ACB0946



BIOUG01623-D05 [Lateral]
Smittia sp. 8ES
 BIN URI: BOLD:ACP4736



BIOUG21770-A06 [Lateral]
Smittia sp. 14ES
 BIN URI: BOLD:ACW5117



10JSROW-1409 [Lateral]
 Orthocladiinae
 BIN URI: BOLD:AA5342



BIOUG04208-A11 [Lateral]
 Tanypodinae
 BIN URI: BOLD:ACC5968



BIOUG25583-B05 [Lateral]
 Chironomidae
 BIN URI: BOLD:ACX8236



BIOUG01426-C08 [Lateral]
 Elachiptera
 BIN URI: BOLD:AAH4208



09BBDIP-1582 [Lateral]
Culex tarsalis
 BIN URI: BOLD:ABY6040



BIOUG01818-A04 [Lateral]
Culiseta inornata
 BIN URI: BOLD:AAC9132



BIOUG06388-G04 [Lateral]
Drosophila
 BIN URI: BOLD:AAG8495



10BBCDIP-1496 [Lateral]
Drosophila recens
 BIN URI: BOLD:ACF0720



08TTML-1852 [Lateral]



08BBDIP-0637 [Lateral]



10BBCDIP-0118 [Lateral]



08TTML-0842 [Lateral]



BIOUG01459-C06 [Lateral]



BIOUG01392-A03 [Lateral]

Scaptomyza flava
BIN URI: BOLD: AAN5544



10BBDIP-0993 [Lateral]
Lonchoptera bifurcata
BIN URI: BOLD: AAG9974

Scaptomyza pallida
BIN URI: BOLD: AAG8493



10BBCDIP-2971 [Lateral]
Helina annosa
BIN URI: BOLD: AAK4683

Suilla convergens
BIN URI: BOLD: ACX4624



BIOUG01337-B11 [Lateral]
Cordyla
BIN URI: BOLD: ABU5545

Hybotidae
BIN URI: BOLD: AAN5501



BIOUG04553-F02 [Lateral]
Exechia
BIN URI: BOLD: ACD9501

Lauxaniidae
BIN URI: BOLD: AAP6482



BIOUG01402-G02 [Lateral]
Mycetophilidae
BIN URI: BOLD: AAG4931

Symplecta cana
BIN URI: BOLD: AAF9014



BIOUG04080-B06 [Lateral]
Mycetophila gernerensis
BIN URI: BOLD: ACD1714



BIOUG05324-C03 [Lateral]
Mycetophila
BIN URI: BOLD: AAG4872



08TTML-2100 [Lateral]
Mycetophila strigatoides
BIN URI: BOLD: AAG4922



BIOUG03731-E10 [Lateral]
Mycetophilidae
BIN URI: BOLD: AAP9072



MTDIC-0025 [Lateral]
Megaselia
BIN URI: BOLD: AAG3234



BIOUG01920-C07 [Lateral]
Megaselia
BIN URI: BOLD: AAG3303



BIOUG04444-F02 [Lateral]
Megaselia
BIN URI: BOLD: ABV3315



BIOUG10518-D10 [Lateral]
Megaselia
BIN URI: BOLD: ACD0632



BIOUG01666-A06 [Lateral]
Phoridae
BIN URI: BOLD: ACF3749



BIOUG12503-D11 [Lateral]
Megaselia
BIN URI: BOLD: ACN5785

[skewed]



10PHMAL-0997 [Lateral]
Megaselia diversa
BIN URI: BOLD: ACR4654



BIOUG01459-D09 [Lateral]
Conicera
BIN URI: BOLD: AAG3236



BIOUG05505-G01 [Lateral]
Psychoda cinerea
BIN URI: BOLD: ACF6513



BIOUG04254-B06 [Lateral]
Psychoda phalaenoides
BIN URI: BOLD: AAF9317



BIOUG08898-E03 [Lateral]
Scathophaga furcata
BIN URI: BOLD: ACX4405



BIOUG02936-E01 [Lateral]
Bradysia impatiens
BIN URI: BOLD: AAV1295



BIOUG02308-D01 [Lateral]
Bradysia
BIN URI: BOLD: ABX3194



BIOUG02981-F02 [Lateral]
Corynoptera cursor
BIN URI: BOLD: AAP6465



BIOUG14353-E05 [Lateral]
Corynoptera perpusilla
BIN URI: BOLD: AAN6447



BIOUG21964-D10 [Lateral]
Corynoptera
BIN URI: BOLD: AAP8773



BIOUG06877-G02 [Lateral]
Lycoriella flavipeda
BIN URI: BOLD: AAL7869



BIOUG11561-A06 [Lateral]
Pseudolycoriella brunnea
BIN URI: BOLD: ACX5278



BIOUG07887-E12 [Lateral]
Scatopsiara atomaria
BIN URI: BOLD: AAH3920



BIOUG02650-G08 [Lateral]
Scatopsiara atomaria
BIN URI: BOLD: AAN6431



BIOUG04060-F02 [Lateral]
Sciaridae
BIN URI: BOLD: ACB0536



BIOUG01349-F06 [Lateral]
Sepsis
BIN URI: BOLD: AAC2855



BIOUG01360-C08 [Lateral]
Spelobia
BIN URI: BOLD: AAG7308



BIOUG16073-F09 [Lateral]
Graphogaster
BIN URI: BOLD: ACP7602



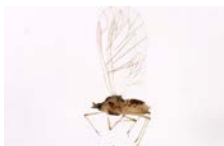
BIOUG07277-A08 [Dorsal]
Aleyrodes
BIN URI: BOLD: ABW2915



BIOUG06864-D09 [Dorsal]
Anthocoris antevolens
BIN URI: BOLD: ACU7840



BIOUG03541-G02 [Lateral]
Hyperomyzus lactucae
BIN URI: BOLD: AAB8566



BIOUG00806-C09 [Lateral]
Rhopalomyzus lonicerarum
BIN URI: BOLD: AAC4637



BIOUG07986-E06 [Dorsal]
Betulaphis pelei
BIN URI: BOLD: AA14153



BIOUG08657-B12 [Lateral]
Callipterinella
BIN URI: BOLD: ACB2802



BIOUG04220-G12 [Dorsal]
Euceraphis betulae
BIN URI: BOLD: AA14926



BIOUG00937-B09 [Lateral]
Macrosteles quadrilineatus
BIN URI: BOLD: AAA9422



CNC#HEM305487 [Lateral]
Empoasca luda
BIN URI: BOLD: ACN9975



BIOUG22017-B03 [Dorsal]



CNC#HEM032700-8 [Dorsal]



CNC#HEM301007 [Dorsal]



BIOUG23801-G08 [Dorsal]



CNC#HEM303618 [Dorsal]



BIOUG21116-C08 [Lateral]

Erythroneura
BIN URI: BOLD:ACU4916



BIOUG25573-A06 [Lateral]
Praon gallicum
BIN URI: BOLD:AAF0448

Lygus lineolaris
BIN URI: BOLD:AAA5803



07PROBE-21110 [Lateral]
Praon
BIN URI: BOLD:AAH7436

Lygus punctatus
BIN URI: BOLD:ABZ1405



BIOUG08086-C04 [Lateral]
Aphidinae
BIN URI: BOLD:AA5124

Psallioivus piceicola
BIN URI: BOLD:AAC4309



10BBHYM-1368 [Lateral]
Blacinae
BIN URI: BOLD:AAL8250

Nabis Americoferus
BIN URI: BOLD:AAB8143



BIOUG31118-H11 [Lateral]
Braconidae
BIN URI: BOLD:ADE1843

Aphytis
BIN URI: BOLD:ABW3280



ASGLE2-0234 [Lateral]
Hymenoptera
BIN URI: BOLD:AAU8736



BIOUG17431-F03 [Lateral]
Belytiinae
BIN URI: BOLD:AAU9829



10BBCHY-2266 [Lateral]
Diapriidae
BIN URI: BOLD:ABX5571



10BBCHY-3010 [Lateral]
Encyrtidae
BIN URI: BOLD:AAU8973



BIOUG16984-E11 [Lateral]
Alloxyta
BIN URI: BOLD:ACR5088



BIOUG11768-C05 [Lateral]
Charipinae
BIN URI: BOLD:ACM0946



BIOUG31119-B12 [Lateral]
Charipinae
BIN URI: BOLD:ADE3913



BIOUG12155-B09 [Lateral]
Formica
BIN URI: BOLD:AAA4977



09GUANTS-213 [Lateral]
Lasius
BIN URI: BOLD:AAI1292



06-PROBE-3742 [Lateral]
Diadegma sp. MAS
BIN URI: BOLD:AAL1411



BIOUG00761-C02 [Lateral]
Atractodes
BIN URI: BOLD:AAD7163



BIOUG03166-A03 [Lateral]
Cryptinae
BIN URI: BOLD:AAU9328



BIOUG03119-E02 [Lateral]
Syrphoctonus vitreus
BIN URI: BOLD:ACG6542



BIOUG16081-H07 [Lateral]
Diplazontinae
BIN URI: BOLD:ACP8913



BIOUG03336-F06 [Lateral]
Megastylus
BIN URI: BOLD:ACE4233



10PHMAL-3230 [Lateral]
Orthocentrus
BIN URI: BOLD:AAU8218



BIOUG07192-F05 [Lateral]
Plectiscidea
BIN URI: BOLD:AAF4291



BIOUG31140-C02 [Lateral]
Plectiscidea
BIN URI: BOLD:ADE3950



BIOUG00869-A04 [Lateral]
Stenomacrus
BIN URI: BOLD:AAZ0181



BIOUG03129-G06 [Lateral]
Stenomacrus
BIN URI: BOLD:ACE4848



BIOUG04095-B06 [Lateral]
Stenomacrus
BIN URI: BOLD:ACG3877



10BBCHY-0093 [Lateral]
Orthocentrinae
BIN URI: BOLD:AAU9483



BIOUG03559-F03 [Lateral]
Orthocentrinae
BIN URI: BOLD:ABW3288



10BBCHY-0923 [Lateral]
Scambus
BIN URI: BOLD:ACE6645



BIOUG04237-B02 [Lateral]
Netelia
BIN URI: BOLD:AAI3088



ASGLE-0167 [Lateral]
Hymenoptera
BIN URI: BOLD:AAU8599



BIOUG07143-E01 [Lateral]
Megaspilidae
BIN URI: BOLD:ACG4735



BIOUG22453-A04 [Lateral]
Megaspilidae
BIN URI: BOLD:ACJ1417



10BBCHY-2336 [Lateral]
Gonatocerus
BIN URI: BOLD:AA9181



BIOUG16049-G11 [Dorsal]
Myrmaridae
BIN URI: BOLD:ACP9287



BIOUG01757-B12 [Lateral]
Platygastriidae
BIN URI: BOLD:ABV2720



10BBCHY-2050 [Lateral]
Platygastriidae
BIN URI: BOLD:AAG7990



10BBHYM-0315 [Lateral]
Pteromalidae
BIN URI: BOLD:AA7709



BIOUG08494-G11 [Lateral]
Pteromalidae
BIN URI: BOLD:ACF7448



BIOUG07197-D03 [Lateral]
Pteromalidae
BIN URI: BOLD:ACI2812



BIOUG21993-E07 [Lateral]
Pteromalidae
BIN URI: BOLD:ACU4069



09BBHYM-075 [Lateral]
Vesputa pensylvanica
BIN URI: BOLD:AAG8042



BIOUG12229-E11 [Dorsal]
Epinotia pulsatillana
BIN URI: BOLD:AAF4278



10BBNEU-0012 [Lateral]
Chrysoperla
BIN URI: BOLD:AAB0373

Copyright © 2014 BOLD Systems. All rights reserved.